

Identifying Stabilin-1 and Stabilin-2 Double Knockouts in Reproduction and Placentation: A Descriptive Study

Soon-Young Kim ^{1,2}, Eun-Hye Lee ¹, Eun Na Kim ³, Woo-Chan Son ³, Yeo Hyang Kim ^{4,5}, Seung-Yoon Park ⁶, In-San Kim ^{7,8} and Jung-Eun Kim ^{1,2,*}

* Correspondence: kjeun@knu.ac.kr

Supplementary Materials

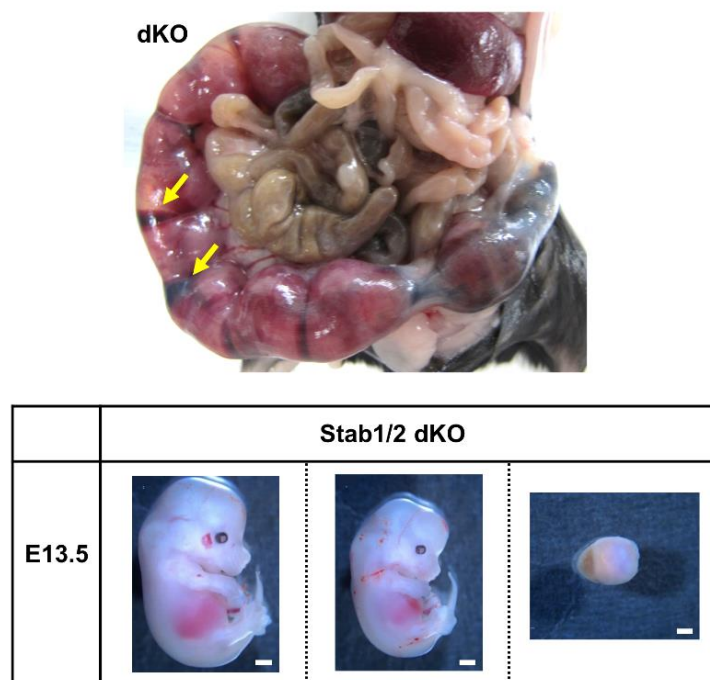


Figure S1. Uterine horns with E13.5 embryos in pregnant Stab1/2 dKO mice. Yellow arrows in Stab1/2 dKO indicate blood within uterine horns. High-magnification images of unevenly sized embryos or undefined tissue at E 13.5. Scale bar, 1 mm

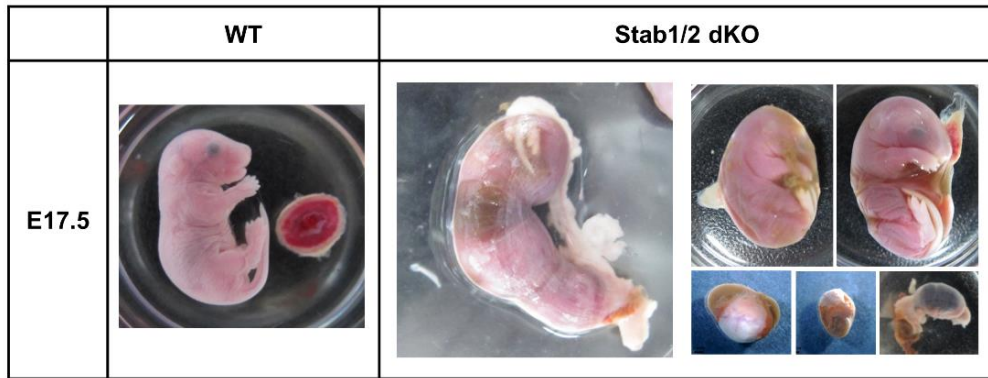


Figure S2. Images of unevenly sized embryos or undefined tissue in pregnant Stab1/2 dKO mice compared to normal-sized embryo and placenta of pregnant WT mice at E17.5.

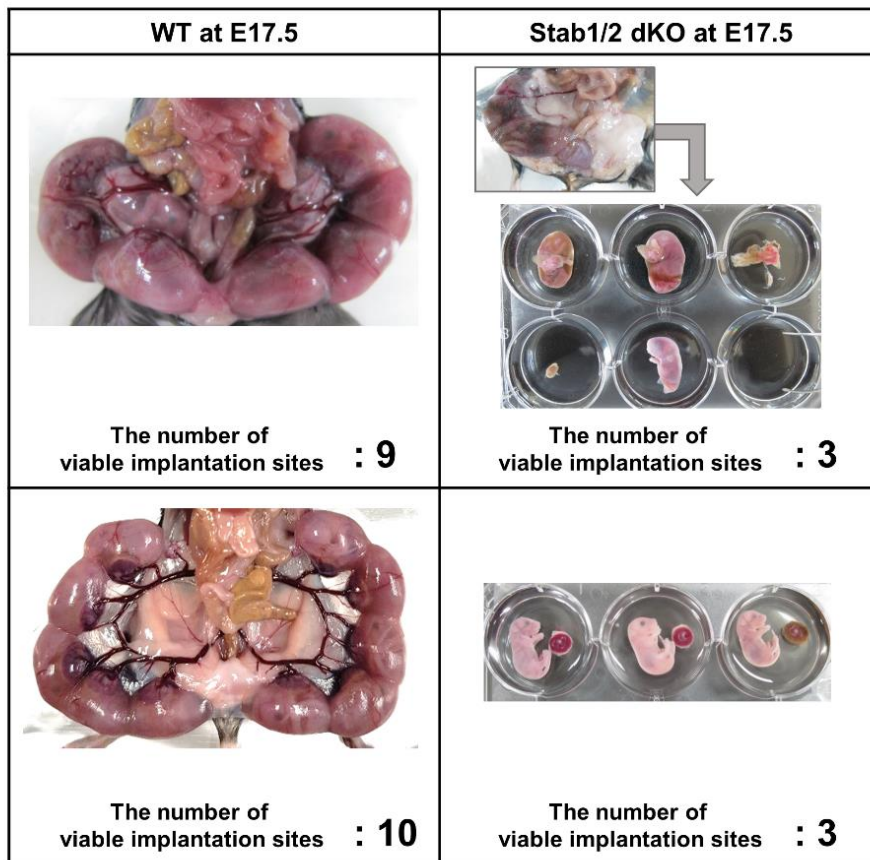
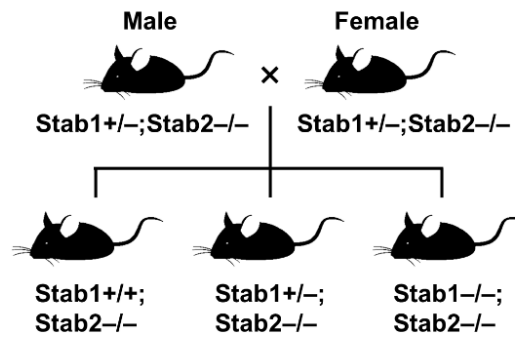


Figure S3. Images of the uteri or E17.5 embryos in WT and Stab1/2 dKO females and the number of viable implantation sites



| Genotype of Pups | Number |
|--------------------|--------|
| Stab1+/-; Stab2-/- | 11 |
| Stab1+/-; Stab2-/- | 47 |
| Stab1-/-; Stab2-/- | 3 |

Figure S4. Pedigree and the number of pups generated by crossing between male and female mice with Stab1 heterozygous and Stab2 knockout genotypes. WT, +/+; heterozygous, +/-; knockout, -/-