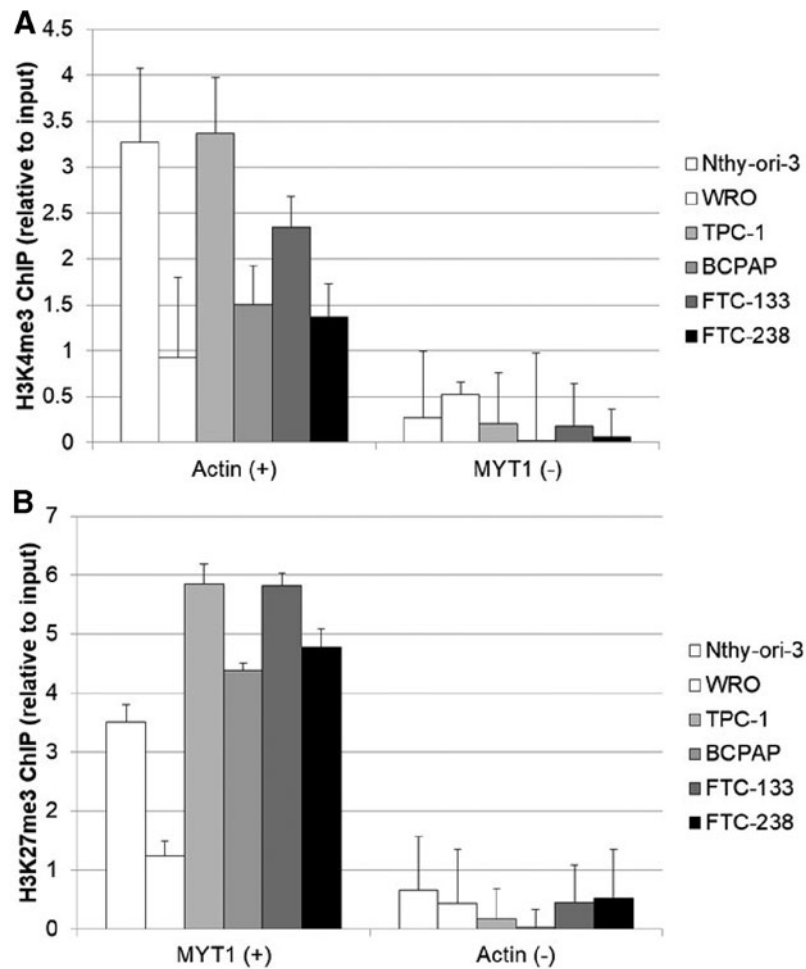


Supplementary Data



SUPPLEMENTARY FIG. S1. H3K4me3 and H3K27me3 ChIP-qPCR at control loci. Binding was measured relative to 5% input chromatin in the indicated cell lines by ChIP-qPCR for (A) H3K4me3. The *Actin* locus was used as a positive control, and *MYT1* as a negative control for H3K4me3 binding. (B) H3K27me3. The *MYT1* locus was used as a positive control, and *Actin* as a negative control. Both chromatin marks showed robust binding as expected in the positive controls and low binding in the negative controls. All error bars represent standard error within triplicates. ChIP, chromatin immunoprecipitation; qPCR, quantitative polymerase chain reaction.