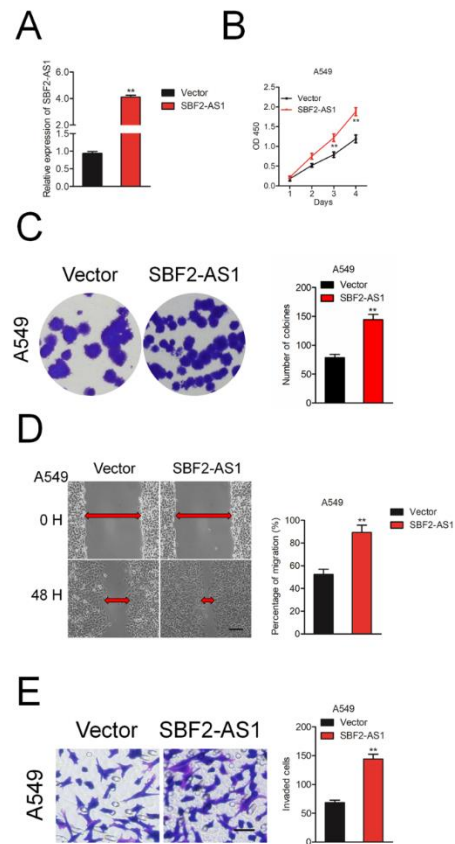
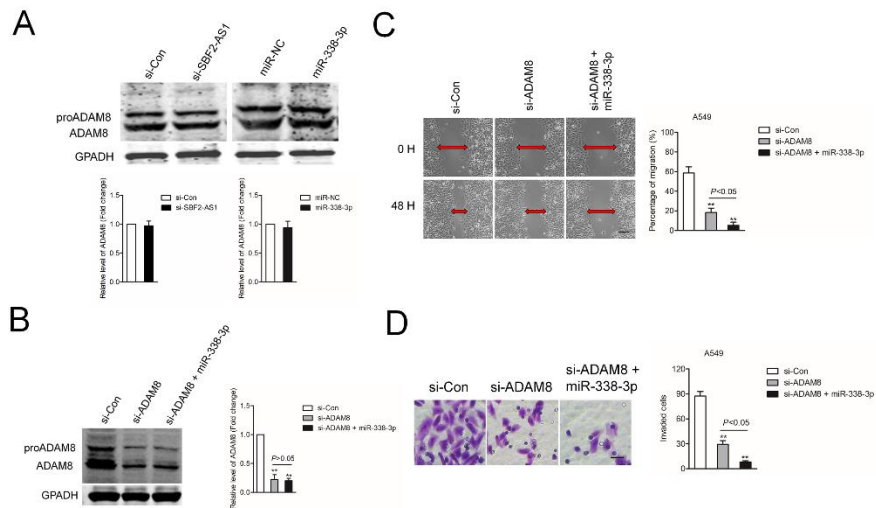


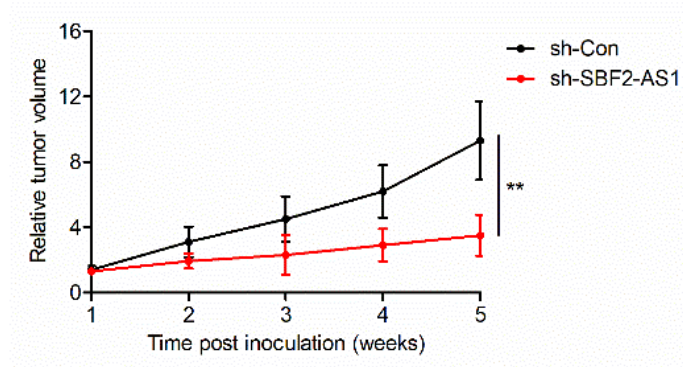
SUPPLEMENTARY FIGURES



Supplementary Figure 1. SBF2-AS1 promotes NSCLC cell proliferation and invasion. (A) A549 cells were transfected with vector or SBF2-AS1. The expression levels of SBF2-AS1 in different groups were analyzed by qRT-PCR. (B) Cell proliferation activity of A549 cells was assessed by CCK-8 assay. (C) Cell proliferation activity of A549 cells was assessed by cell colony formation assay. (D) Cell migration ability of A549 cells in different groups was analyzed by wound healing assay. (E) Cell invasion ability of A549 cells in different groups was analyzed by Transwell invasion assay. ** $P < 0.01$ compared with vector.



Supplementary Figure 2. miR-338-3p inhibits the migration and invasion of si-ADAM8 transfected A549 cell. (A) A549 cells were transfected with si-SBF2-AS1 or miR-338-3p. The expression levels of ADAM8 in different groups were analyzed by western blotting. (B) A549 cells were transfected with si-ADAM alone or cotransfected with si-ADAM8 plus miR-228-3p. The expression levels of ADAM8 in different groups were analyzed by western blotting. (C) Cell migration of A549 cells was assessed by wound healing assay. (D) Cell invasion ability of A549 cells in different groups was analyzed by Transwell invasion assay. ** $P < 0.01$ compared with si-Con.



Supplementary Figure 3. Relative tumor volumes (RTVs) were measured in the different groups. ** $P < 0.01$ compared with sh-Con.