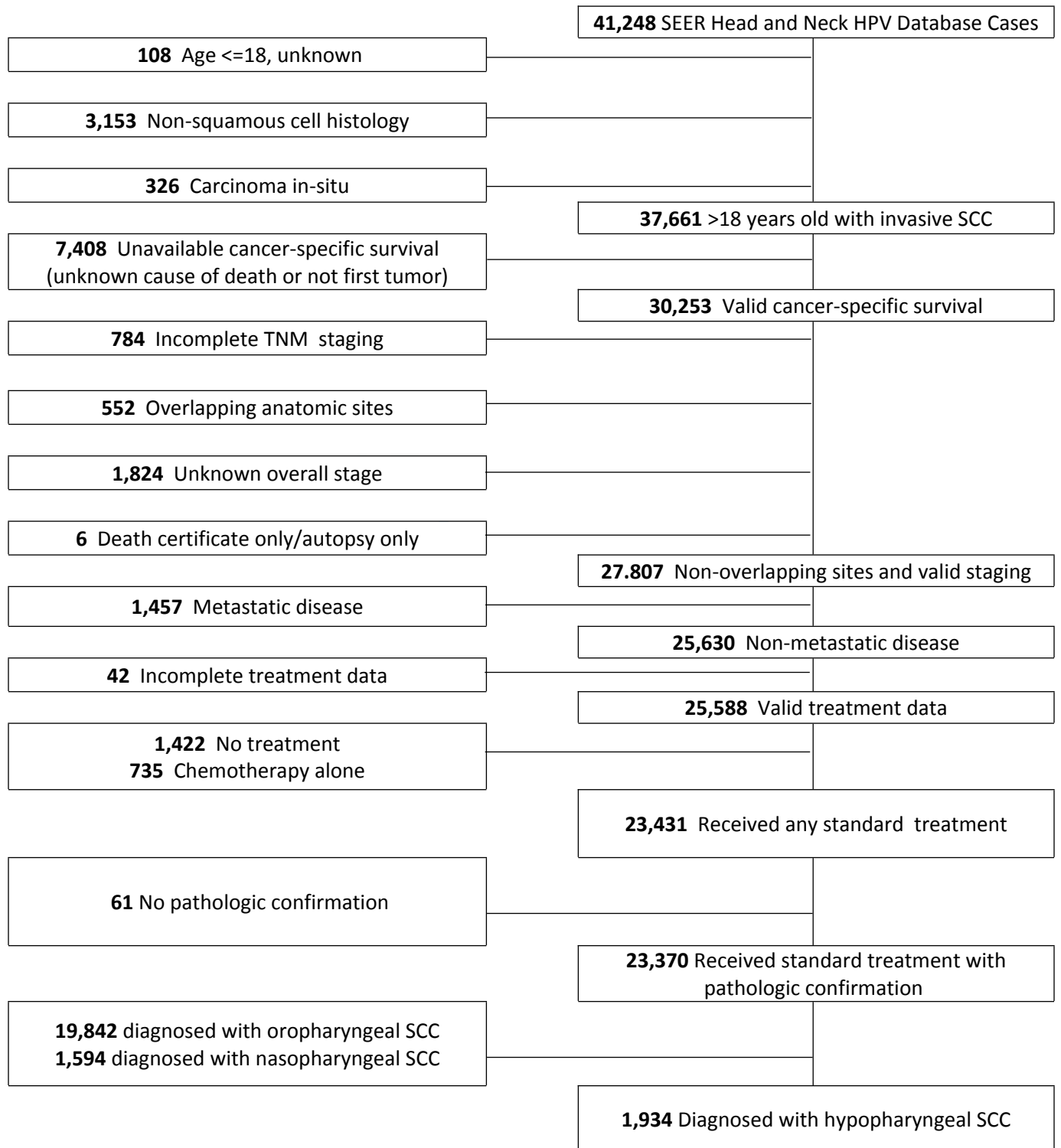


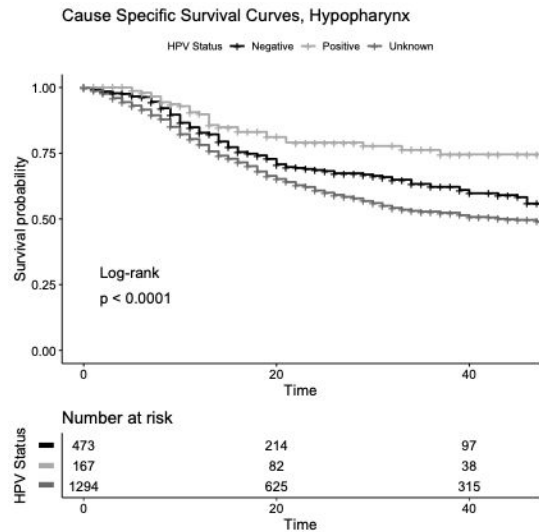
eFigure1. Patient selection diagram



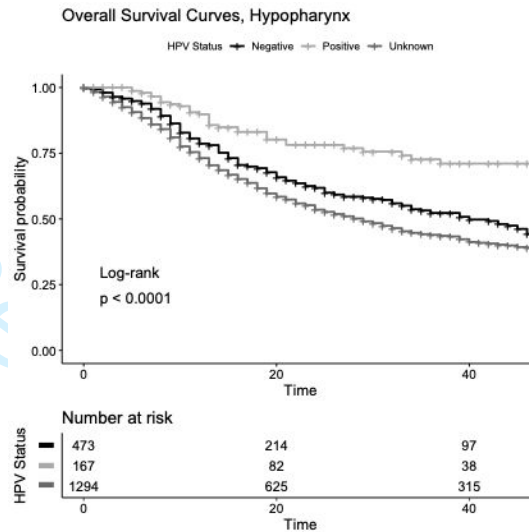
eFigure 2. Cancer-specific and overall survival of SEER non-metastatic hypopharyngeal SCC patients

a: Cancer-specific survival; b: Overall survival

a.



b.



Abbreviations: HPV, human papillomavirus; SCC, squamous cell carcinoma.

P value for Log Rank (Mantel Cox) test.  $\alpha = .05$ , CI 95% for all tests. HPV status determined by any testing done on surgical specimens (HPV in-situ hybridization [ISH], tissue PCR, ISH for E6/7 RNA, real time-PCR for E6/7 RNA) and excluded blood or serology testing.