

Figure S1

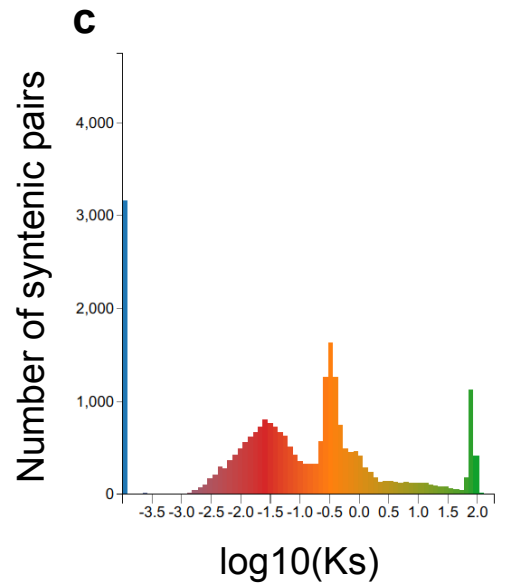
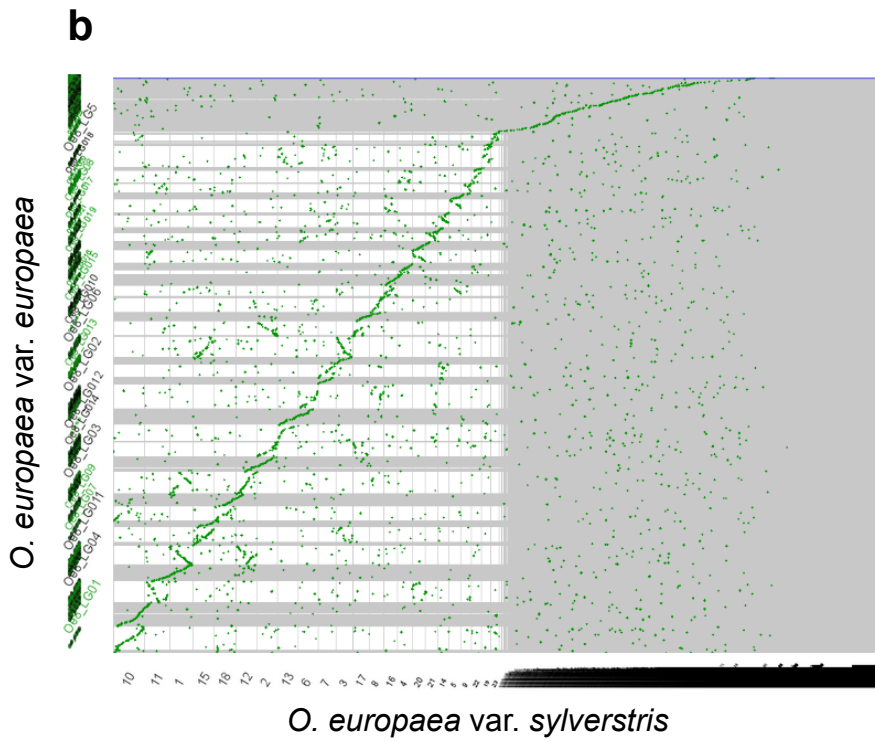
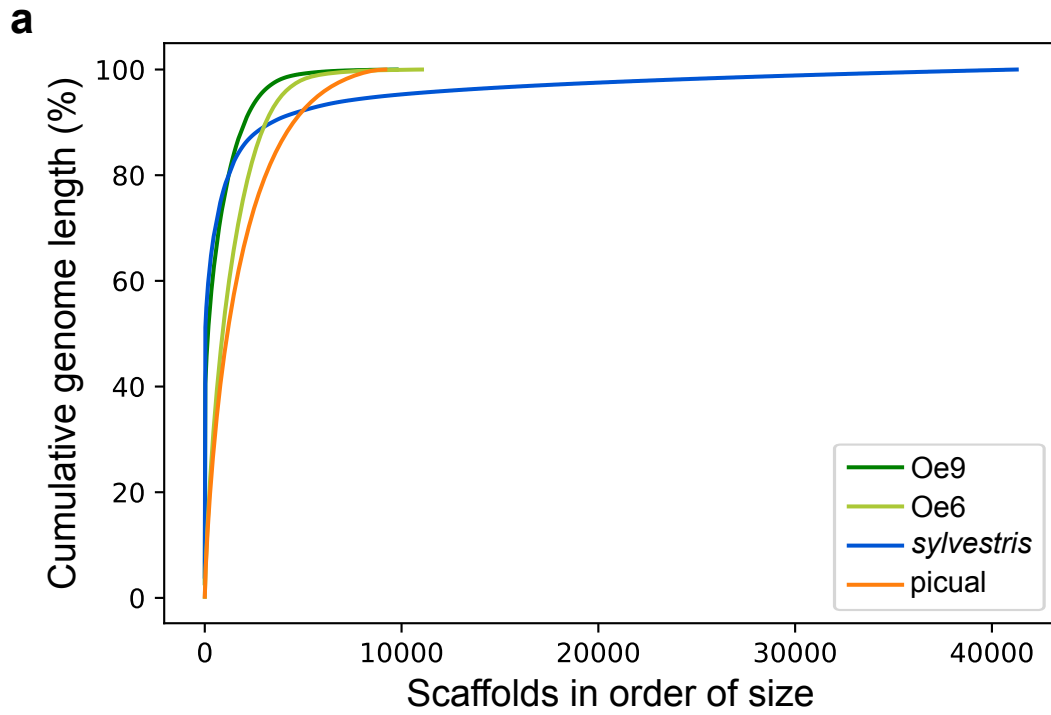


Figure S2

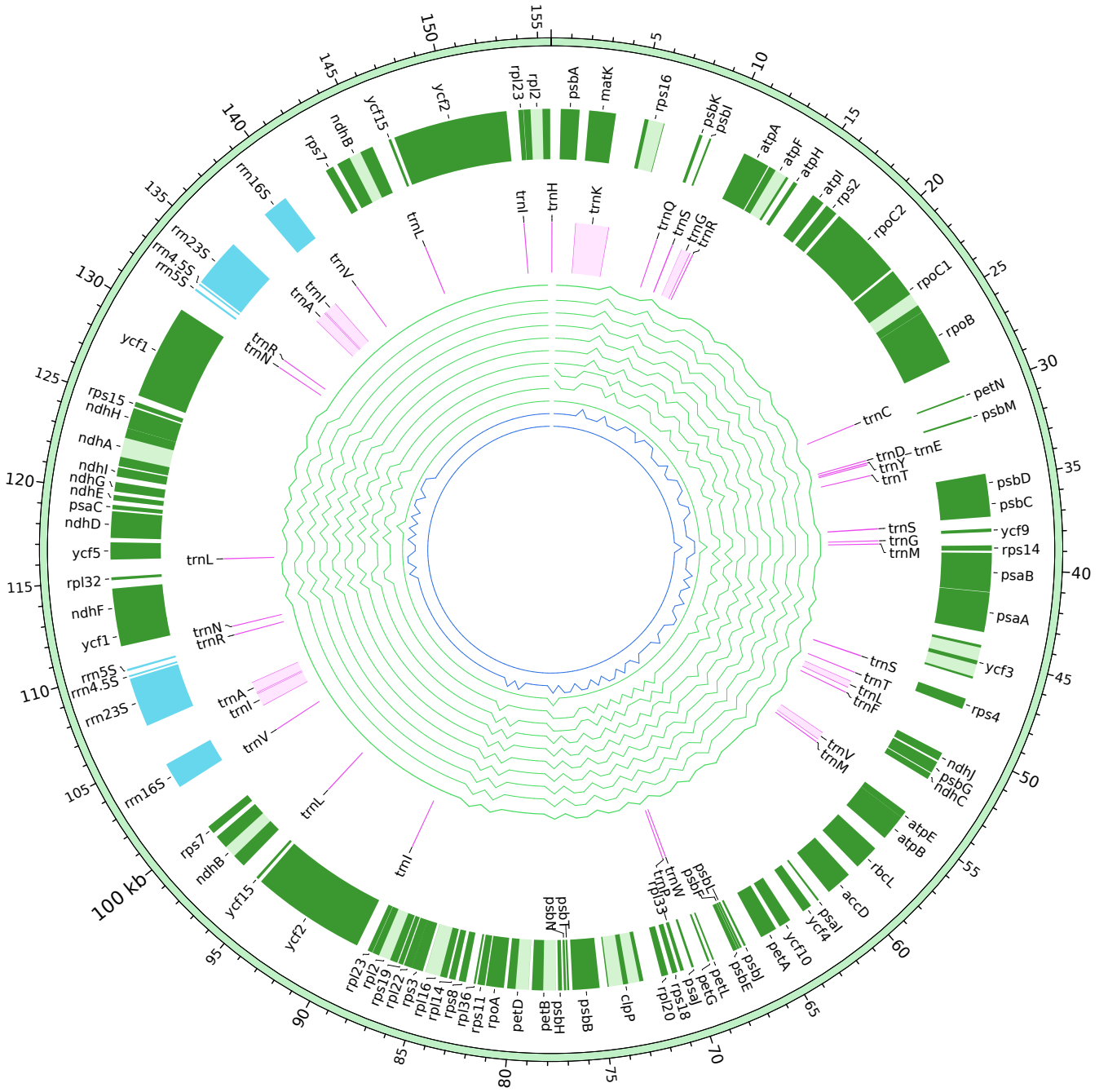
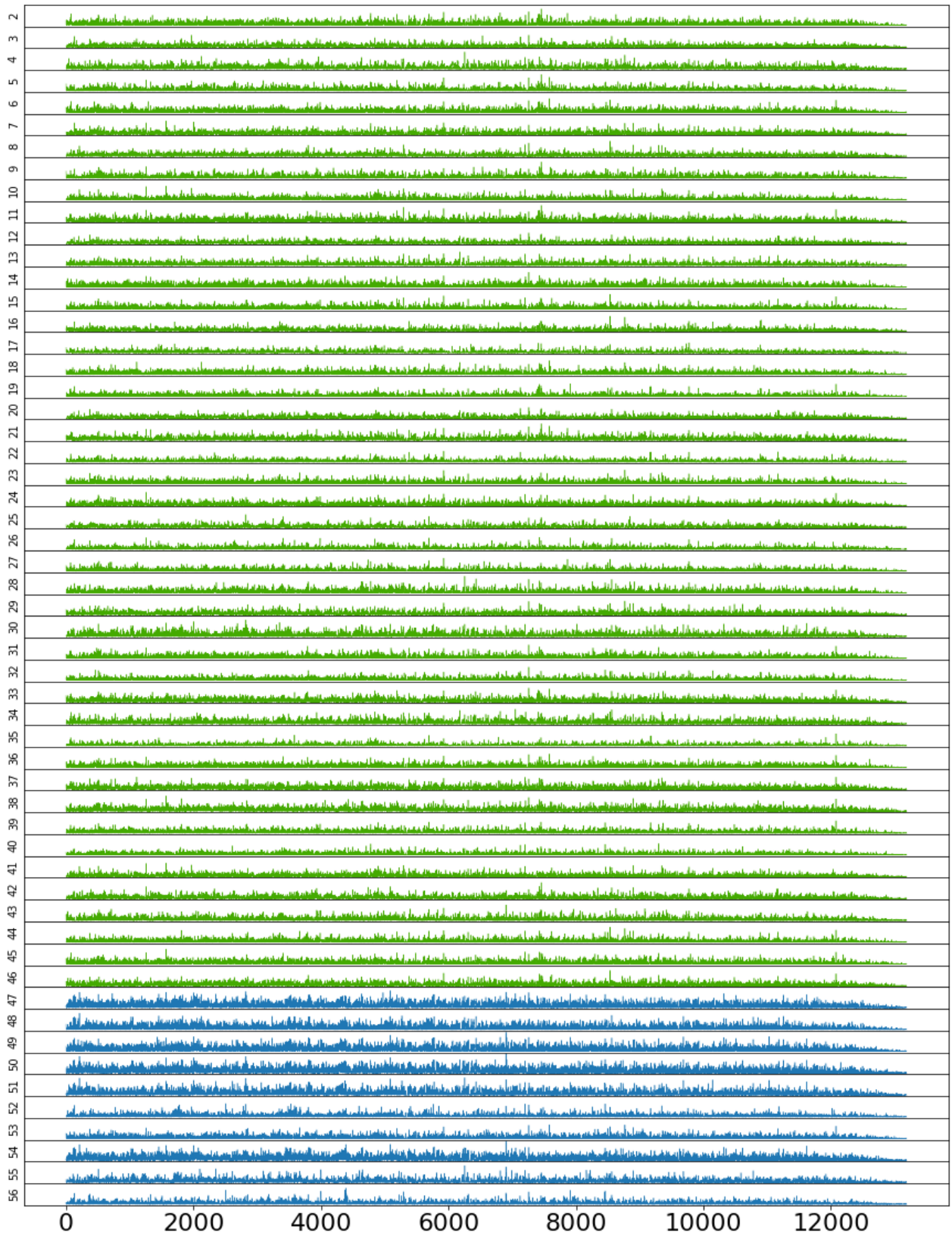




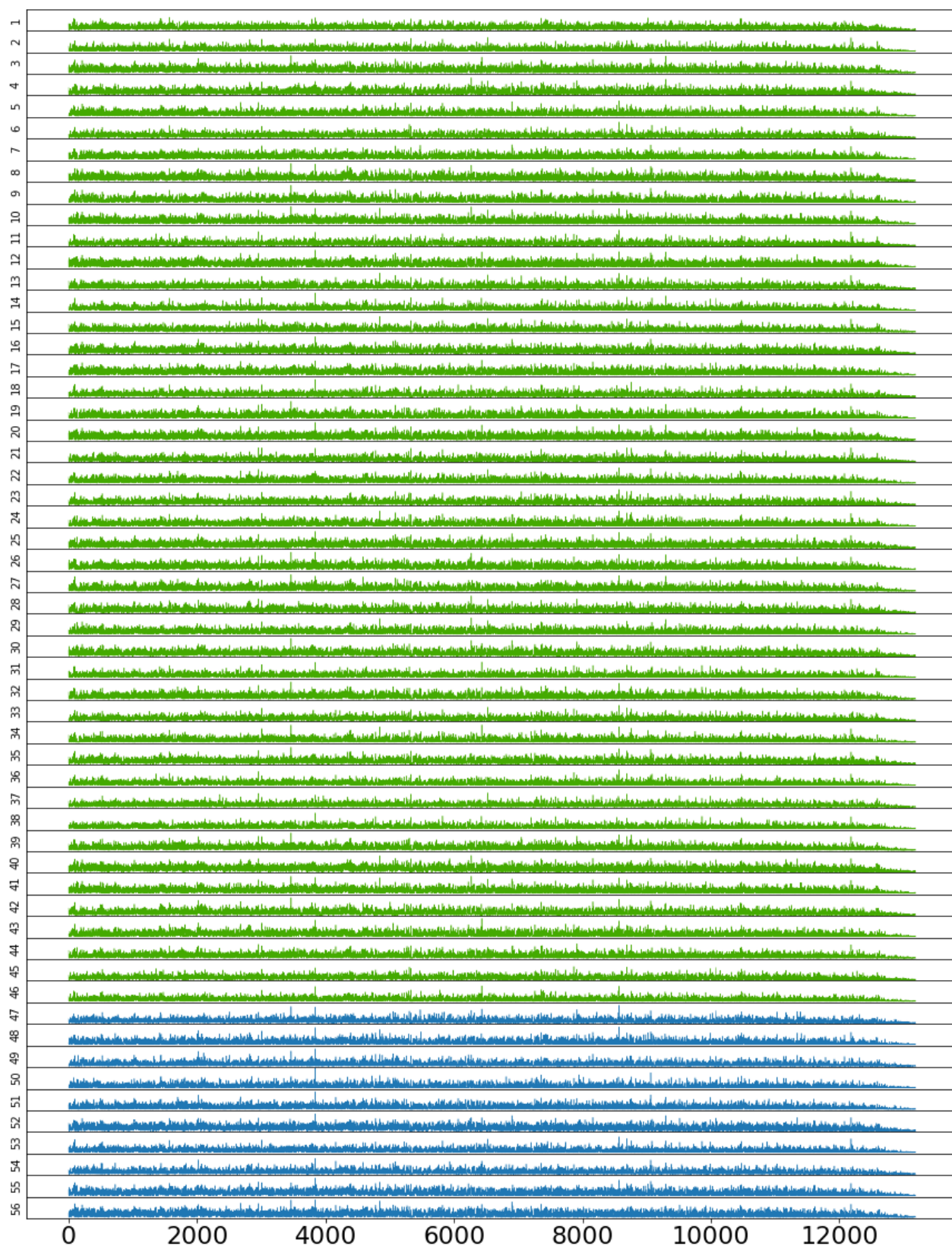
Figure S4



2 'Maarri'	13 'Ocal'	25 'Piñonera'	37 'Majhol-152'	47 W7R224
3 'Koroneiki'	14 'Fishomi'	26 'Frantoio'	38 'Mari'	48 W9R302
4 'Grappolo'	15 'Manzanilla de Sevilla'	27 'Arbequina'	39 'Picual'	49 W11R37
5 'Morrut'	16 'Mavreya'	28 'Leccino'	40 'Chemlal de Kabilye'	50 sylvestris-P
6 'Abou Satl Mohazam'	17 'Menya'	29 'Kalamon'	41 'Zarza'	51 W2R74
7 'Barnea'	18 'Uslu'	30 'Dokkar'	42 'Mastoidis'	52 W8R225
8 'Temprano'	19 'Lechin de Granada'	31 'Majhol-1013'	43 'Klon-14-1812'	53 sylvestris-T
9 'Myrtolia'	20 'Megaritiki'	32 'Manzanillera de Huerca Overa'	44 'Picudo'	54 W3R78
10 'Lechin de Sevilla'	21 'Beladi'	33 'Jabali'	45 'Abbadi Abou Gabra-842'	55 W1R198
11 'Sorani'	22 'Forastera de Tortosa'	34 'Verdial de Velez-Malaga-1'	46 'Barri'	56 W4R183
12 'Lianolia Kerkyras'	23 'Royal'	35 'Llumeta'		
	24 'Hojiblanca'	36 'Abou Kanani'		



Figure S5



1 'Farga'	13 'Ocal'	25 'Piñonera'	37 'Majhol-152'	47 W7R224
2 'Maarri'	14 'Fishomi'	26 'Frantoio'	38 'Mari'	48 W9R302
3 'Koroneiki'	15 'Manzanilla de Sevilla'	27 'Arbequina'	39 'Picual'	49 W11R37
4 'Grappolo'	16 'Mavreya'	28 'Leccino'	40 'Chemlal de Kabilye'	50 sylvestris-P
5 'Morrut'	17 'Menya'	29 'Kalamon'	41 'Zarza'	51 W2R74
6 'Abou Satl Mohazam'	18 'Uslu'	30 'Dokkar'	42 'Mastoidis'	52 W8R225
7 'Barnea'	19 'Lechin de Granada'	31 'Majhol-1013'	43 'Klon-14-1812'	53 sylvestris-T
8 'Temprano'	20 'Megaritiki'	32 'Manzanillera de Huerca Overa'	44 'Picudo'	54 W3R78
9 'Myrtolia'	21 'Beladi'	33 'Jabali'	45 'Abbad Abou Gabra-842'	55 W1R198
10 'Lechin de Sevilla'	22 'Forastera de Tortosa'	34 'Verdial de Velez-Malaga-1'	46 'Barri'	56 W4R183
11 'Sorani'	23 'Royal'	35 'Llumeta'		
12 'Lianolia Kerkyras'	24 'Hojiblanca'	36 'Abou Kanani'		



Figure S7

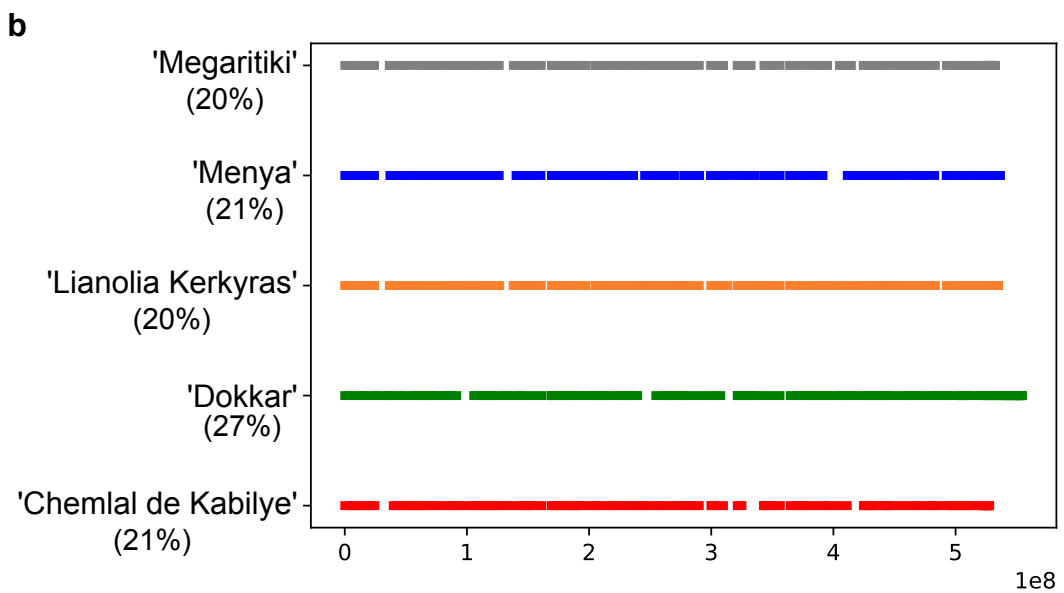
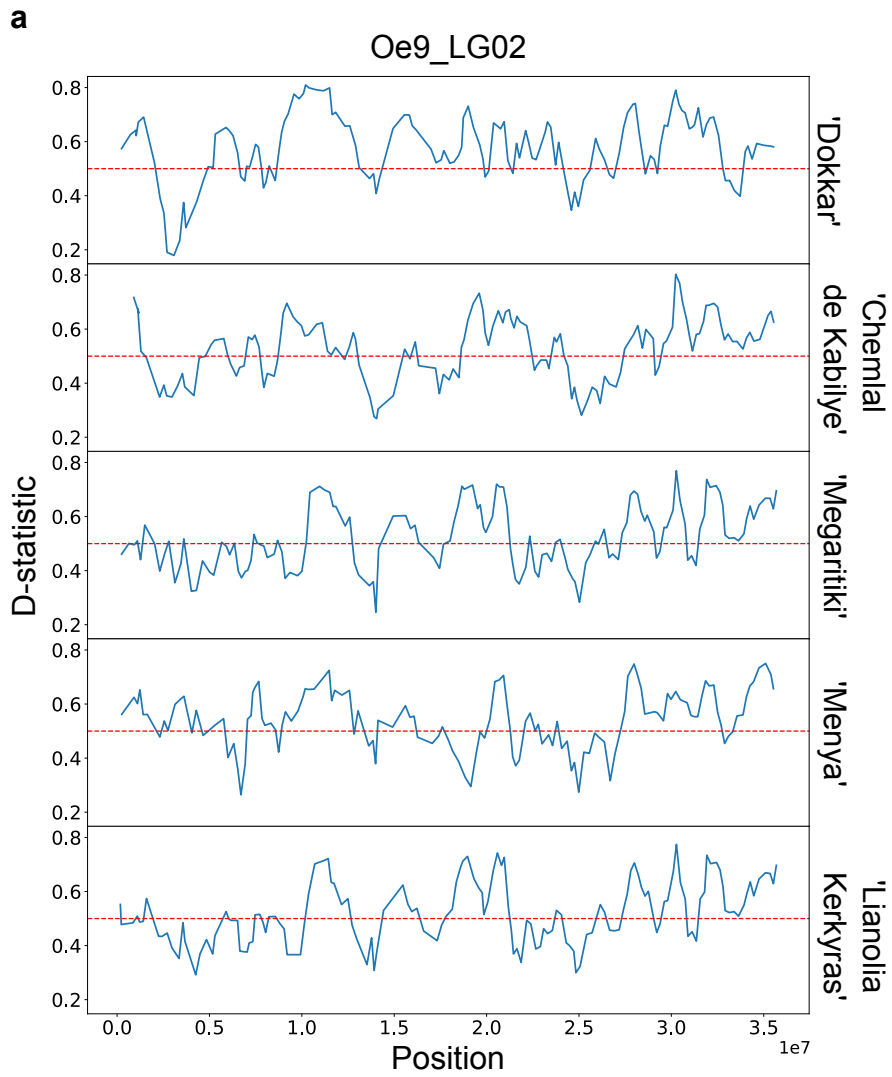


Figure S8

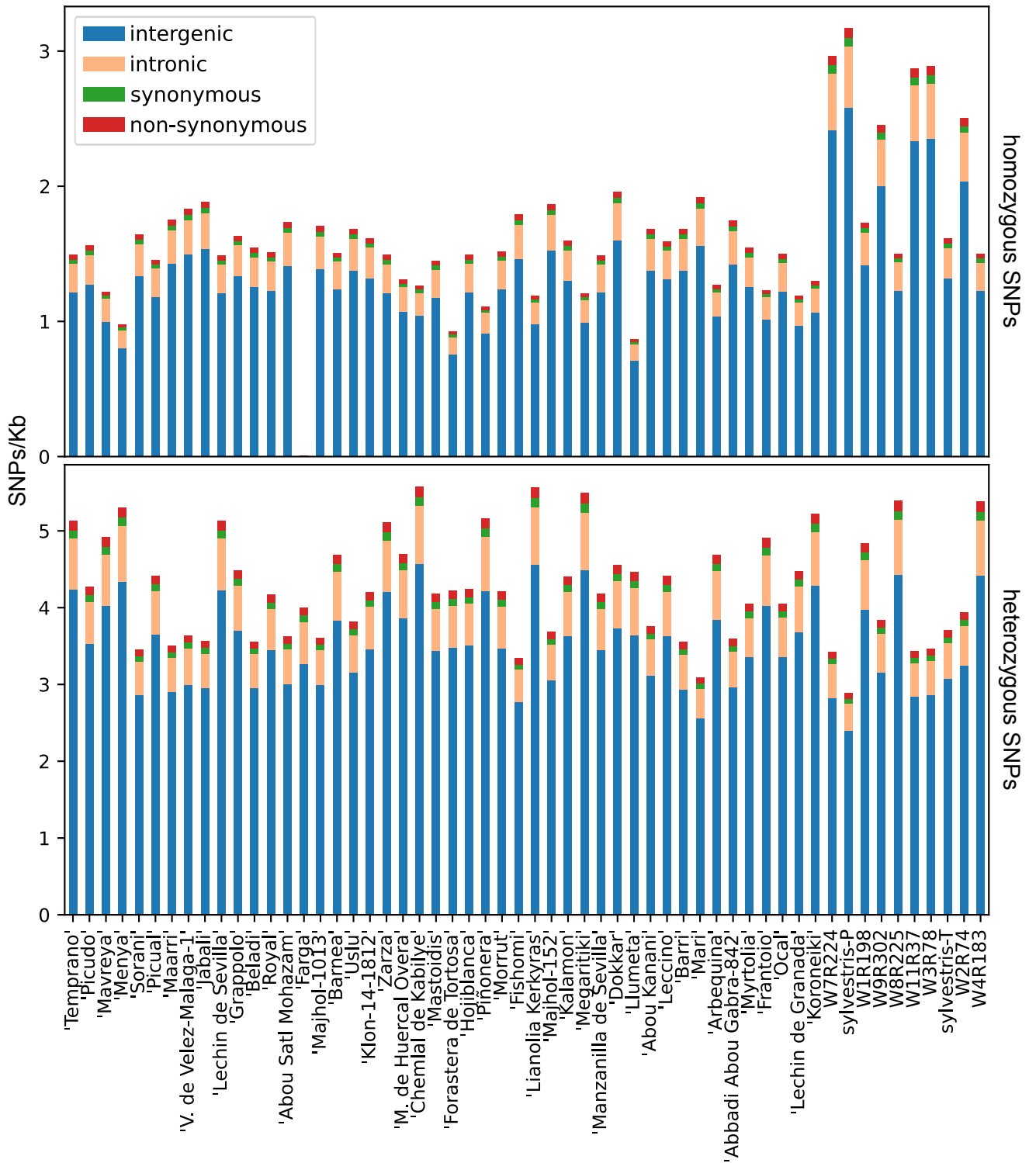




Figure S9

