

# QTOF-MS spectrum of reference standards- caffeic acid, rosmarinic acid, luteolin-7-O-glucoside, carnosol, carnosic acid and ursolic acid

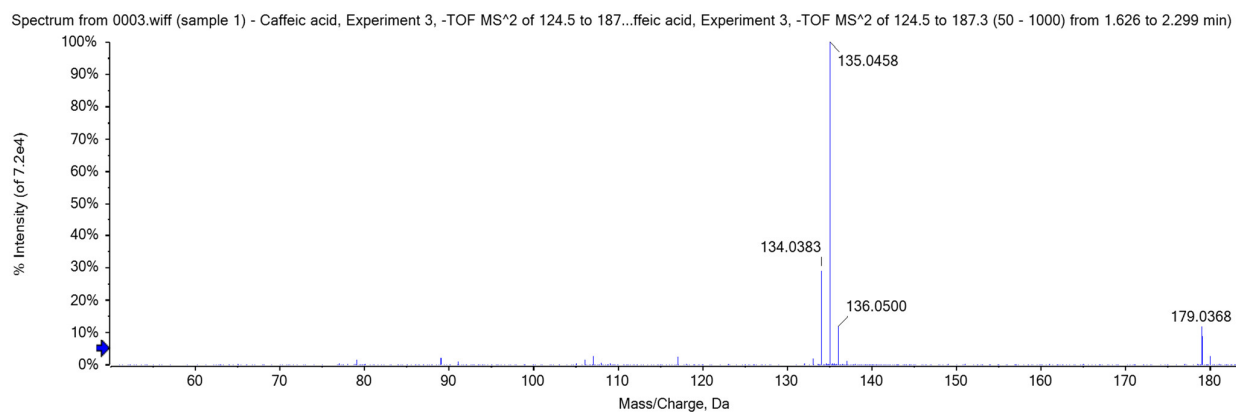


Figure S1. QTOF-MS spectrum of caffeic acid.

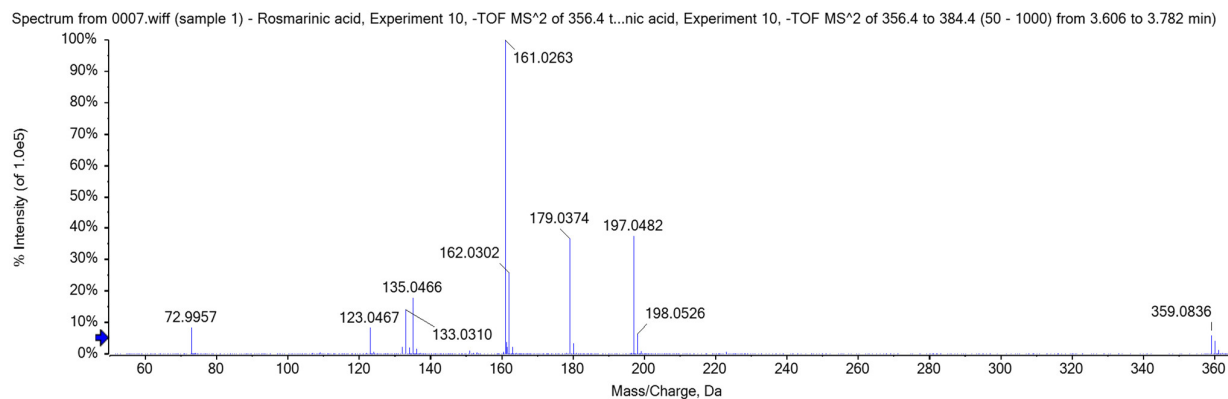


Figure S2. QTOF-MS spectrum of rosmarinic acid.

Spectrum from 0005.wiff (sample 1) - Luteolin-7- Glucoside, Experiment 13, -TOF MS<sup>2</sup> of 4...lucoside, Experiment 13, -TOF MS<sup>2</sup> of 443.3 to 486.1 (50 - 1000) from 3.302 to 3.536 min)

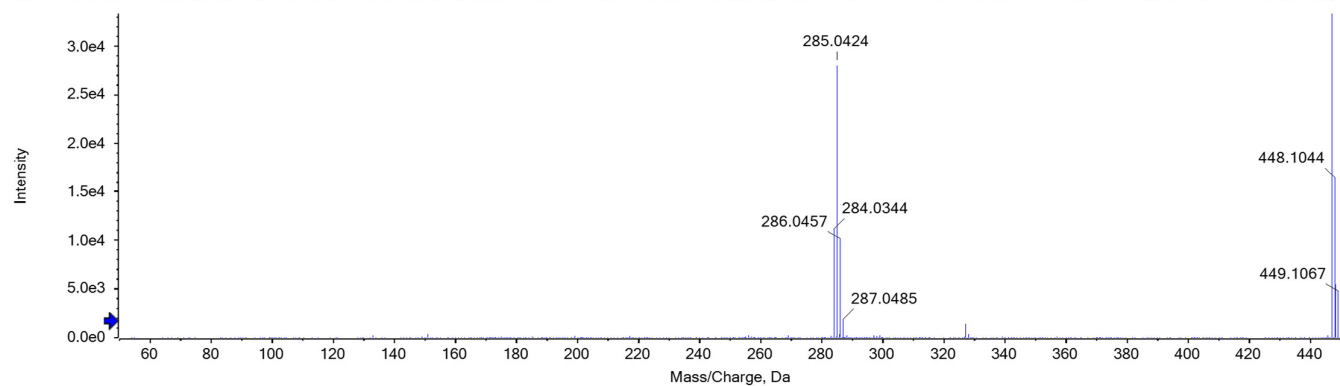


Figure S3. QTOF-MS spectrum of luteolin-7-O-glucoside.

Spectrum from 0008.wiff (sample 1) - Carnosol, Experiment 8, -TOF MS<sup>2</sup> of 307.9 to 334.1 ...Carnosol, Experiment 8, -TOF MS<sup>2</sup> of 307.9 to 334.1 (50 - 1000) from 6.630 to 6.732 min)

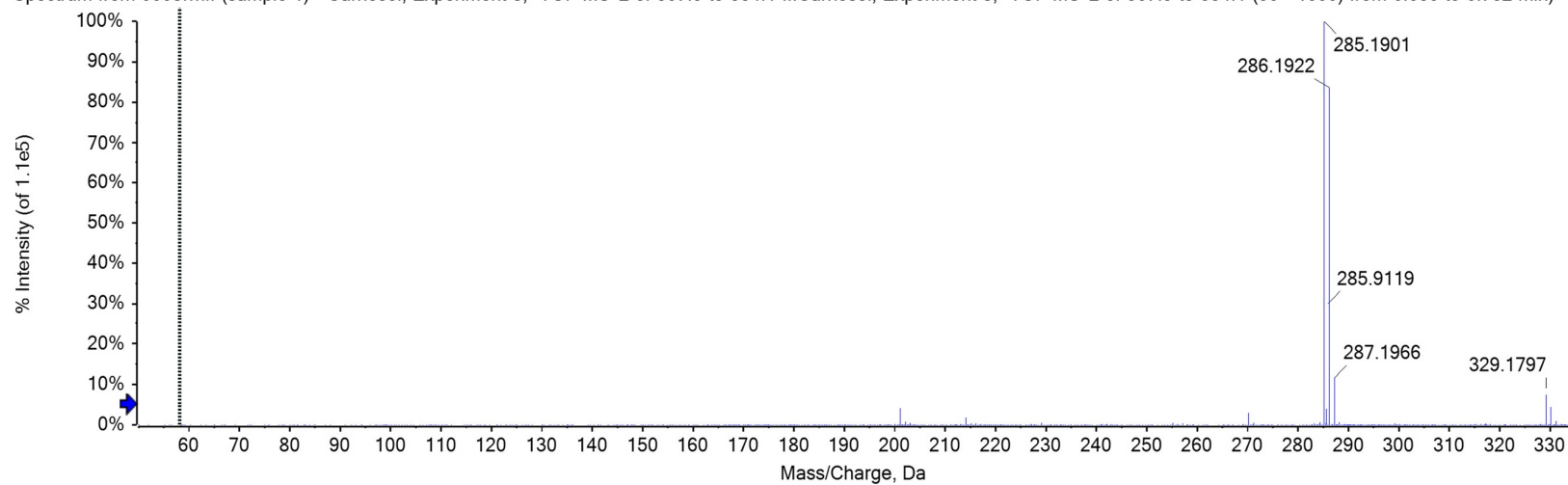


Figure S4. QTOF-MS spectrum of carnosol.

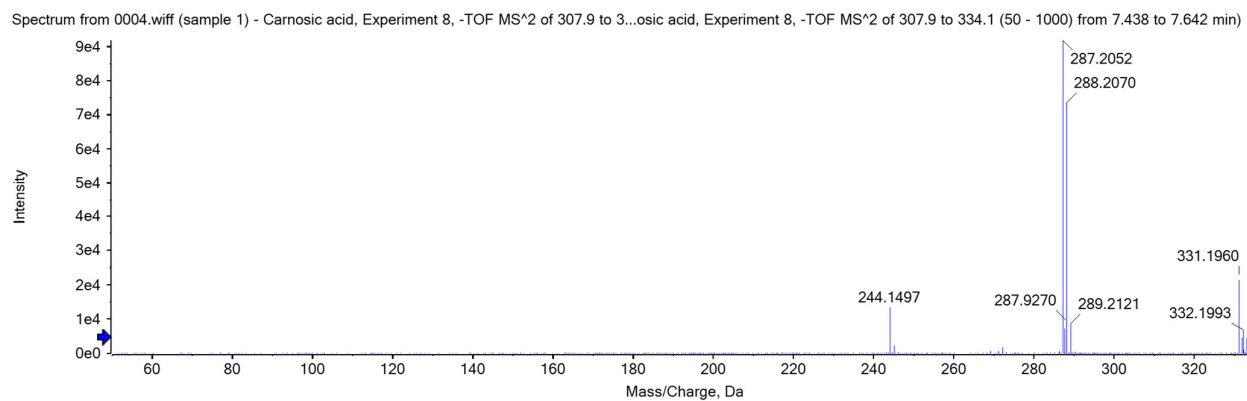


Figure S5. QTOF-MS spectrum of carnosic acid.

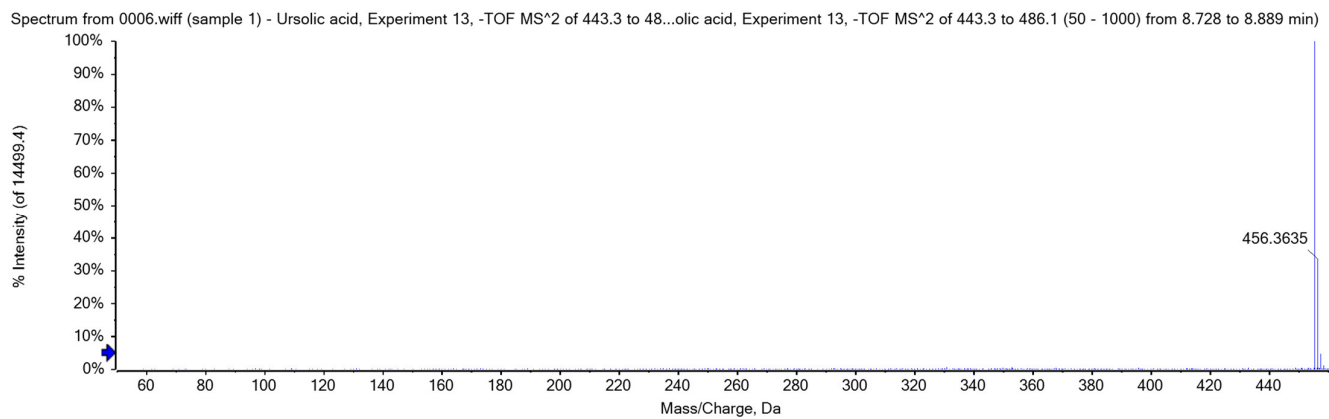


Figure S6. QTOF-MS spectrum of ursolic acid.