

Table S1 Detailed information for antibodies used

Name	Type	Supplier	Catalog #	Origin	Dilution Ratio
β -Actin	mouse monoclonal	Sigma-Aldrich (Merck)	A5441	San Luis, MI, USA	1:1000
p27 ^{Kip1} (Clone G173-524)	mouse monoclonal	BD-Biosciences	#554069	Franklin Lakes, NJ, USA	1:1000
Cyclin D1 (H-295)	rabbit polyclonal	Santa Cruz Biotechnology, Inc.	sc-753	Dallas, TX, USA	1:500
Src-kinases (Src2)	rabbit polyclonal	Santa Cruz Biotechnology, Inc.	sc-18	Dallas, TX, USA	1:1000
pY418-SRC	rabbit polyclonal	Invitrogen	#44660	Camarillo, CA, USA	1:1000
FAK	rabbit polyclonal	Santa Cruz Biotechnology, Inc.	sc-557	Dallas, TX, USA	1:1000
Y925-FAK	rabbit polyclonal	Cell Signaling Technology	CTS#9101	Danvers, MA, USA	1:1000
ERK1/2	rabbit polyclonal	Santa Cruz Biotechnology, Inc.	sc-154	Dallas, TX, USA	1:1000
pT202/pY204-ERK1-2	rabbit polyclonal	Cell Signaling Technology	CST #9101	Danvers, MA, USA	1:1000
AKT	rabbit polyclonal	Santa Cruz Biotechnology, Inc.	sc-8312	Dallas, TX, USA	1:1000
pS473-AKT	rabbit polyclonal	Cell Signaling Technology	CST #9271	Danvers, MA, USA	1:1000
MYC	rabbit polyclonal	Santa Cruz Biotechnology, Inc.	sc-764	Dallas, TX, USA	1:1000
CD133-APC	mouse monoclonal	Miltenyi	130-111-080	Bergisch Gladbach, Germany	1:20
CXCR4-PE	mouse monoclonal	Miltenyi	130-117-354	Bergisch Gladbach, Germany	1:20

Figure S1 – SRC overexpression correlates with CSC-related pathways

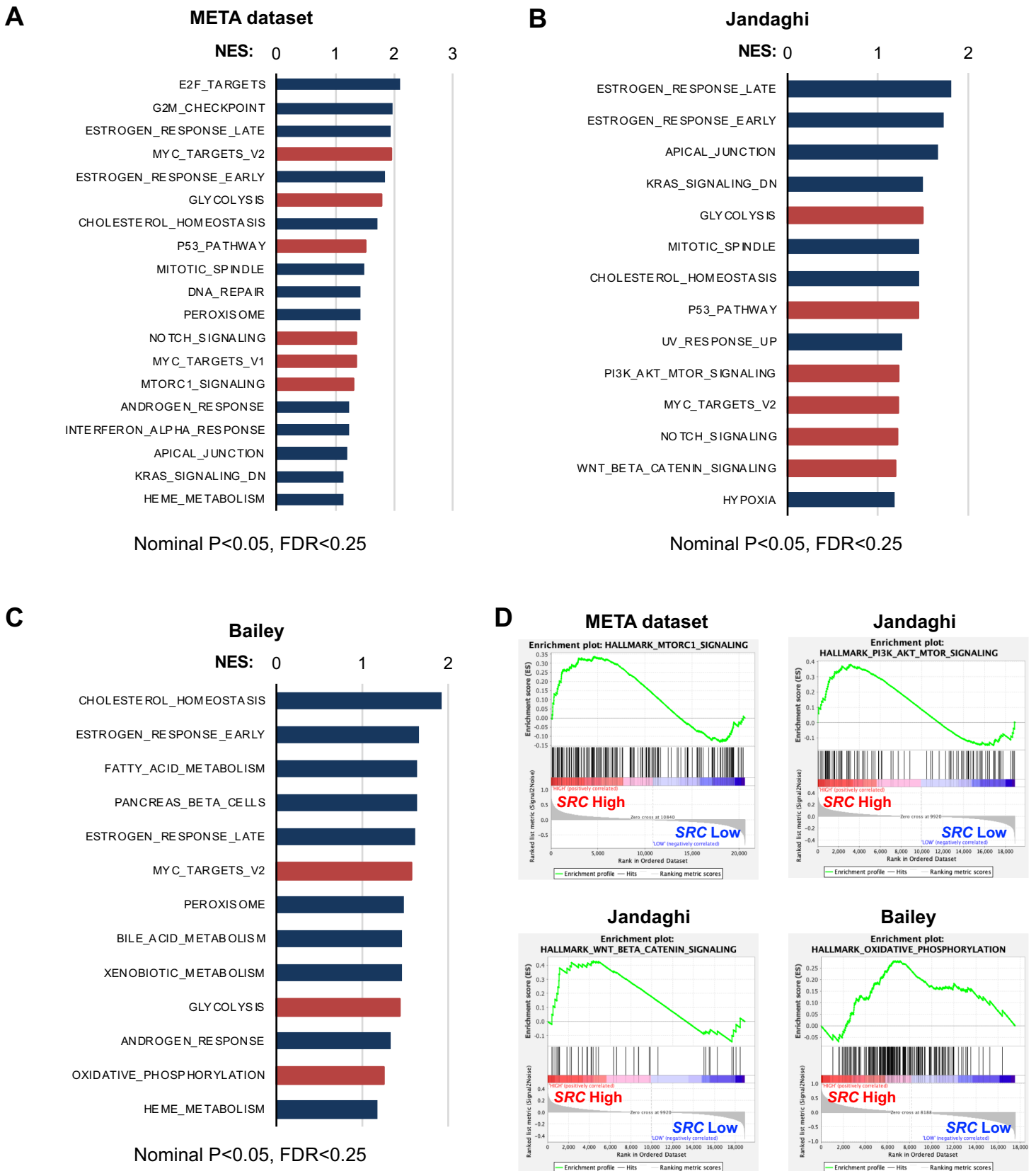


Figure S1. SRC overexpression correlates with CSC-related pathways. (A-C) Pathways enriched in the transcriptional profiles of tumors belonging to the top SRC high expression group, compared with the bottom expression group in the META (A), Jandaghi (B) or Bailey (C) datasets. A nominal p value of <0.05, FDR<25% is considered statistically significant. Shown are the NES values for each pathway using the Hallmark genesets. Stem-related pathways are shown in red. (D) Example enrichment plots for MTORC1, PI3K/AKT/MTOR, WNT/ β -catenin and Oxidative Phosphorylation signaling pathways from the indicated datasets.

Figure S2 – SRC kinase inhibitor-associated toxicity

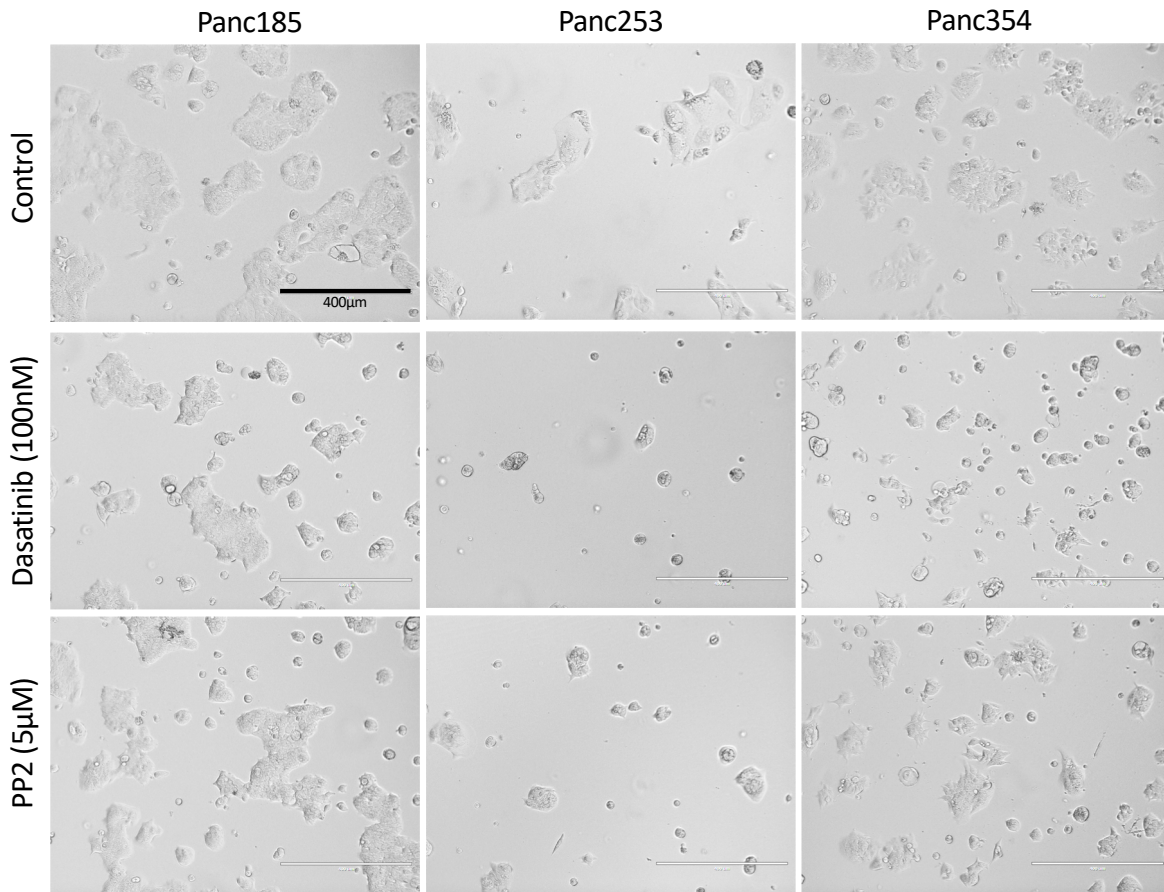


Figure S2. SRC kinase inhibitor-associated toxicity. Light micrographs of Panc185, Panc253 and Panc354 cell viability and growth following long term (7 day) treatment with Dasatinib or PP2 at the indicate concentrations.

Figure S3 – The effect of SRC kinase inhibition on FAK

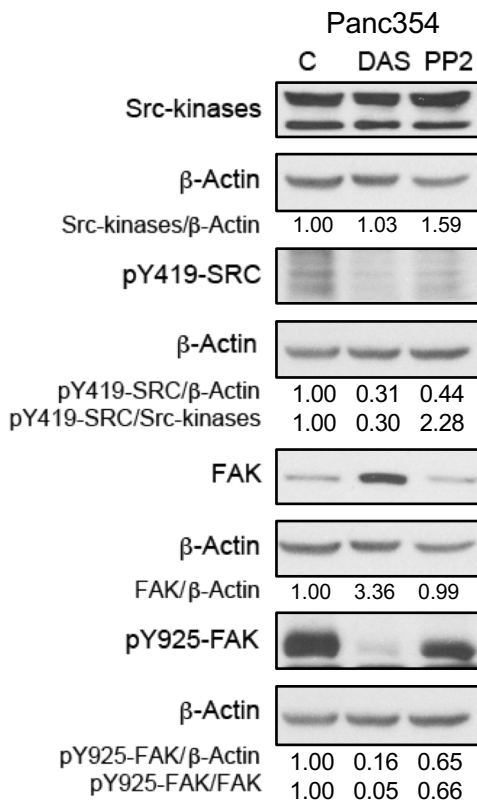


Figure S3. The effect of SRC kinase inhibition on FAK. WB analysis of SRC kinases and pY419-SRC protein expression (top) or FAK and pY925-FAK (bottom) in control-, PP2- or Dasatinib (DAS)-treated Panc185 or Panc253 PaCSCs. The indicated ratios for pY419-SRC/SRC-kinases and pY925-FAK/FAK were determined and shown are the fold-changes, setting control diluent(C)-treated cells as 1.0.

Figure S4 – Uncropped immunoblot images

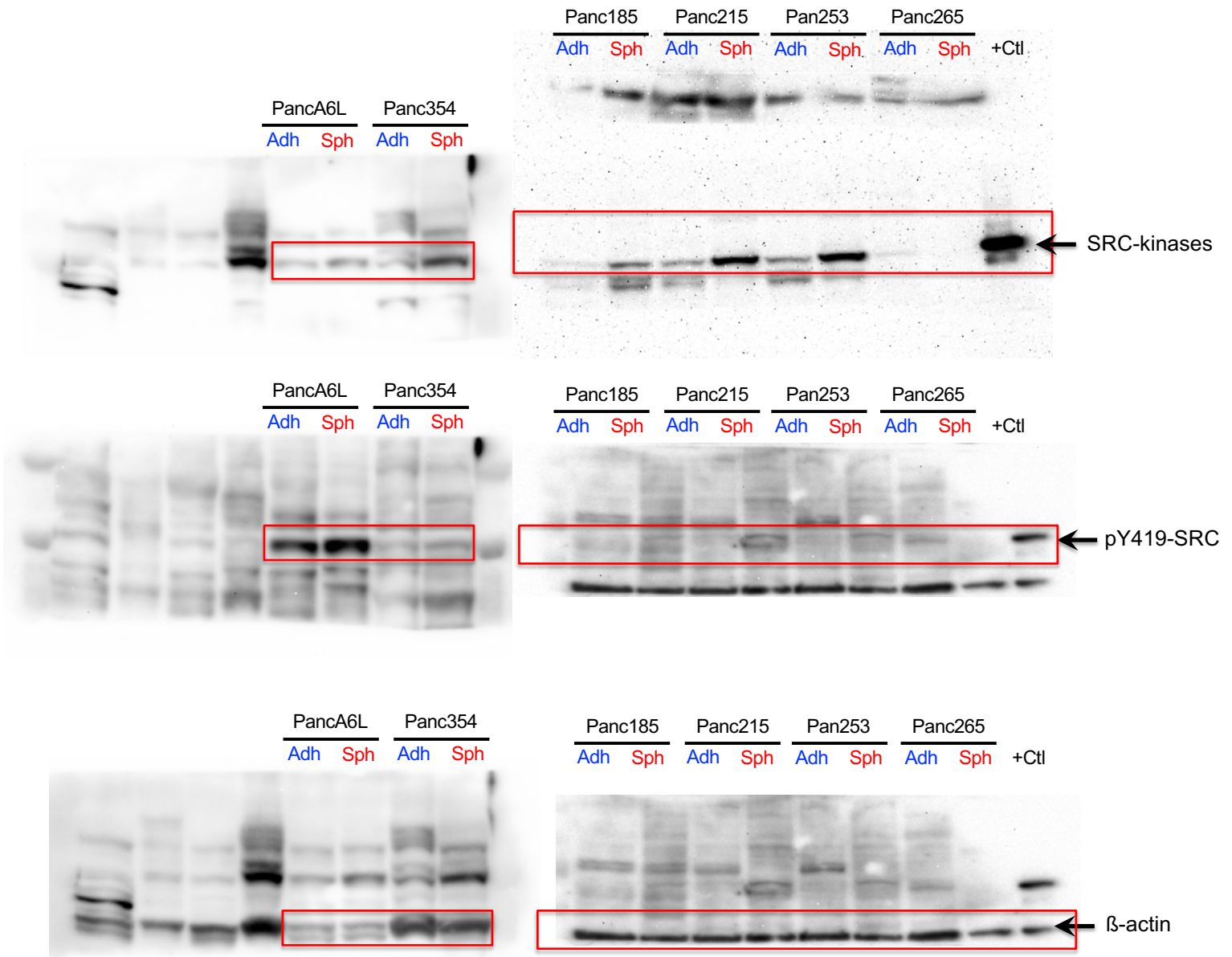


Figure S4 – Uncropped immunoblot images - continued

Unprocessed images for Figure 5

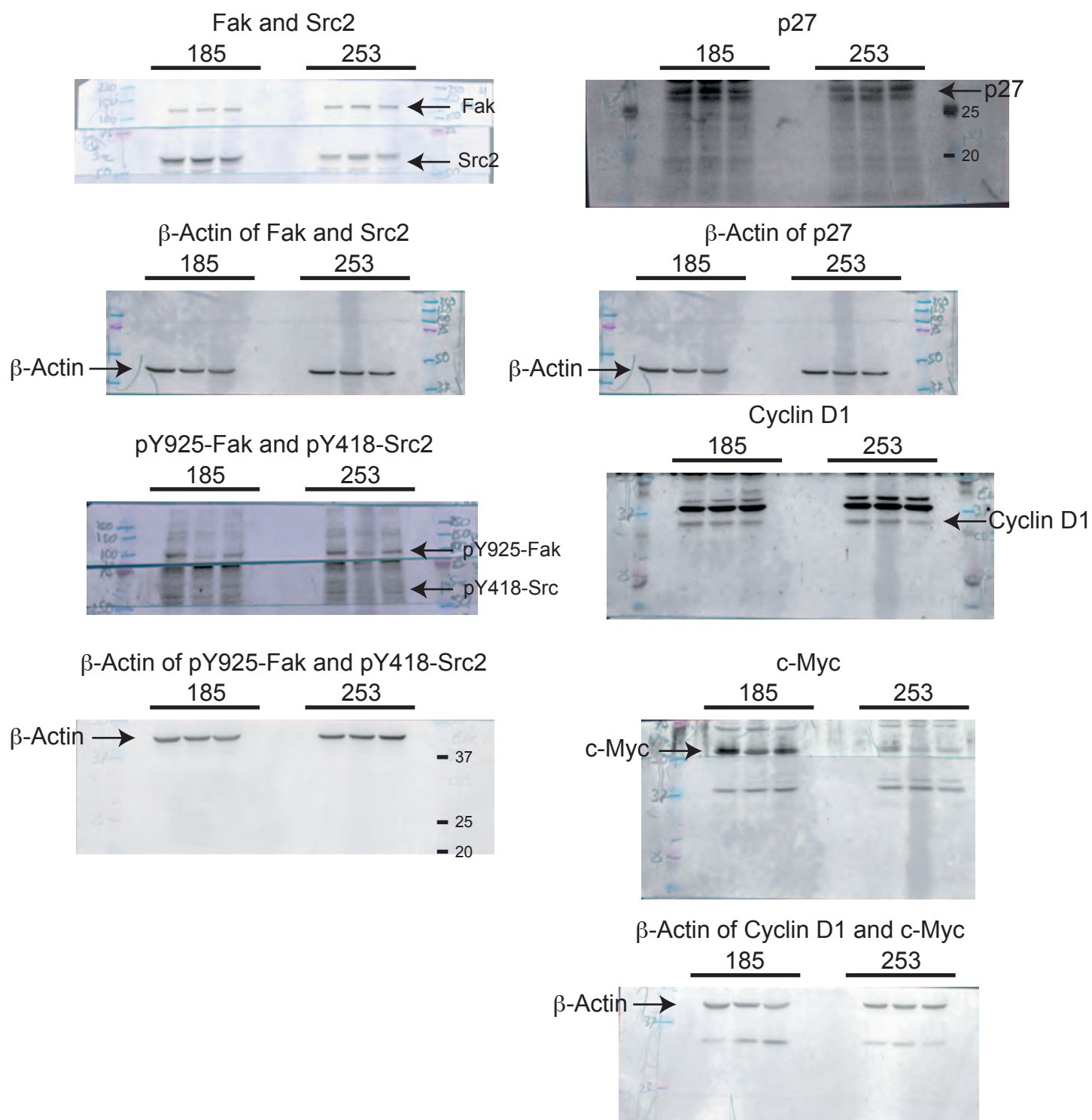


Figure S4 – Uncropped immunoblot images - continued

Unprocessed images for Figure 5 - continued

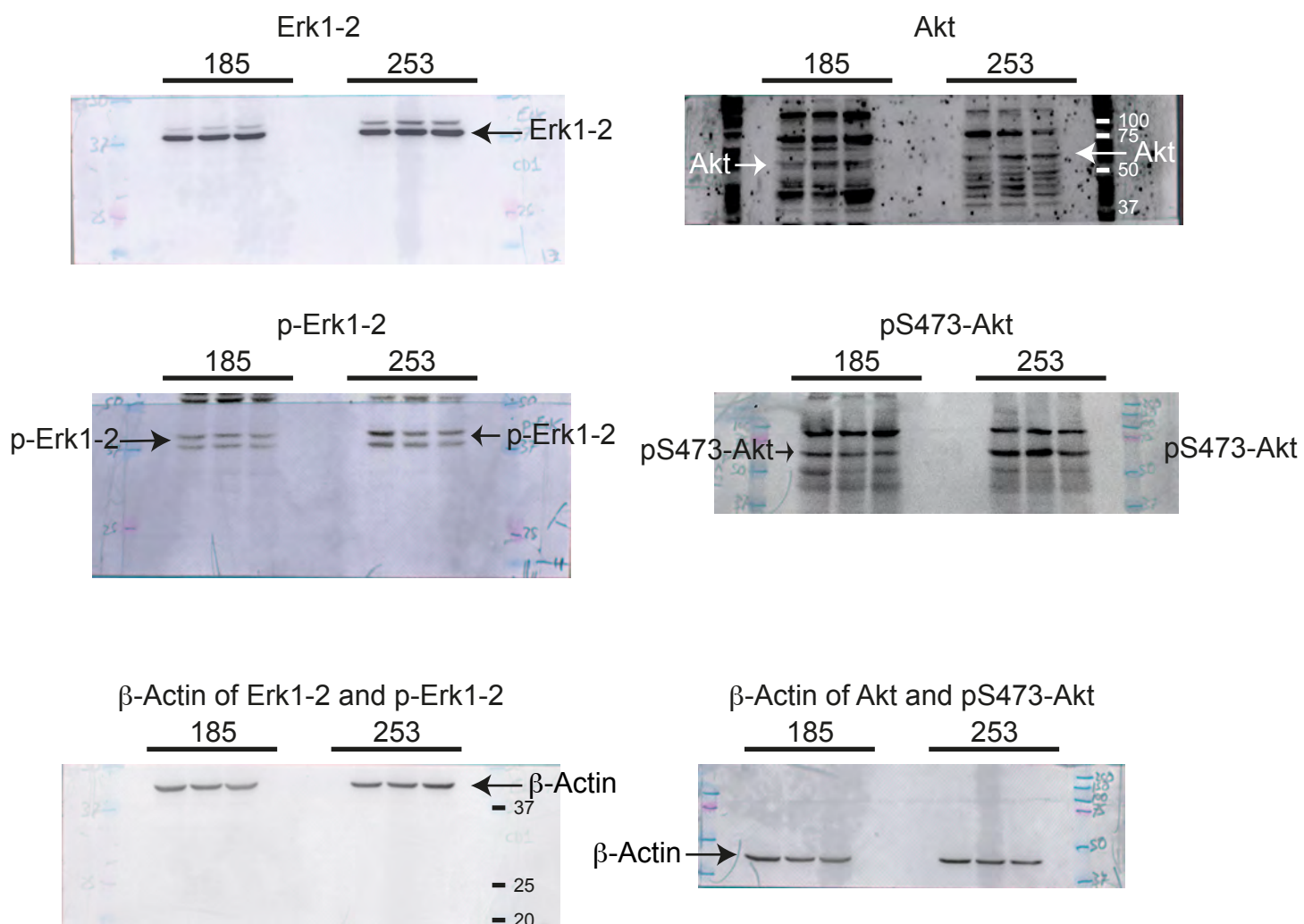


Figure S4 – Uncropped immunoblot images - continued

Unprocessed images for Supplementary Figure S3

