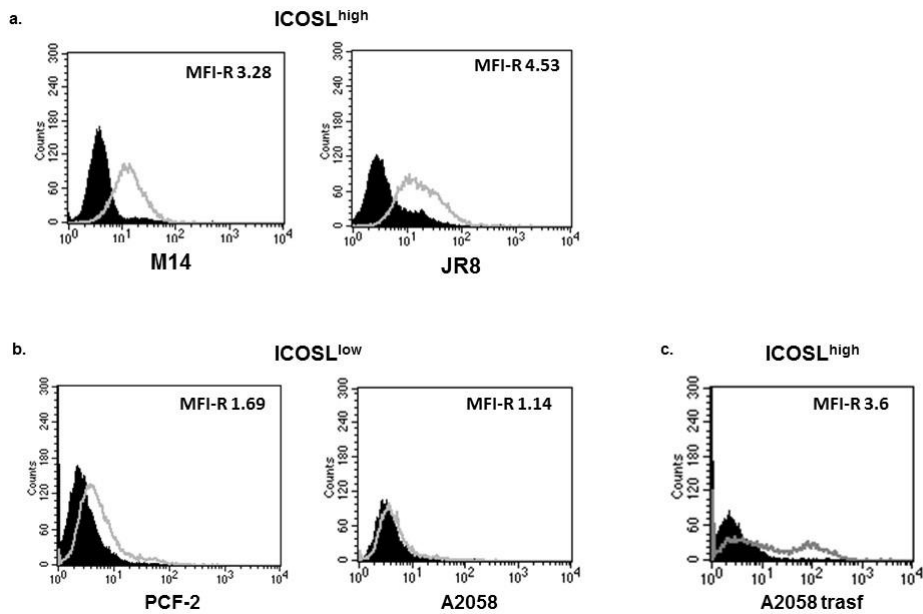


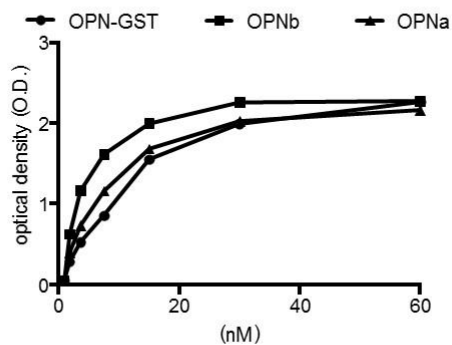
## Supplemental item titles and legends

### ICOSL expression in human melanoma cell lines



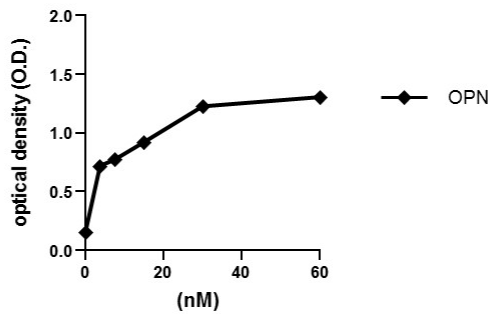
**Supplementary Figure 1. ICOSL expression in human melanoma cell lines.** a ICOSL expression was assessed by flow cytometry. MFI-ratio  $>2$  identified HIGH expressing cells (a- M14, JR8) while MFI-ratio  $<2$  identified LOW expressing cells (b- PCF-2 and A2058). c ICOSL expression in A2058 cell line, after ICOSL transfection (MFI-R).

### ELISA-based interaction assay



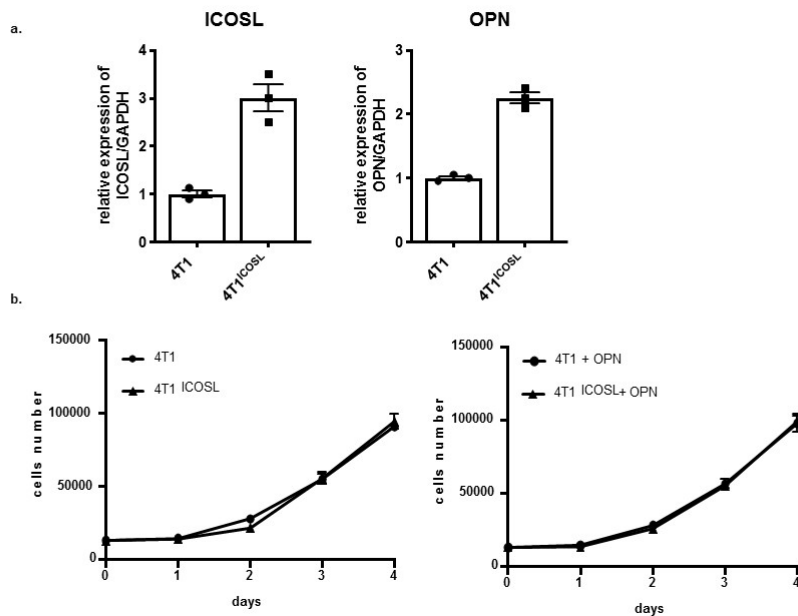
**Supplementary Figure 2. ELISA-based interaction assay.** The graph shows the interaction of titrated amounts of soluble ICOSL-Fc with a fixed amount of OPN-GST, OPN isoform-a and OPN isoform-b coated on the plate. (black circle) shows OPN-GST, (black square) OPN-b and (black triangle) OPN-a. Data are expressed as means  $\pm$  standard error (n=3 technical replicate).

Reciprocal ELISA-based interaction assay



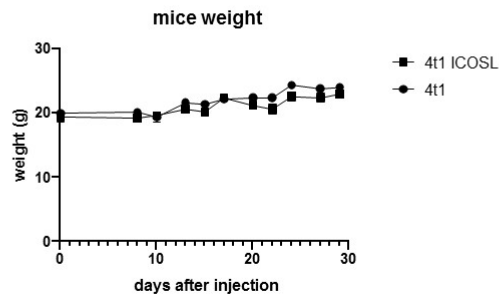
**Supplementary Figure 3. Reciprocal ELISA-based interaction assay.** The graph shows the interaction of titrated amount of OPN with a fixed amount of ICOSL-Fc (black square). Data are expressed as means  $\pm$  standard error (n=3 technical replicate).

*In vitro* characterization of 4T1<sup>ICOSL</sup> transfected cells



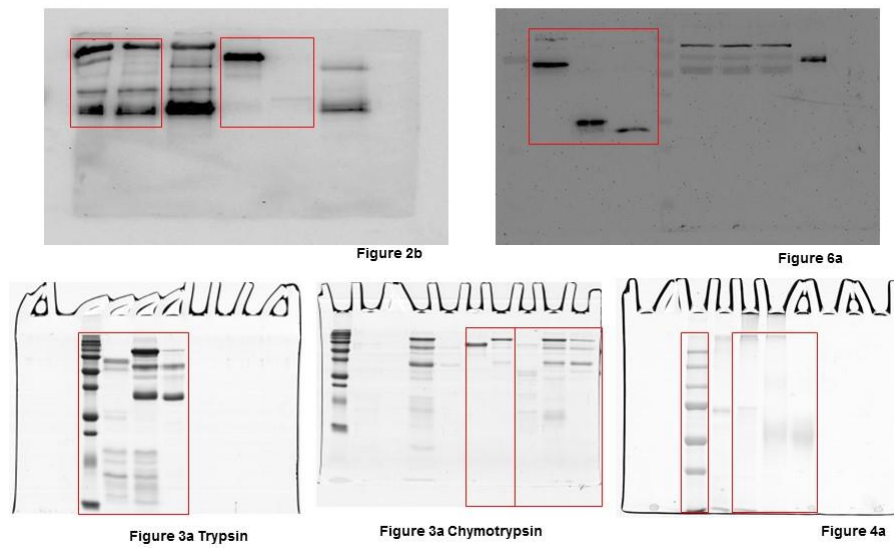
**Supplementary Figure 4. *In vitro* characterization of 4T1<sup>ICOSL</sup> transfected cells.** **a** Relative quantification of ICOSL and OPN gene expression assessed by real-time PCR in 4T1 cell line and upon ICOSL transfection (4T1<sup>ICOSL</sup>). Data are shown as the mean gene expression relative to the expression of the endogenous control GAPDH ( $2^{-\Delta Ct}$  method) (n=3 technical replicate). The dot plot represents one of two independent experiments. **b** Kinetic growth assay of 4T1 and 4T1<sup>ICOSL</sup> transfected cells in the presence and absence of OPN (n=4 technical replicate), the dot plot represents one of two independent experiments; cell counts were determined after trypan blue staining. Data are expressed as means  $\pm$  standard error.

Body weight of mice injected with 4t1 and 4T1<sup>ICOSL</sup> cells



**Supplementary Figure 5. Body weight of mice injected with 4T1 and 4T1<sup>ICOSL</sup> cells.** Data are shown as mean  $\pm$  standard error (n=5 biological replicate per group)

Uncropped blots and gels



**Supplementary Figure 6. Uncropped blot used in figure 2b, 3a, 4a and 6a.**