

Figure S1. Expression levels of selenoproteome in normal tissues of colon, esophagus, liver, lung and stomach. The brightness in red represents the relative expression levels.

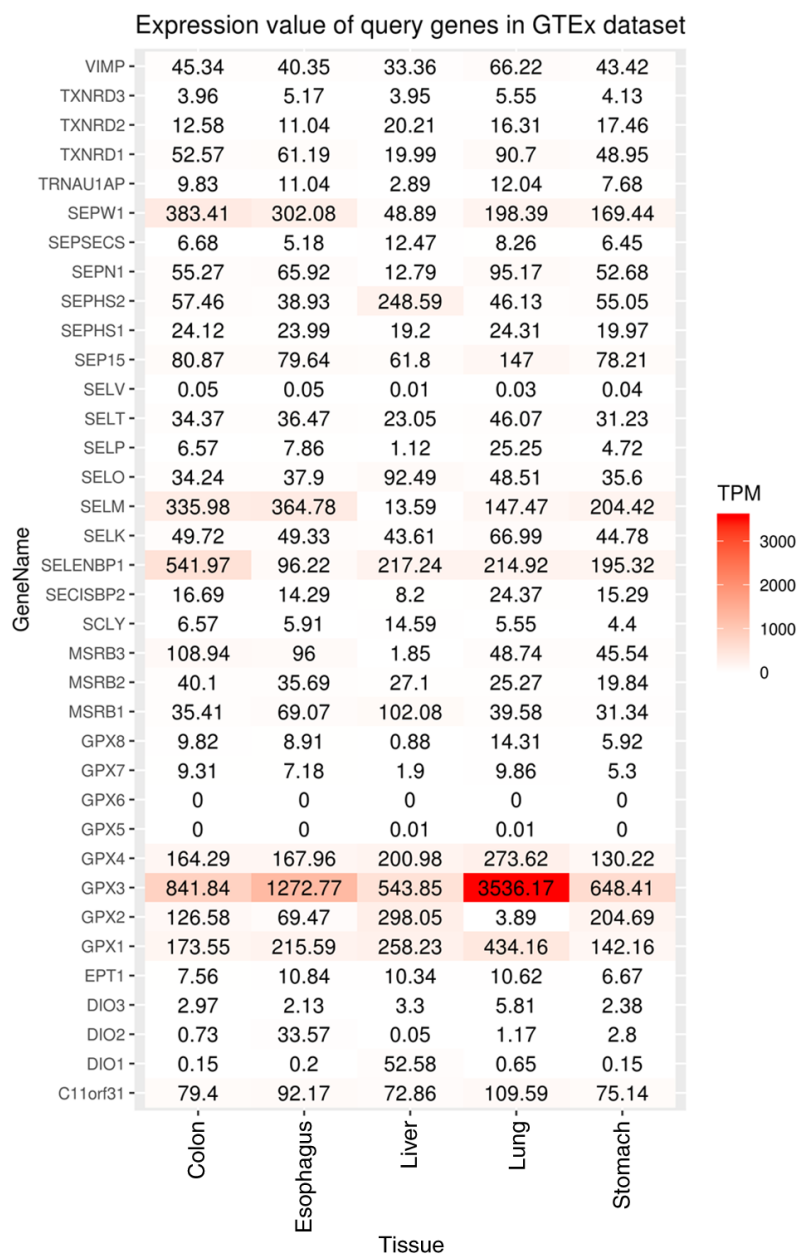


Figure S2. The overall survival analysis of GPX3, GPX8, SELENOW, SELENOK, SELENBP1 and SECISBP2 in lung cancer by the Kaplan Meier plotter.

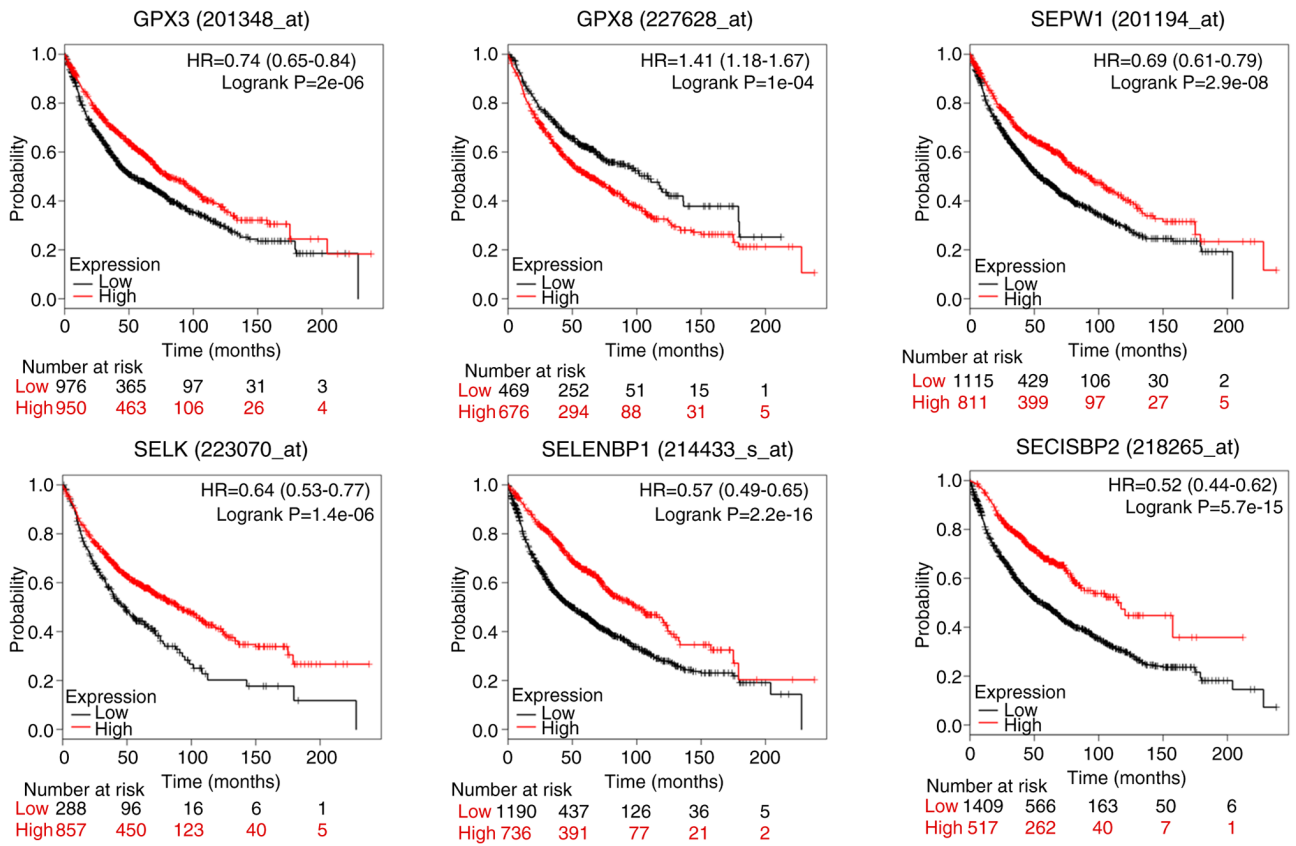


Figure S3. The overall survival analysis of SELP, TXNRD1 and SEPHS1 in liver cancer by the Kaplan Meier plotter.

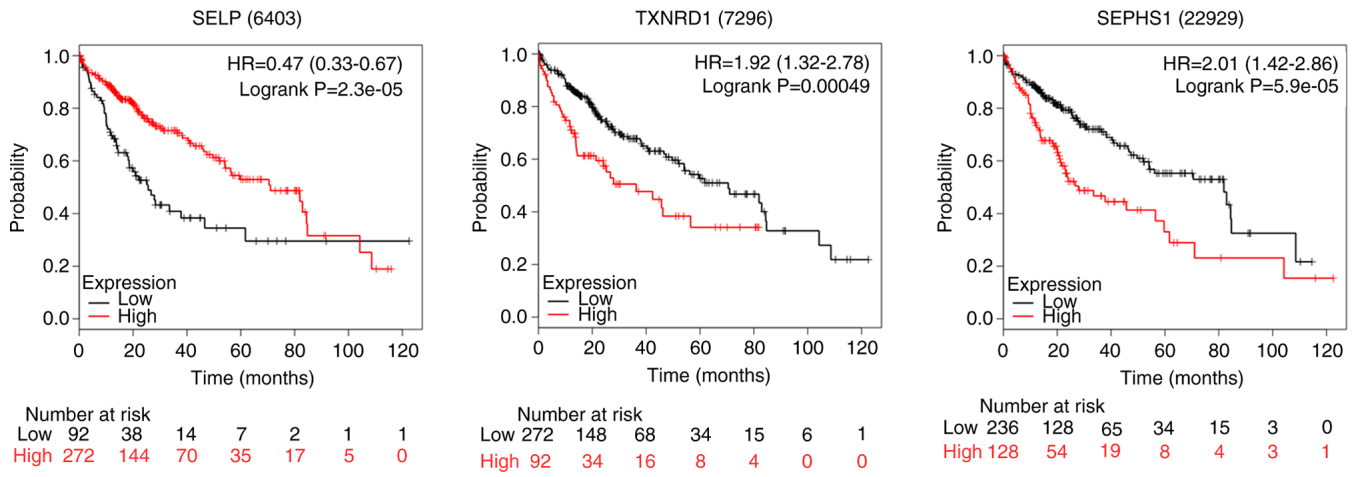


Figure S4. The SNV analysis of selenoproteome in colon adenocarcinoma by GSCALite. COAD, colon adenocarcinoma.

