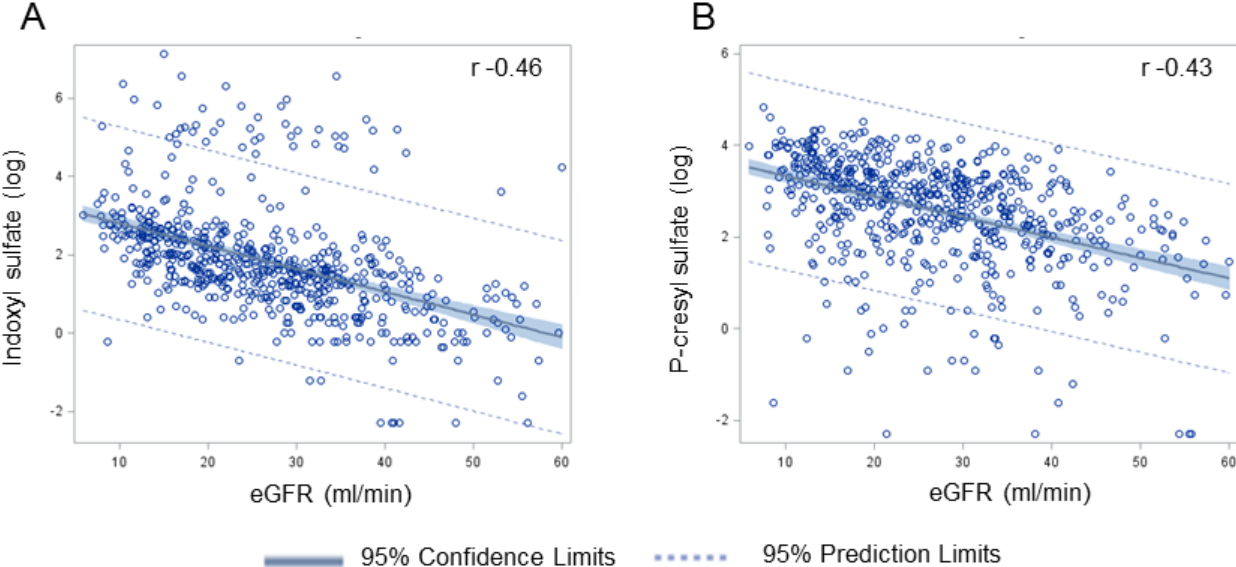


S1 Fig. Log-transformed serum levels of indoxyl sulfate (A) and p-cresyl sulfate (B) are correlated with eGFR in 604 children with chronic kidney disease at study entry.



Linear regression of log-transformed serum levels of indoxyl sulfate (IS) and p-cresyl sulfate (pCS) showed a significant correlation with eGFR (Pearson correlation coefficient $r = -0.46$ for IS and $r = -0.43$ for pCS). 45 patients had IS levels above the 95% upper prediction limit (UPL). While no patients had pCS levels above the 95% UPL, some patients had pCS levels below the 95% lower prediction limit.