

# Short Term Cold Stress and Heat Shock Proteins in the Crustacean, *Artemia franciscana*

*Yayra A. Gbotsyo*<sup>1</sup>, *Nathan M. Rowarth*<sup>1</sup>, *Laura K. Weir*<sup>2, \*</sup>,  
*Thomas H. MacRae*<sup>1</sup>

1. *Department of Biology, Dalhousie University, Halifax, N. S. B3H 4R2, Canada*
2. *Biology Department, Saint Mary's University Halifax, N. S. B3H 3C3, Canada*

Corresponding author:

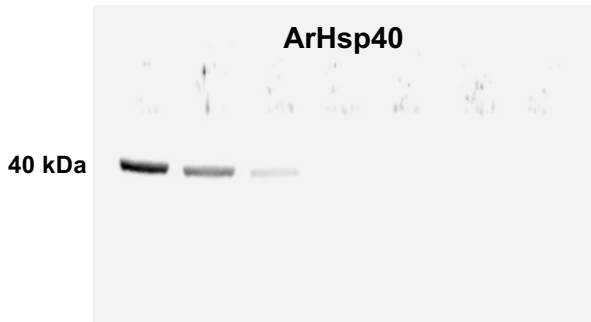
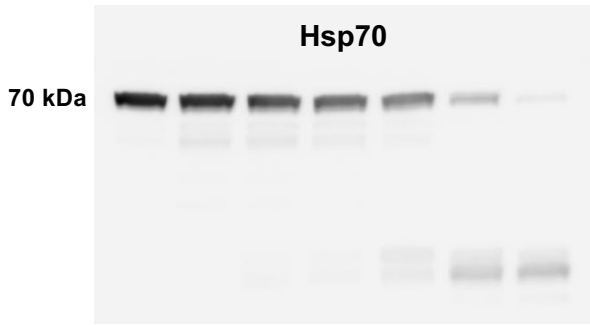
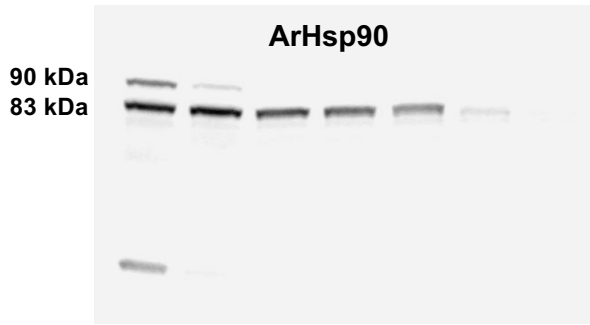
Laura K. Weir

E-mail: [laura.weir@smu.ca](mailto:laura.weir@smu.ca)

Running title: Hsps and cold stress in *Artemia franciscana*

**a** 27°C

0h 3h 6h 6.5h 8h 10h 12h



**b** 1°C 27°C

0h 3h 6h 6.5h 8h 10h 12h

