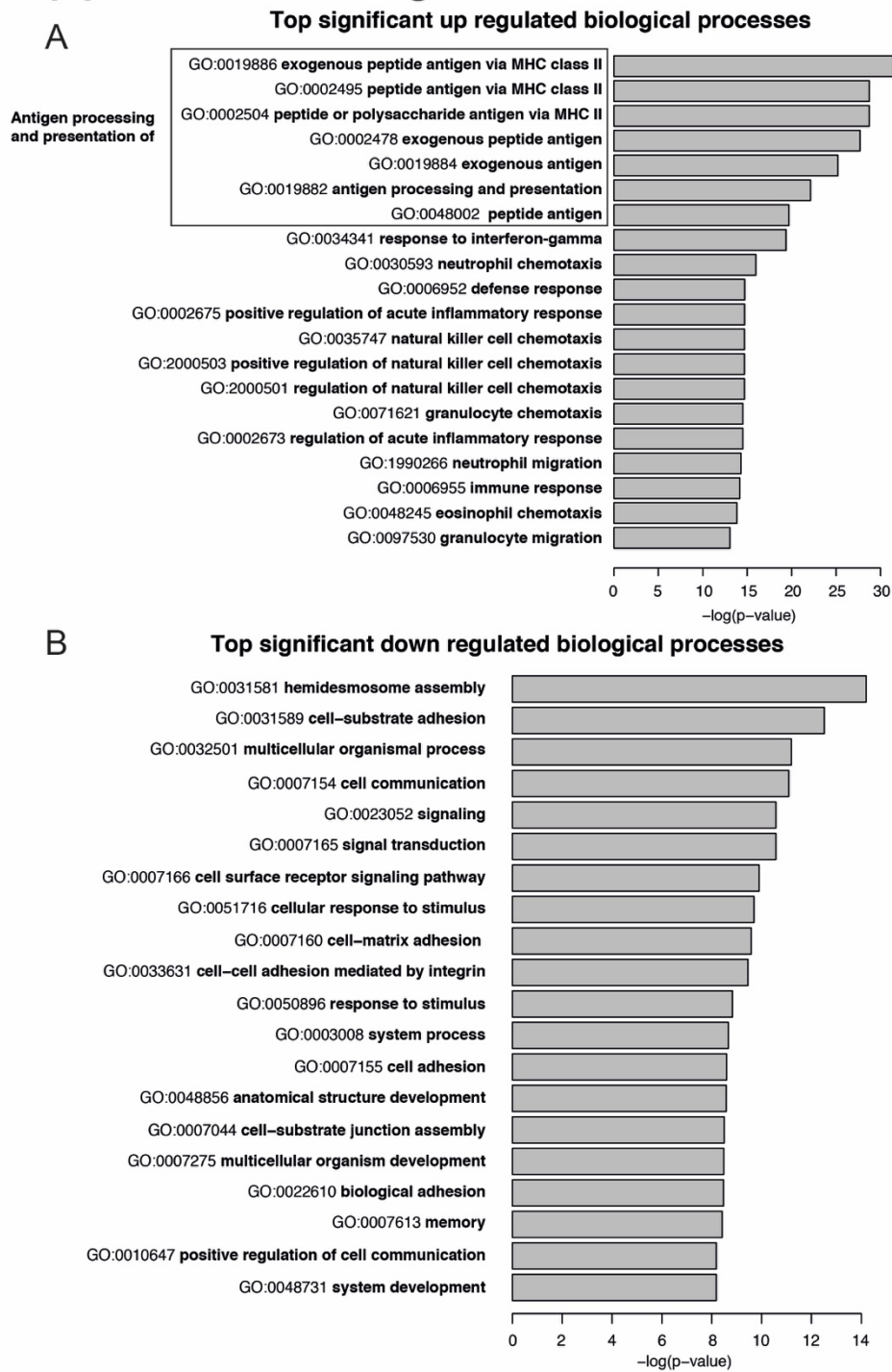
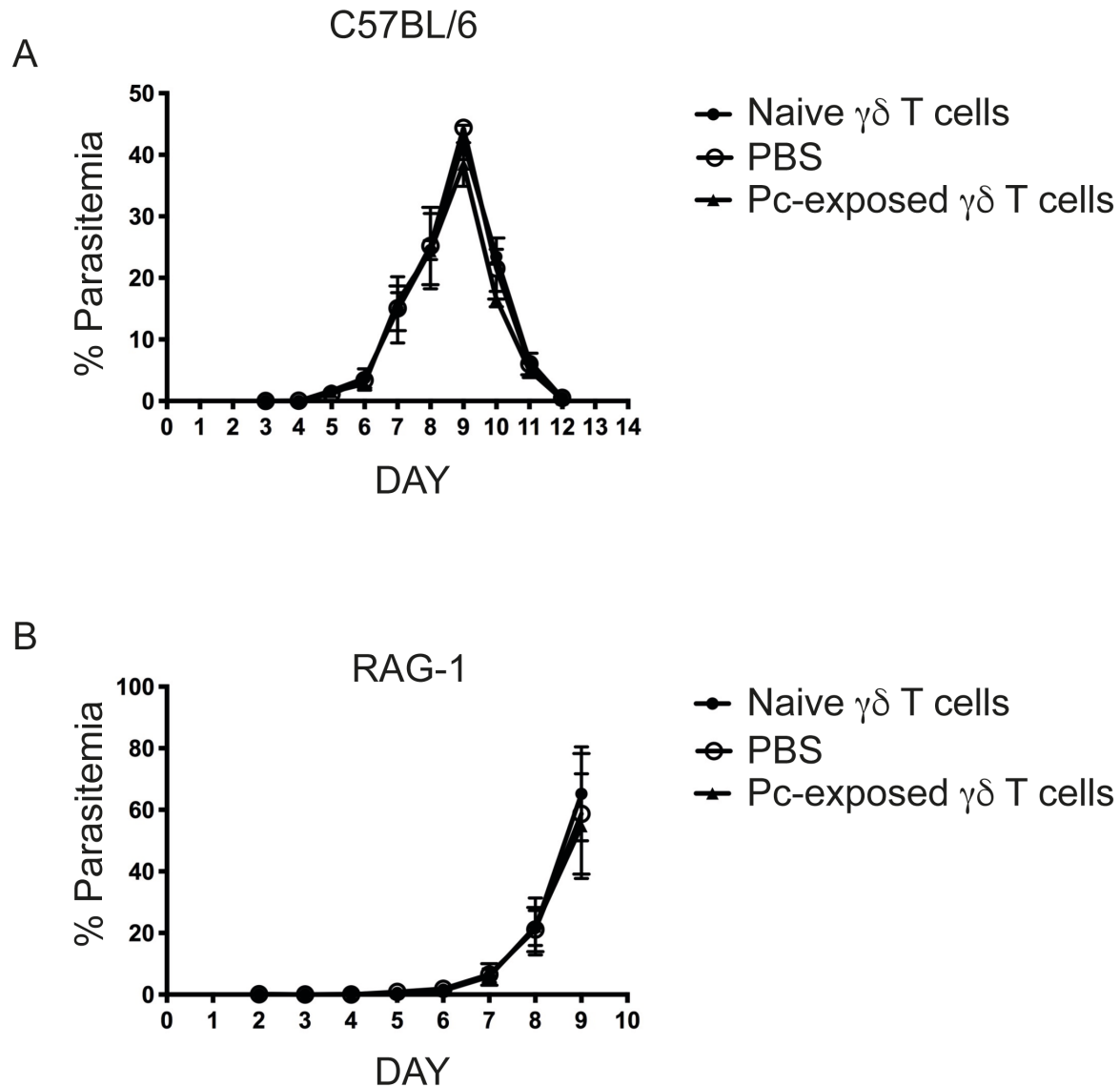


Supplemental Figure 1



Supplemental Figure 1. Pathway analysis of differentially expressed genes. Gene Ontology (GO) terms for the differentially expressed genes were identified and the top 20 significantly A) upregulated and B) down regulated biological processes are presented.

Supplemental Figure 2



Supplemental Figure 2. Parasitemia following adoptive transfer of *P. chabaudi*-exposed $\gamma\delta$ T cells. $\gamma\delta$ T cells were isolated from spleens of naïve mice (filled circle) or *P. chabaudi*-exposed mice (filled triangle). These cells were then adoptively transferred into A) C57BL/6 mice (Naïve $\gamma\delta$ T cells n=4, Pc-exposed $\gamma\delta$ T cells n=4, PBS n=3) or B) RAG-1 mice ((Naïve $\gamma\delta$ T cells n=7, Pc-exposed $\gamma\delta$ T cells n=6, PBS n=8) 1 day post infection of recipient mice. Control mice received no cells, but were injected with PBS (open circles) 1 day post infection. Parasitemia was determined daily by thin blood smears. Statistical analysis was performed using Multiple t-tests, Holm-Sidak method.

Supplemental Table 1. Differentially expressed genes in resting EM $\gamma\delta$ T cells for *P. chabaudi* exposed mice over naïve mice relative to a fold change threshold of 1.5.

GeneID	Symbol	logFC	P.Value	adj.P.Val	GeneID	Symbol	logFC	P.Value	adj.P.Val	GeneID	Symbol	logFC	P.Value	adj.P.Val
16640	Klra9	3.39044649	1.42E-08	0.00018394	12047	Bcl2a1d	1.58363573	0.00016267	0.0220893	381605	Tbc1d2	-3.9868935	0.00062098	0.04341456
20302	Ccl3	2.61819118	3.59E-08	0.00023202	546643	I830127L07R	2.64517731	0.00016386	0.0220893	100042335	Rps15a-ps15	1.50810763	0.00062536	0.0438578
140919	Sic17a6	8.58584287	1.29E-07	0.00055684	231380	Uba6	-1.9325607	0.00016425	0.0220893	230787	Themis2	2.91912847	0.00063685	0.04378543
20303	Ccl4	2.92039006	2.31E-07	0.00074802	20379	Sfrp4	5.47280312	0.00016729	0.0220893	14130	Fcgr2b	4.14352871	0.00064223	0.04378543
17181	Matn2	-3.0656979	7.88E-07	0.00175484	213498	Arhgef11	-2.4534256	0.00016883	0.0220893	633188	Gm20762	1.53664557	0.00064238	0.04378543
20668	Sox13	-2.9775554	8.14E-07	0.00175484	19401	Rara	-1.64897025	0.00016945	0.0220893	100124677	Tfrib13-3	1.88412132	0.00064321	0.04378543
14961	H2-Ab1	3.34151569	1.29E-06	0.00209603	11958	Atp5k	1.71041274	0.00017328	0.0220893	226519	Lamc1	-2.9979216	0.00066007	0.0451856
14969	H2-Eb1	3.06629838	1.47E-06	0.00209603	547023	Gm6014	1.59037474	0.00017408	0.0220893	73945	Otus4	-1.6303022	0.00066086	0.04451856
16638	Klra8	3.39858743	1.58E-06	0.00209603	100038467	A630072L19L	-3.1879796	0.00017412	0.0220893	100042173	Rps15a-ps6	1.64503684	0.00066518	0.04457726
244233	Cd163l1	-3.6734629	1.63E-06	0.00209603	104759	Plid4	2.23339953	0.0001742	0.0220893	14104	Fasn	-2.1972034	0.0006725	0.04483534
192897	Irgb4	-4.2356539	1.78E-06	0.00209603	20335	Sec61g	1.71316333	0.00018335	0.02285935	66790	Gm8451	1.6598696	0.0006883	0.04547373
104001	Rtn1	6.32010768	2.01E-06	0.00210703	66141	Iiftm3	3.1891748	0.00018393	0.02285935	16402	Irga5	-1.8821888	0.00068999	0.04547373
320712	Abi3bp	-2.687706	2.24E-06	0.00210703	16963	Xcl1	1.67046898	0.00018558	0.02285935	20602	Ncor2	-1.9287641	0.00069262	0.04547373
14960	H2-Aa	3.74438646	2.28E-06	0.00210703	333789	N4bp2	-2.1499791	0.00020016	0.0244229	242202	Pde5a	-1.6322369	0.00069731	0.04555069
67971	Tppp3	-3.3576541	3.87E-06	0.00333899	93736	Aff4	-1.6704461	0.00020374	0.02462745	11690	Alox5ap	3.92836672	0.00070132	0.04558242
67784	Phnd1	-3.6726208	5.56E-06	0.00445659	18636	Ctp	2.5068855	0.00021903	0.0261136	213121	Ankrd35	-2.7322028	0.00072014	0.0465715
76933	Hfz72a	1.9771099	5.86E-06	0.00445659	19724	Rbx1	-1.7988245	0.00022007	0.0261136	319565	Syne2	-1.6112692	0.00073176	0.04683652
16149	Cd74	2.9311707	7.00E-06	0.00484936	99031	Oxlp6	-5.4399794	0.00022644	0.02650221	100416706	Zfp729b	-1.5515733	0.00073552	0.04683652
16407	Iltgae	-1.9508531	7.15E-06	0.00484936	242474	Tmem245	-1.9398074	0.00022926	0.02650221	19861	Rnu30a	1.65181887	0.00073906	0.04683652
16525	Kcnk1	-2.2320014	7.98E-06	0.00484936	105203	Fam208b	-2.1364652	0.00022949	0.02650221	19941	Rpl26	1.45725058	0.00073872	0.04683652
108105	R3gnt5	-2.1318702	8.00E-06	0.00484936	14419	Gal	5.23497664	0.00023627	0.02703276	268670	Zfp759	-3.0108621	0.00078001	0.04914534
75124	Nxn1l	-3.9675443	8.25E-06	0.00484936	27278	Clnk	-3.1480376	0.00023855	0.02703276	11941	Atp2b2	3.6400329	0.00078303	0.04914534
64074	Smoc2	3.22005352	9.93E-06	0.00558654	106064	AW549877	-1.4559389	0.00024242	0.02703276	16909	Lmo2	2.9502143	0.00078654	0.04914534
320940	Atp11c	-3.0596644	1.18E-05	0.0063155	58800	Trpm7	-1.6515186	0.00024546	0.02703276	57890	Il17re	-1.4806967	0.00079281	0.04929907
14127	Fcer1g	2.28114455	1.22E-05	0.0063155	100114901	Trdv4	-3.1632699	0.00024666	0.02703276	74002	Psd2	-3.1439883	0.00079855	0.04941853
22700	Zfp40	-2.8183597	1.34E-05	0.00667617	546336	Prrg1	-3.7274869	0.00024663	0.02703276	100134990	Selenocp1	1.71535575	0.00080446	0.04954681
16628	Klra10	3.17360354	1.52E-05	0.00728868	100042480	Nhs1d2	-2.3384695	0.00024908	0.02707175	19850	Rnu3a	2.22061571	0.00081795	0.0499763
56620	Clec4n	5.47291964	1.61E-05	0.00737075	70882	Armc3	2.09645514	0.00025411	0.02738847	226641	Atf6	-1.767882	0.00082072	0.0499763
16728	L1cam	-2.6150969	1.70E-05	0.00737075	212281	Zfp729a	-1.8037739	0.00026404	0.02822362	100039988	Gm11826	1.85151395	0.00082302	0.0499763
16177	Il1r1	-3.0255573	1.71E-05	0.00737075	11305	Abca2	-2.1059443	0.00026962	0.02849805					
94180	Acsb1	-2.1520114	1.78E-05	0.00742548	80876	Ifitm2	4.33771	0.00027444	0.02849805					
434179	Zfp975	-2.7566189	1.93E-05	0.00781934	18798	Pibca4	-1.8991147	0.00027573	0.02849805					
12143	Btk	-2.0813922	2.03E-05	0.00786837	668548	Gm9234	1.5886041	0.00027762	0.02849805					
109689	Arrb1	-2.4470744	2.12E-05	0.00786837	19942	Rpl27	1.49528932	0.0002779	0.02849805					
105298	Epdrl	2.29149016	2.13E-05	0.00786837	13848	Ephb6	-2.1407699	0.0002806	0.02849805					
66857	Pibd1	3.1880755	2.23E-05	0.00800138	623286	Gm6415	1.73980233	0.00028276	0.02849805					
27403	Abca7	-2.2961181	2.44E-05	0.00853689	64380	Ms4a4c	1.56184576	0.0002846	0.02849805					
19225	Ptgs2	5.48449503	2.92E-05	0.00951065	18799	Plcd1	-2.9029124	0.00028877	0.02849805					
240034	Zfp760	-2.6778093	2.94E-05	0.00951065	232157	Mob1a	-1.8235198	0.00029138	0.02849805					
20304	Ccl5	1.80542457	2.94E-05	0.00951065	100310809	Gm10509	-1.9455024	0.00029467	0.02849805					
12959	Cryba4	-3.1216169	3.33E-05	0.0104986	85030	Tnfrsf25	1.5834613	0.00029471	0.02849805					
217169	Tms4	-3.4001073	3.66E-05	0.0111969	20874	Sik	-1.6840805	0.00029525	0.02849805					
320832	Sirp1a1a	4.11075448	3.72E-05	0.0111969	80876	Ifitm2	3.33823857	0.00030793	0.02936592					
15000	H2-DMb2	3.4752987	4.52E-05	0.01299018	70747	Tspan2	-3.1933786	0.00031025	0.02936592					
217166	Nr1d1	-1.8385267	4.55E-05	0.01299018	217344	Rhbdf2	-1.9191638	0.00031105	0.02936592					
23833	Cd52	1.54680848	4.62E-05	0.01299018	17970	Ncf2	2.34277338	0.00032008	0.02985542					
480868	Zfp738	-2.231938	5.04E-05	0.01382819	74206	Sipa1l3	-2.870379	0.00032085	0.02985542					
20441	St3gal3	-2.4250712	5.16E-05	0.01382819	57295	Icmt	-2.7002589	0.00032518	0.03004208					
16541	Napsa	1.82045567	5.24E-05	0.01382819	103012	Firre	-2.885473	0.00033104	0.03036672					
73218	Sppl2b	-1.9845924	5.47E-05	0.01415938	235682	Zfp445	-1.6368334	0.00033843	0.03065132					
22177	Tyrobp	2.0377819	5.85E-05	0.01470045	664903	Rps15a-ps4	1.52584779	0.00033889	0.03065132					
69623	Zfp33b	-2.2383166	6.00E-05	0.01470045	71679	Atp5h	1.46354865	0.00034347	0.03085009					
327957	Scamp	2.36750583	6.24E-05	0.01470045	595139	E030024N20	1.9564233	0.00035041	0.03105678					
231507	Plac8	2.10617985	6.26E-05	0.01470045	54127	Rps28	1.63489106	0.00035057	0.03105678					
27375	Tjp3	-1.9661036	6.27E-05	0.01470045	442834	D830031N03	-5.6264778	0.00035118	0.03160264					
188310	Plec	-2.0152577	6.45E-05	0.01470045	232286	Tmf1	-1.841913	0.00037438	0.03271751					
13924	Ptprv	-2.1715927	6.55E-05	0.01470045	209590	Il23r	-1.5742096	0.00038148	0.03311473					
52673	D13ErtDf608e	6.07348703	6.59E-05	0.01470045	14255	Flt3	3.93307654	0.00039181	0.03343625					
105844	Card10	-2.6295919	6.85E-05	0.0147293	68052	Rps13	1.52797482	0.00039619	0.03343625					
16449	Jag1	-2.2705059	6.91E-05	0.0147293	76486	Ly6k	2.43981225	0.00039855	0.03343625					
26888	Clec4a2	7.36981245	6.95E-05	0.0147293	56318	Acpp	-1.7027226	0.00039856	0.03343625					
11828	Aqp3	-1.9149296	7.31E-05	0.0150935	233115	Dpy1913	-1.8132615	0.00039868	0.03343625					
72310	Nkg7	1.49537211	7.35E-05	0.0150935	244234	5830411N06	-1.8919018	0.00040359	0.03343625					
227737	Fam129b	-2.4930972	7.68E-05	0.01551876	14710	Gngt2	1.59211673	0.00040515	0.03343625					
16419	Irgb5	-2.518283	8.26E-05	0.01635881	226691	Ifi207	4.14276731	0.00040587	0.03343625					
240407	Mmp25	-2.021048	8.35E-05	0.01635881	14934	Gypa	4.47460481	0.00042532	0.03481664					
68836	Mrip152	1.71245827	8.63E-05	0.0165606	27762	Vwa7	-3.8726915	0.00044147	0.03564666					
677296	Fcrl6	2.52556764	9.08E-05	0.01714184	100217422	Snomr13	2.4390167	0.00044415	0.03564666					
76089	Ragef2	-2.4179422	9.26E-05	0.01714184	70081	Zfp995	-2.0314871	0.0004466	0.03564666					
14999	H2-DMb1	2.6663498	9.30E-05	0.01714184	11798	Xiap	-1.8115982	0.0004494	0.03564666					
235627	Nbeal2	-2.2397522	9.41E-05	0.01714184	240753	Plekha6	-3.2662489	0.00044954	0.03564666					
13590	Lefty1	3.91201824	9.83E-05	0.01766426	66475	Rps23	1.53622924	0.00045199	0.03564666					
15978	Irfng	1.54412634	0.00010009	0.01773421	218850	Fam208a	-1.7662213	0.000470						