

Supplementary Online Content

Tokez S, Hollestein L, Louwman M, Nijsten T, Wakkee M. Incidence of multiple vs first cutaneous squamous cell carcinoma on a nationwide scale and estimation of future incidences of cutaneous squamous cell carcinoma. *JAMA Dermatol*. Published online October 28, 2020. doi:10.1001/jamadermatol.2020.3677

eTable 1. Numbers and European Standardized Rates of First cSCC Stratified by Body Site and Stage in Males and Females

eTable 2. Incidence Rates (per 100,000 Person-Years) of cSCC in the Netherlands in Males and Females From 1989 to 2017, Age-Standardized to the European Standard Population 2013 (European Standardized Rate [ESR 2013]), US Standard Population 2000 (United States Standardized Rate [USSR]), European Standard Population 1976 (European Standardized Rate [ESR 1976]), World Standard Population 1968 (World Standardized Rate [WSR]) and World (WHO 2000-2025) Standard Population (World Standardized Rate [WSR 2000-2025])

eFigure 1. Three Year Moving ESR Averages for cSCC per Body Site in Males (A) and Females (B)

eFigure 2. Body Site Specific Distribution of First cSCCs (A) and Subsequent cSCCs (B)

This supplementary material has been provided by the authors to give readers additional information about their work.

eTable 1. Numbers and European Standardized Rates of First cSCC Stratified by Body Site and Stage in Males and Females

	Males									Females								
				ESR									ESR					
	N	1989-1993	1994-1998	1999-2003	2004-2008	2009-2013	2014-2015	2016	2017	N	1989-1993	1994-1998	1999-2003	2004-2008	2009-2013	2014-2015	2016	2017
<i>Overall</i>	84,572	40.1	43.7	45.8	58.0	75.1	79.6	97.1	107.6	61,046	14.5	17.3	19.9	27.6	39.7	44.1	59.7	68.7
<i>Body site</i>																		
Lips	2580	2.1	1.8	1.4	1.5	1.6	1.6	2.1	1.6	1728	0.5	0.6	0.6	0.7	1.1	1.2	1.8	1.5
Eyelid	898	0.7	0.6	0.7	0.7	0.6	0.5	0.6	0.6	857	0.3	0.2	0.4	0.4	0.5	0.5	0.7	0.6
Ear	14,941	9.9	10.3	9.9	11.2	13.6	13.1	14.1	10.9	1077	0.4	0.4	0.4	0.5	0.6	0.7	1.0	0.7
Face	30,473	14.1	15.9	17.2	21.2	27.5	28.5	34.2	33.0	27,357	7.6	8.9	9.8	13.0	17.7	19.0	23.6	21.7
Scalp/neck	14,889	5.2	6.4	7.5	11.1	15.1	18.2	18.9	25.4	3269	0.7	0.8	0.9	1.3	1.9	2.4	3.6	5.9
Trunk	4814	1.1	1.5	1.9	2.8	4.1	4.4	6.5	6.7	5636	0.8	1.2	1.4	2.4	4.0	4.7	7.0	7.7
Arms	10,982	5.6	5.8	5.4	7.0	9.0	9.4	13.0	13.9	10,998	2.6	3.0	3.5	5.0	7.3	7.8	10.7	13.0
Legs	3458	1.0	1.1	1.4	1.9	3.1	3.4	4.9	5.7	8938	1.3	2.0	2.7	4.0	6.3	7.5	9.7	10.6
Unknown	1537	0.4	0.3	0.5	0.8	0.5	0.6	2.7	9.9	1186	0.2	0.2	0.2	0.2	0.2	0.3	1.7	6.9
<i>Stage</i>																		
I	56,450	26.3	28.8	32.1	45.4	62.7	68.0	14.8	2.1	40,821	9.4	11.7	14.5	22.7	34.3	39.1	8.8	1.4
II	5892	3.8	3.9	4.4	5.7	6.4	6.8	1.6	0.4	3446	1.3	1.2	1.6	2.0	2.3	2.6	0.7	0.1
III	986	0.7	0.8	0.7	0.7	0.8	1.2	0.6	0.1	490	0.2	0.2	0.3	0.2	0.2	0.5	0.2	0.1
IV	158	0.0	0.1	0.1	0.0	0.2	0.5	0.1	0.1	104	0.0	0.0	0.0	0.0	0.1	0.1	0.1	0.0
Unknown	21,086	9.3	10.1	8.6	6.2	5.1	3.1	80.0	104.9	16,185	3.5	4.0	3.5	2.7	2.8	1.8	50.0	67.2

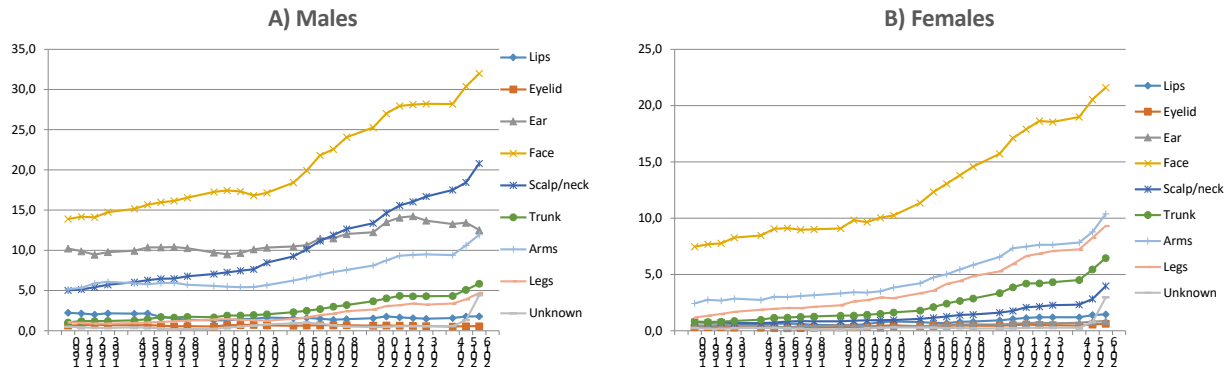
Abbreviations: cSCC, cutaneous squamous cell carcinoma; ESR, European Standardized Rate per 100,000 person-years; N, number of cases.

eTable 2. Incidence Rates (per 100,000 Person-Years) of cSCC in the Netherlands in Males and Females From 1989 to 2017, Age-Standardized to the European Standard Population 2013 (European Standardized Rate [ESR 2013]), US Standard Population 2000 (United States Standardized Rate [USSR]), European Standard Population 1976 (European Standardized Rate [ESR 1976]), World Standard Population 1968 (World Standardized Rate [WSR]) and World (WHO 2000-2025) Standard Population (World Standardized Rate [WSR 2000-2025])

Year of diagnosis	Gender	ESR 2013	USSR	ESR 1976	WSR 1968	WSR 2000-2025
1989	Male	40.0	26.5	22.3	14.1	16.9
1990	Male	40.4	26.5	22.2	13.9	16.7
1991	Male	38.6	25.6	21.4	13.4	16.1
1992	Male	40.6	27.1	22.8	14.3	17.2
1993	Male	40.9	27.0	22.4	13.8	16.8
1994	Male	43.1	28.8	24.2	15.1	18.1
1995	Male	43.3	28.5	23.7	14.8	17.9
1996	Male	44.6	30.0	25.0	15.5	18.8
1997	Male	44.4	29.4	24.6	15.3	18.4
1998	Male	43.1	28.5	23.6	14.7	17.8
1999	Male	45.5	30.2	25.0	15.5	18.8
2000	Male	45.4	30.3	24.5	15.0	18.5
2001	Male	45.1	30.1	24.8	15.2	18.6
2002	Male	46.6	30.7	25.0	15.4	18.8
2003	Male	46.6	30.4	24.9	15.3	18.7
2004	Male	50.7	33.8	27.7	17.1	20.9
2005	Male	56.4	37.3	30.2	18.4	22.6
2006	Male	56.8	37.8	30.7	18.9	23.1
2007	Male	63.9	42.1	34.1	20.8	25.6
2008	Male	62.4	41.2	33.2	20.3	25.1
2009	Male	67.2	44.4	35.4	21.4	26.7
2010	Male	74.0	48.3	38.9	23.8	29.3
2011	Male	80.4	52.9	42.6	26.0	32.1
2012	Male	77.4	51.4	41.2	25.0	30.9
2013	Male	76.7	51.0	40.5	24.4	30.5
2014	Male	80.5	53.2	42.1	25.3	31.6
2015	Male	78.8	52.0	41.1	24.6	30.9
2016	Male	97.1	64.2	51.1	30.9	38.5
2017	Male	107.6	71.4	57.2	24.6	43.0
1989	Female	13.9	9.3	7.8	5.0	5.9
1990	Female	13.9	9.3	7.6	4.8	5.8
1991	Female	14.3	9.6	8.1	5.1	6.1
1992	Female	15.5	10.4	8.7	5.5	6.6
1993	Female	14.8	10.0	8.3	5.3	6.3
1994	Female	17.0	11.5	9.6	6.1	7.3
1995	Female	16.7	11.3	9.7	6.2	7.4
1996	Female	18.4	12.4	10.3	6.5	7.8
1997	Female	17.3	11.7	9.9	6.3	7.5
1998	Female	16.9	11.5	9.8	6.3	7.5
1999	Female	18.8	12.8	10.7	6.8	8.1
2000	Female	18.8	12.8	10.8	6.8	8.2
2001	Female	20.5	13.8	11.7	7.4	8.8

2002	Female	19.4	13.1	11.0	7.0	8.3
2003	Female	21.9	14.8	12.5	7.9	9.5
2004	Female	23.1	15.6	13.2	8.3	10.0
2005	Female	25.7	17.3	14.6	9.2	11.0
2006	Female	28.4	19.2	16.3	10.4	12.4
2007	Female	29.1	19.6	16.7	10.6	12.6
2008	Female	31.8	21.4	18.2	11.6	13.7
2009	Female	33.7	22.7	19.4	12.4	14.7
2010	Female	38.2	25.7	22.0	14.0	16.6
2011	Female	43.0	29.1	24.8	15.8	18.8
2012	Female	41.3	27.7	23.6	15.0	17.8
2013	Female	42.1	28.2	23.7	15.0	17.9
2014	Female	43.9	29.5	24.9	15.7	18.8
2015	Female	44.3	29.7	24.9	15.6	18.8
2016	Female	59.7	40.3	33.9	21.3	25.7
2017	Female	68.7	46.4	39.5	25.0	29.9

eFigure 1. Three Year Moving ESR Averages for cSCC per Body Site in Males (A) and Females (B)



eFigure 2. Body Site Specific Distribution of First cSCCs (A) and Subsequent cSCCs (B)

