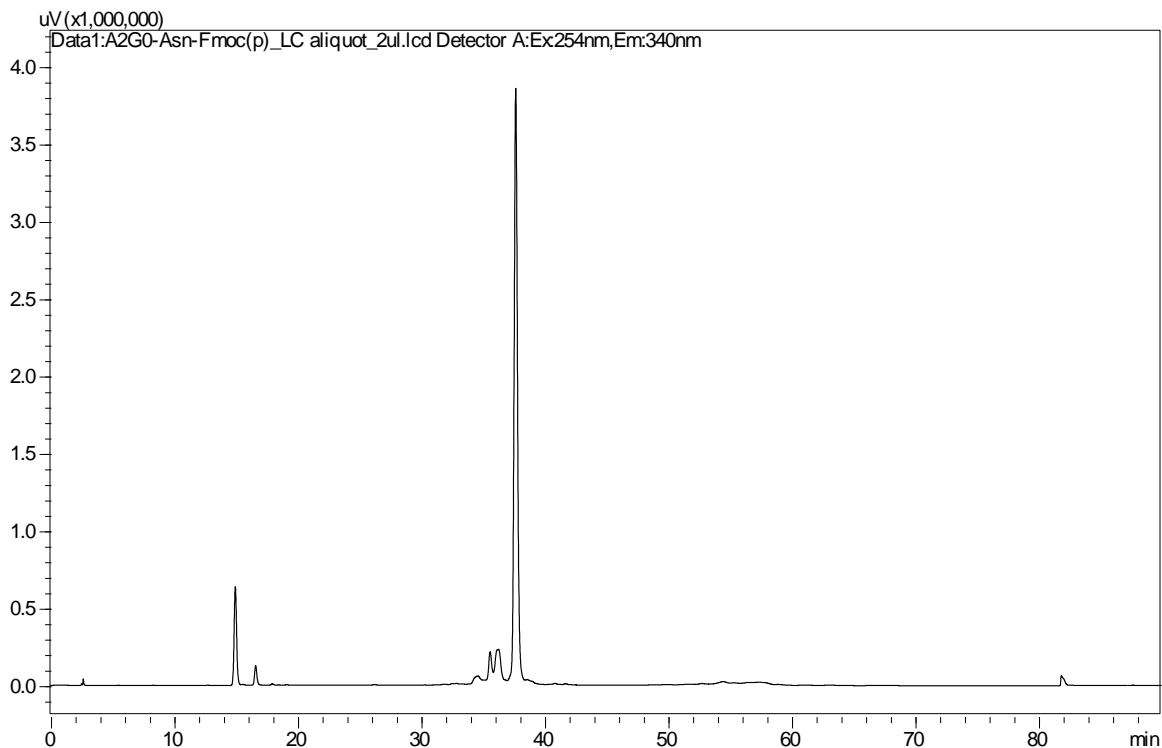
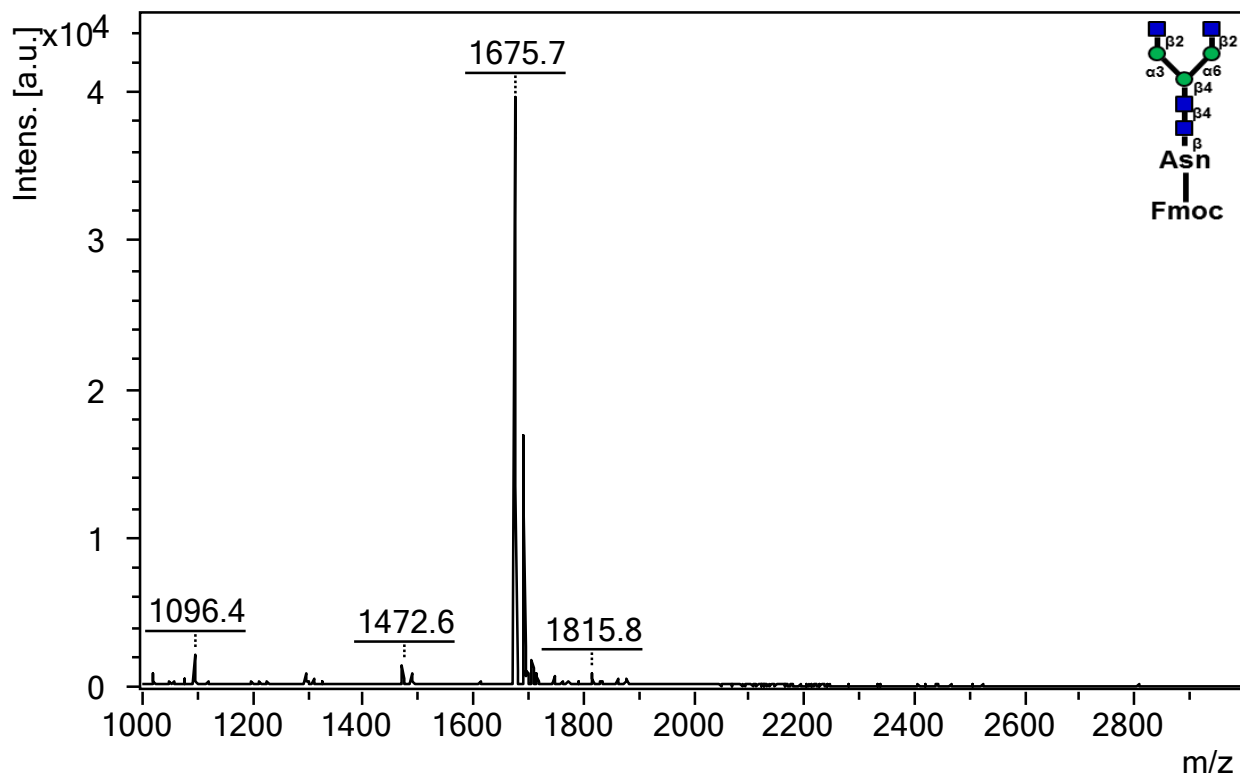
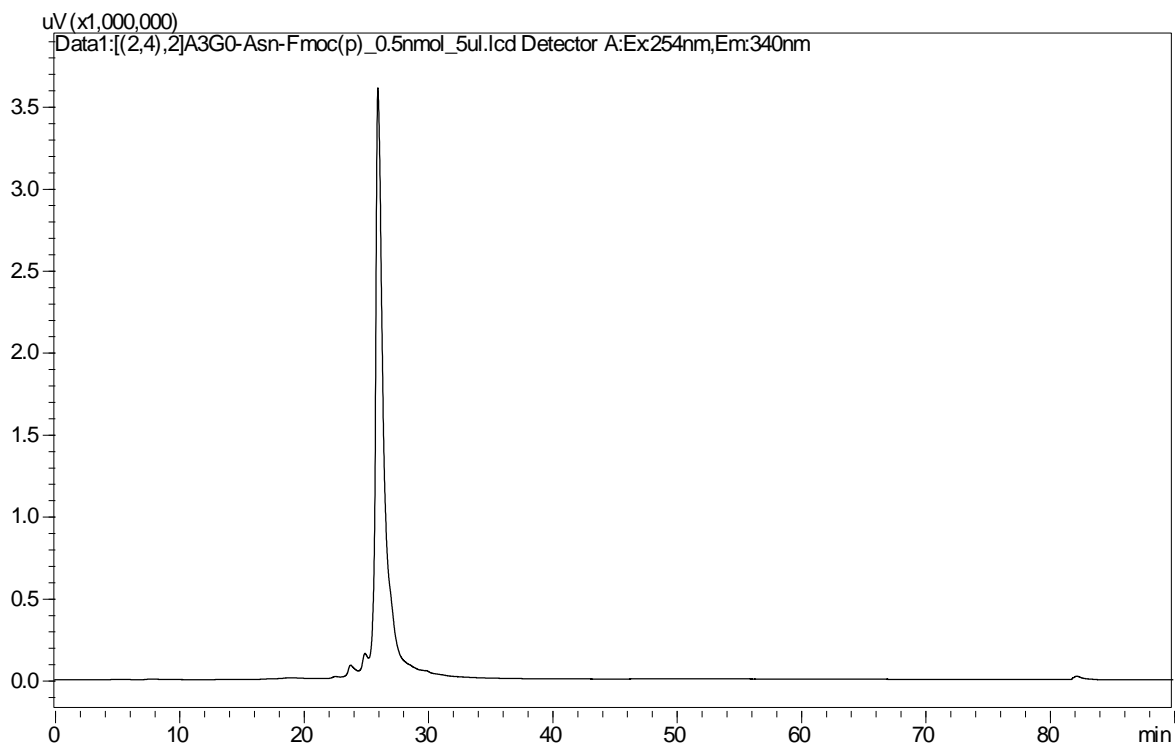
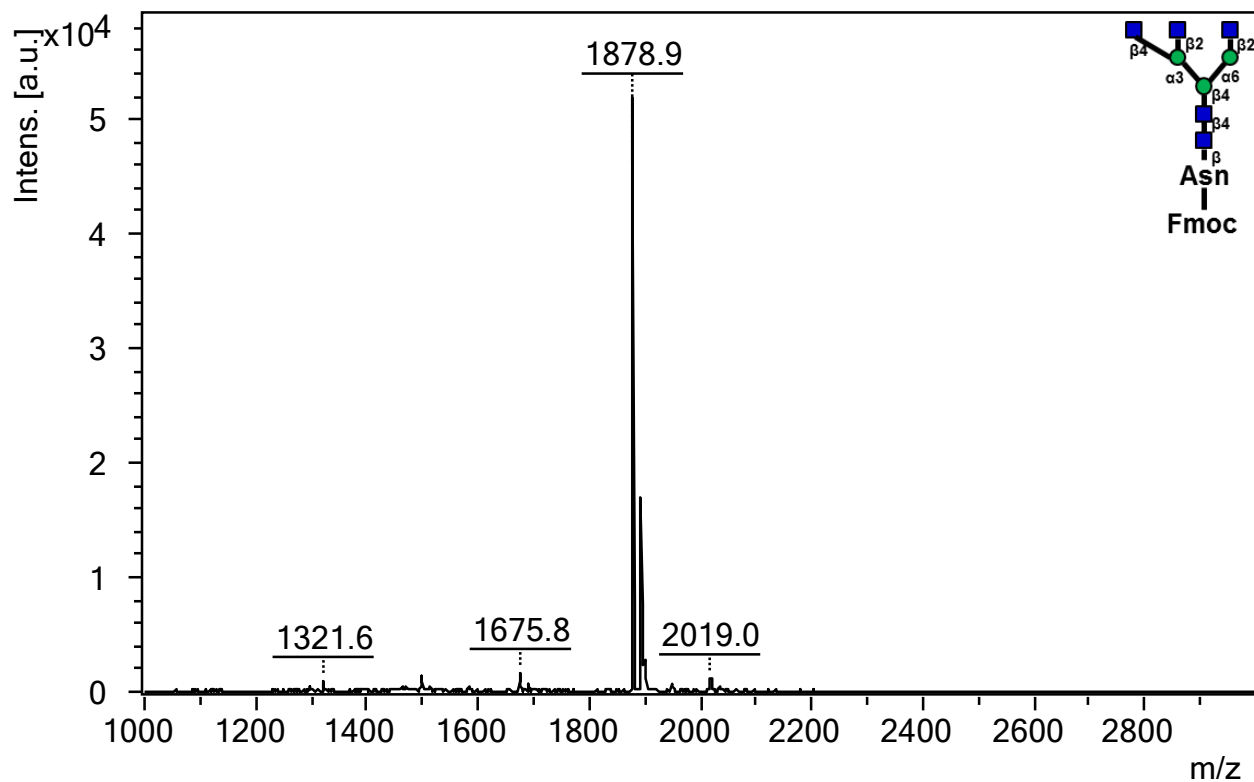


HPLC chromatogram, MALDI-MS and NMR spectra of the products are from below

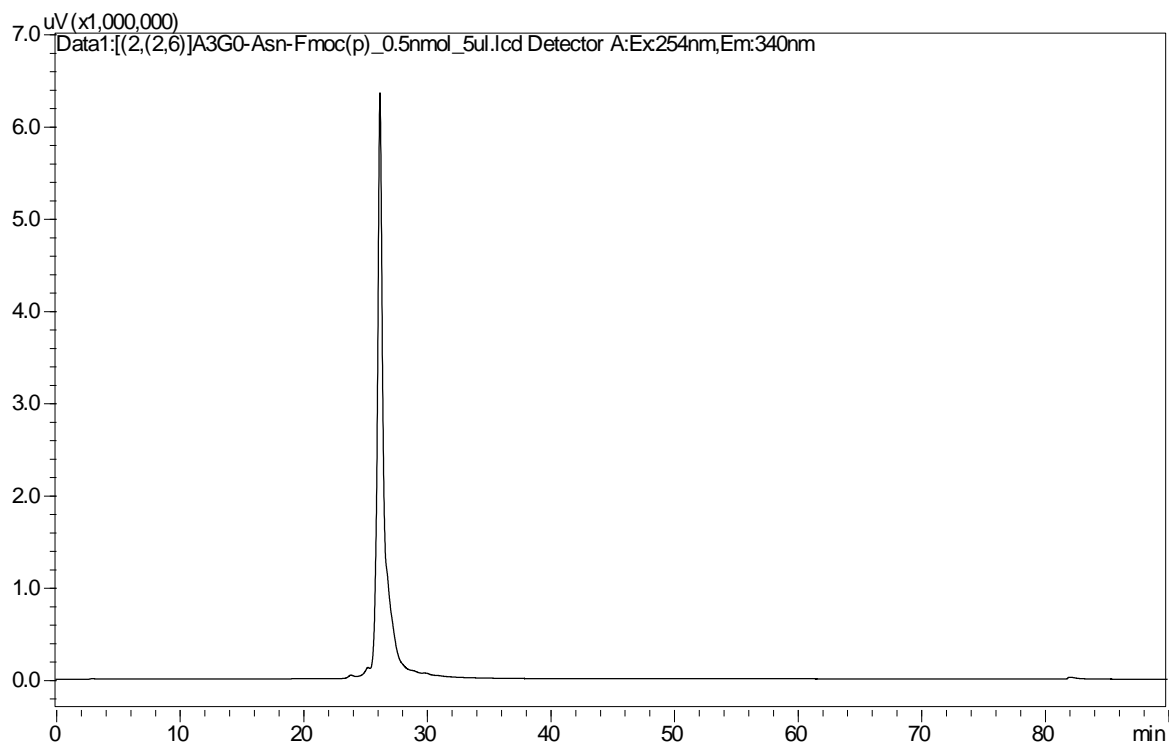
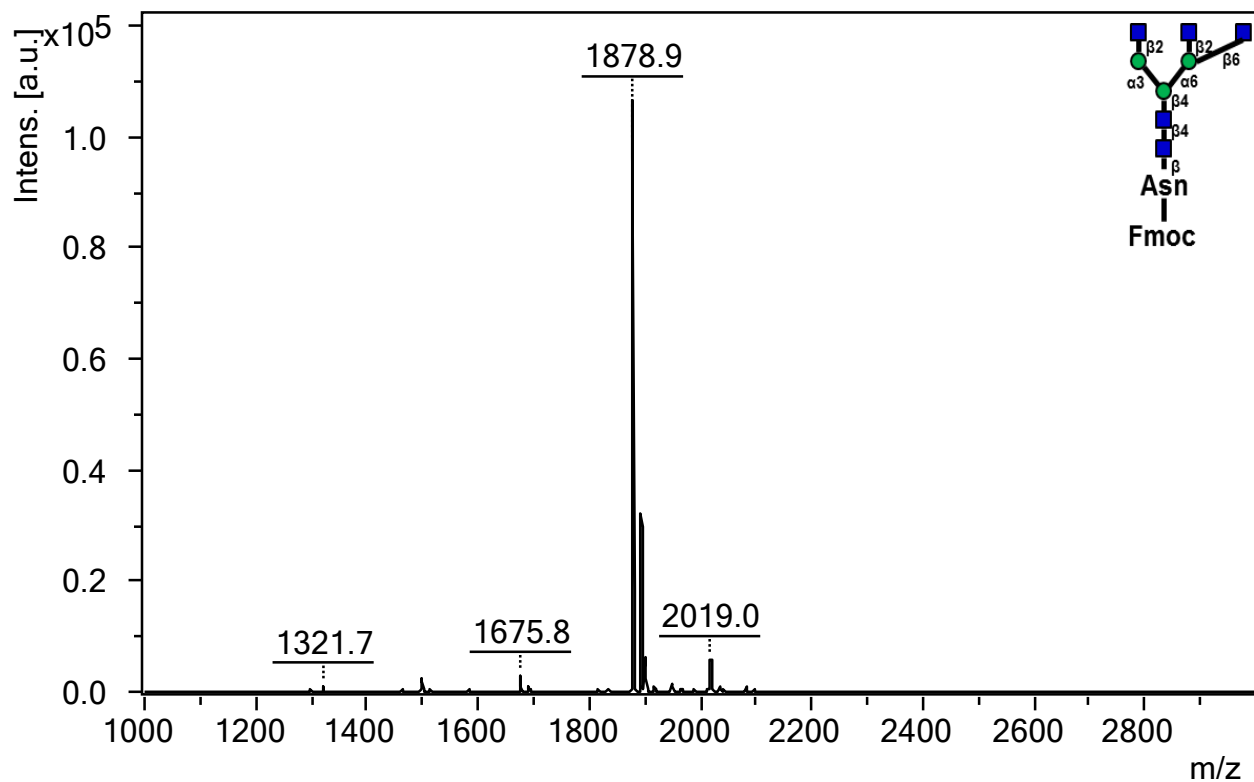
1a. A2G0-Asn-Fmoc



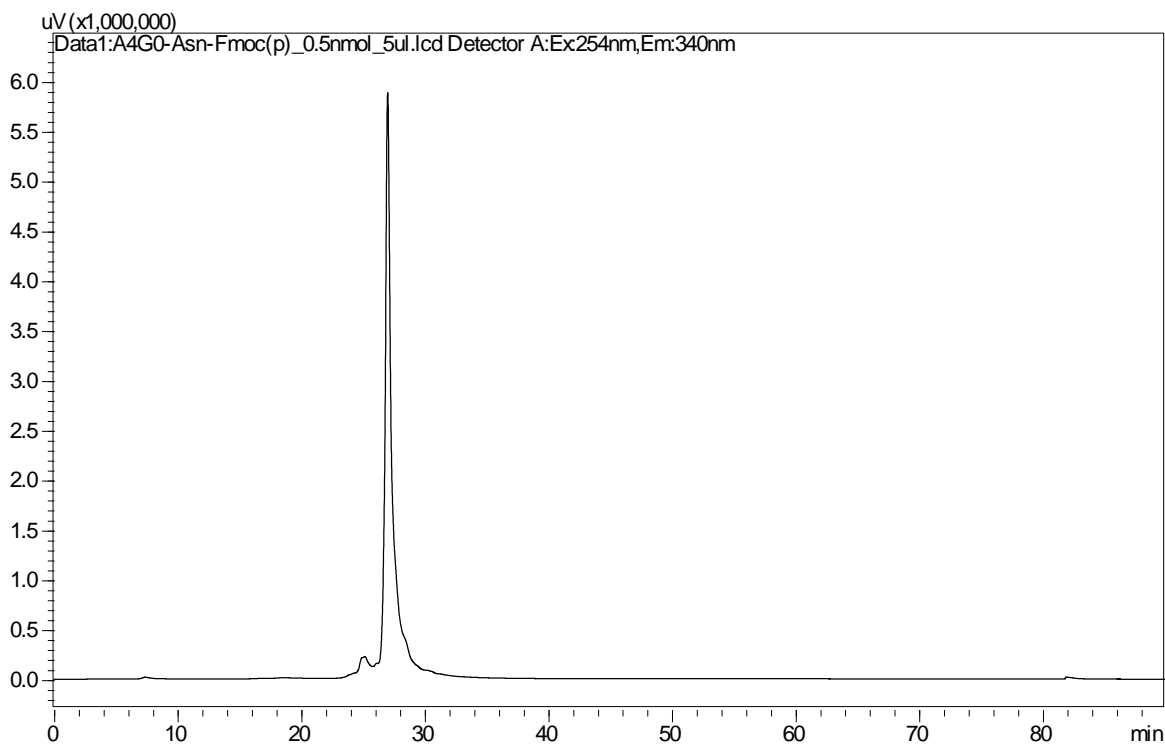
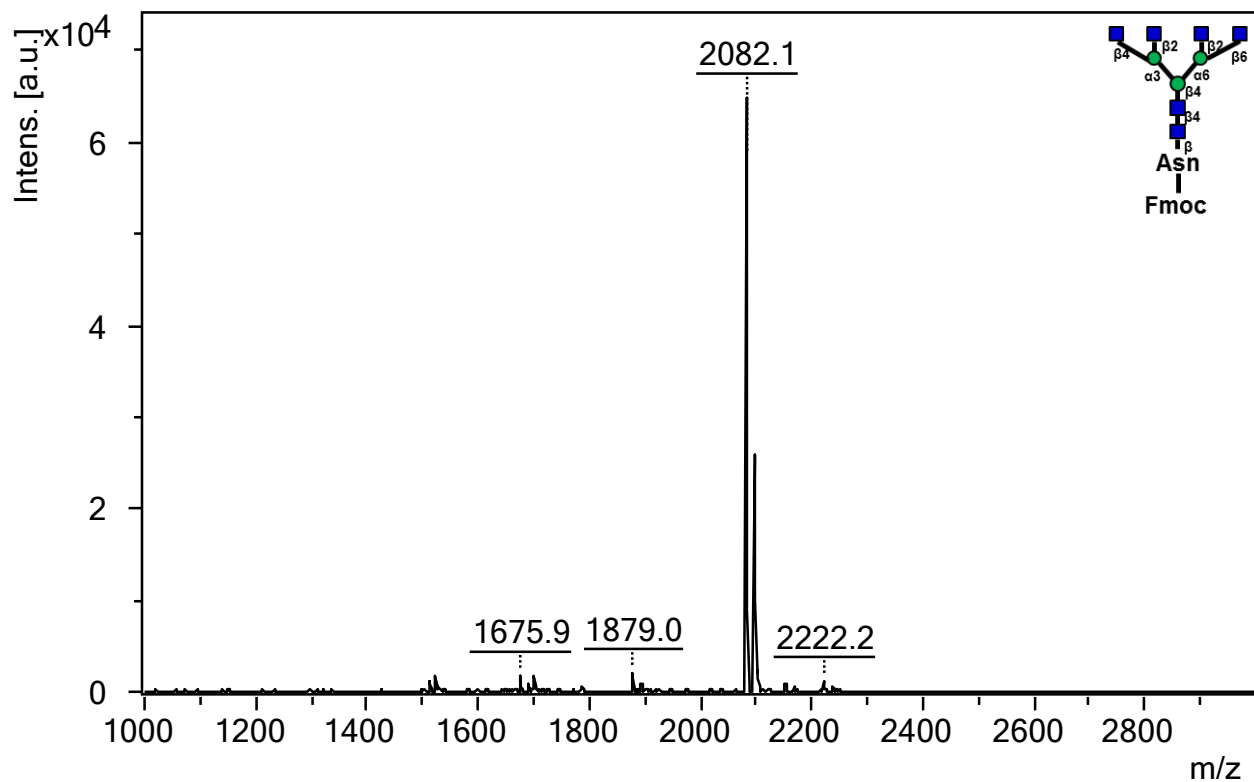
2a. 224A3G0-Asn-Fmoc



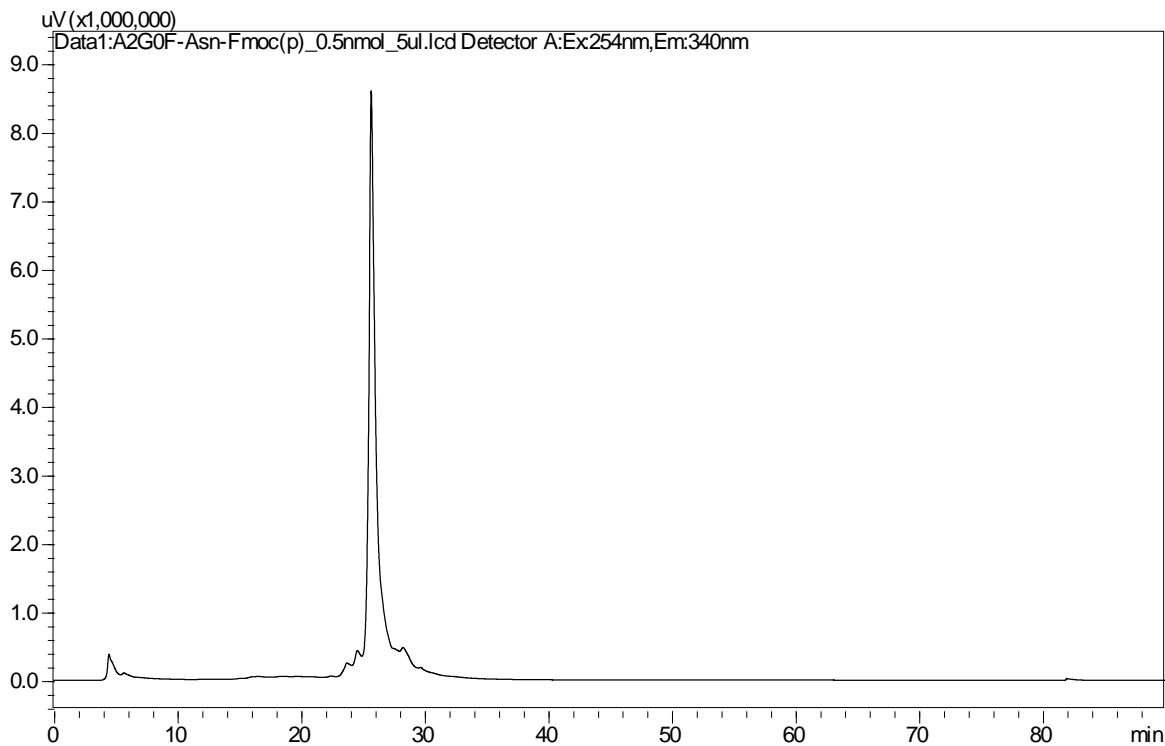
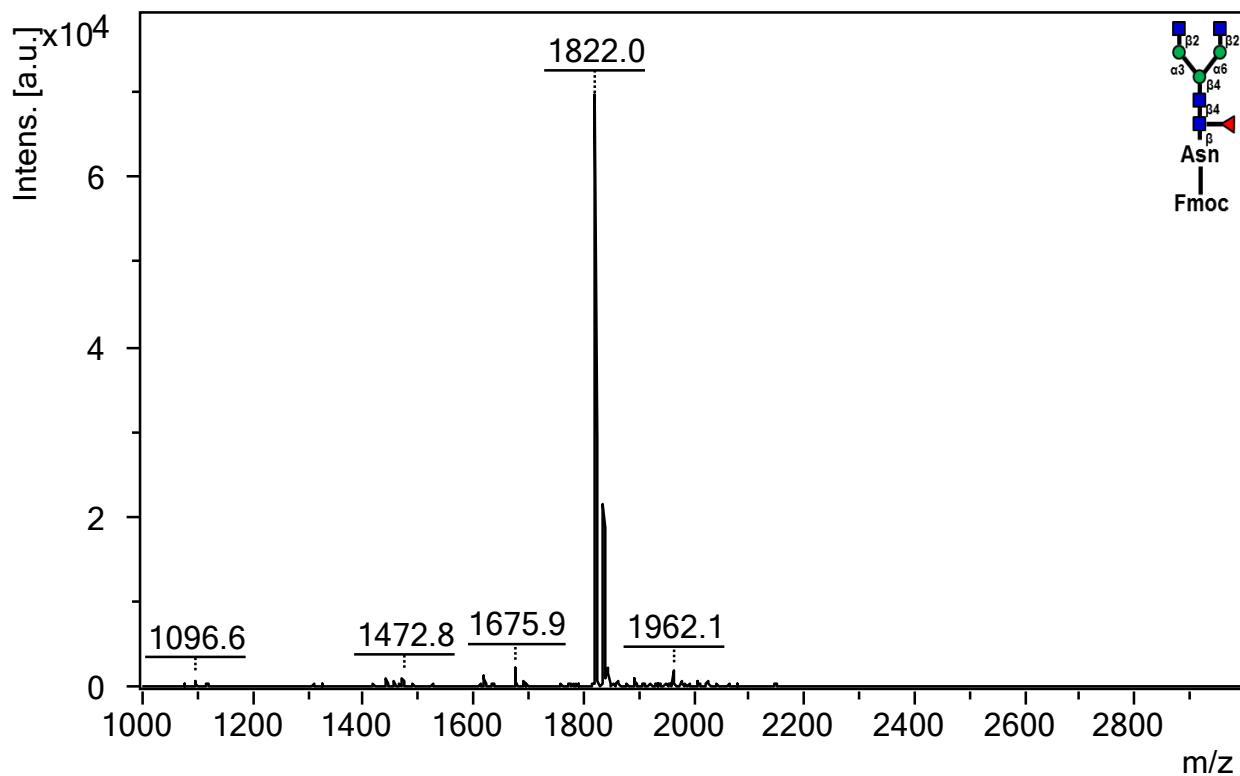
3a. 226A3G0-Asn-Fmoc



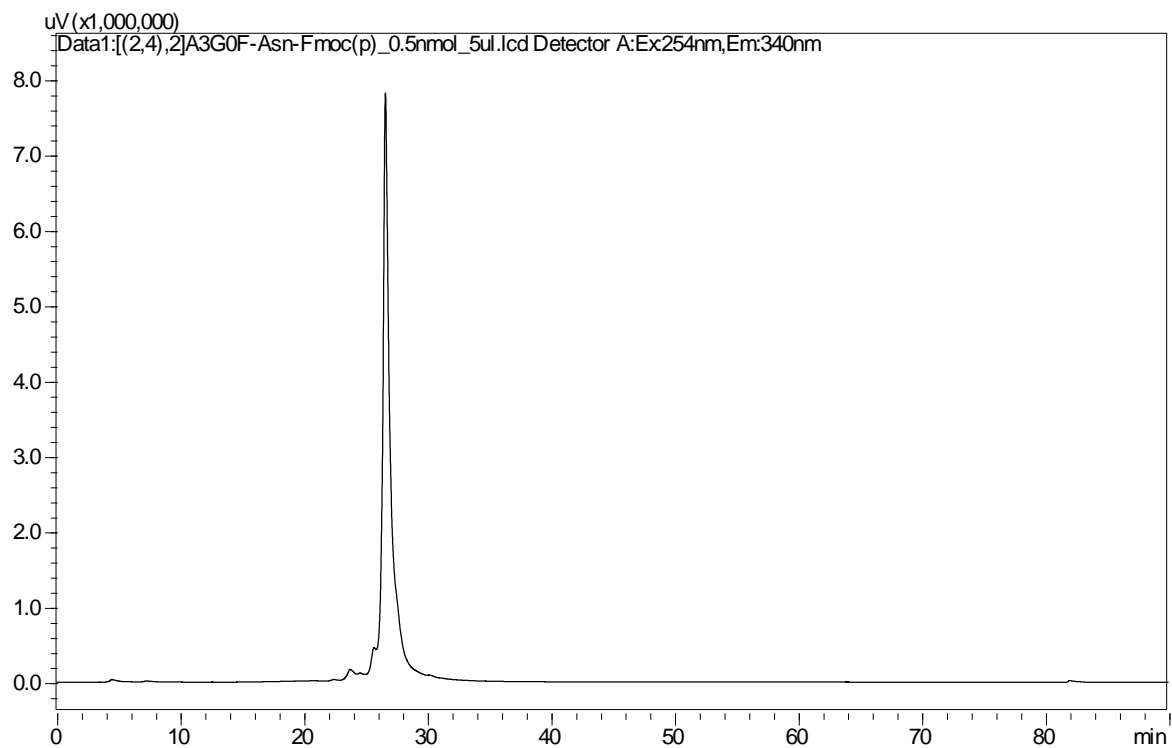
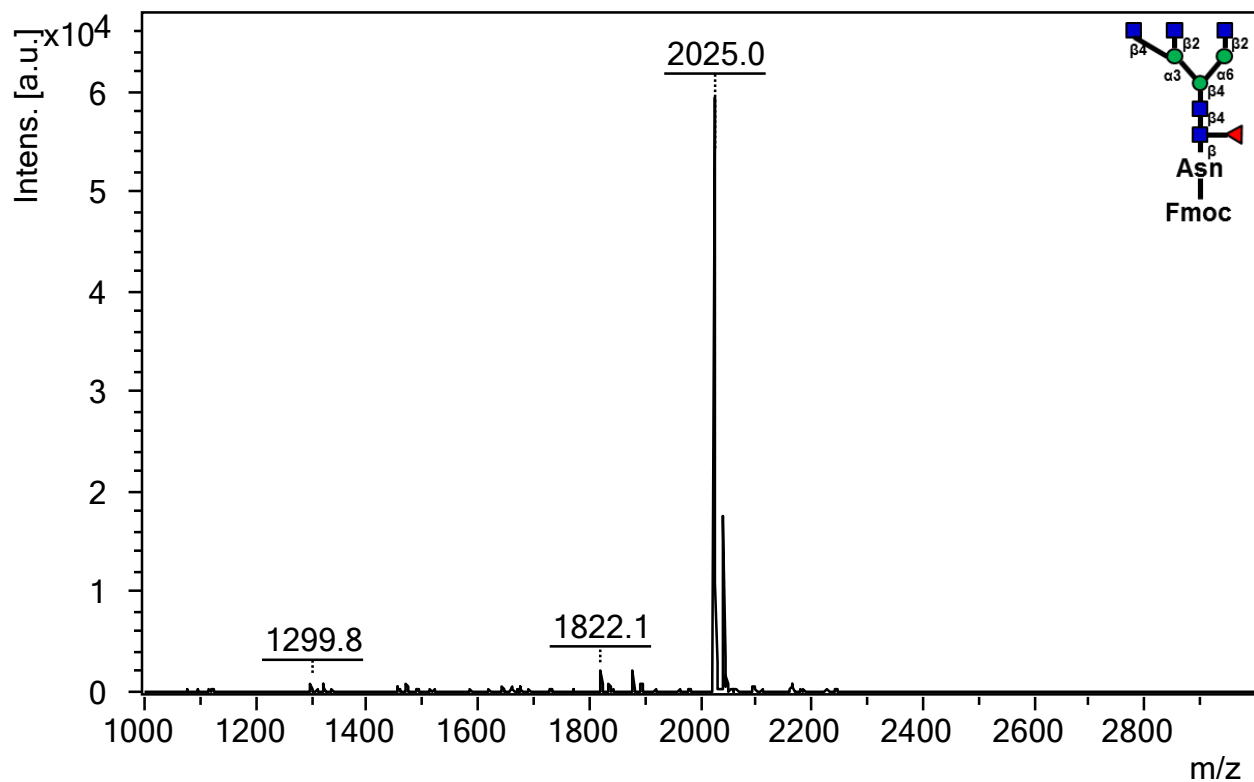
4a. A4G0-Asn-Fmoc



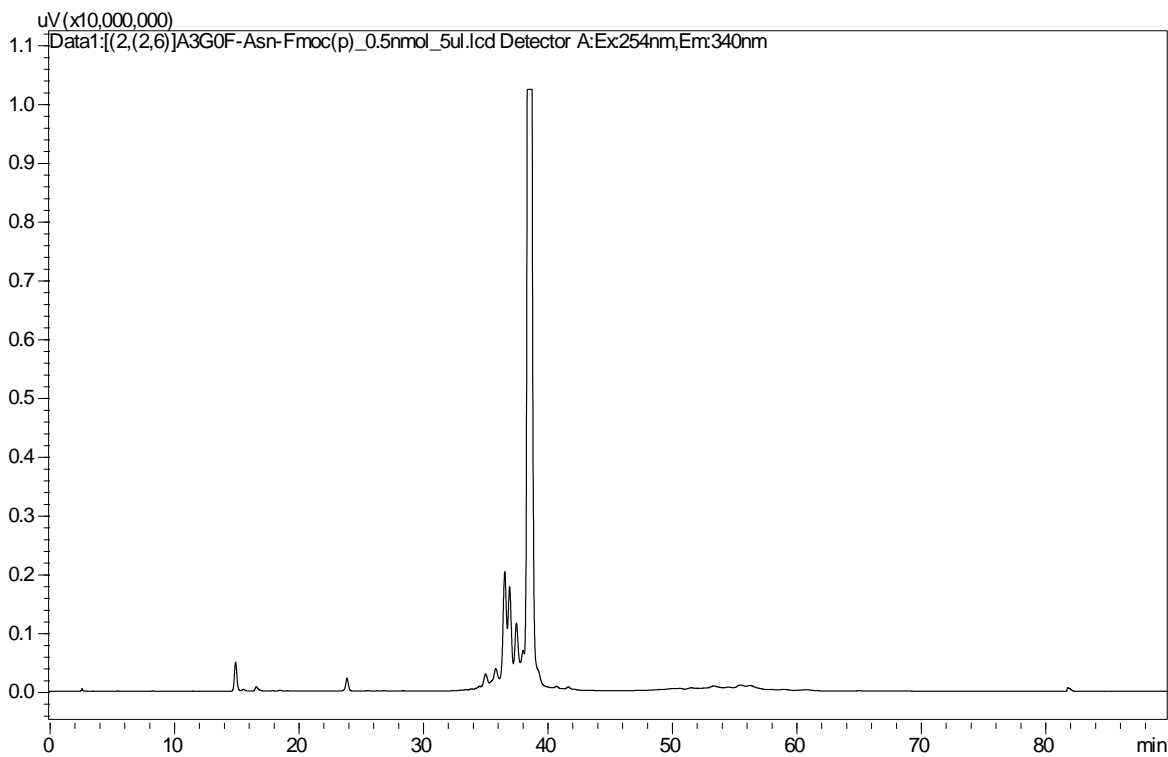
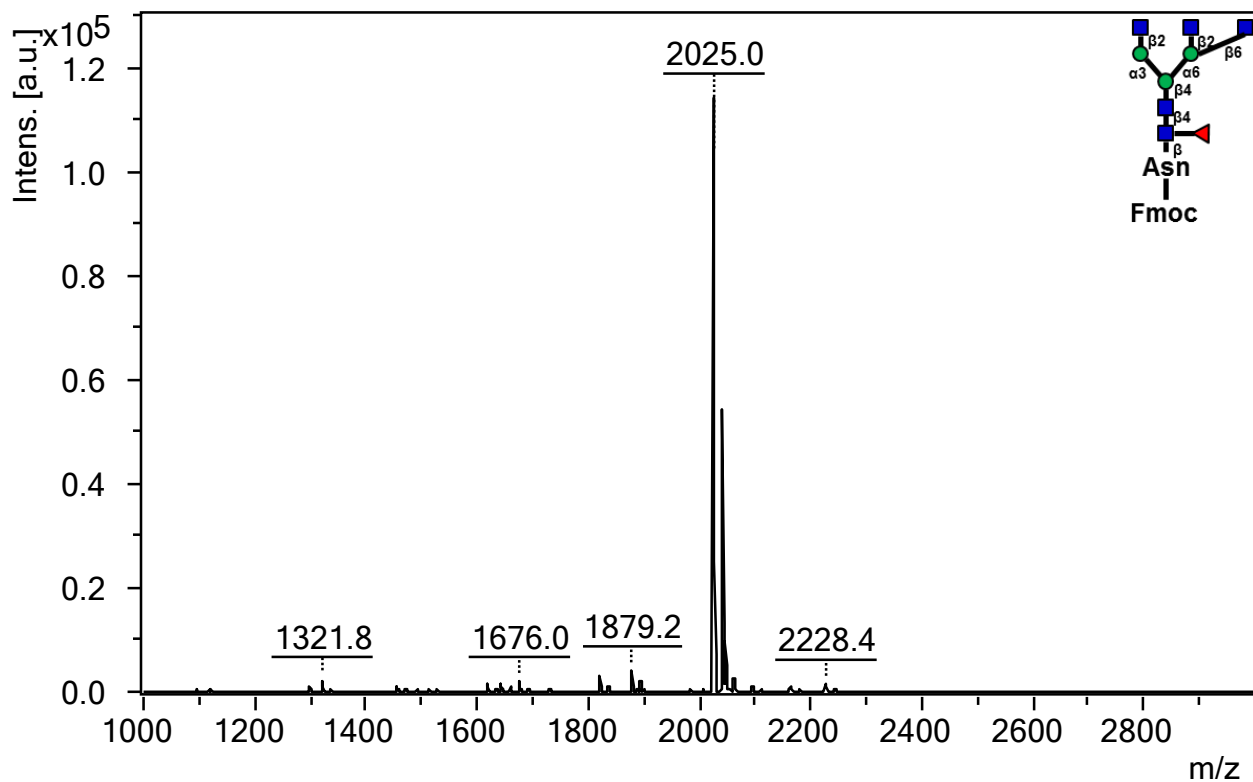
5a. A2G0F-Asn-Fmoc



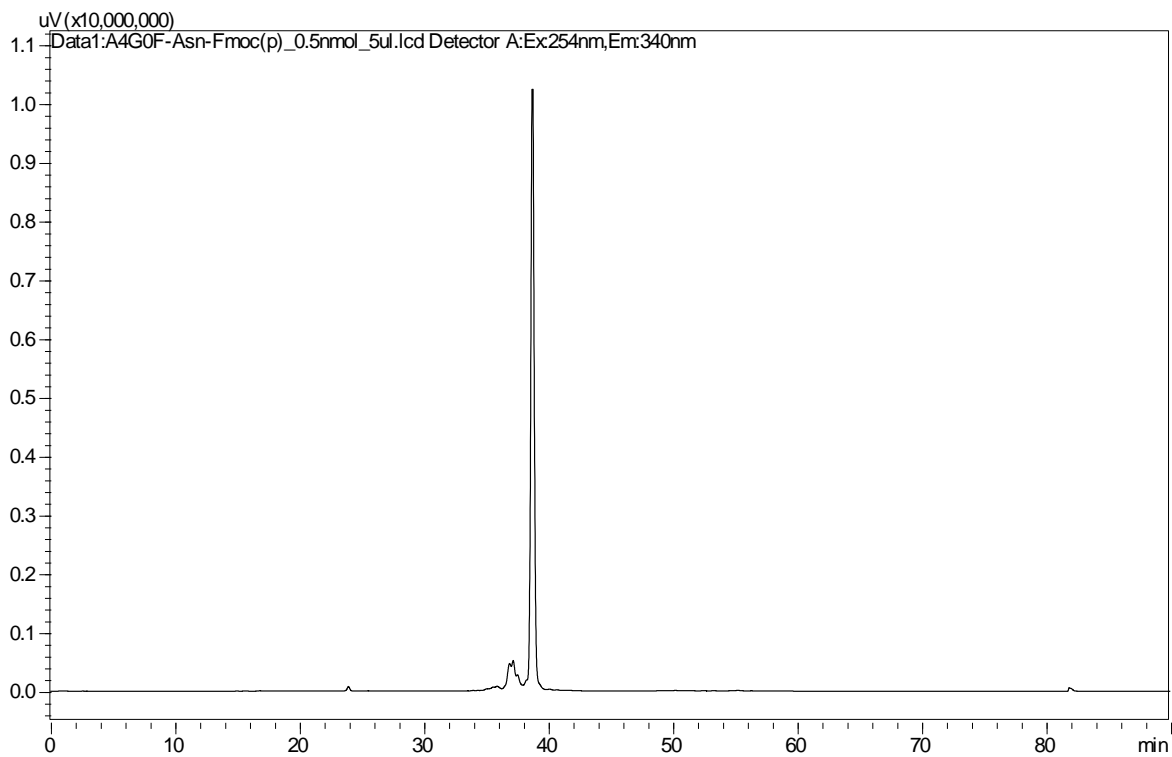
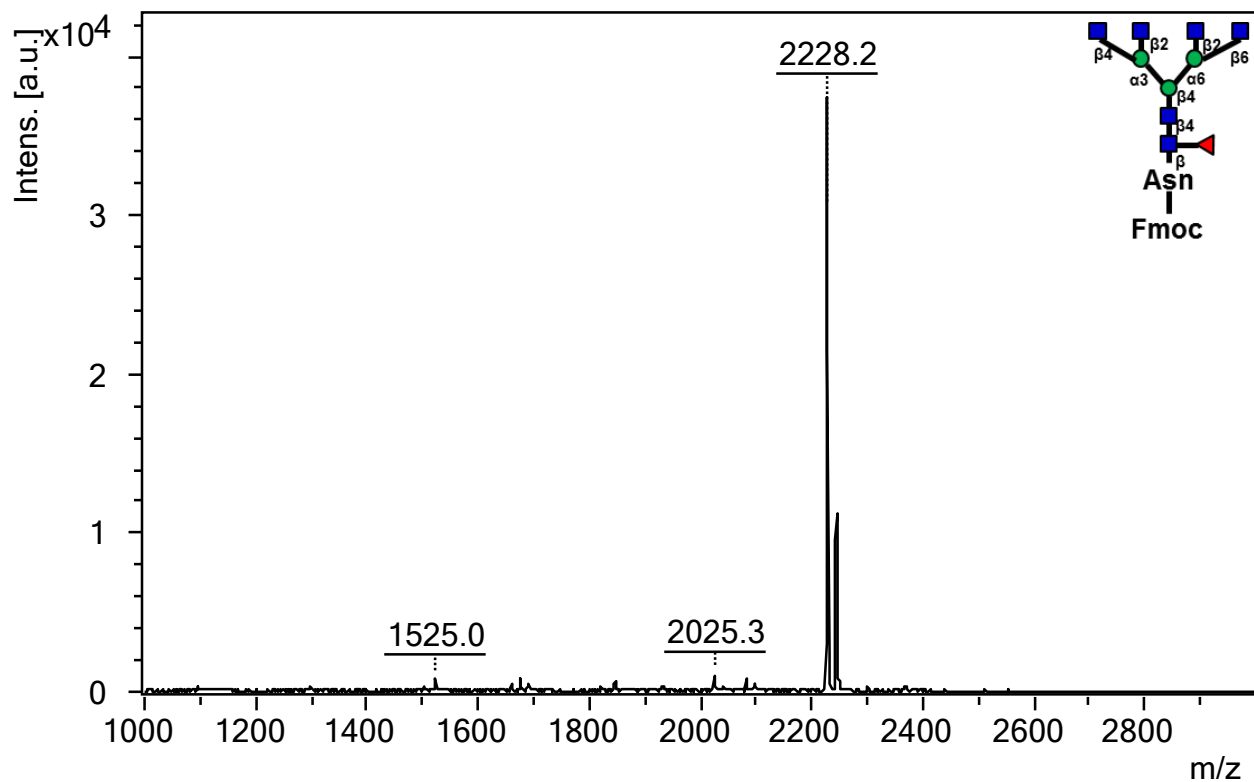
6a. 224A3G0F-Asn-Fmoc



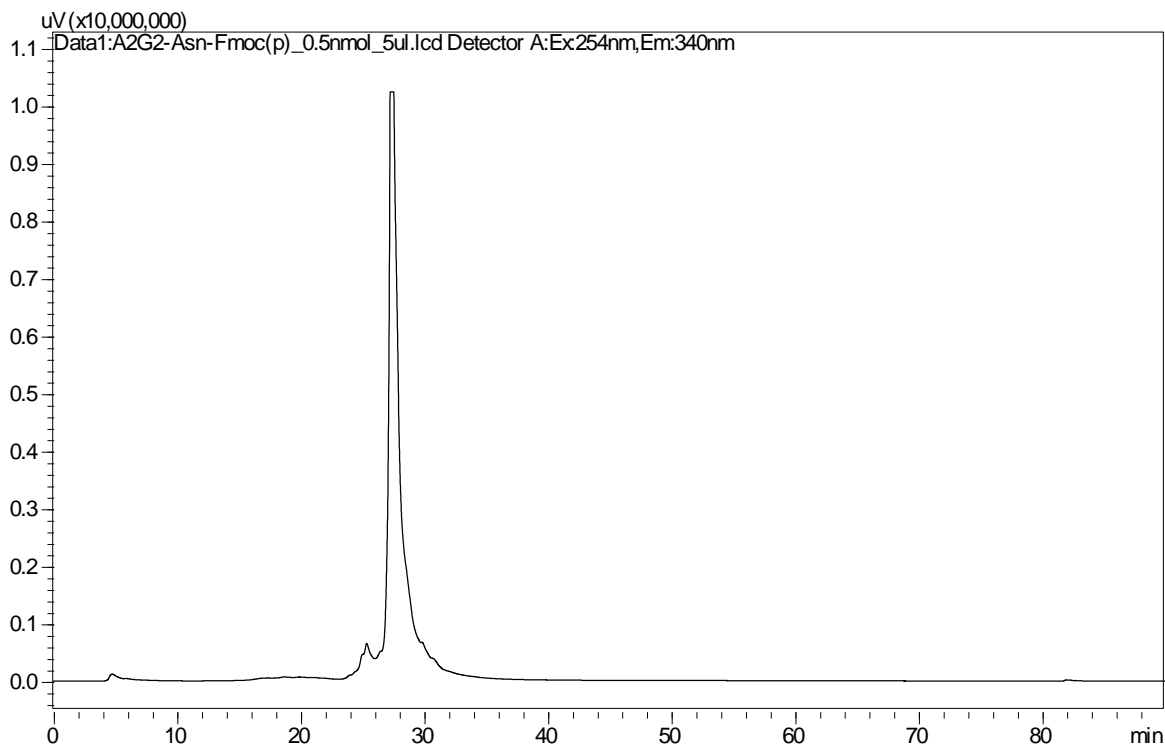
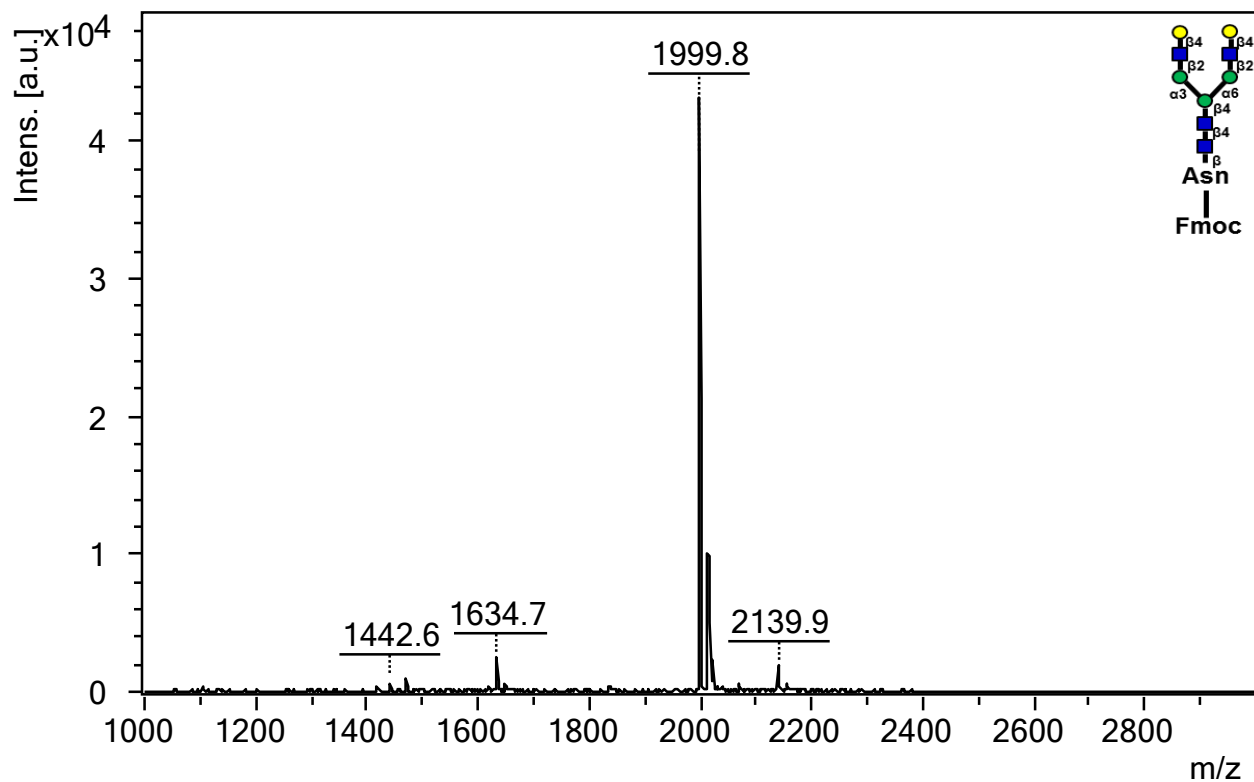
7a. 226A3G0F-Asn-Fmoc



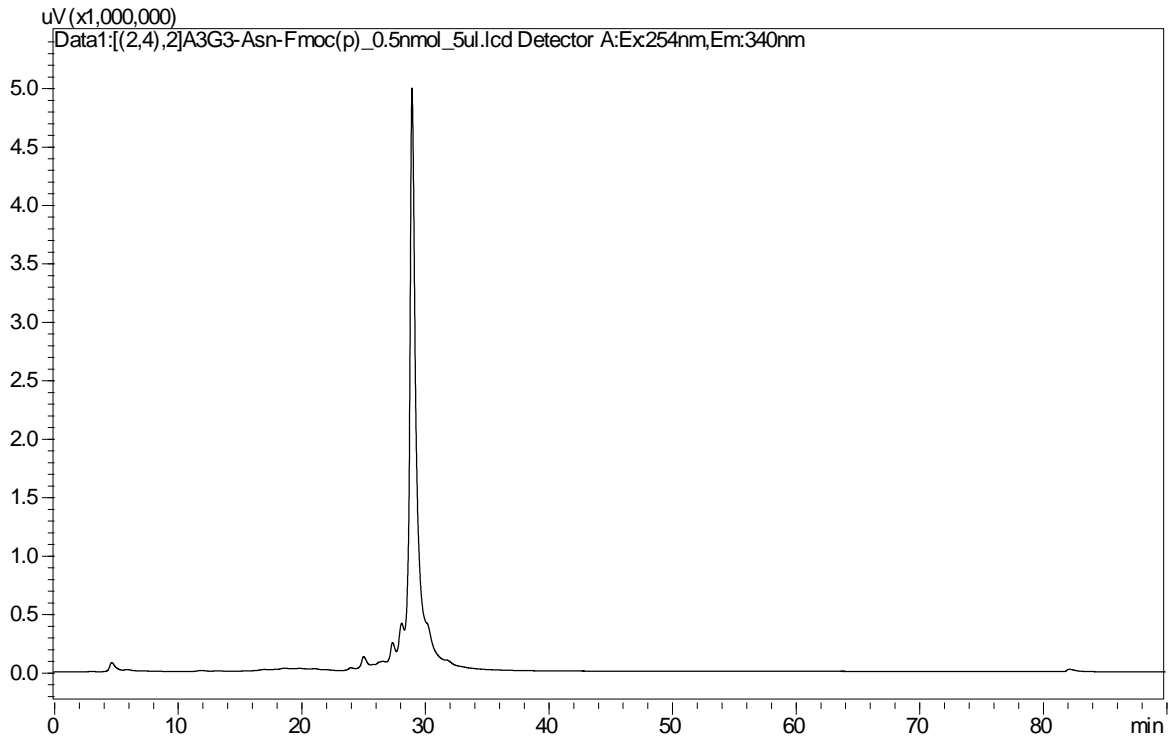
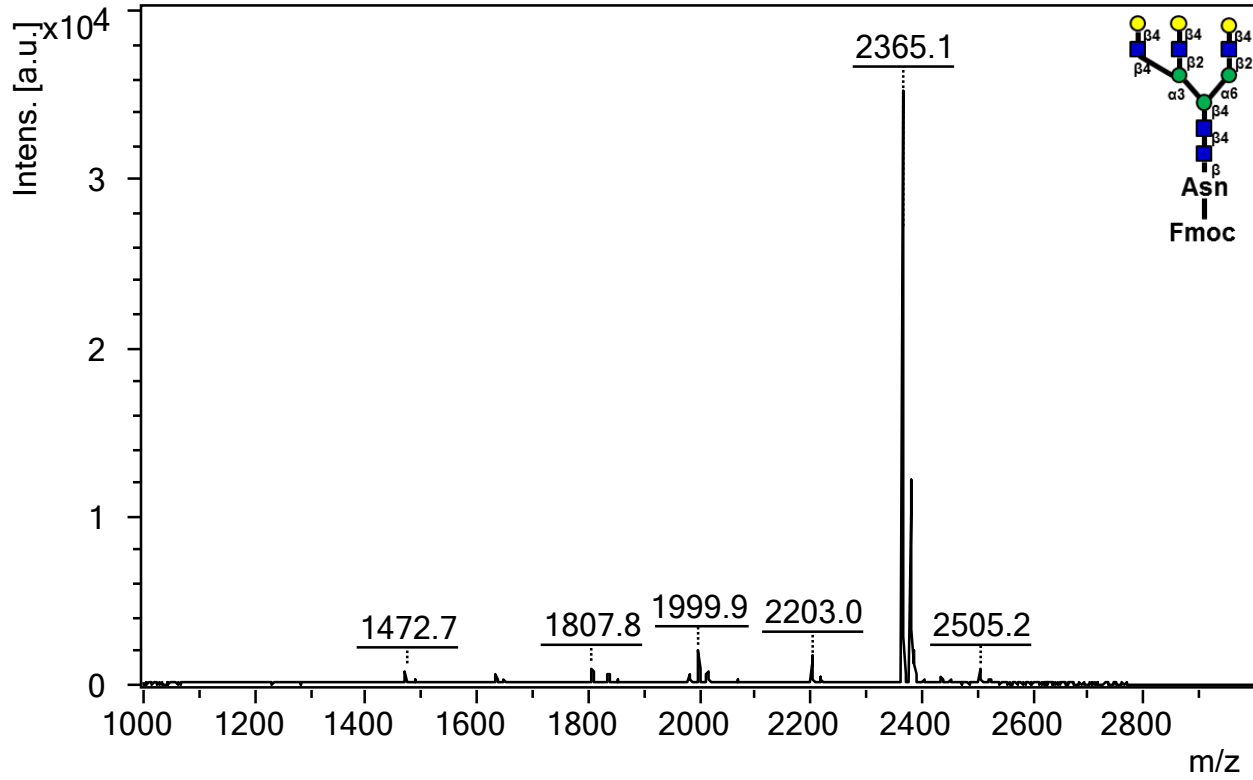
8a. A4G0F-Asn-Fmoc



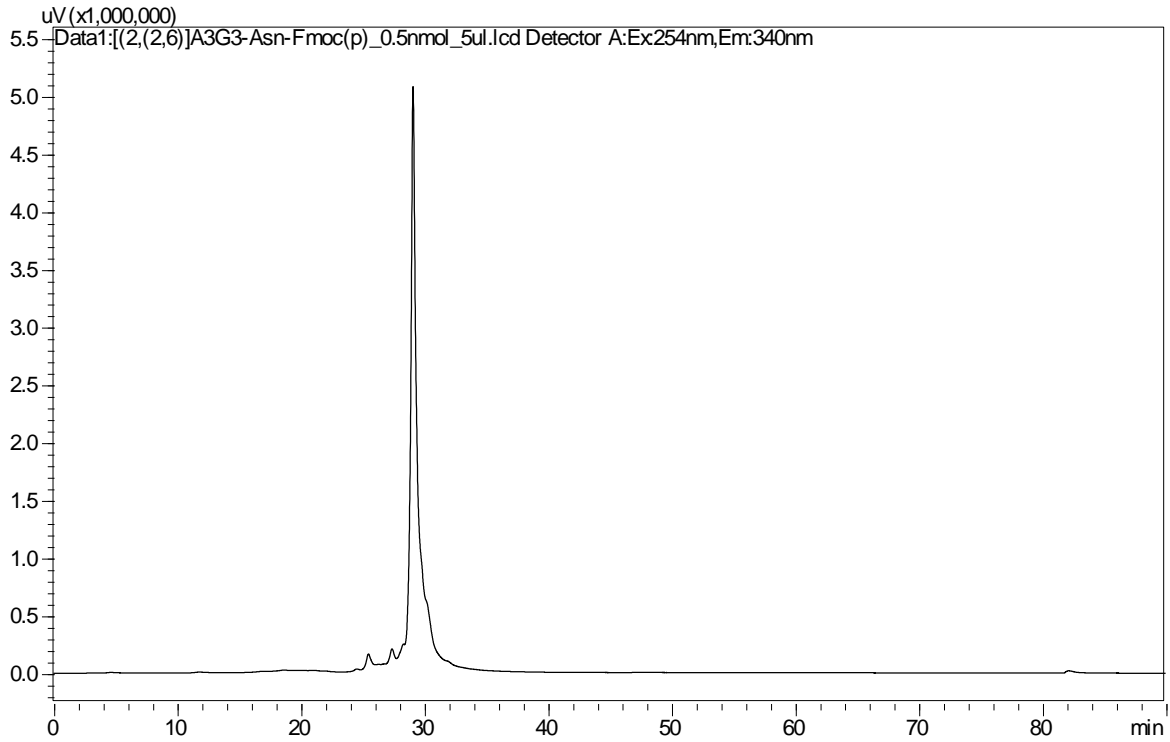
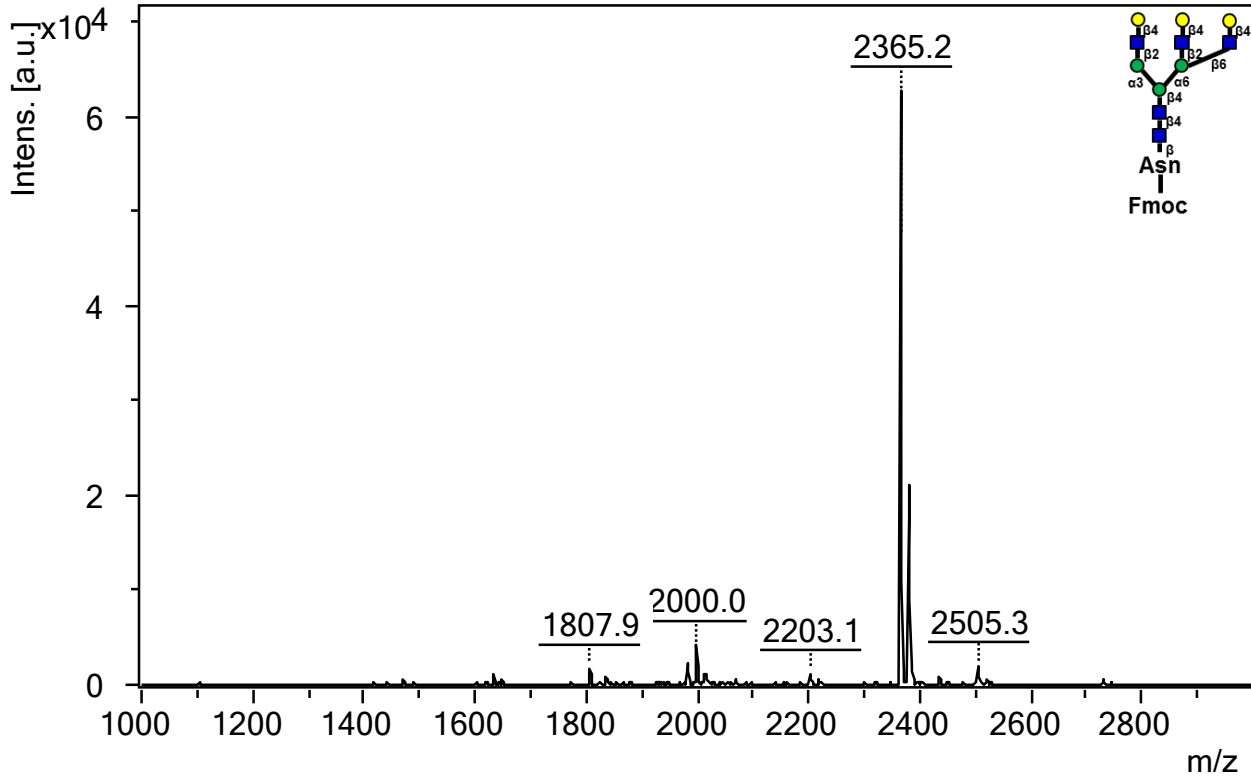
9a. A2G2-Asn-Fmoc



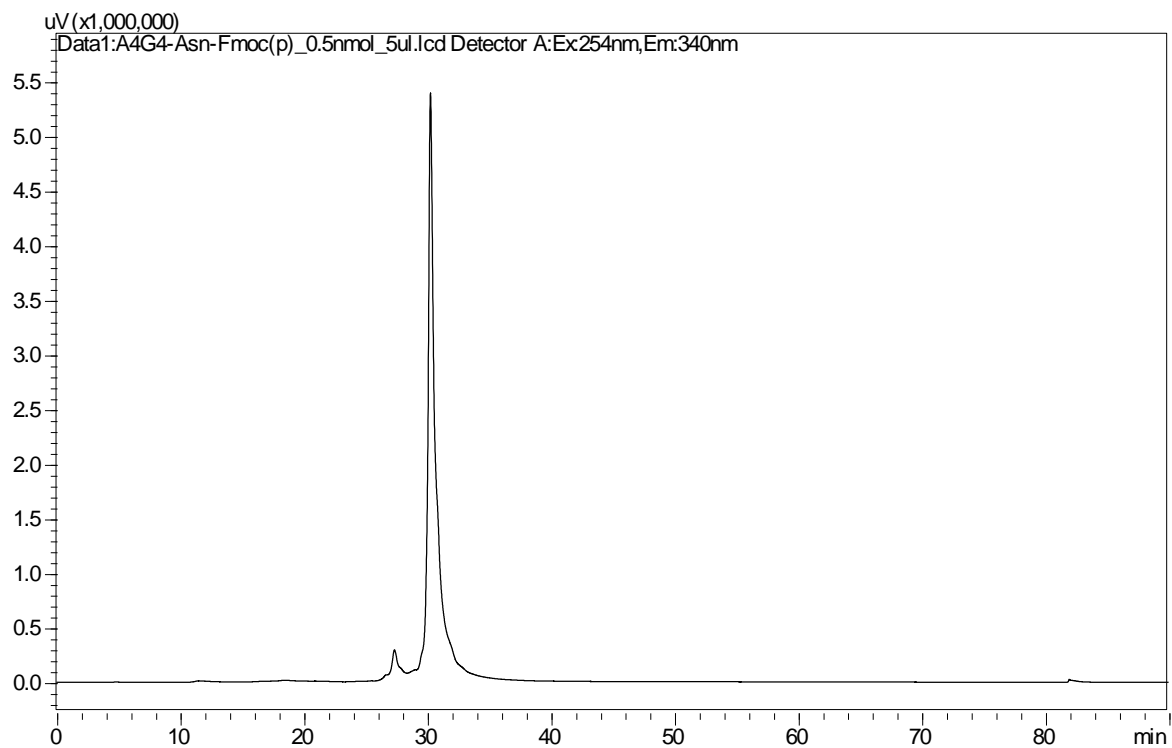
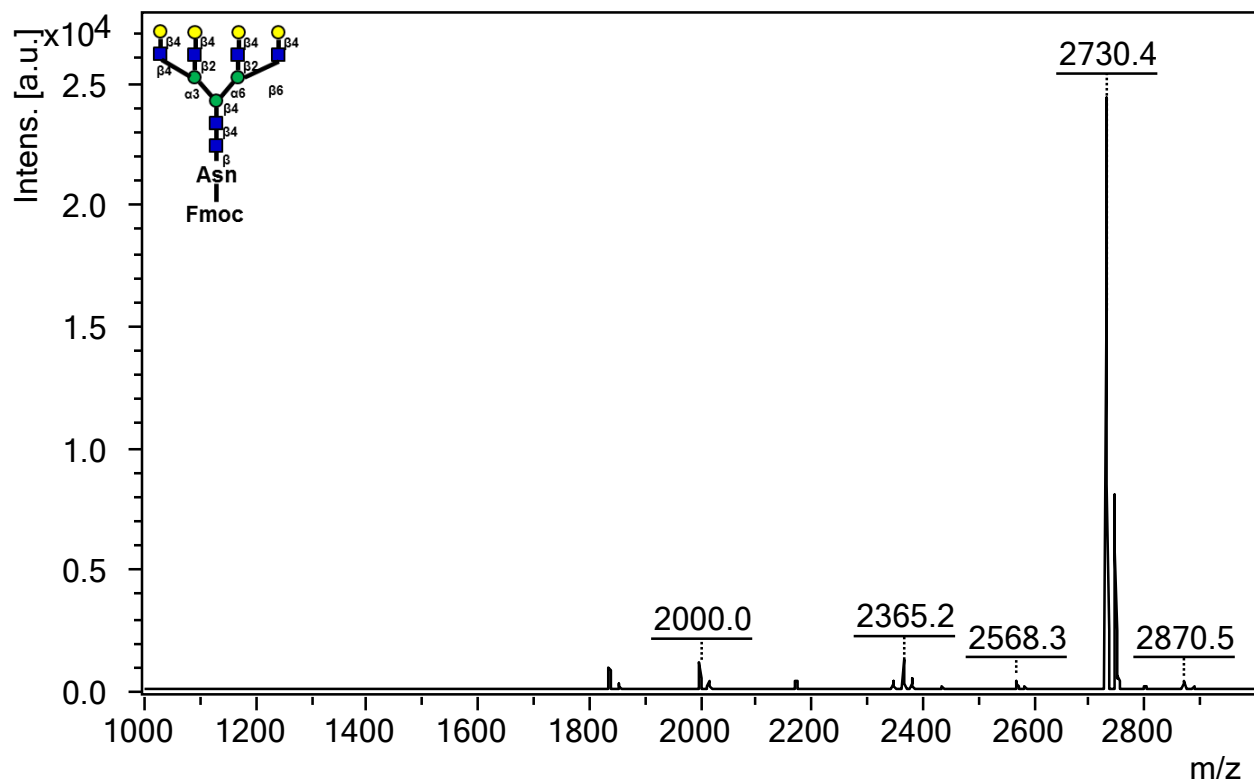
10a. 224A3G3-Asn-Fmoc



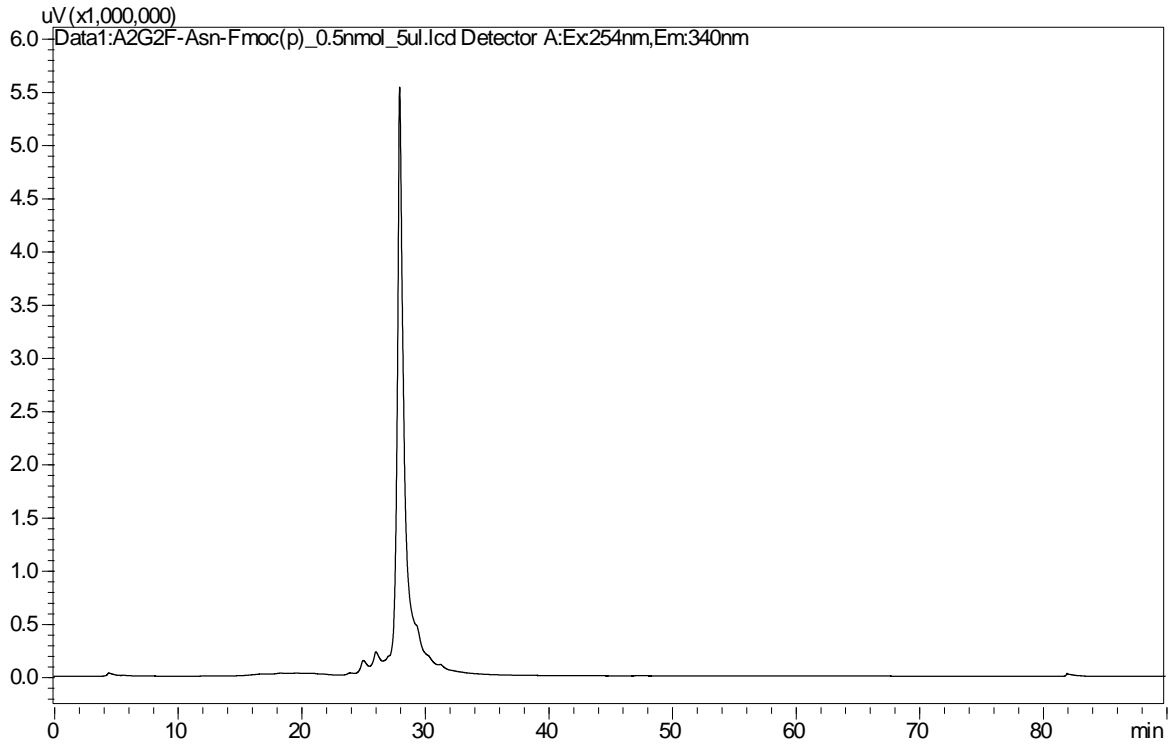
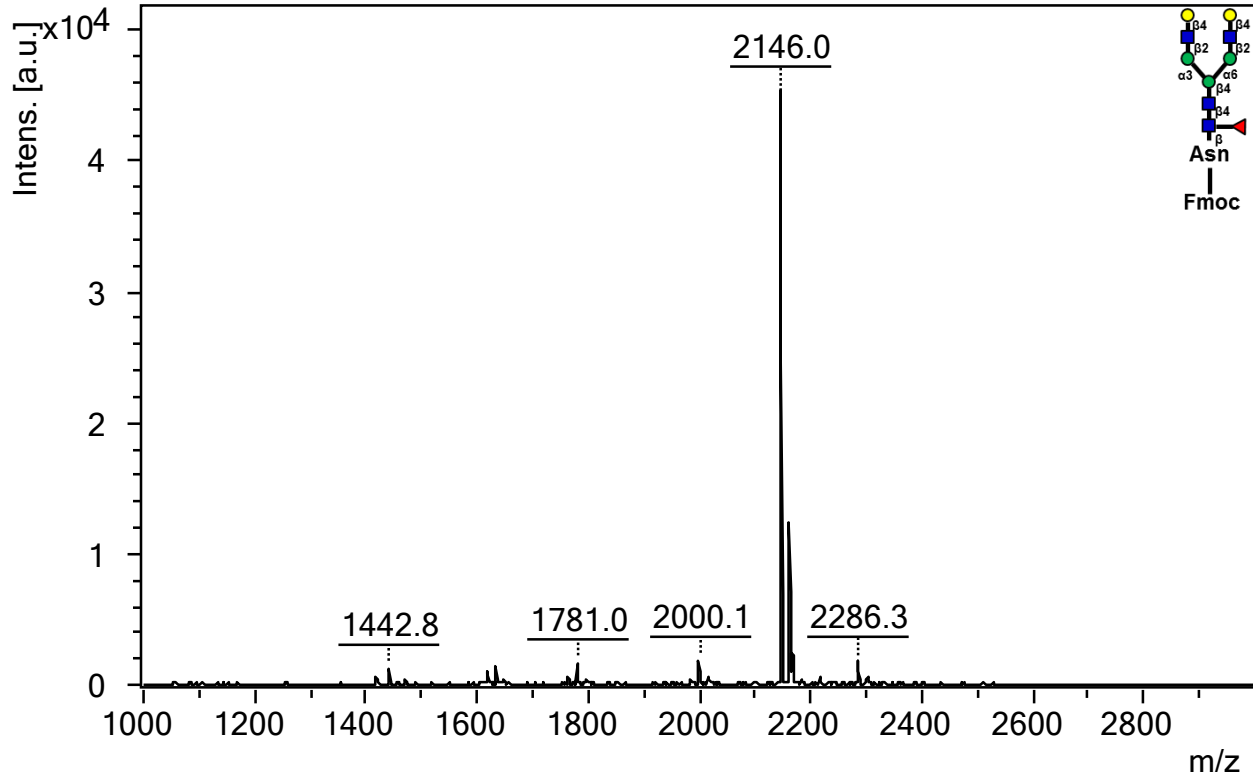
11a. 226A3G3-Asn-Fmoc



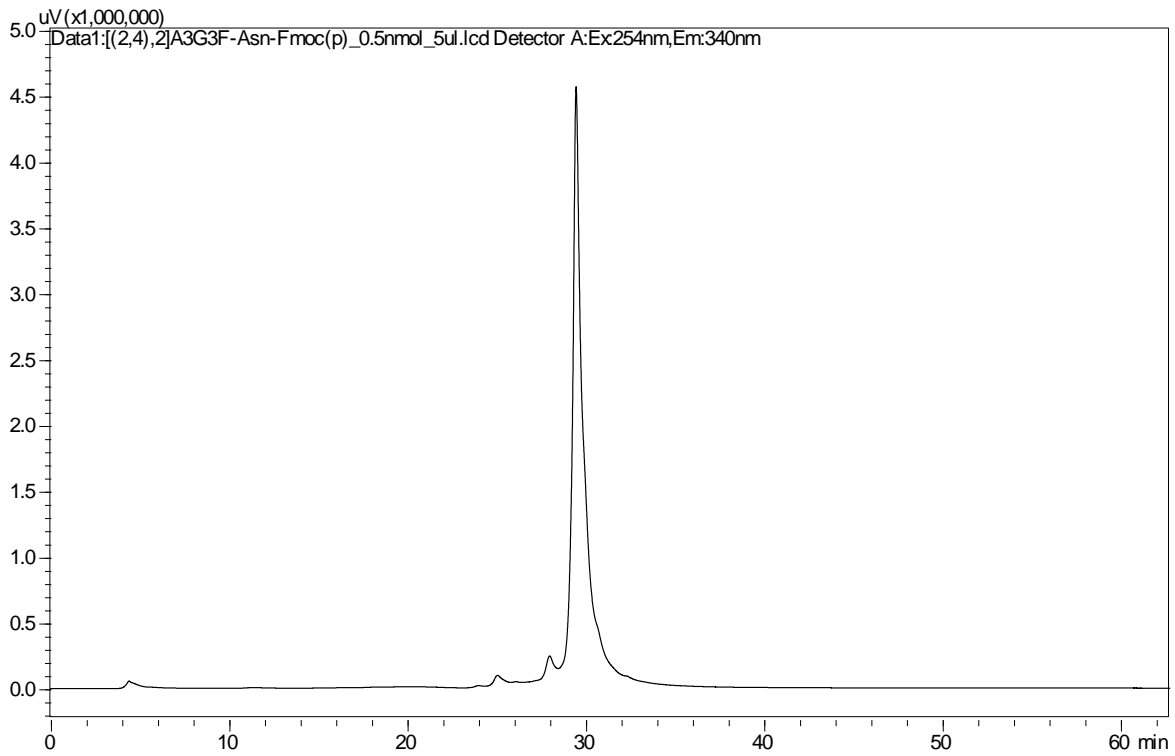
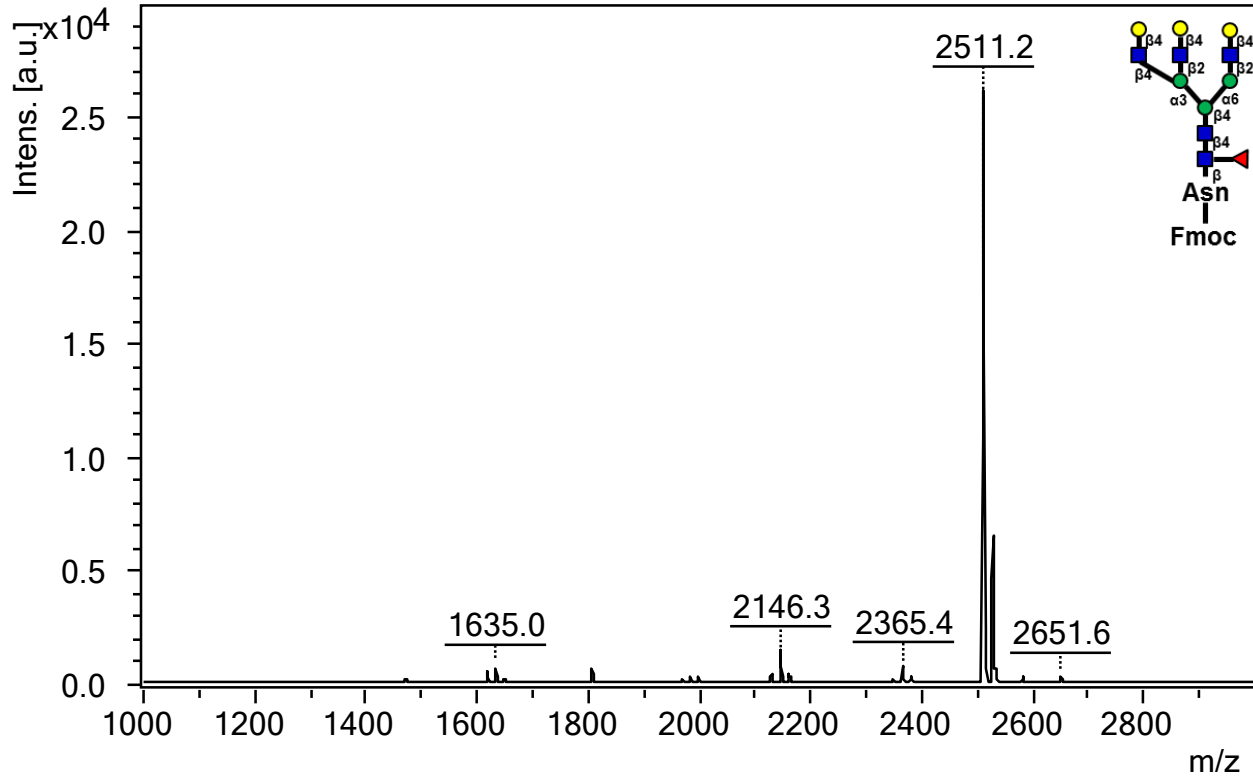
12a. A4G4-Asn-Fmoc



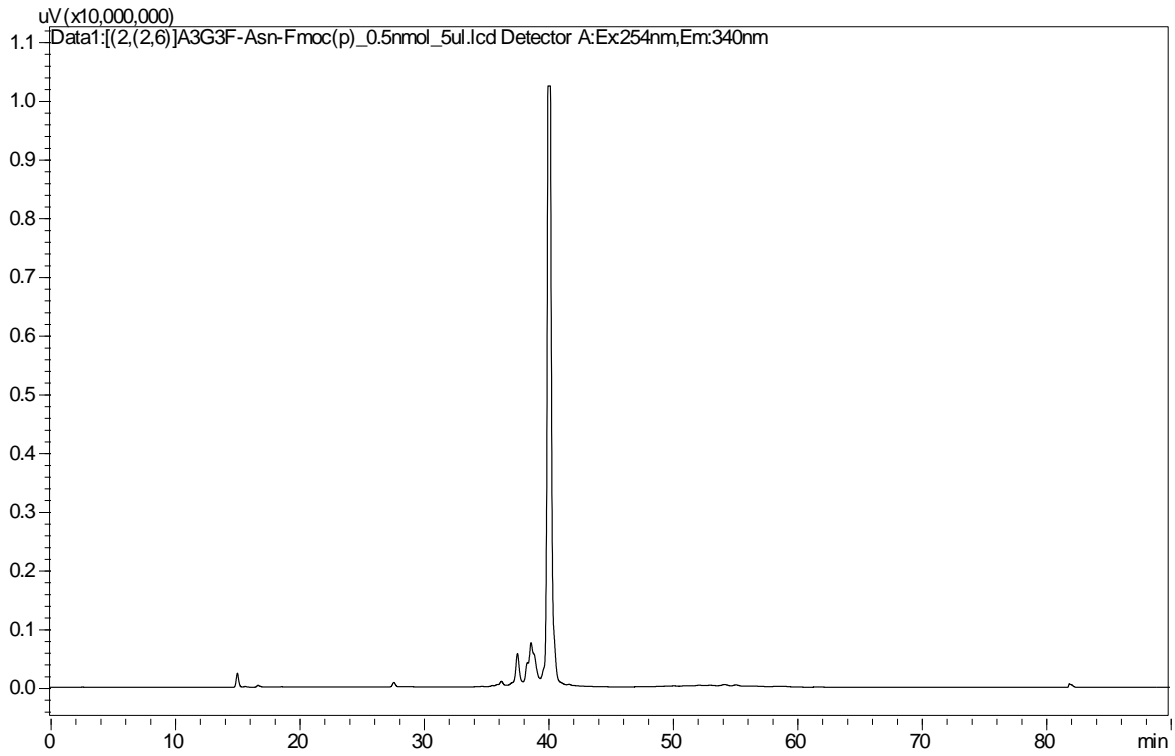
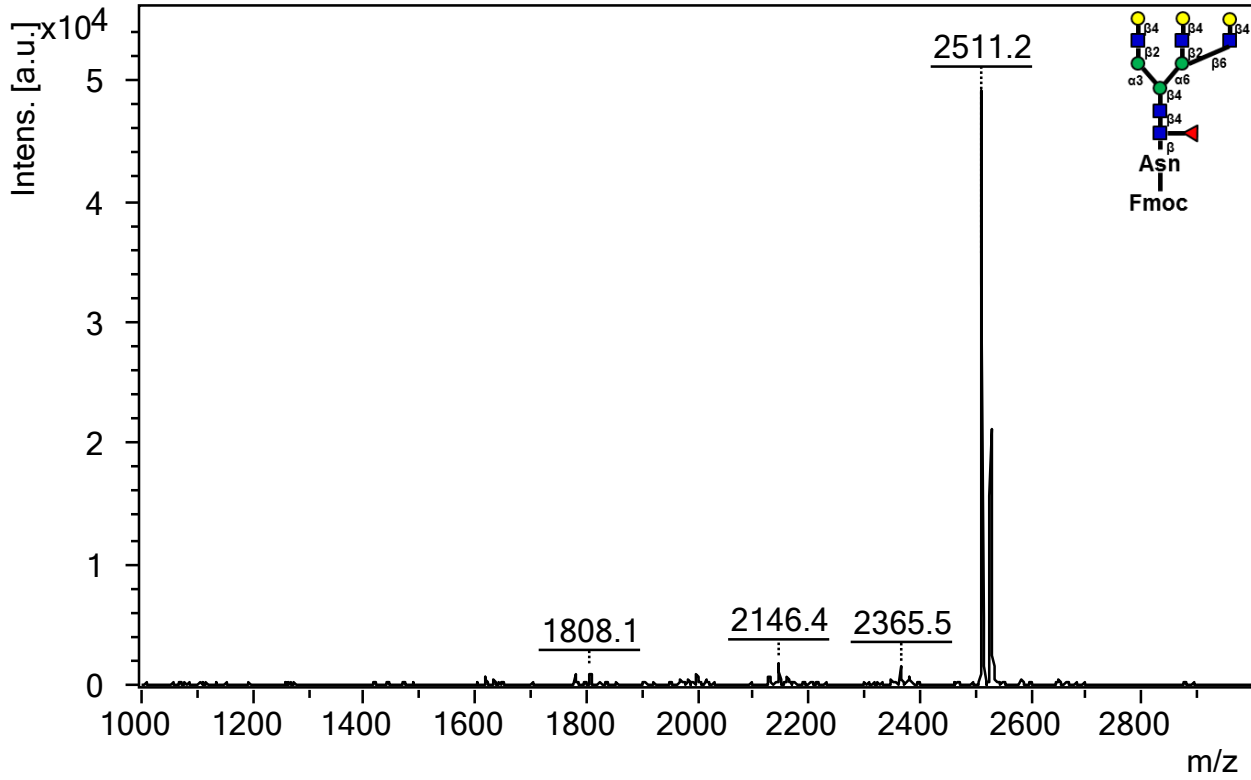
13a. A2G2F-Asn-Fmoc



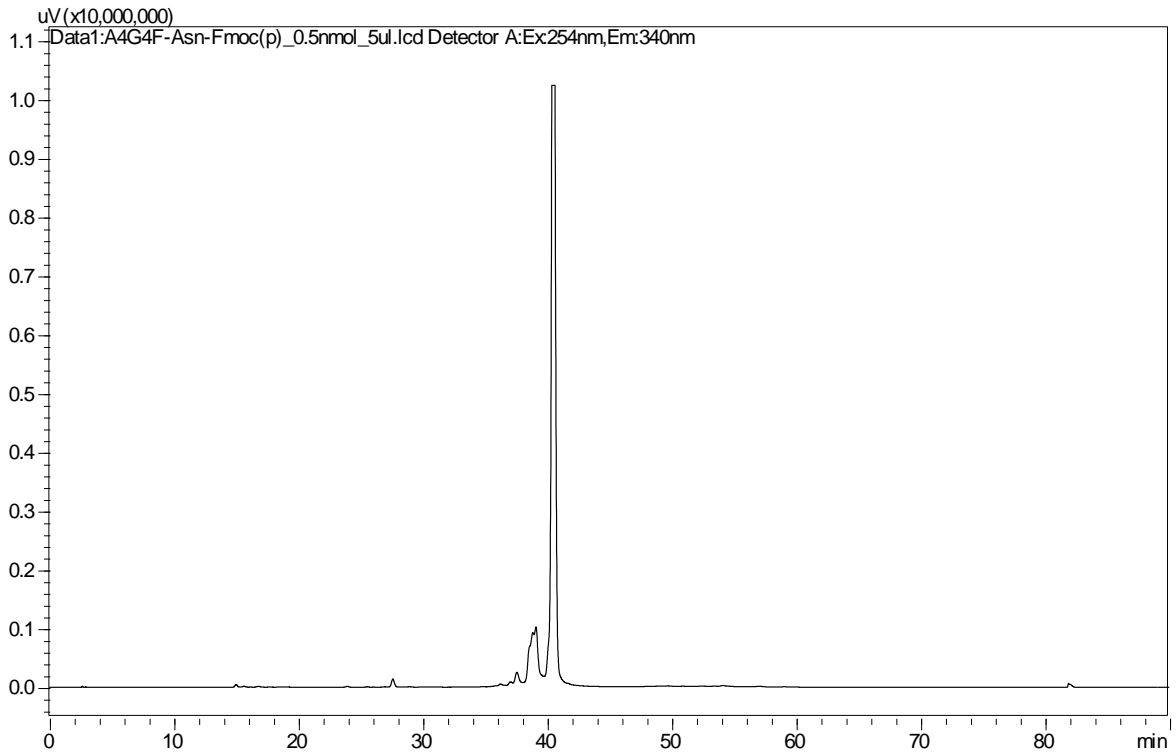
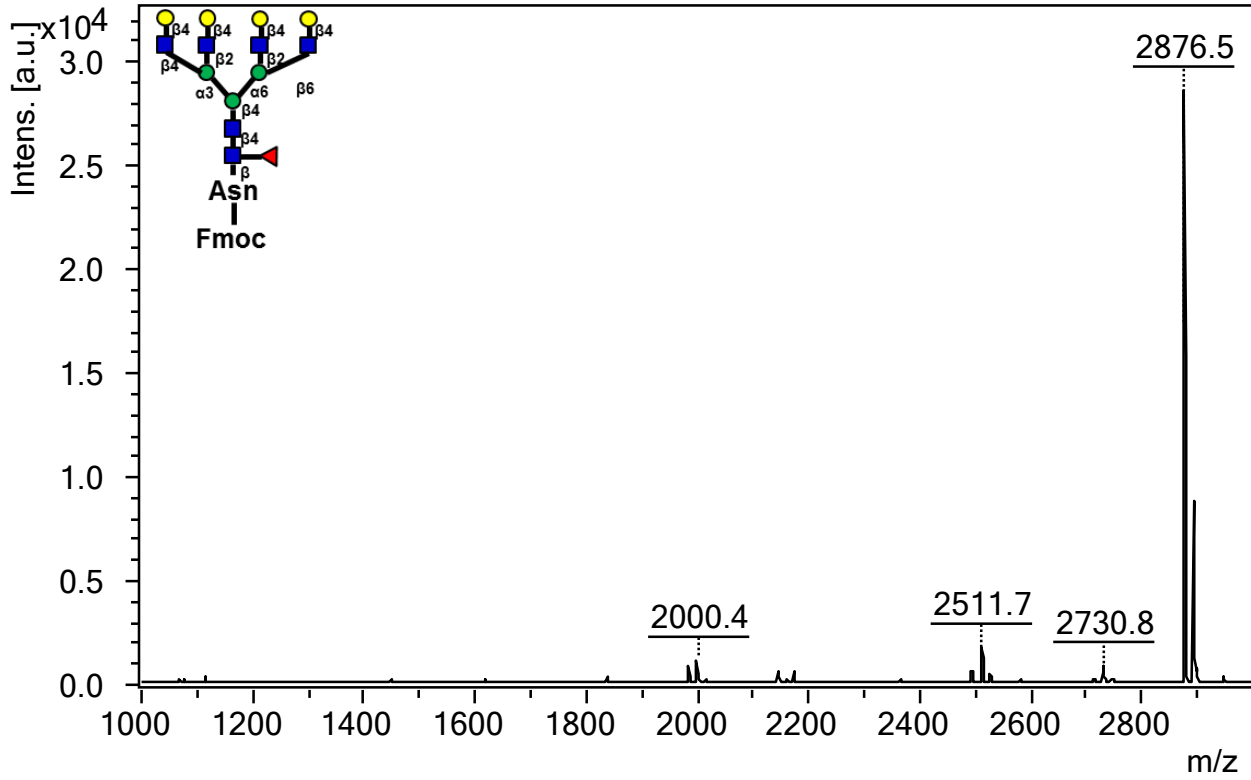
14a. 224A3G3F-Asn-Fmoc



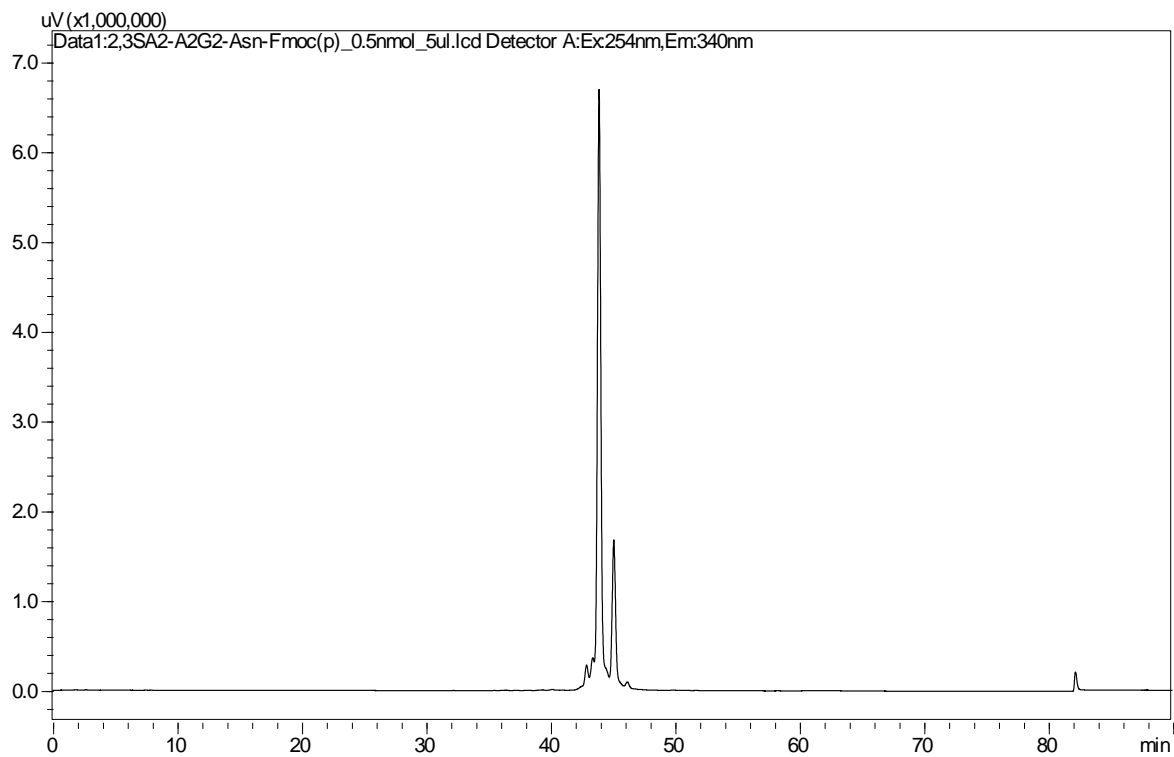
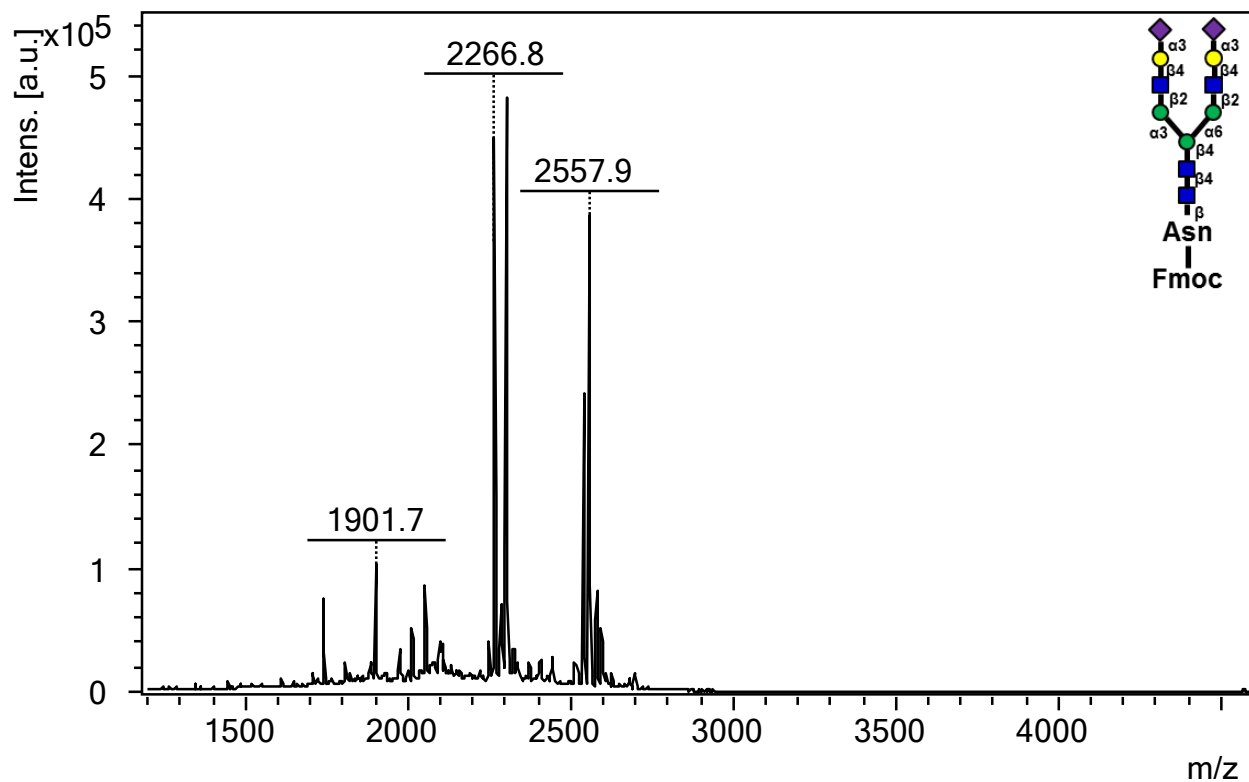
15a. 226A3G3F-Asn-Fmoc



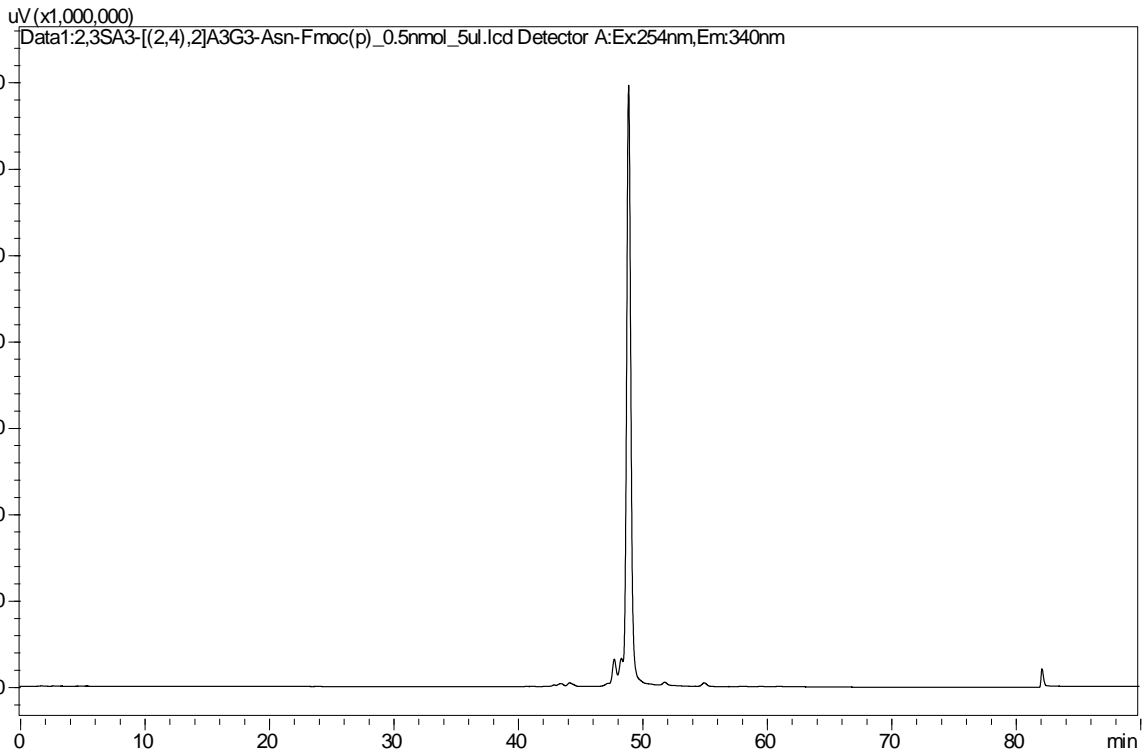
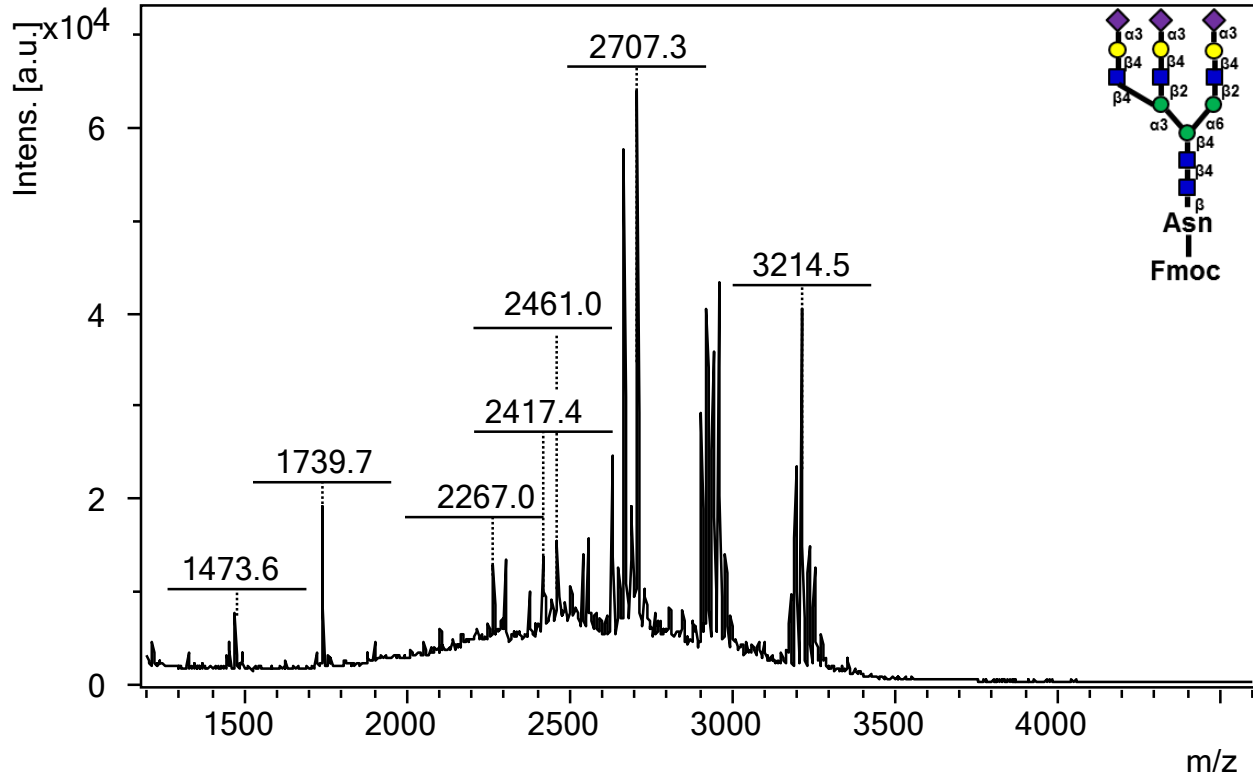
16a. A4G4F-Asn-Fmoc



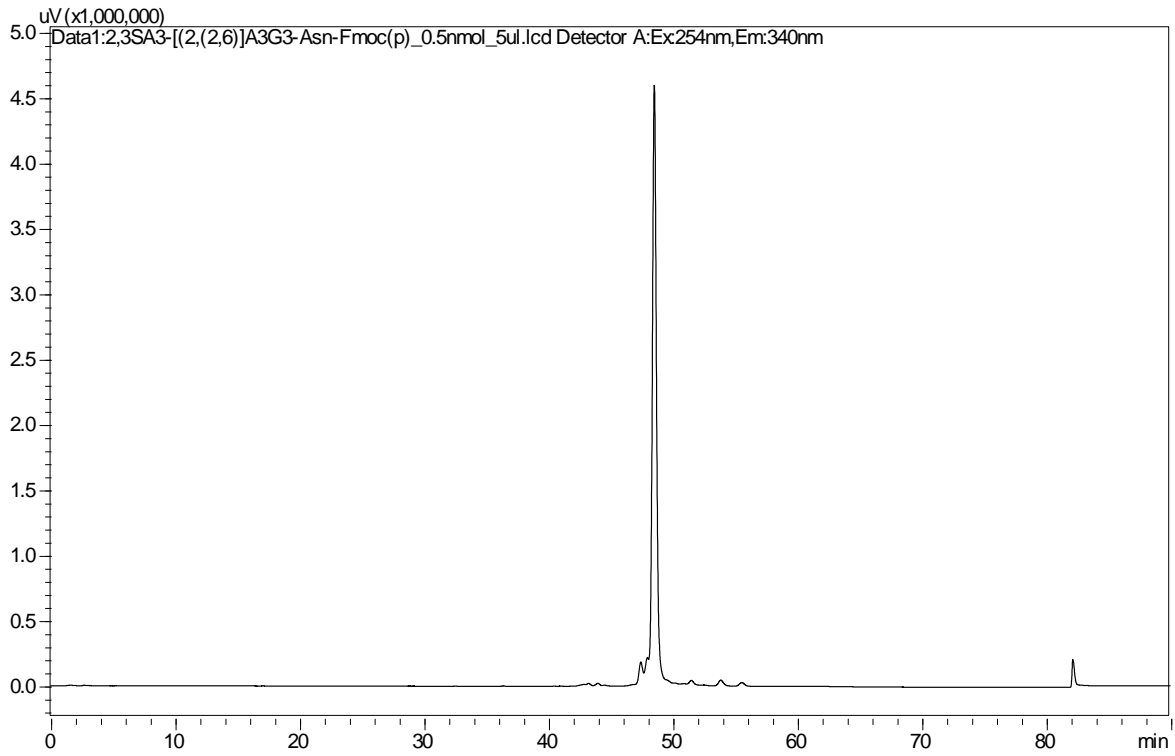
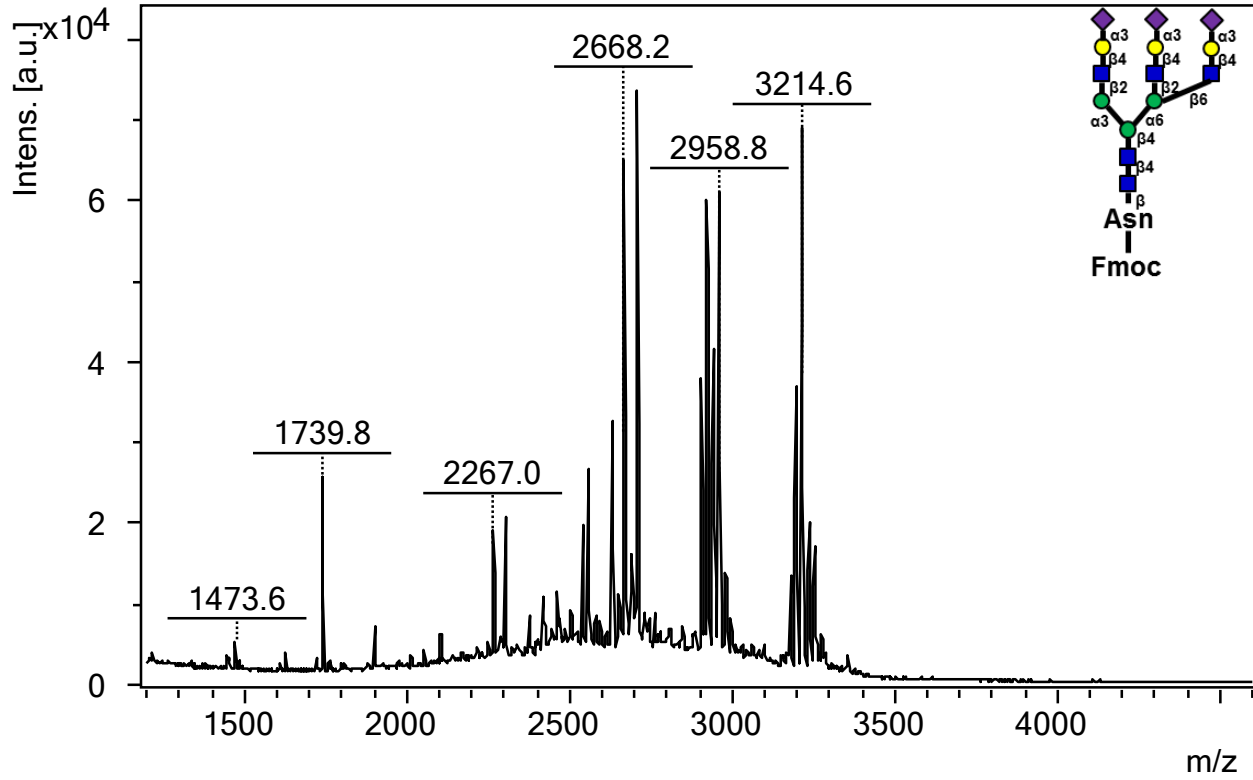
17a. 2,3SA2-A2G2-Asn-Fmoc



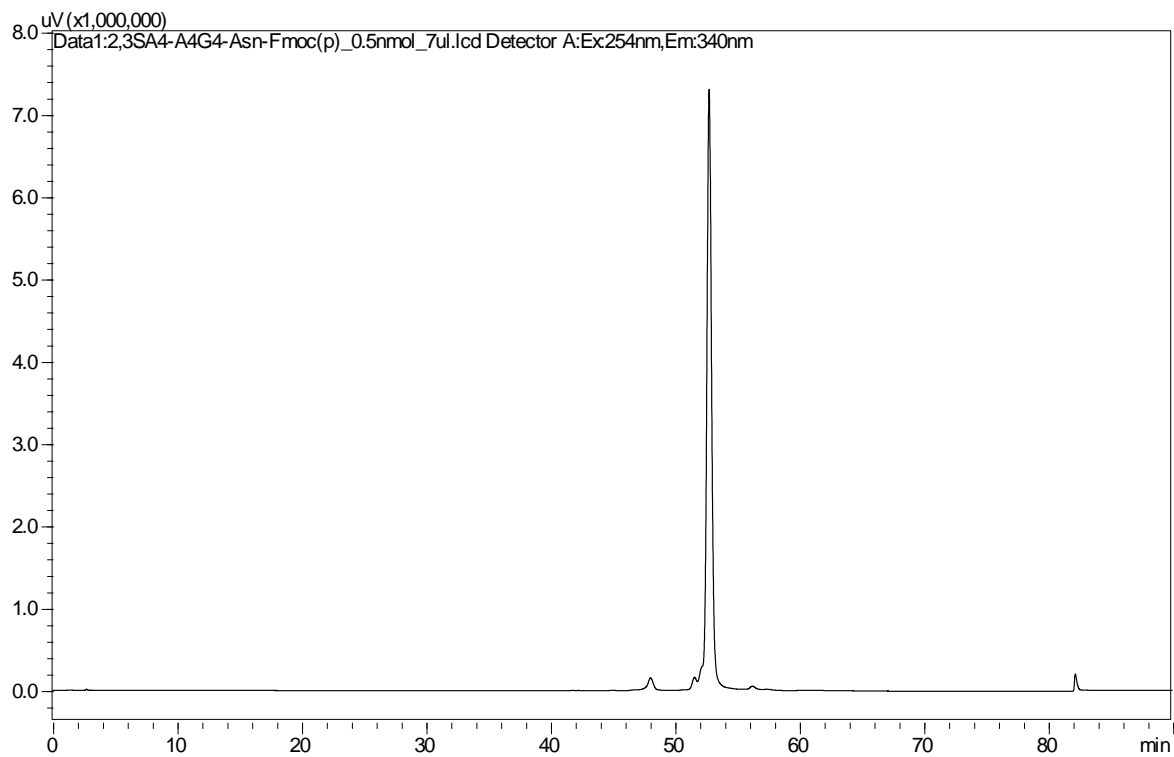
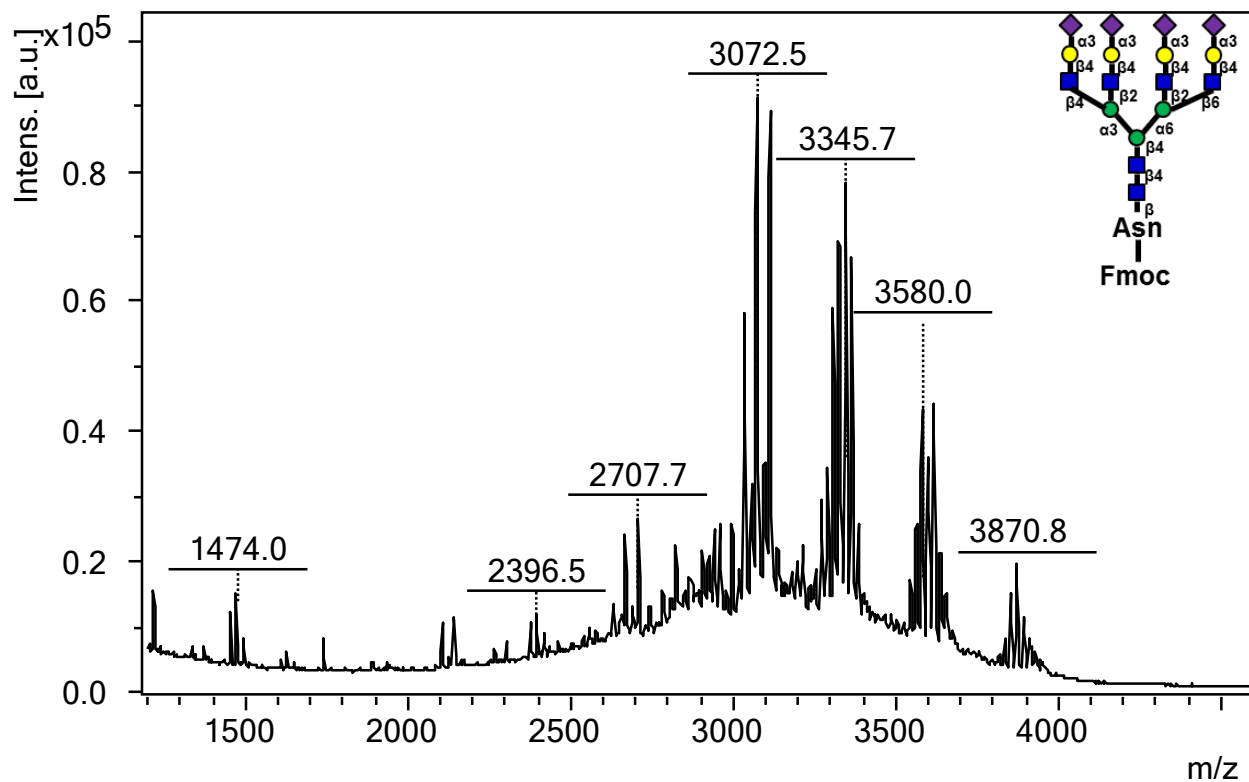
18a. 2,3SA3-224A3G3-Asn-Fmoc



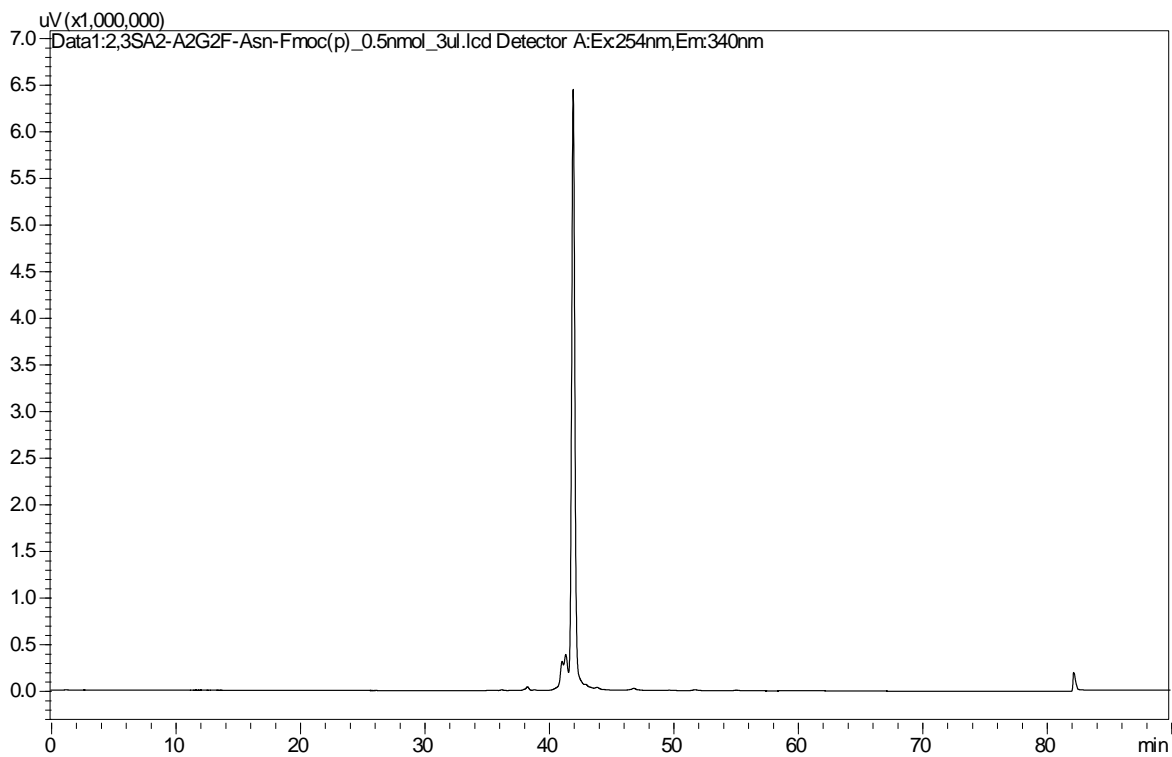
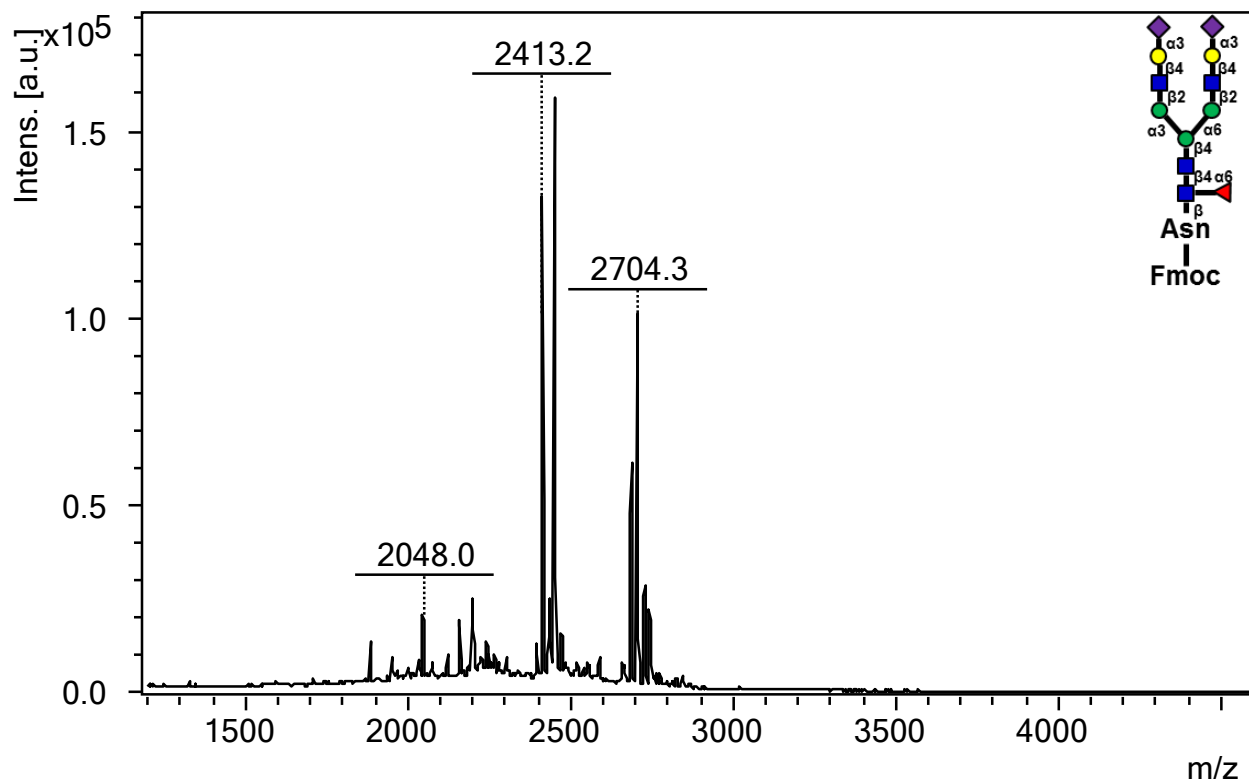
19a. 2,3SA3-226A3G3-Asn-Fmoc



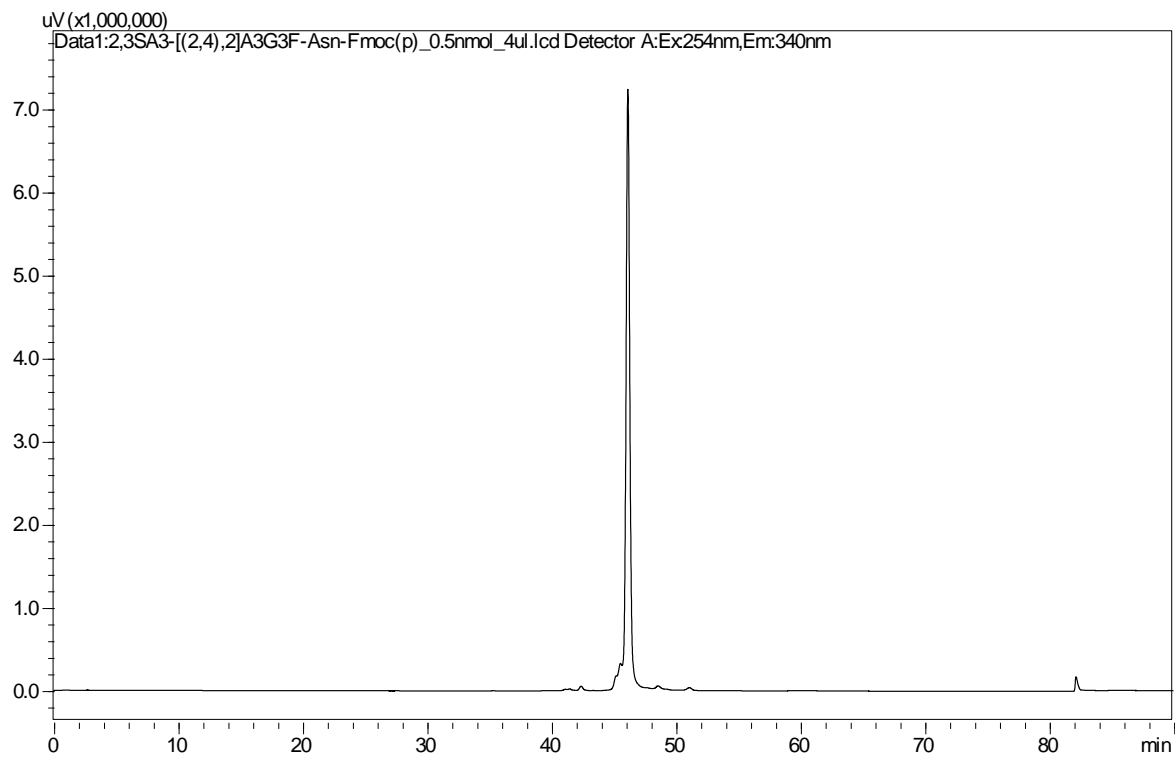
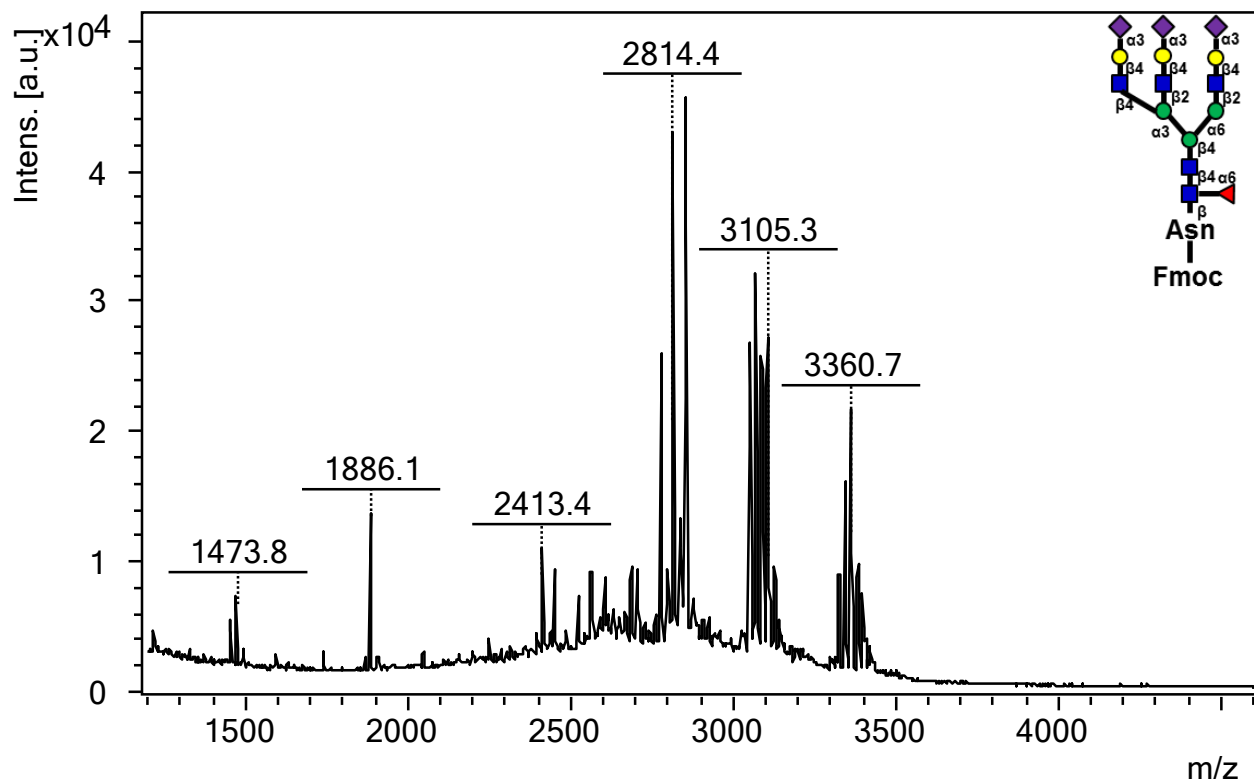
20a. 2,3SA4-A4G4-Asn-Fmoc



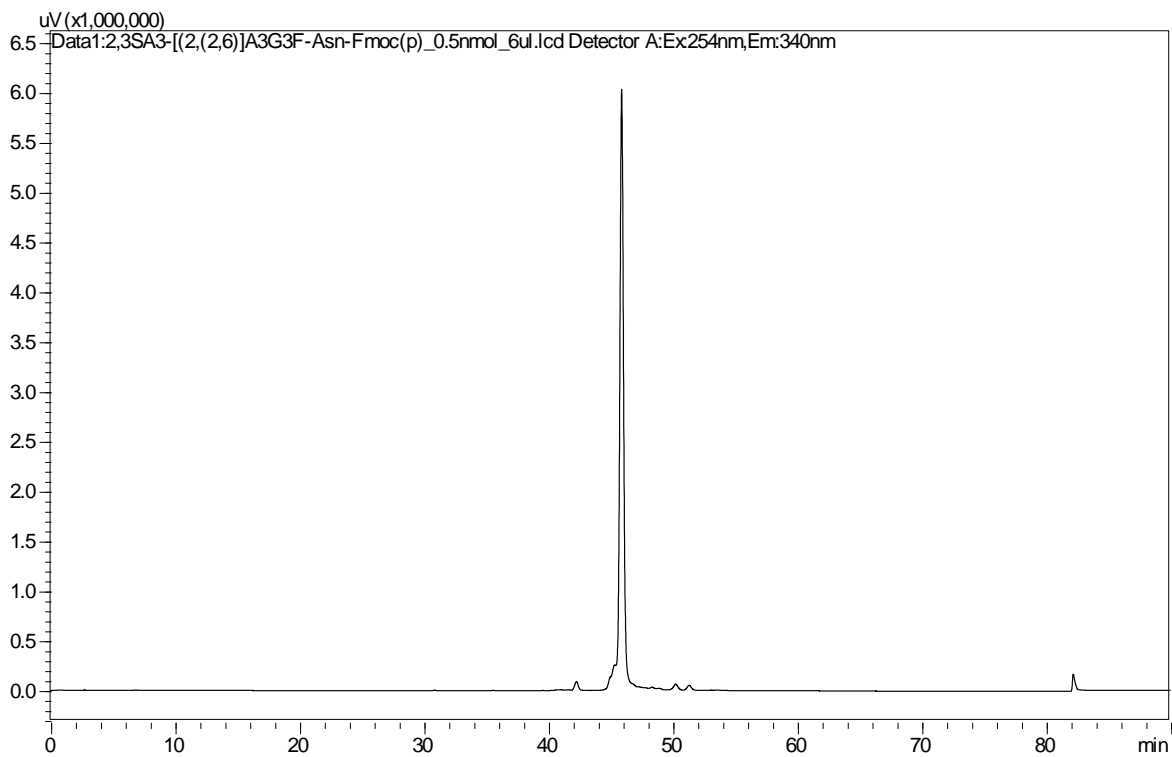
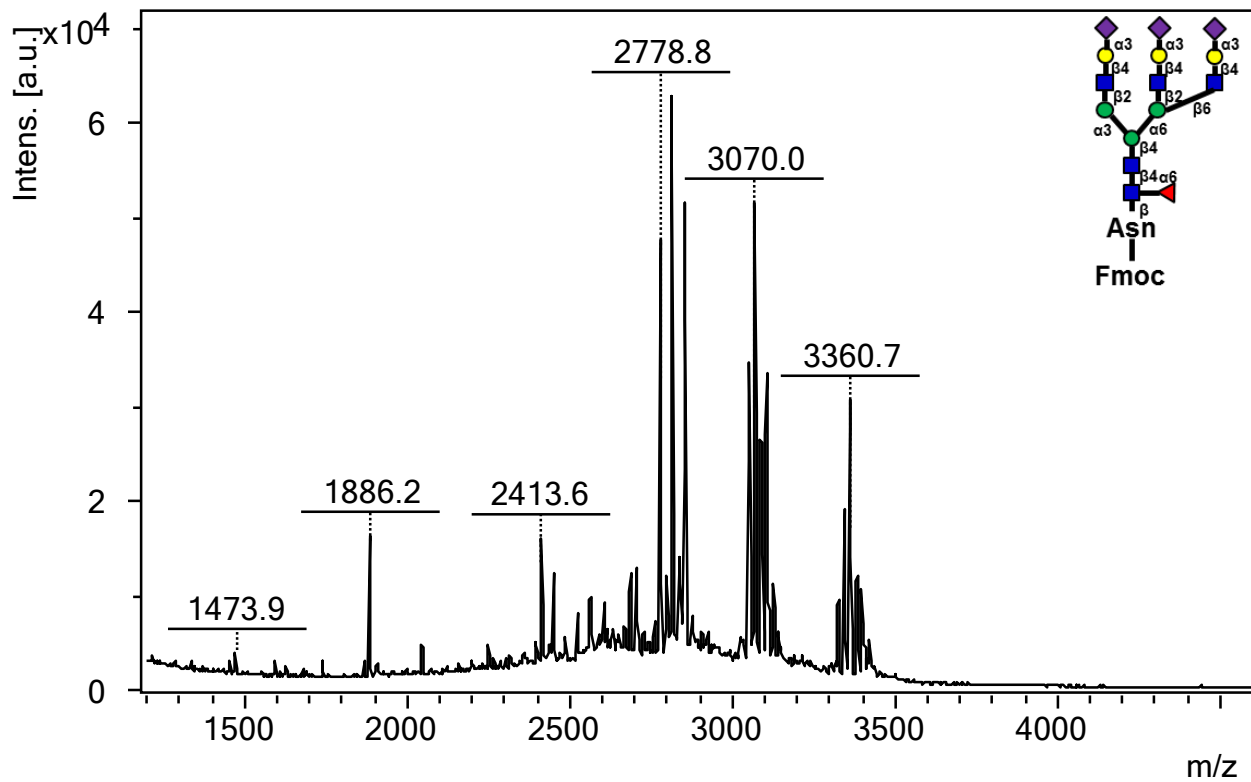
21a. 2,3SA2-A2G2F-Asn-Fmoc



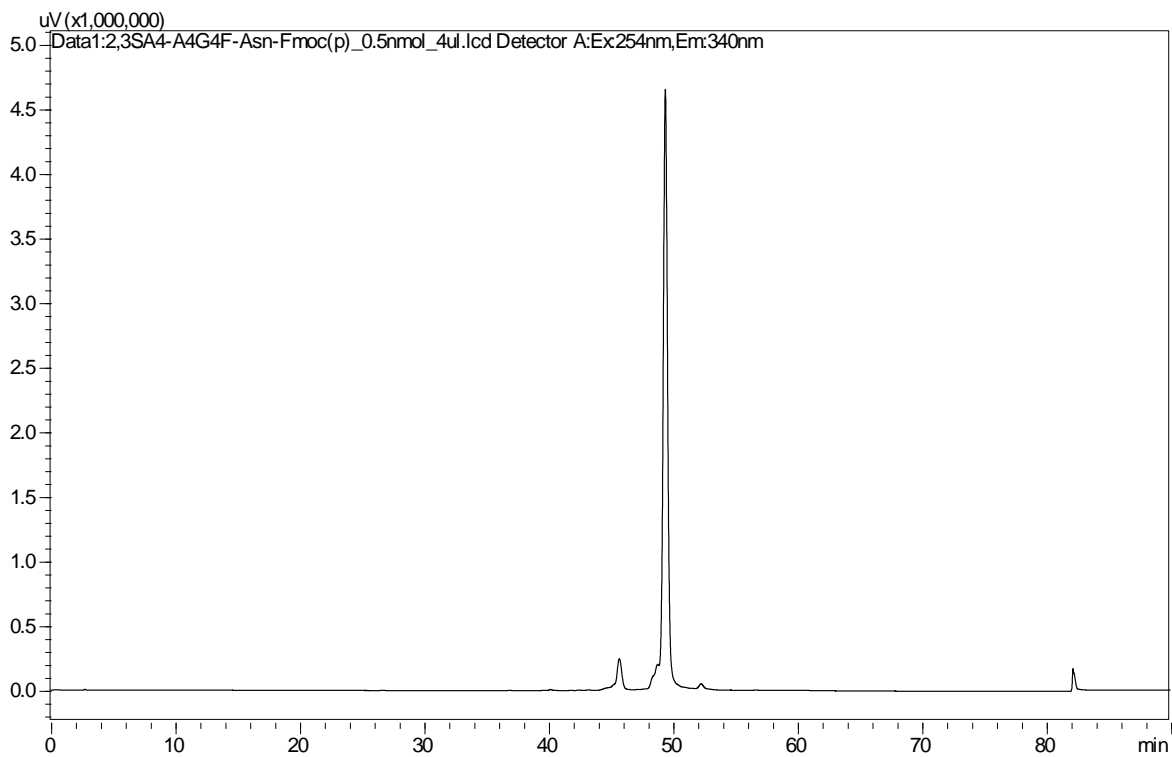
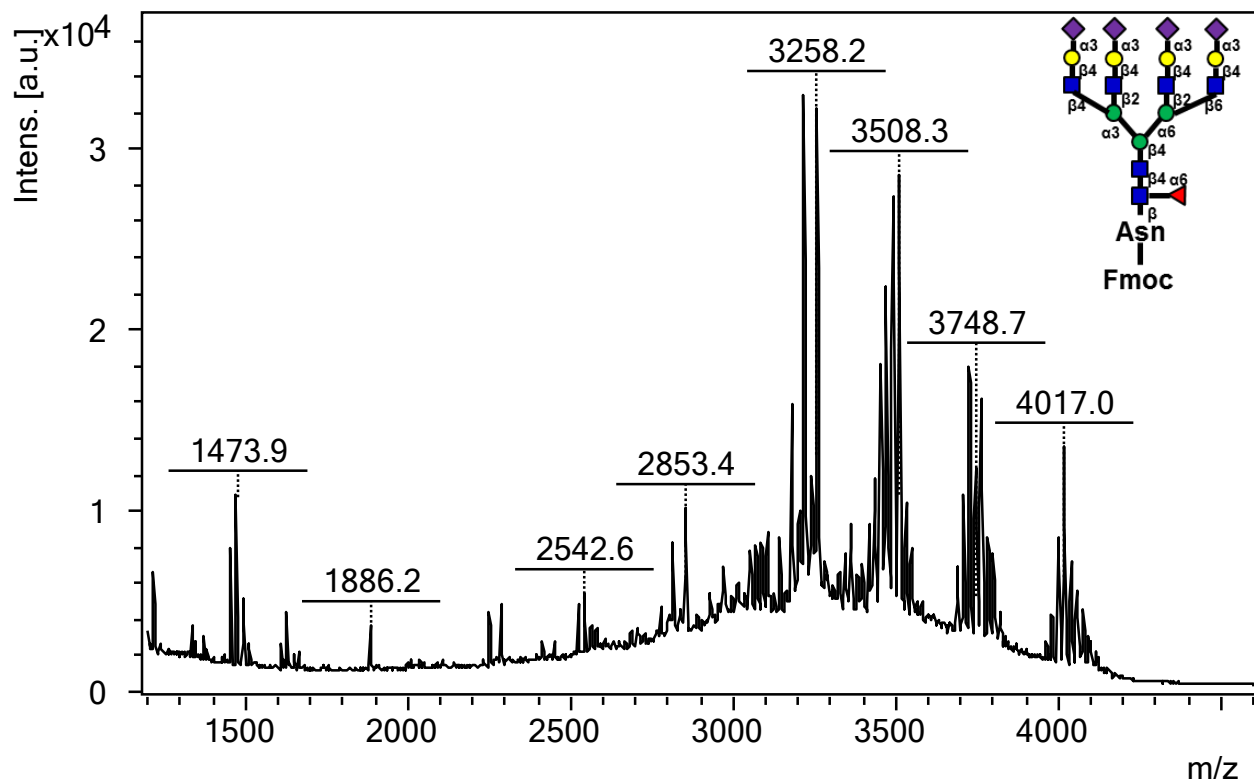
22a. 2,3SA3-224A3G3F-Asn-Fmoc



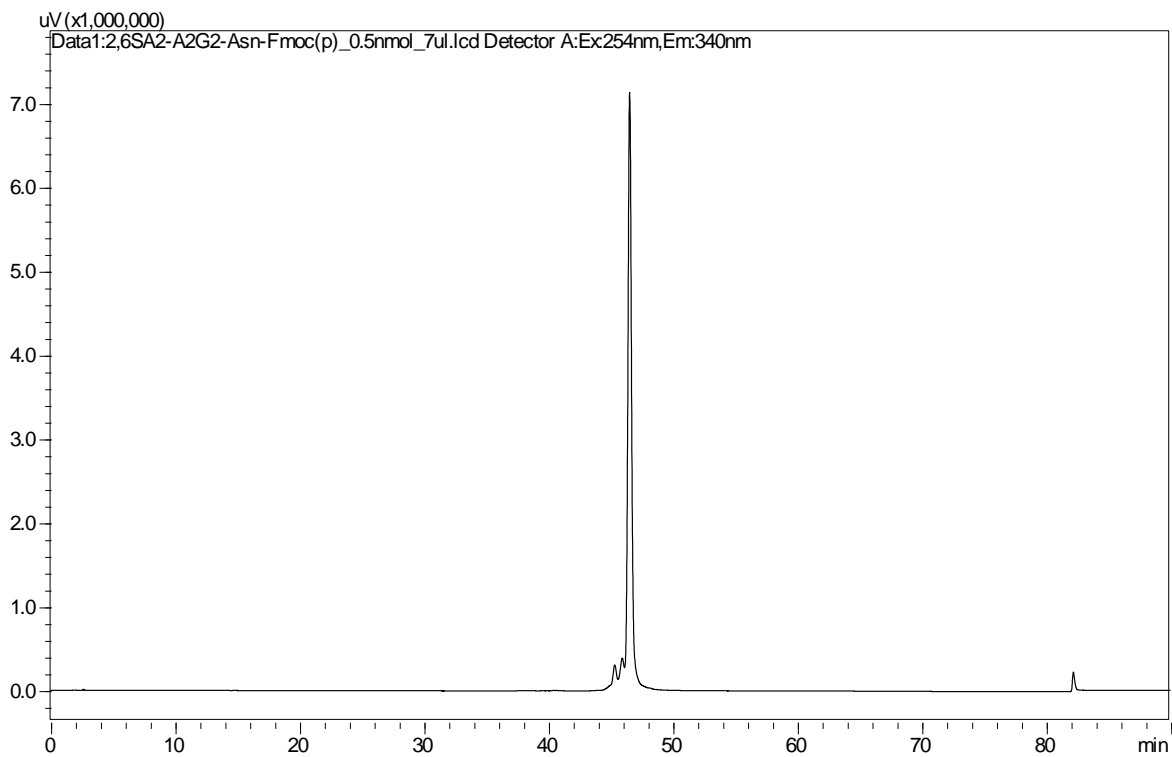
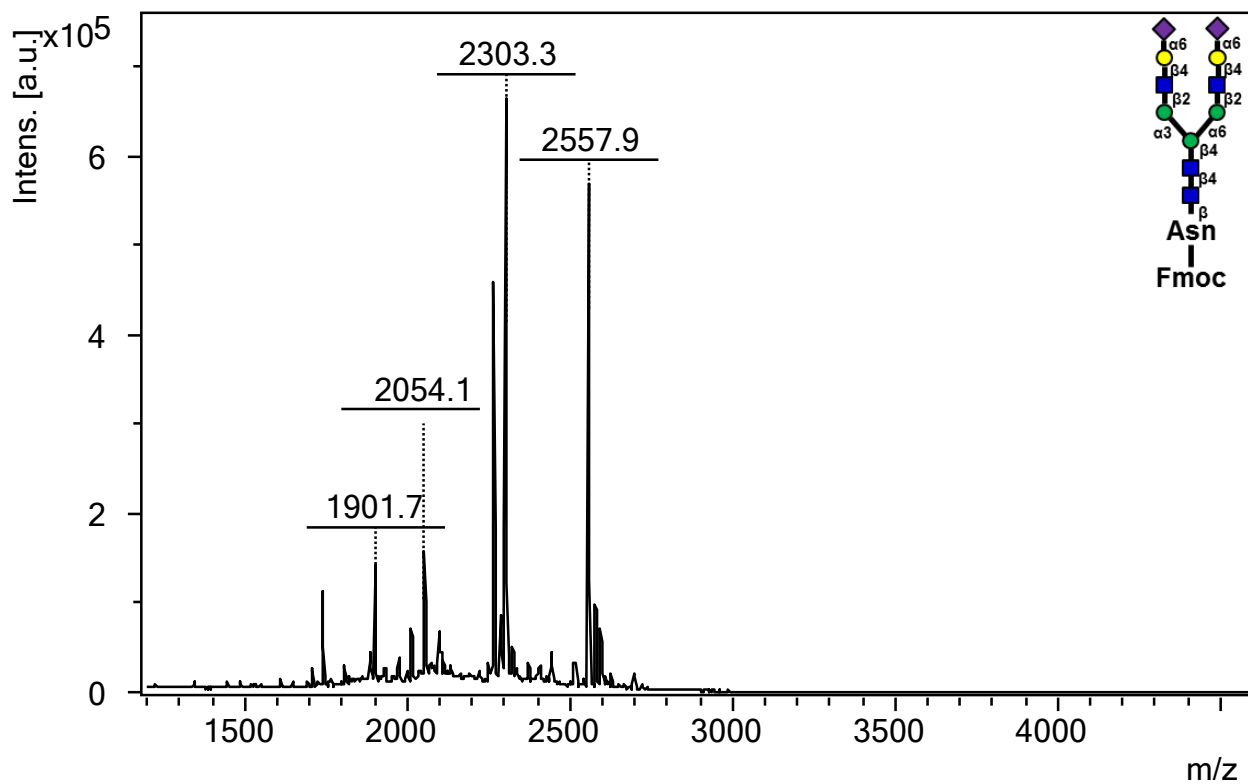
23a. 2,3SA3-226A3G3F-Asn-Fmoc



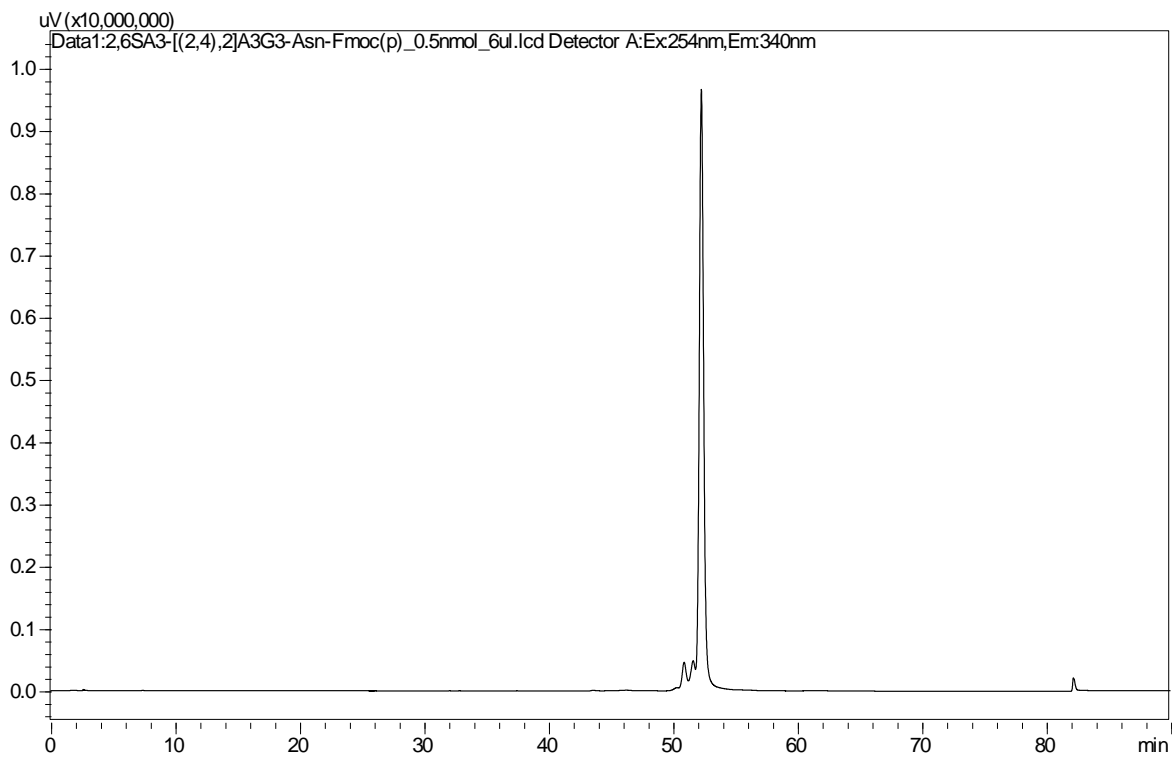
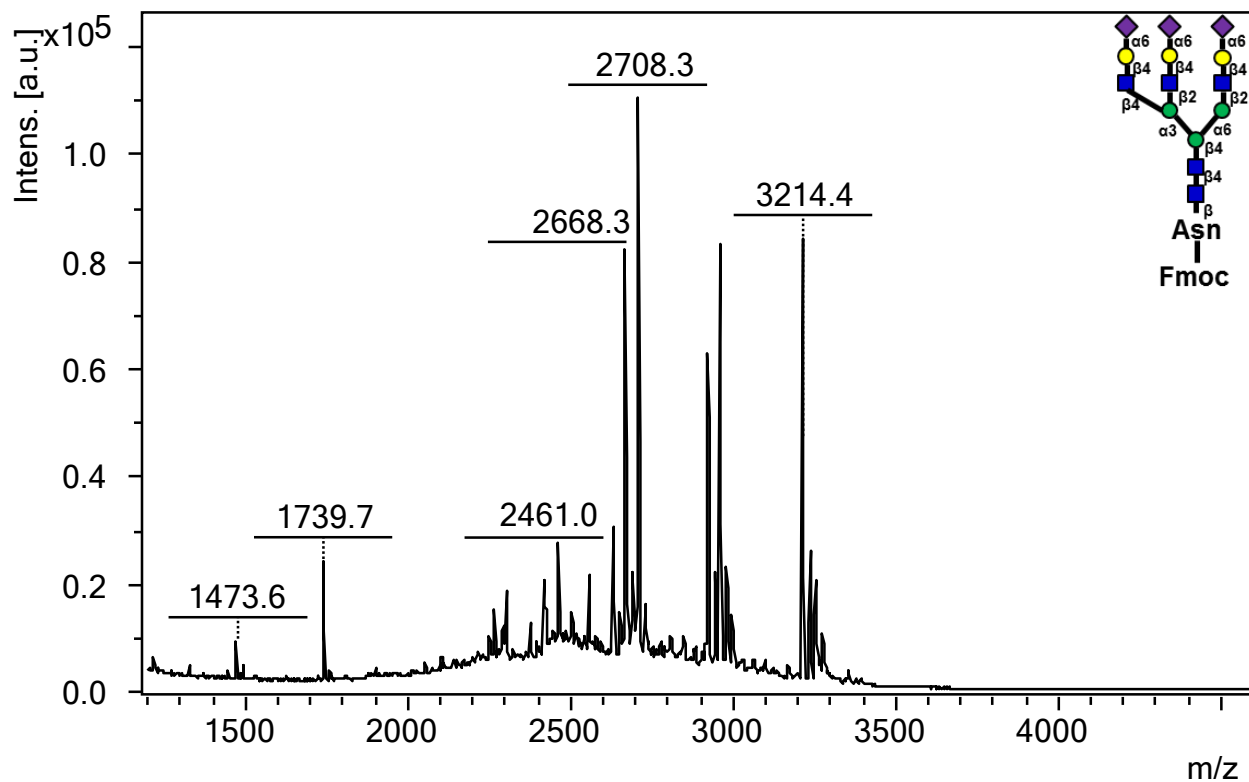
24a. 2,3SA4-A4G4F-Asn-Fmoc



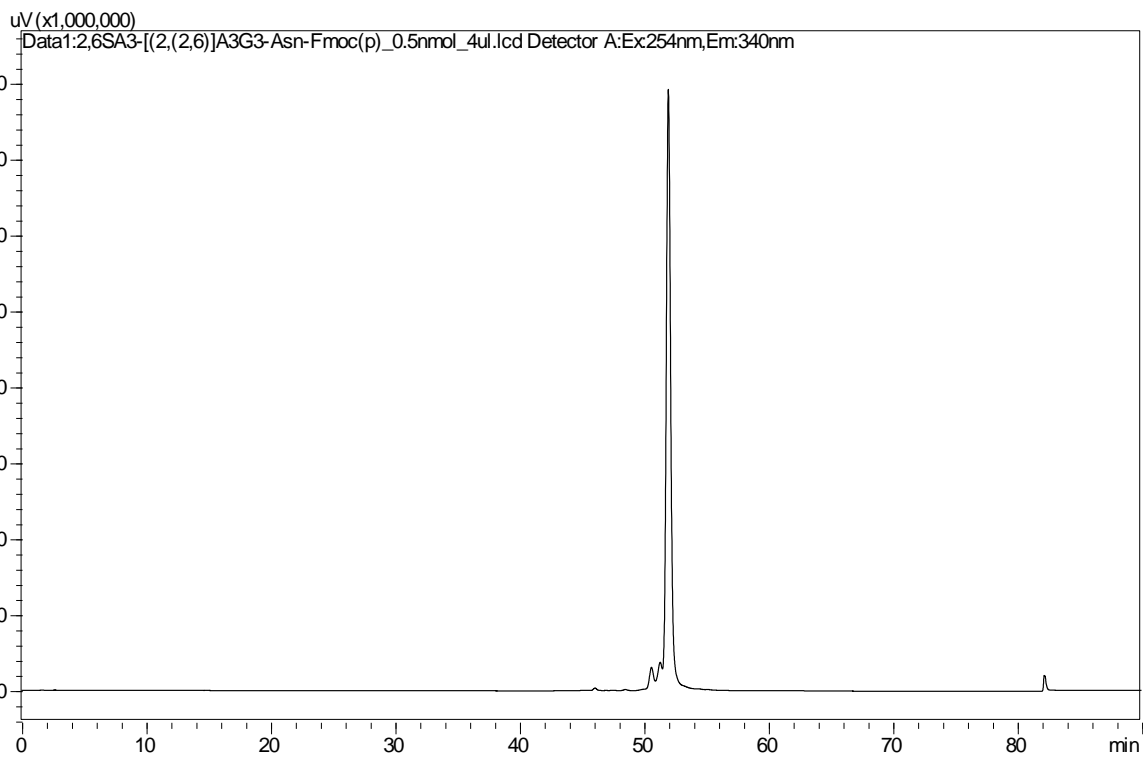
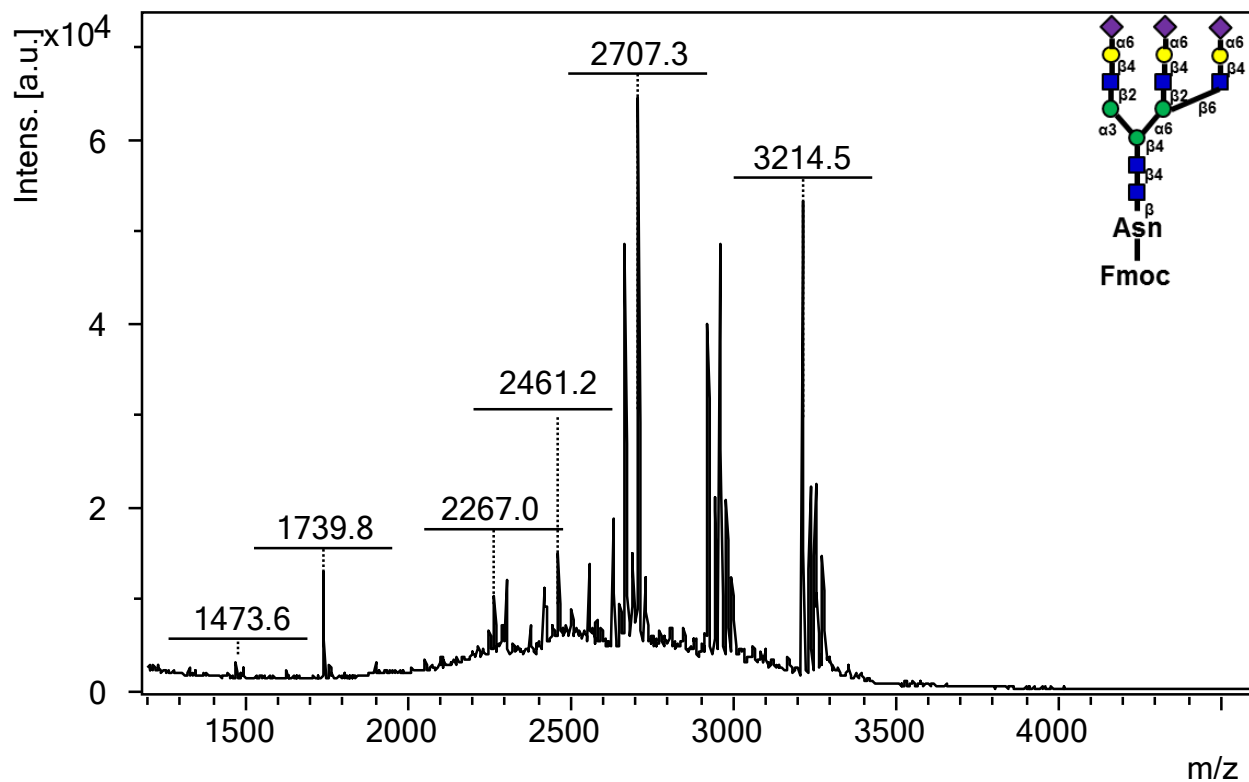
25a. 2,6SA2-A2G2-Asn-Fmoc



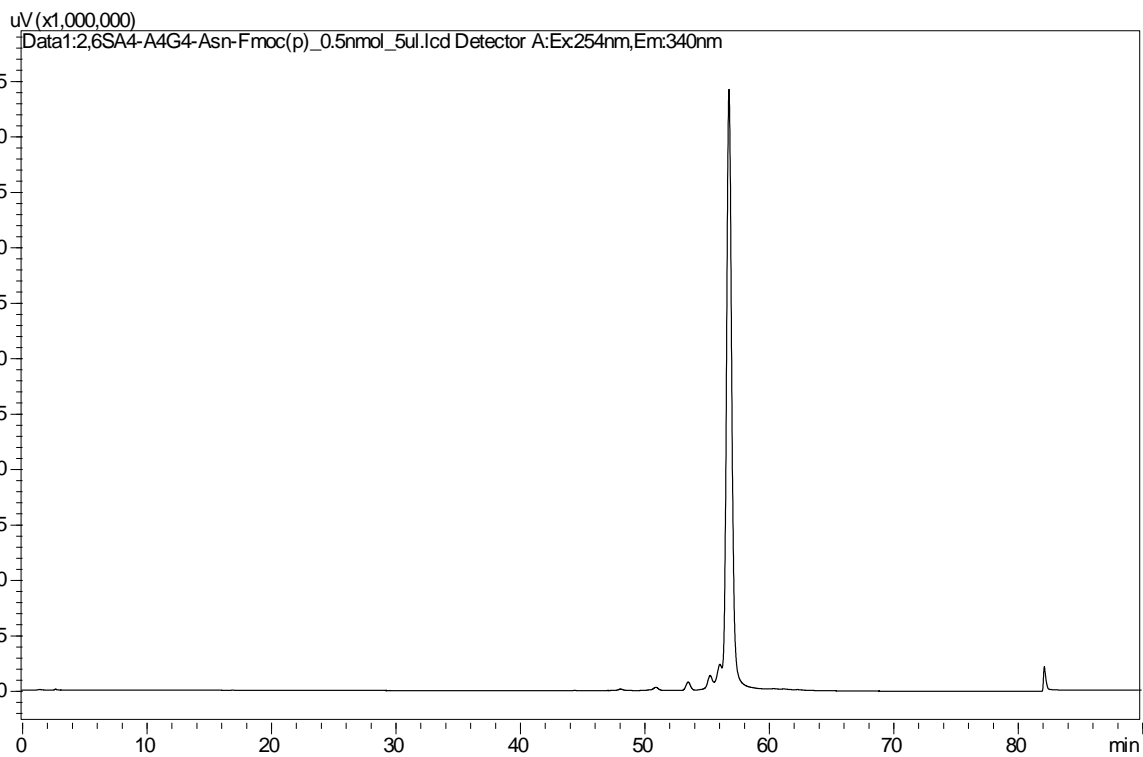
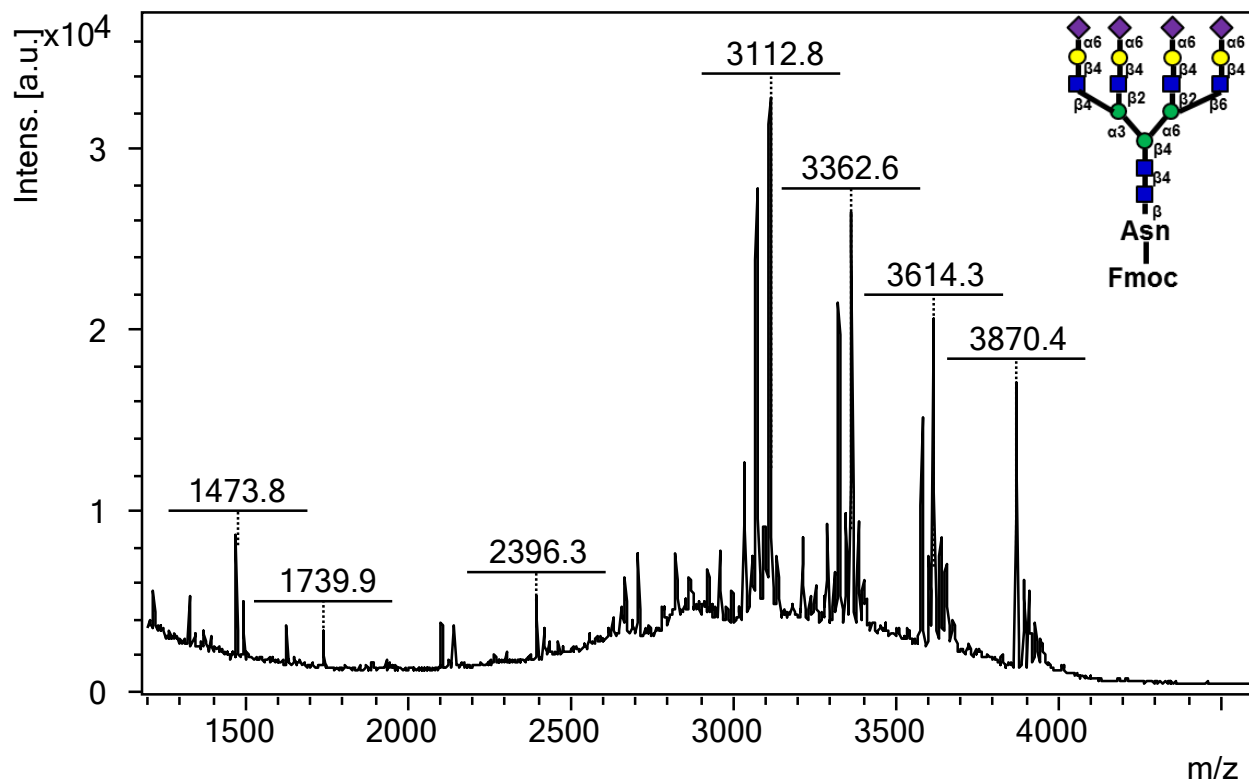
26a. 2,6SA3-224A3G3-Asn-Fmoc



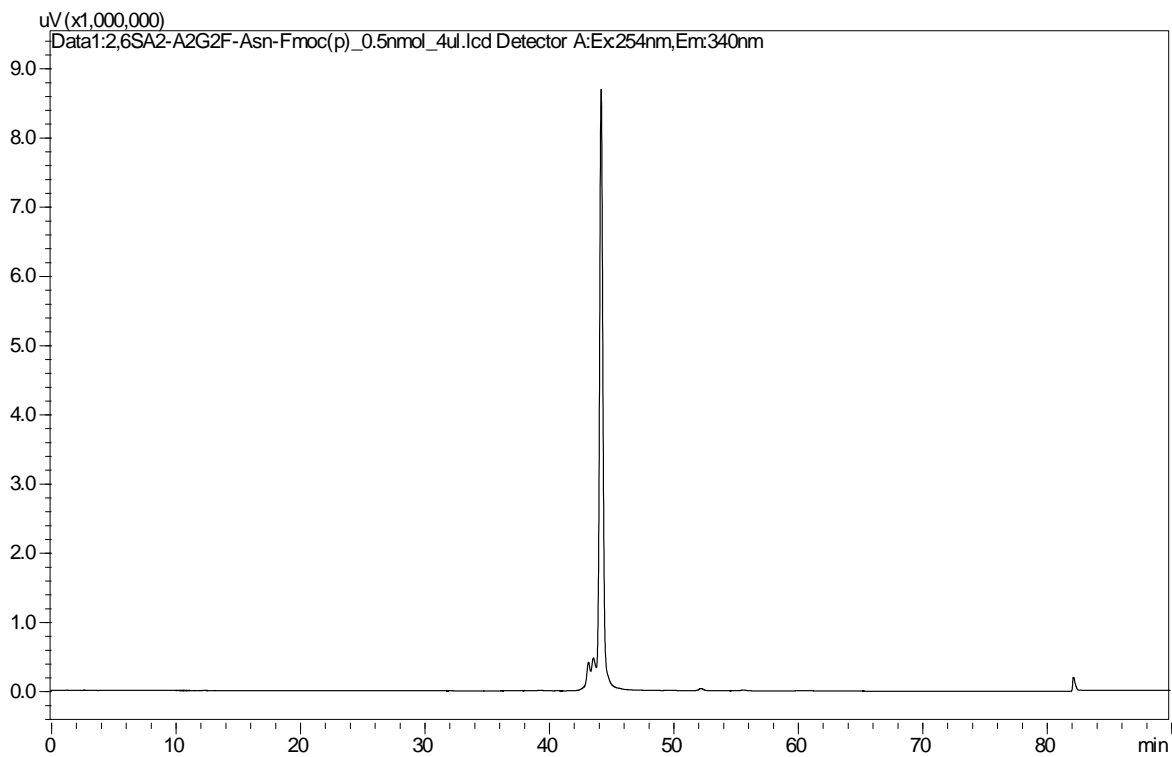
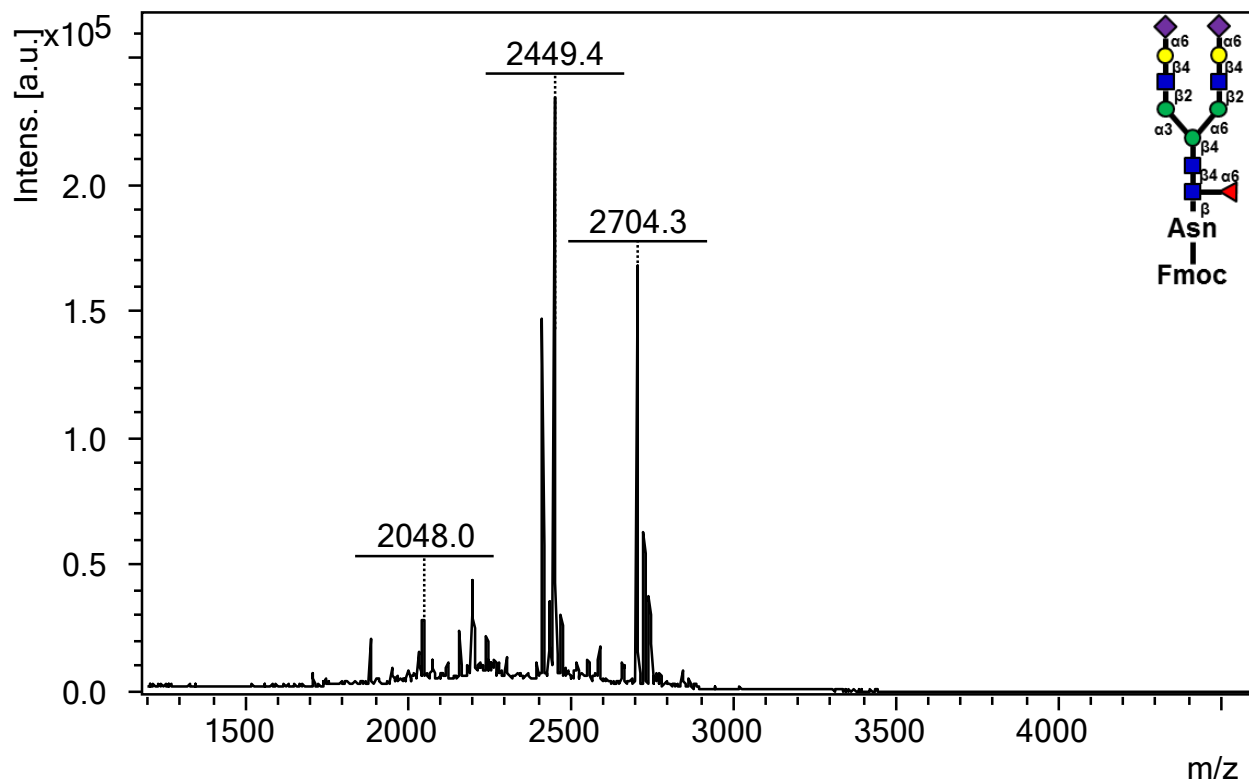
27a. 2,6SA3-226A3G3-Asn-Fmoc



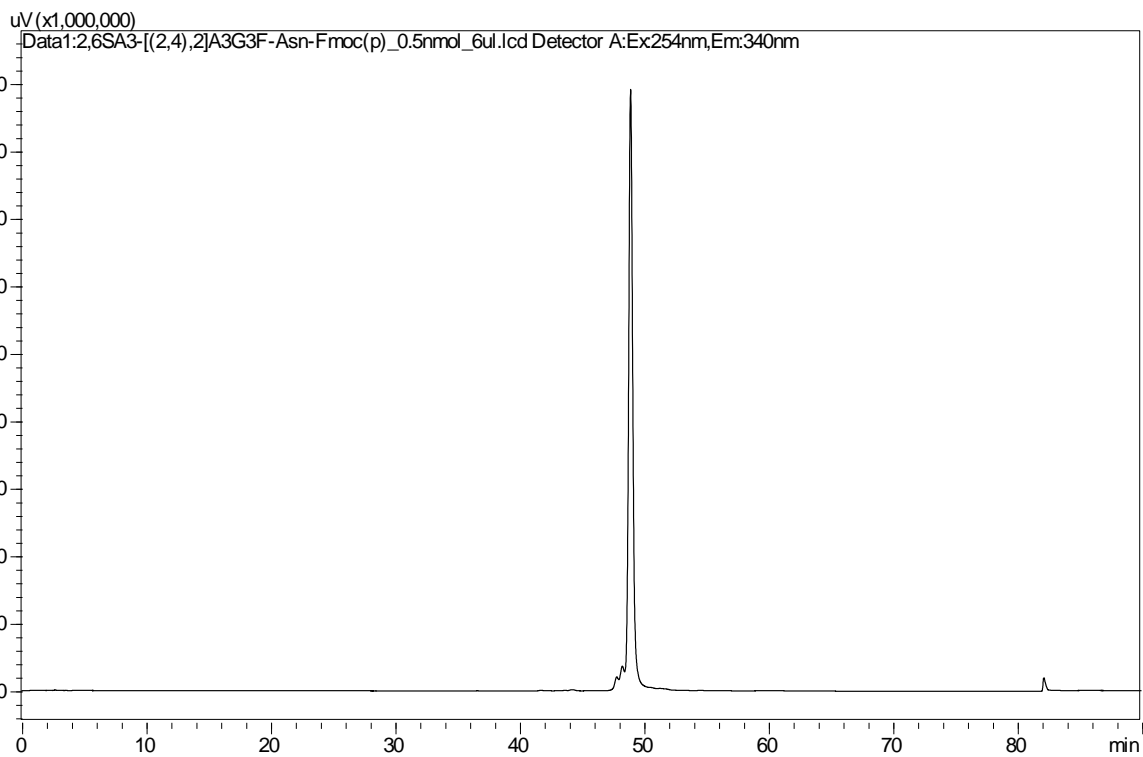
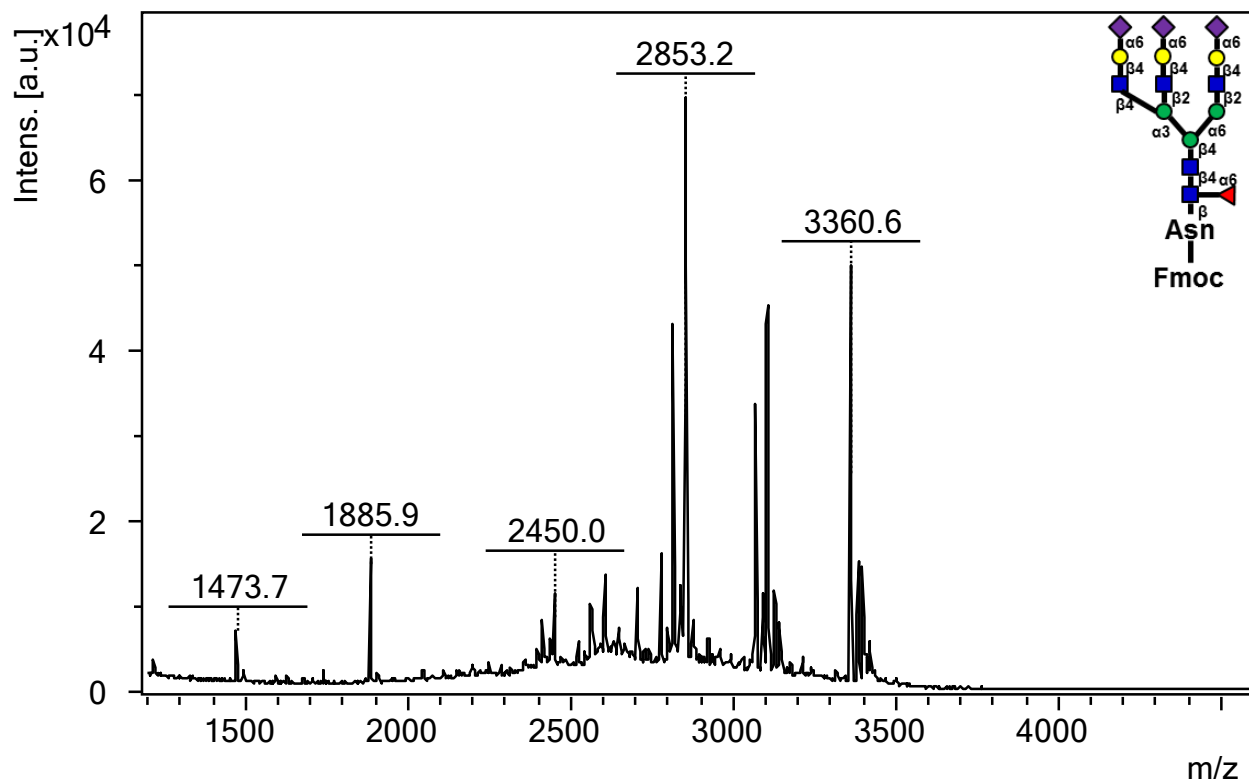
28a. 2,6SA4-A4G4-Asn-Fmoc



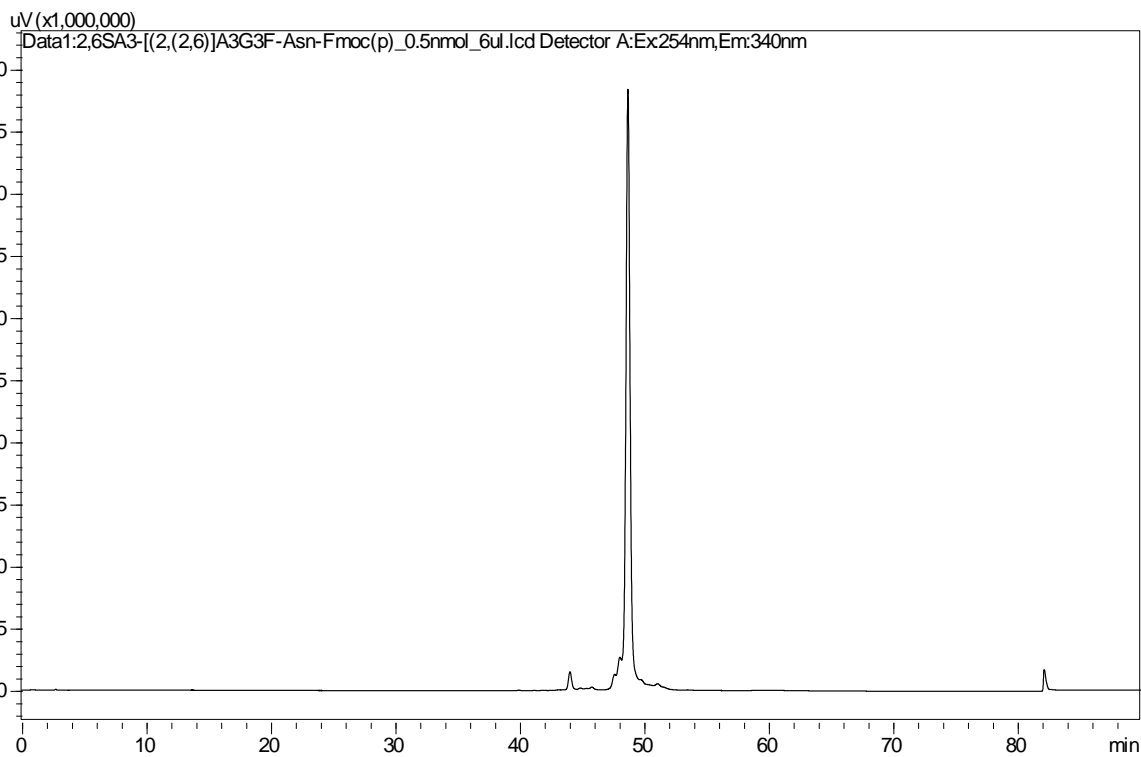
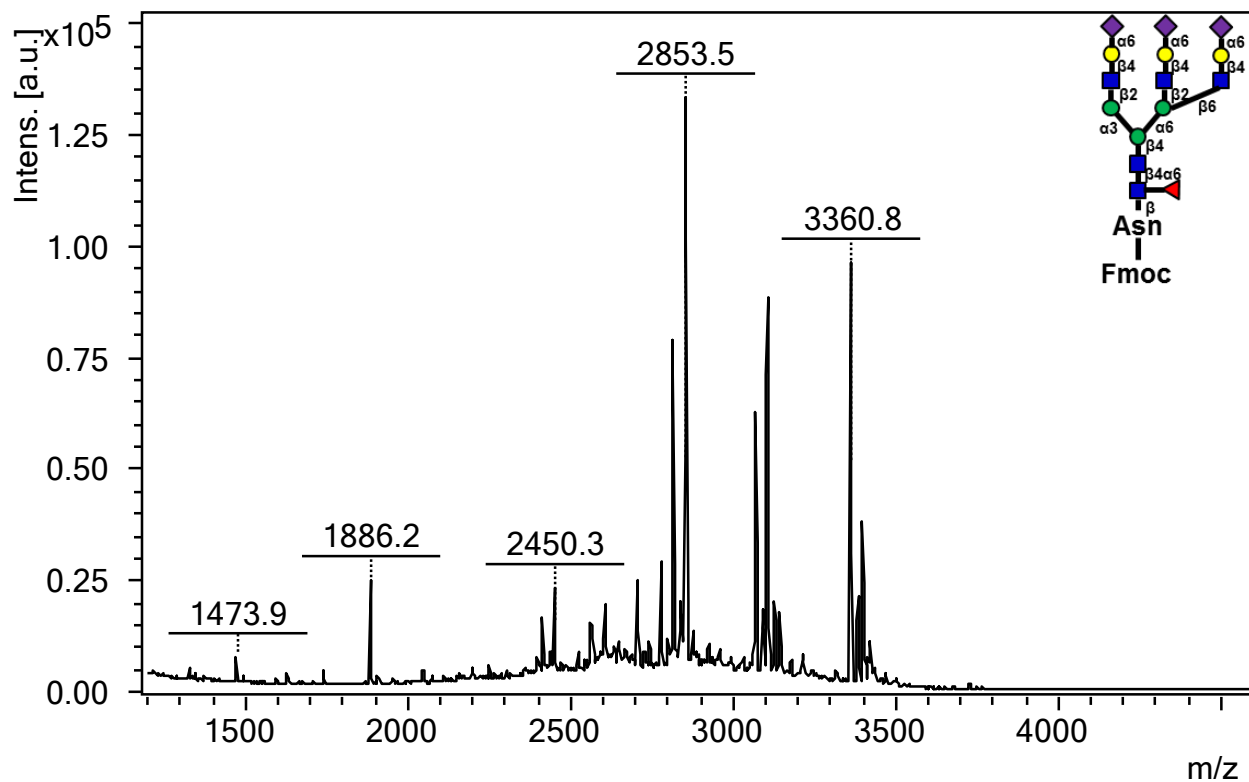
29a. 2,6SA2-A2G2F-Asn-Fmoc



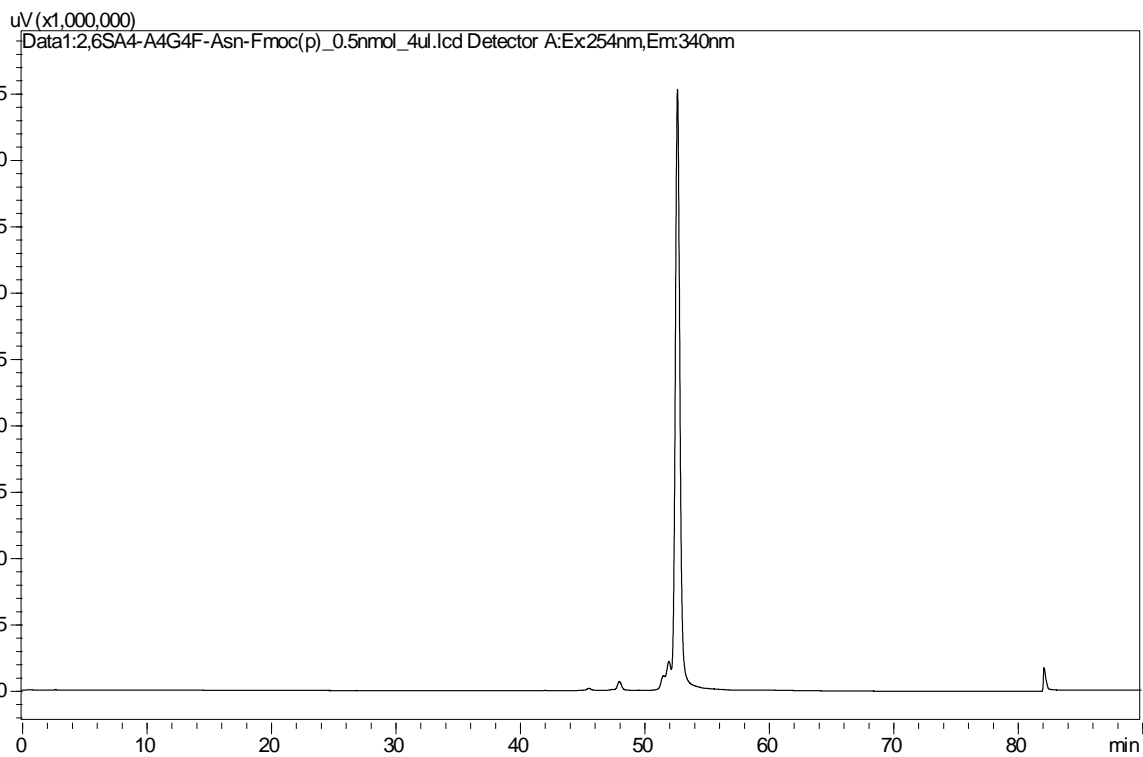
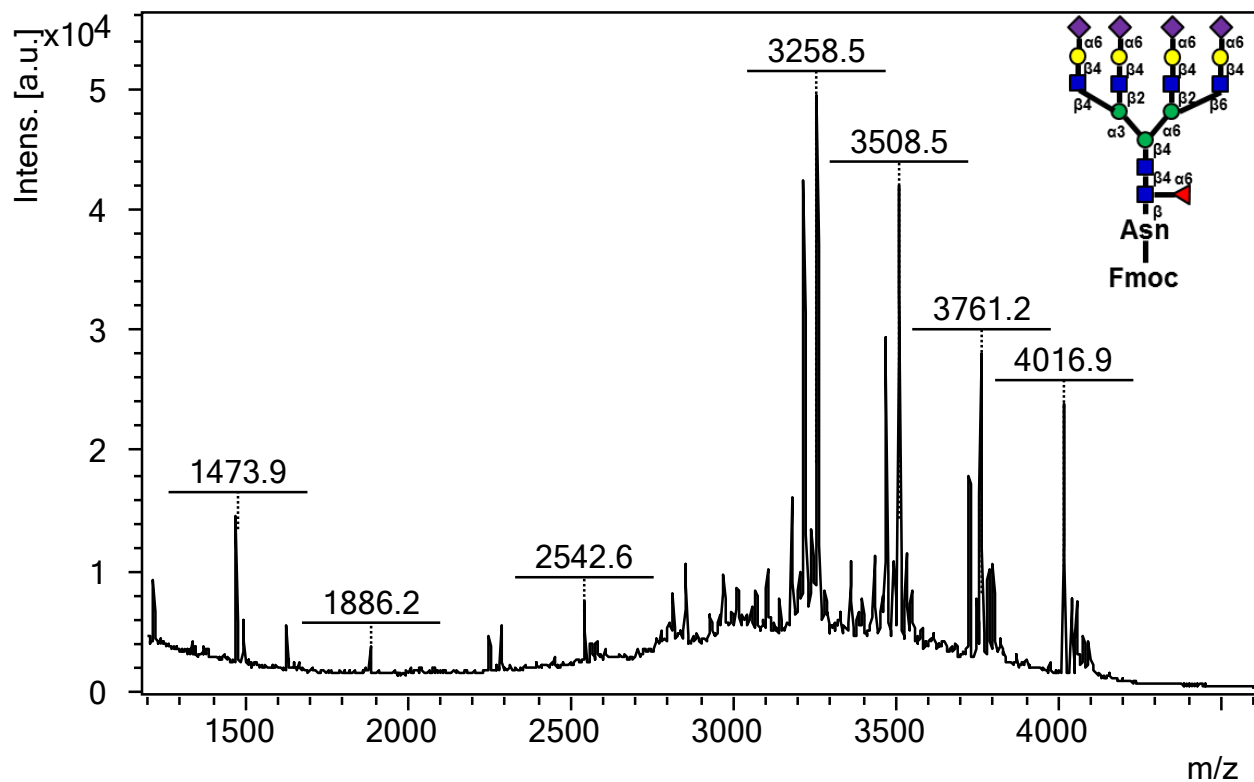
30a. 2,6SA3-224A3G3F-Asn-Fmoc



31a. 2,6SA3-226A3G3F-Asn-Fmoc



32a. 2,6SA4-A4G4F-Asn-Fmoc



33a. Man3-Asn-Fmoc

