

Dissecting the Interaction of FGF8 with Receptor FGFR1

 Lei Zhuang ¹, Monique Vogel ¹, Peter M. Villiger ² and Beat Trueb ^{1,*}
¹ Department for BioMedical Research, University of Bern, 3008 Bern, Switzerland; lei.zhuang@dbmr.unibe.ch (L.Z.); monique.vogel@dbmr.unibe.ch (M.V.)

² Department of Rheumatology, University Hospital, 3010 Bern, Switzerland; peter.villiger@insel.ch

* Correspondence: beat.trueb@dbmr.unibe.ch

Table S1. Primers used to prepare cDNA clones (5'-3')*.

Ig123	
Up	<u>CCGGATCCGGACAGGCCGAGATG</u>
Low	<u>CACGAATTCAGTGGTGATGGTGATGATGTGGGTCTGGCAGCACGGT</u>
Ig1	
Up:	<u>CCGGATCCGGACAGGCCGAGATG</u>
Low:	<u>CACGAATTCAGTGGTGATGGTGATGATGATCCAGCACGACGAGGGT</u>
Ig2	
Up:	<u>CCGGATCCGGACAGGCCGAGATG</u>
Low:	<u>CACGAATTCAGTGGTGATGGTGATGATGGATCACATCCACCTTGTA</u>
Ig2 overlap signal-Ig2	
Up:	GCCGCCGCCCGAG'ATGACATTAGCCCAGGGAAG
Low:	TGGGCTAATGTCAT'CTCGGGCGGCGGCGGC
Ig3	
Up:	<u>CCGGATCCGGACAGGCCGAGATG</u>
Low:	<u>CACGAATTCAGTGGTGATGGTGATGATGTGGGTCTGGCAGCACGGT</u>
Ig3 overlap signal-Ig3	
Up:	CGAGGCCCGCC'GTGATCCAGCGGACCCG
Low:	CCGCTGGATCACA'GGGGGCCTCGGGCGGC
Ig12	
Up:	<u>CACGAATTC</u> CCGGACAGGCCGAGATG
Low:	GA <u>AGGATCCT</u> CAGTGATGGTGATGGTGATGGGGTGGGATCACATCCACCTTGTA
Ig13	
Up:	<u>CACGAATTC</u> CCGGACAGGCCGAGATG
Low:	GA <u>AGGATCCT</u> CAGTGATGGTGATGGTGATGGGGTGGCAGCACGGTGAGGA
Ig13 overlap Ig1-Ig3	
Up:	AGCCAGCAGTGG'CAGCGGACCCGTTCCAAG
Low:	ACGGGTCCGCTG'CCACTGCTGGCTGGCGGG
Ig23	
Up:	<u>CACGAATTC</u> CCGGACAGGCCGAGATG
Low:	GA <u>AGGATCCT</u> CAGTGATGGTGATGGTGATGGGGTGGCAGCACGGTGAGGA
Ig23 overlap signal-Ig2	
Up:	GCCGCCGCCCGAG'ATGACATTAGCCCAGGGAAG
Low:	TGGGCTAATGTCAT'CTCGGGCGGCGGCGGC

* Underlined residues mark the restriction sites used for subcloning.

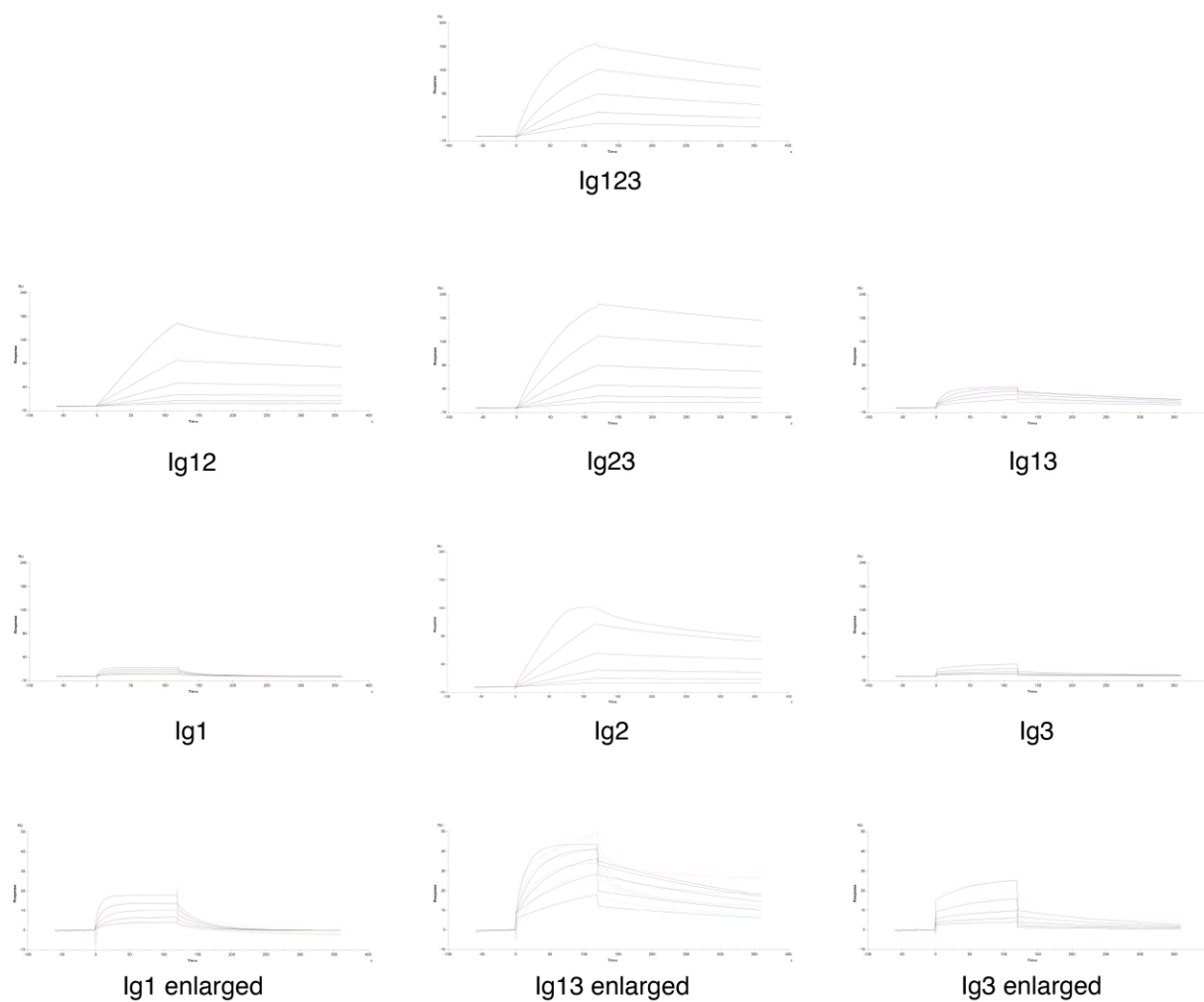


Figure S1: Kinetic fit of the binding data.