

## Supplementary Information

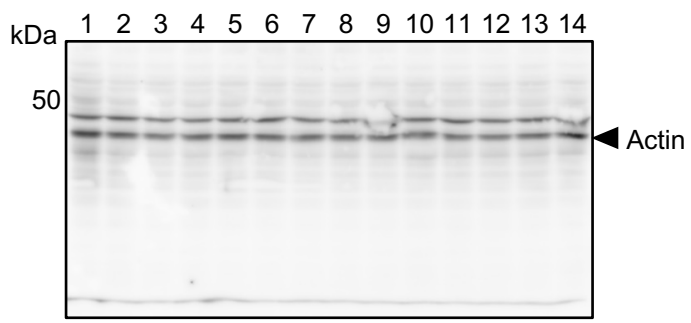
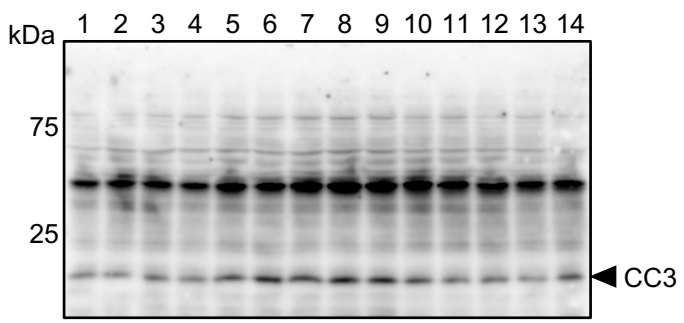
Mild electrical stimulation with heat shock attenuates renal pathology in adriamycin-induced nephrotic syndrome mouse model

**Keisuke Teramoto<sup>1,2</sup>, Yu Tsurekawa<sup>1,2</sup>, Mary Ann Suico<sup>1,3</sup>, Shota Kaseda<sup>1,2</sup>, Kohei Omachi<sup>1,2</sup>, Tsubasa Yokota<sup>1</sup>, Misato Kamura<sup>1,2</sup>, Mariam Piruzyan<sup>1,2</sup>, Tatsuya Kondo<sup>4</sup>, Tsuyoshi Shuto<sup>1,3</sup>, Eiichi Araki<sup>4</sup>, Hirofumi Kai<sup>1,2,3\*</sup>**

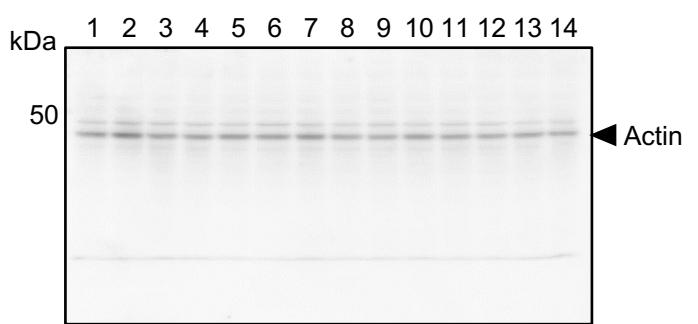
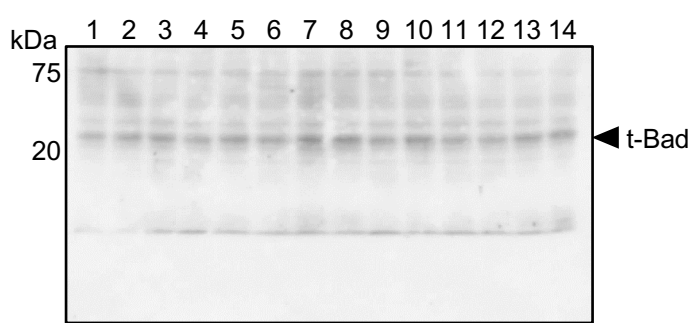
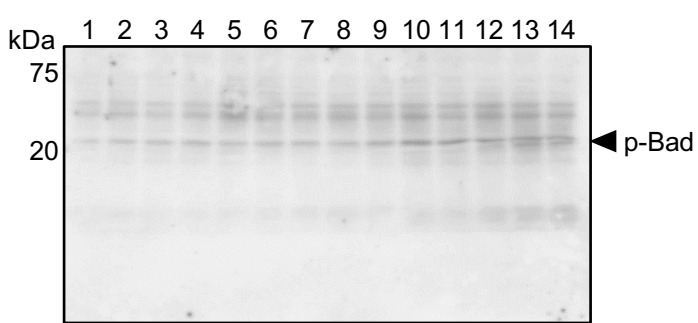
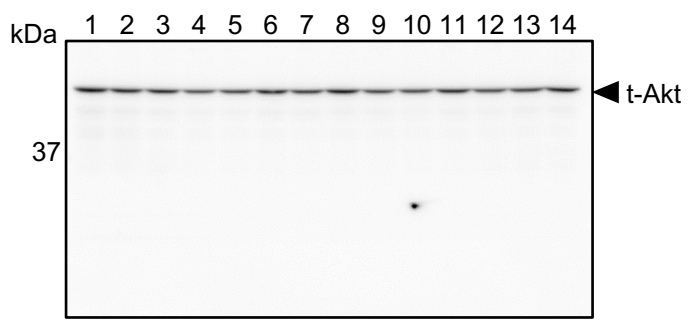
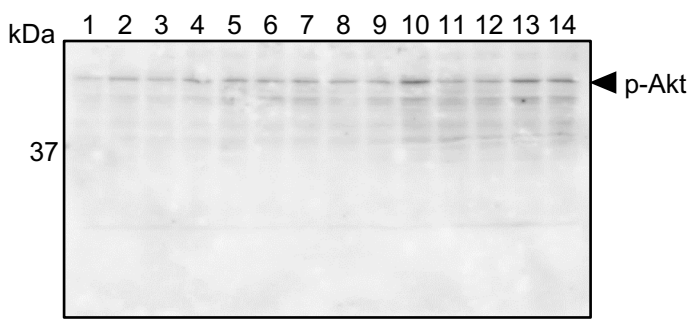
<sup>1</sup>Department of Molecular Medicine, Graduate School of Pharmaceutical Sciences, Kumamoto University, Kumamoto, Japan. <sup>2</sup>Program for Leading Graduate Schools “HIGO (Health life science: Interdisciplinary and Global Oriented) Program”, Kumamoto University, Kumamoto, Japan. <sup>3</sup>Global Center for Natural Resources Sciences, Faculty of Life Sciences, Kumamoto University, 5-1 Oe-Honmachi, Chuo-ku, Kumamoto City 862-0973, Kumamoto, Japan. <sup>4</sup>Department of Metabolic Medicine, Faculty of Life Sciences, Kumamoto University, 1-1-1 Honjo, Chuo-ku, Kumamoto City 860-8556, Kumamoto, Japan.

**Supplementary Figure 1.**

**Fig. 4c**



**Fig. 4d**



Lane  
1 – 4: Con  
5 – 9: ADR  
10 – 14: ADR+(MES+HS)

**Supplementary Figure 1.** The full-length blots for Figure 4c and 4d. The full-length blots for Figure 4c and d with the indicated antibodies. Actin was used as loading control. Samples were derived from the same experiment, and gels/blots were processed in parallel.

