

Expanded View Figures

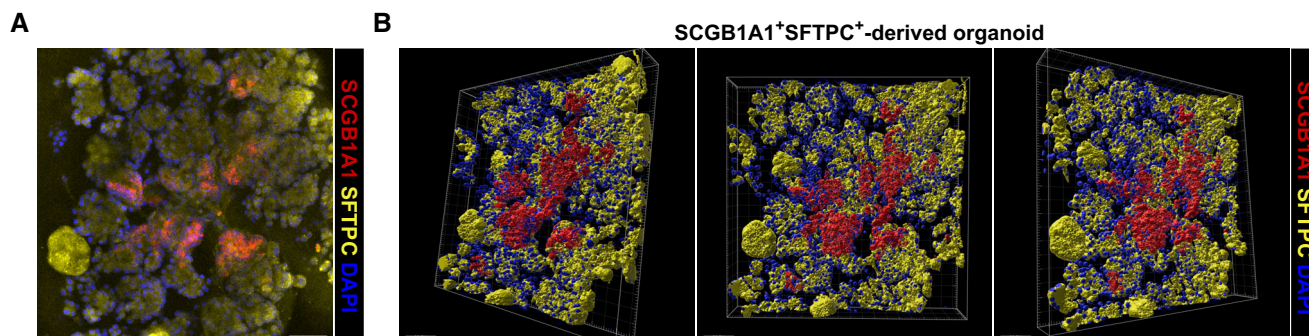


Figure EV1. 3D reconstruction of BALO depicts proximo-distal cell specification.

A, B Representative confocal picture (A) and 3D reconstruction (B) of a day 21 culture showing endogenous SCGB1A1 and SFTPC expression within BALO derived from EpCAM^{high}CD24^{low}Sca-1⁺SCGB1A1⁺SFTPC⁺ cells isolated from *Scgb1a1^{tmCherry}Sftpc^{YFP}* reporter mice. Scale bars represent 50 μ m.

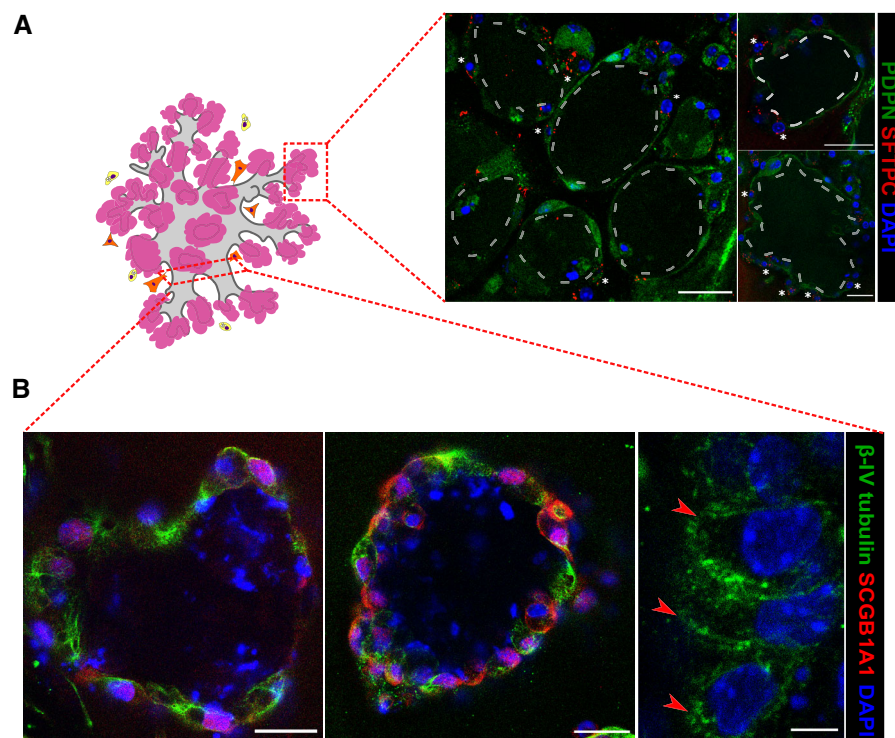


Figure EV2. BALOs express markers of differentiated airways and alveoli.

A, B Representative scheme and confocal images of the BALO alveolar-like (A) and airway-like (B) structures. (A) Representative image of AEC II SFTPC staining (white asterisks) and AEC I endogenous PDPN expression in day 28 BALO isolated from the lungs of *Pdpn^{GFP}* reporter mice. Scale bars represent 25 μ m. Dotted lines indicate the alveoli. (B) Representative fluorescence images of BALO's airway-like structures stained for β -IV tubulin⁺ ciliated cells (red arrowheads) and SCGB1A1⁺ club cells. Scale bars represent 25 μ m (left and middle) and 5 μ m (right).