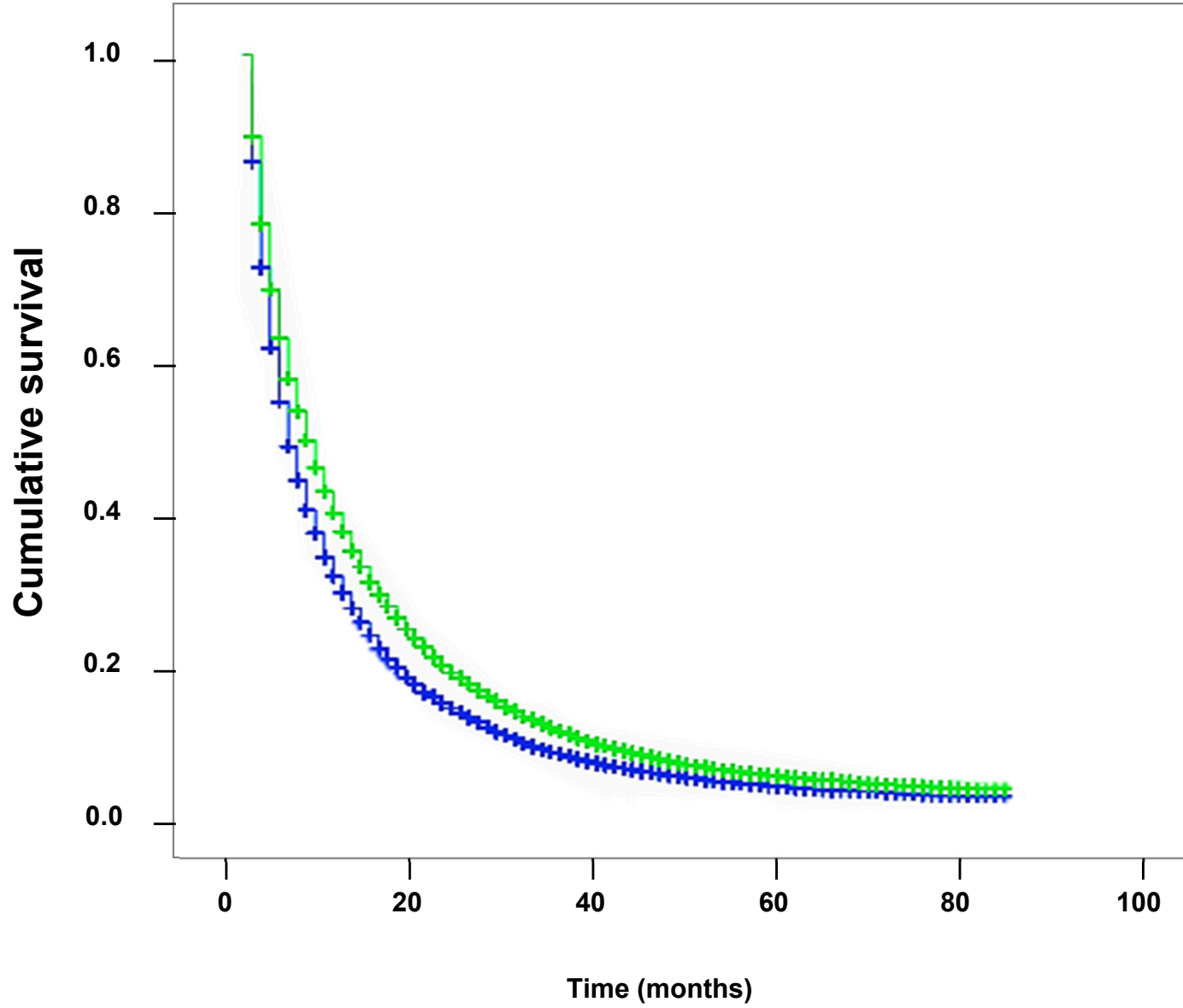


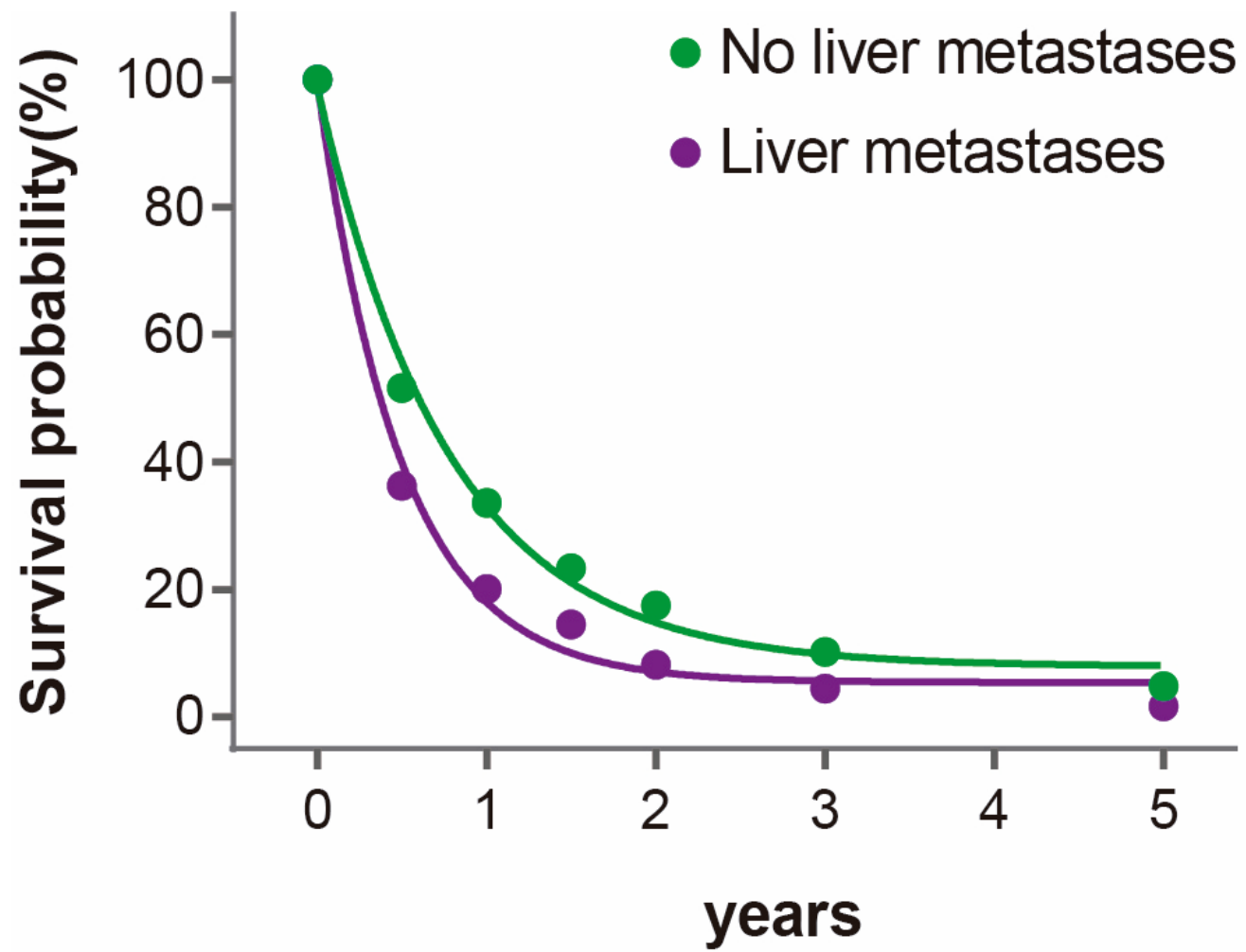
Race/ethnicity	mOS (months)	95% CI
White, non-Hispanic	6.00	5.89-6.11
Black, non-Hispanic	6.00	5.74-6.26
Asian/Pacific Islander	11.00	10.37-11.63
Hispanic	7.00	6.52-7.48
Indian/Alaska Native	5.00	3.70-6.30

Supplementary Fig. S1



Living arrangements	mOS (months)	95% CI
Alone	5.00	4.88-5.12
With others	7.00	6.83-7.17

Supplementary Fig. S2



Supplementary Fig. S3