

Supporting Information for

ORIGINAL ARTICLE

Lactoferrin-mediated macrophage targeting delivery and patchouli alcohol-based therapeutic strategy for inflammatory bowel diseases

Yuge Zhao^{a,b,c}, Yuting Yang^{a,b}, Jiaxin Zhang^{a,d}, Rong Wang^{a,b}, Biyun Cheng^{a,c}, Dipika Kalambe^{a,c}, Yingshu Wang^{a,d}, Zeyun Gu^{a,c}, Dongying Chen^{a,e,*}, Bing Wang^{a,*}, Yongzhuo Huang^{a,c,f,g,*}

^aState Key Laboratory of Drug Research, Shanghai Institute of Materia Medica, Chinese Academy of Sciences, Shanghai 201203, China

^bNanchang University College of Pharmacy, Nanchang 330006, China

^cUniversity of Chinese Academy of Sciences, Beijing 100049, China

^dShanghai University of Traditional Chinese Medicine, Shanghai 201203, China

^eLaboratory of Pharmaceutical Analysis, Shanghai Institute of Materia Medica, Chinese Academy of Sciences, Shanghai 201203, China

^fNMPA Key Laboratory for Quality Research and Evaluation of Pharmaceutical Excipients, Shanghai 201203, China

^gZhongshan Branch, the Institute of Drug Research and Development, Chinese Academy of Sciences, Zhongshan 528437, China

Running title: Macrophage-targeting delivery of patchouli alcohol for IBD treatment

*Corresponding authors. Tel.: +86 21 20231981 (Yongzhuo Huang); Tel.: +86 21 20231000 ext 1403 (Bing Wang); Tel.: +86 21 50806053 (Dongying Chen).

E-mail addresses: yzhuang@simm.ac.cn (Yongzhuo Huang), bwang@simm.ac.cn (Bing Wang), dychen@simm.ac.cn (Dongying Chen).

Table S1 Characterization of the liposomes (mean±SD, $n = 3$).

Category	PDI	DE (%)	DL (%)
Lipo	0.19±0.02	74.8±1.4	4.7±0.1
LF-lipo	0.20±0.02	64.2±1.8	3.8±0.1

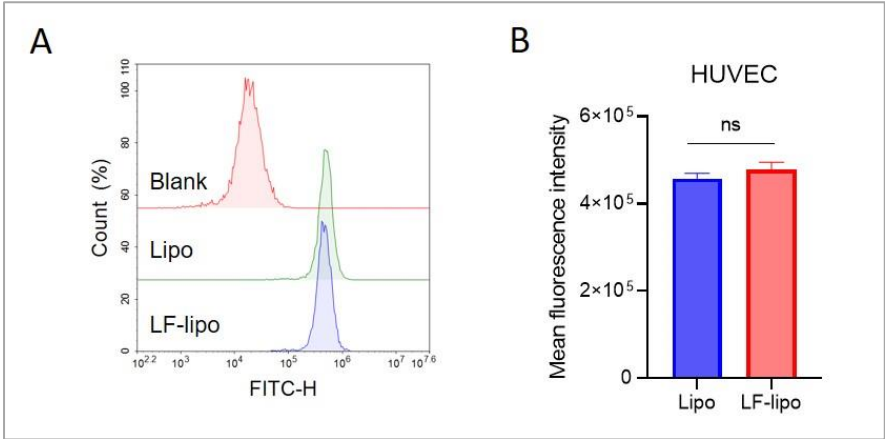


Figure S1 The uptake of Lipo and LF-lipo in HUVEC cells that poorly expressed LRP-1 (mean \pm SD, $n=3$; ns, no significance).

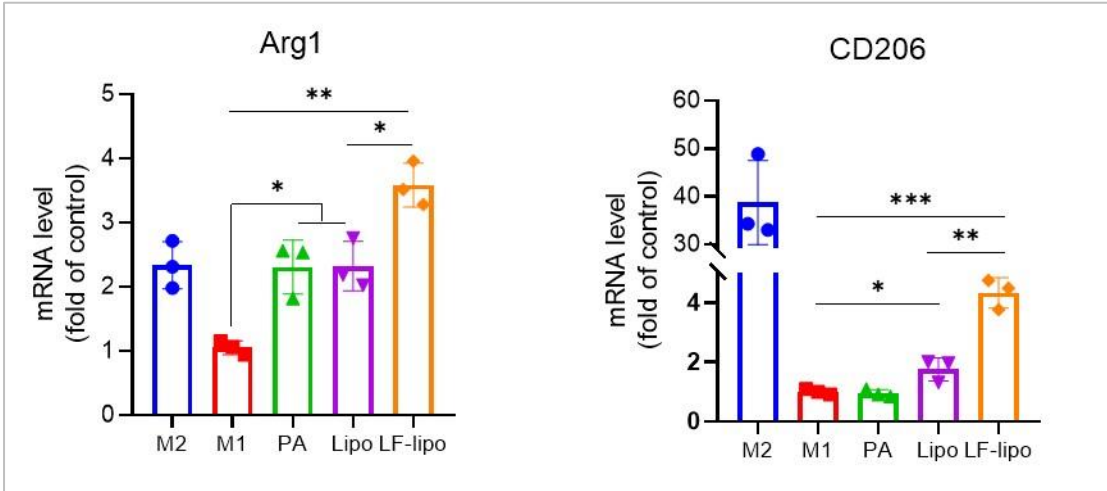


Figure S2 The mRNA levels of Arg1 and CD206 in M1 Φ after treatment (mean \pm SD, $n = 3$, * $P < 0.05$, ** $P < 0.01$, *** $P < 0.001$).

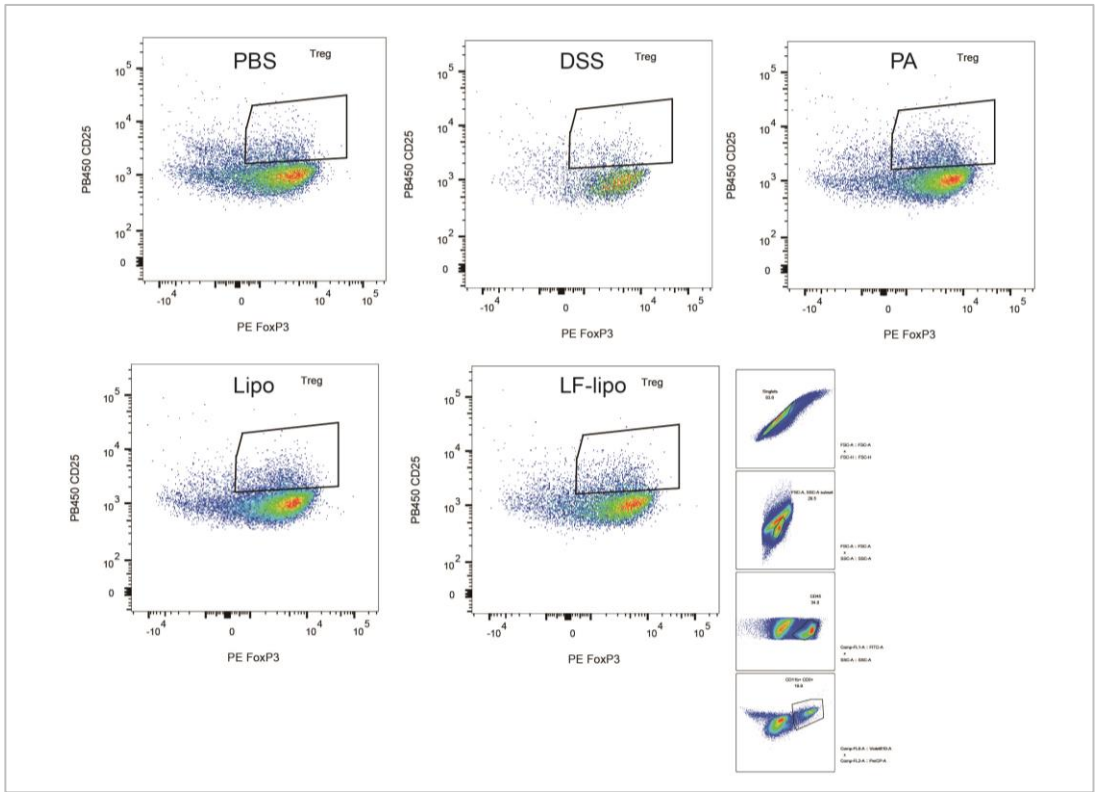


Figure S3 Flow cytometric assay results of Treg cells in the inflamed colon tissues after treatment.

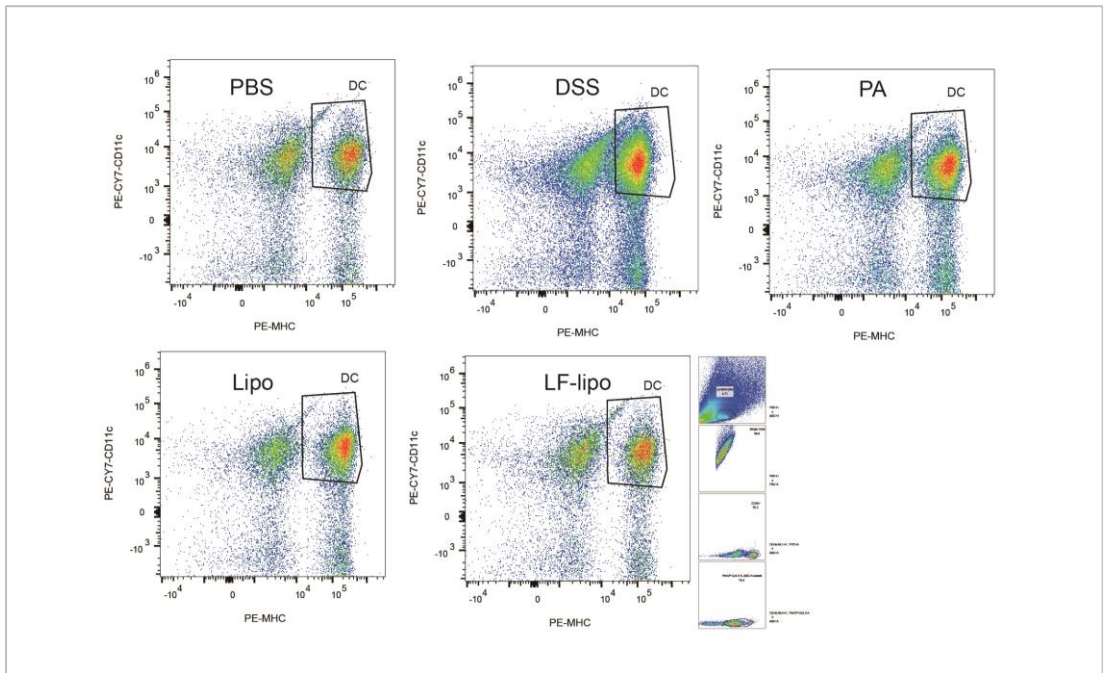


Figure S4 Flow cytometry results of dendritic cells (DCs) in the inflamed colon tissues after treatment.

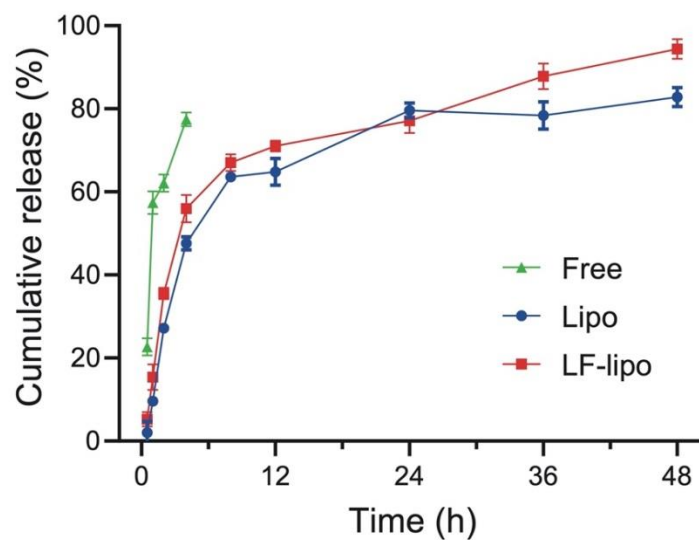


Figure S5 *In-vitro* drug release results in a medium containing 20% ethanol. The drug release was fast at a release medium containing a high concentration of ethanol that could cause the destruction of liposomes (mean \pm SD, $n = 3$).