

Barrow Neurological Institute holds the copyright to figure IM 23428-01 to be used in the manuscript by Hajime Furukawa, Kosuke Wada, Yoshiteru Tada, Atsushi Kuwabara, Hiroki Sato, Jinglu Ai, Michael T. Lawton and Tomoki Hashimoto entitled “Mast cell promotes the development of intracranial aneurysm rupture” for possible publication in *Stroke*. Permission is granted for print publication and for corresponding electronic publication of the manuscript and for all compilations that include this manuscript in its original form. Permission is granted with distribution rights in all languages throughout the world. The permission is subject to the use of a standard credit line on the same page where our figure(s) will appear. Permission is also granted to use the figure(s) for the Journal cover or for promotion of the issue or Journal.

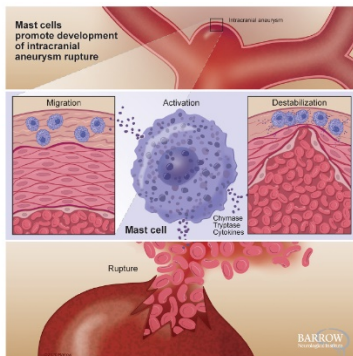
**“Used with permission from Barrow Neurological Institute, Phoenix, Arizona”**

**PLEASE NOTE:** Permission to use this material in other forms and for other uses requires a separate permission request. Permission to distribute or sell the figures and/or videos independent of the original manuscript and corresponding electronic publication of the manuscript requires a separate permission request. When submitting a request for other uses, please return a copy of this approved permission request to use this material together with the name, anticipated publication date, and tentative price of the other format.

*Cindy Giljames*

**Cindy Giljames, Production Assistant**  
Neuroscience Publications  
Barrow Neurological Institute

Date: Sept 4, 2020



im 23428-01.tif