

Figure S1. Mitophagy is induced in non-apoptotic cells but not in apoptotic cells in response to LPS treatment.

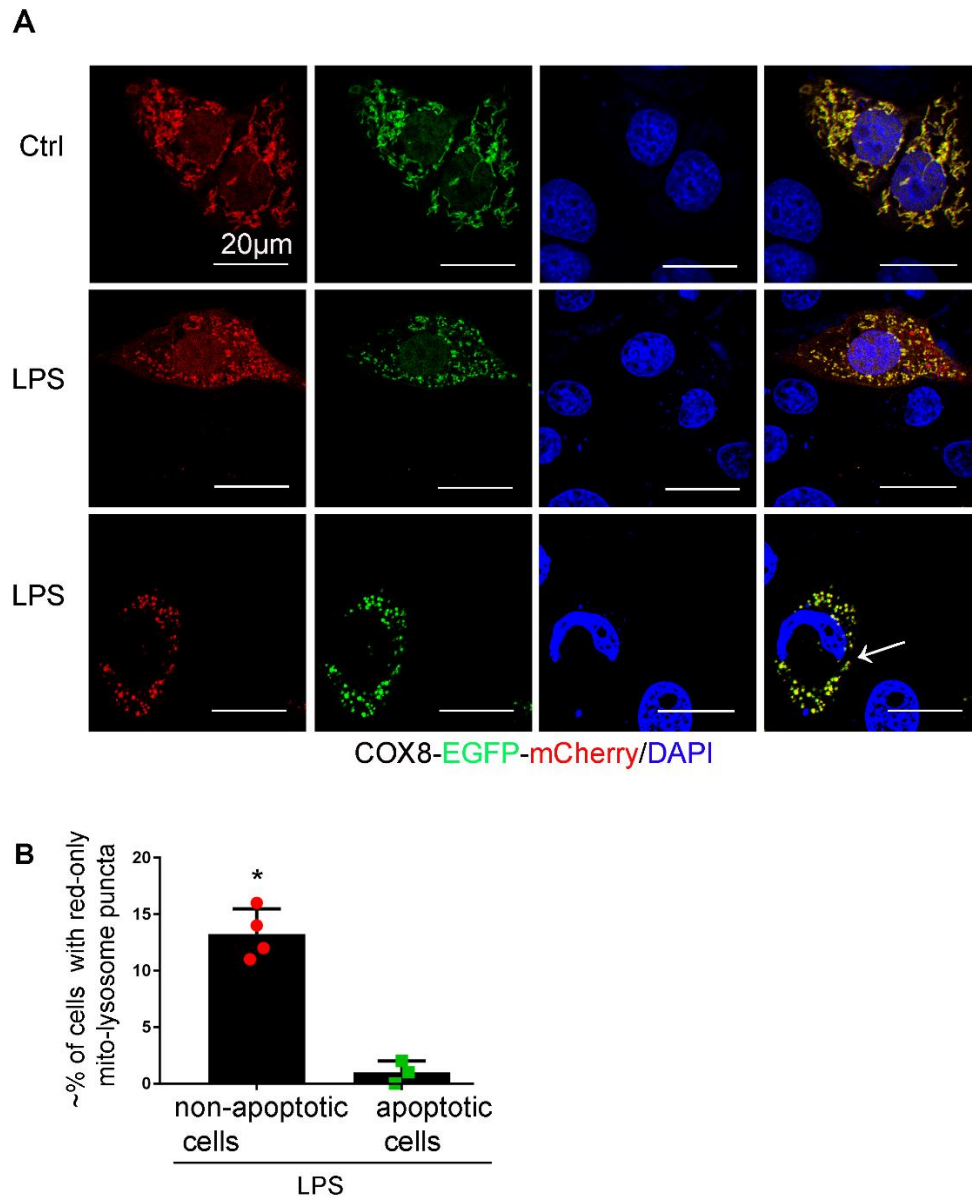


Figure S1. Mitophagy is induced in non-apoptotic cells but not in apoptotic cells following LPS treatment. RPTC cells were transiently transfected with COX8-EGFP-mCherry plasmids, and at 8 hours after transfection, the cells were incubated with/without LPS for 24 hours. The cells were then fixed and stained with DAPI to label nucleus (blue) before confocal microscopy analysis. (A) Representative images. White arrow indicates apoptotic cells. (B) Quantification of cells with red-only puncta. Data in B is expressed as mean \pm SD. $n \geq 3$. * $P < 0.001$ vs. apoptotic cells-LPS group.

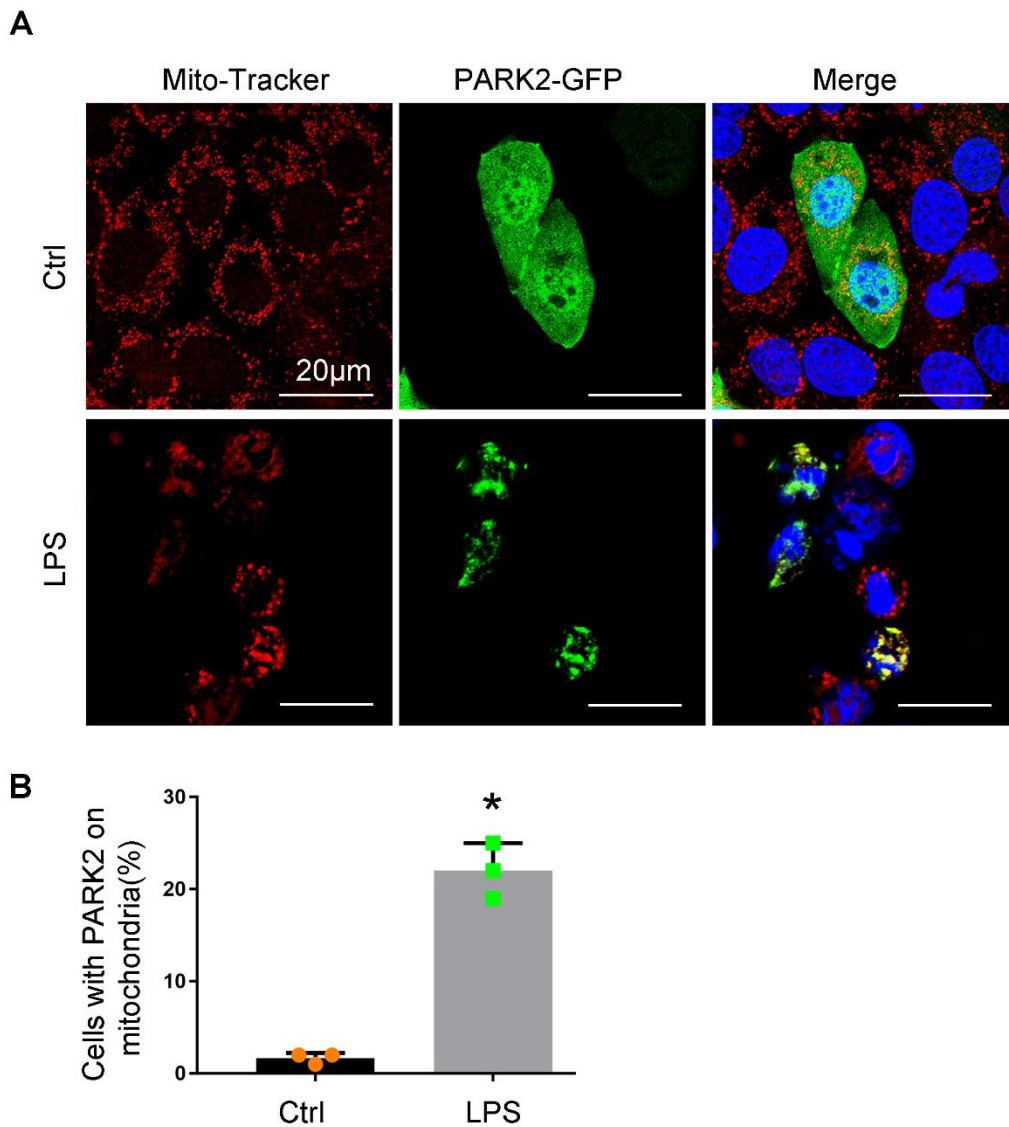
Figure S2. LPS induces mitochondrial translocation of PARK2 in RPTCs.

Figure S2. LPS induces mitochondrial translocation of PARK2 in RPTCs. RPTC cells were transfected with GFP-PARK2, and at 8 hours after transfection, the cells were incubated with/without LPS for 24 hours. The cells were stained with Mito-Tracker Red FM (red mitochondria) and DAPI (blue nuclei) before confocal microscopy. (A) Representative images. (B) Quantification of mitochondrial translocation of PARK2. The percentage of cells with the colocalization between GFP-PARK2 and Mito-Tracker was analyzed. Scale bar: 20µm. Data in B is expressed as mean \pm SD. n = 3. *P < 0.001, vs. the control group.

Figure S3. Knockdown of PINK1-PARK2 decreases mitochondrial ubiquitination during LPS treatment in RPTCs.

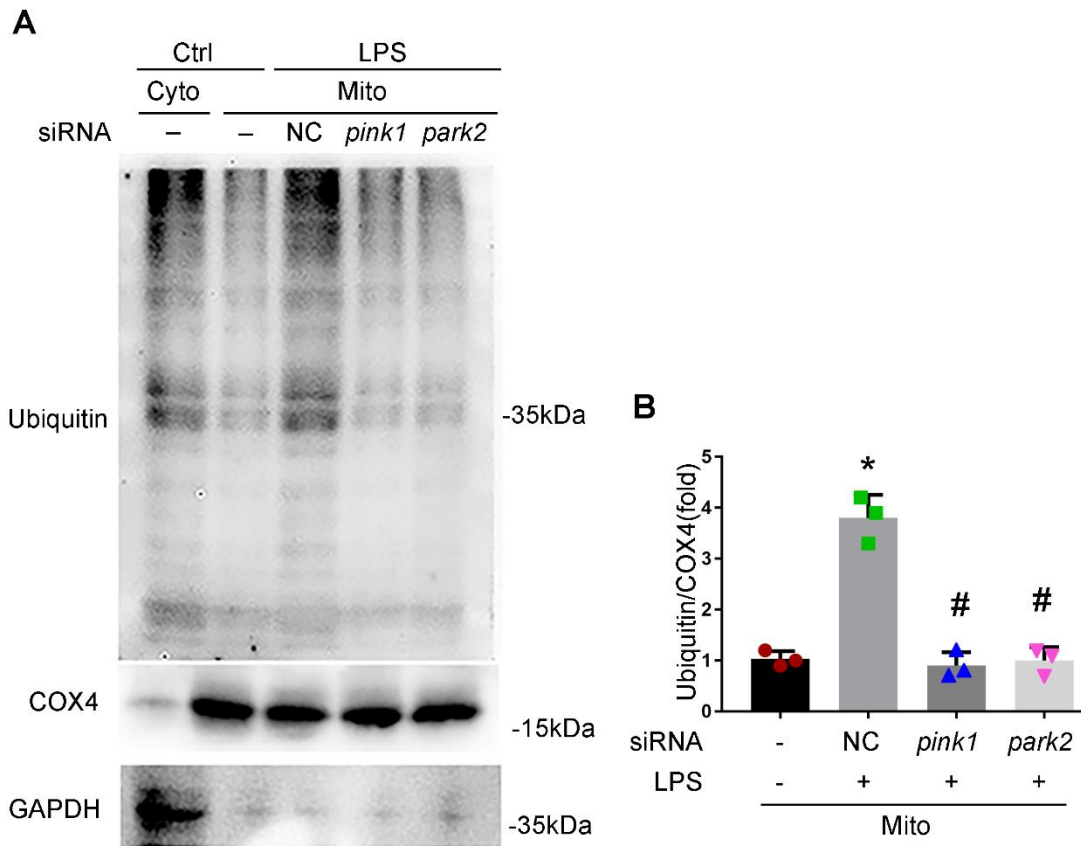


Figure S3. Suppression of *Pink1* or *Park2* expression inhibits LPS-induced mitochondrial protein ubiquitination in RPTCs. RPTC cells were transfected with negative control siRNA (NC), *Pink1* siRNA or *Park2* siRNA, and at 48 hours after transfection, the cells were incubated with/without LPS for 24 hours. The proteins from whole cell lysates, cytosolic (cyto) fractions and mitochondrial (mito) fractions were subjected to immunoblot analysis of ubiquitinated proteins, COX4 (mitochondrial marker), and GAPDH (cytosolic marker). (A) Representative blots. (B) Densitometry of ubiquitinated proteins. Mean \pm SD. n = 3. *P < 0.001 vs. control group. #P < 0.001 vs. NC siRNA-LPS group.