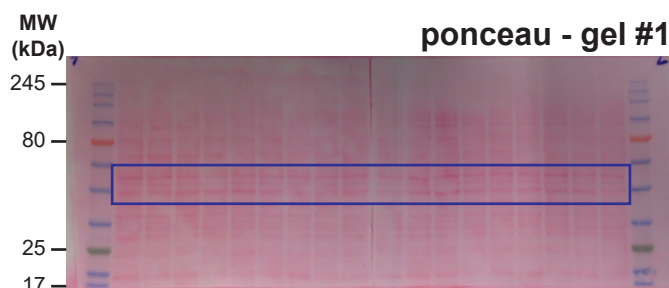
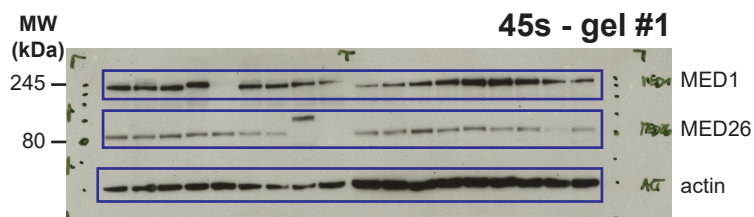
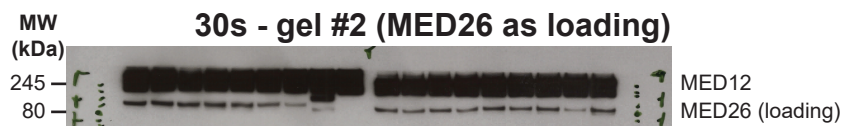
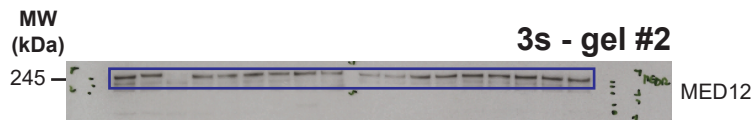


Source Data Extended Data Fig. 1

a. uncropped blots for Extended Data Fig. 1b



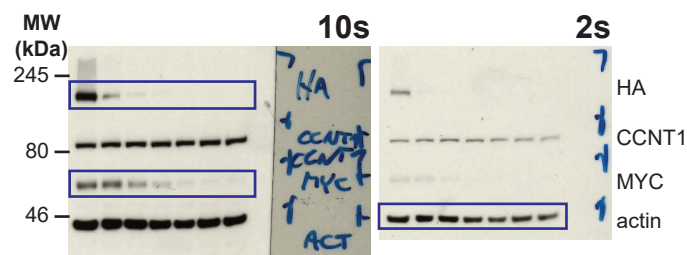
molecular weight standard:
NEB Color Protein Standard broad range (NEB #P7712)

-) Manual marks indicate cut gel pieces incubated with the respective antibody.

-) Note that for Extended Data Fig. 1b we developed two 10-well gels/membranes on the same film (see ponceau).

-) Blue boxes indicate parts of the blot displayed in the figure.

c. uncropped blots for Extended Data Fig. 1g



b. uncropped blots for Extended Data Fig. 1c

