
Supplementary information

An intramembrane chaperone complex facilitates membrane protein biogenesis

In the format provided by the authors and unedited

Supplementary Figure 1. Uncropped autoradiographs and gels.

Shown are all gels prior to cropping for display in the figures.

Instances where full gels are shown in the figure are not replicated here. All IVT reactions were controlled for loading by coomassie staining and visualisation of endogenous lysate proteins. All IPs were controlled for recovery and loading by coomassie staining and visualisation of the antibody. Loading controls for cell lysates are displayed within the figure and were also controlled by visualizing the stained gel or blot.

Fig. 1a Sec61 α IPs

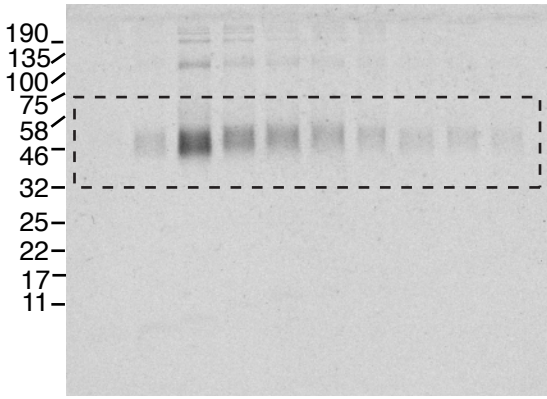


Fig. 1d

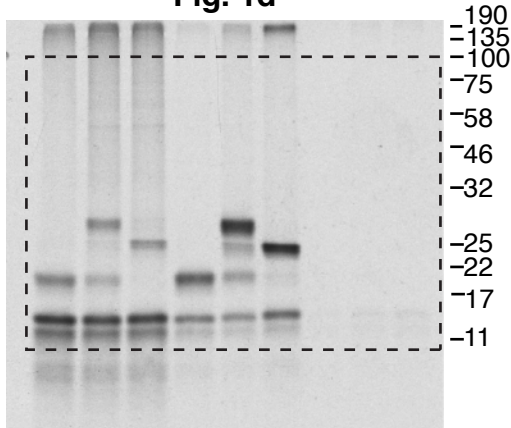


Fig. 1f

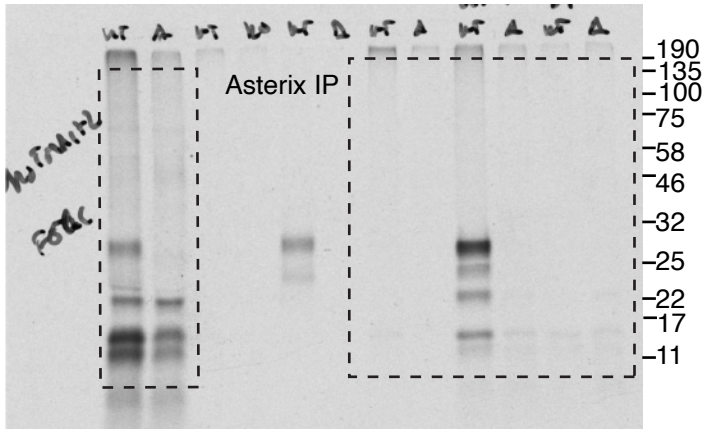


Fig. 2b

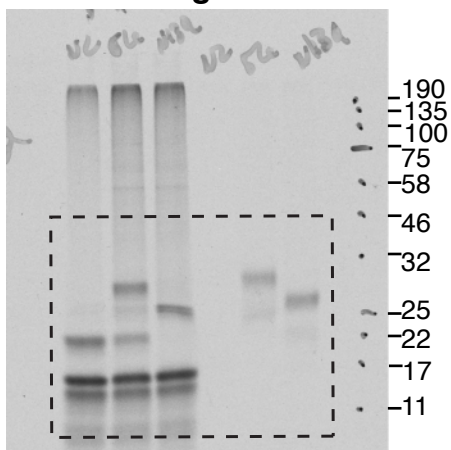


Fig. 1b

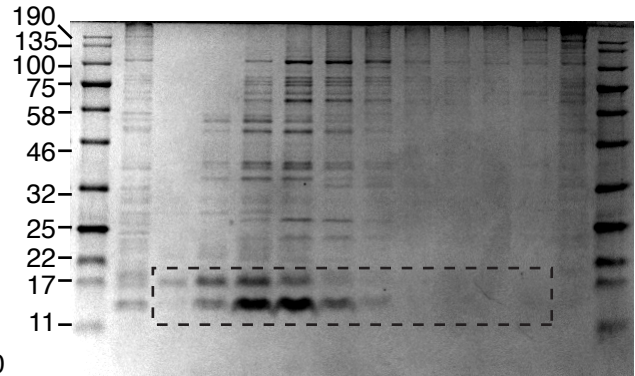
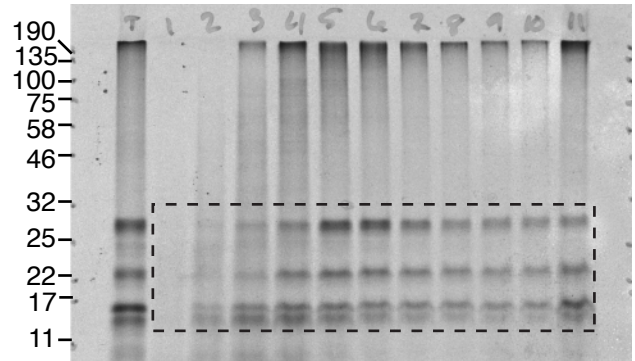


Fig. 1e

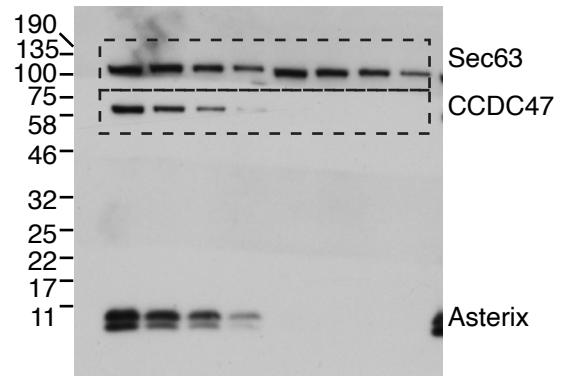


Fig. 2a

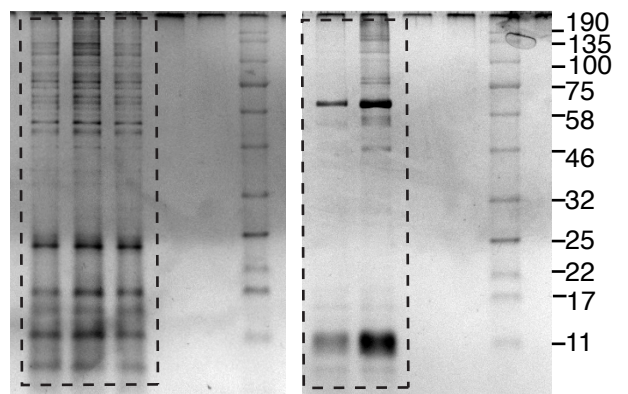


Fig. 2d

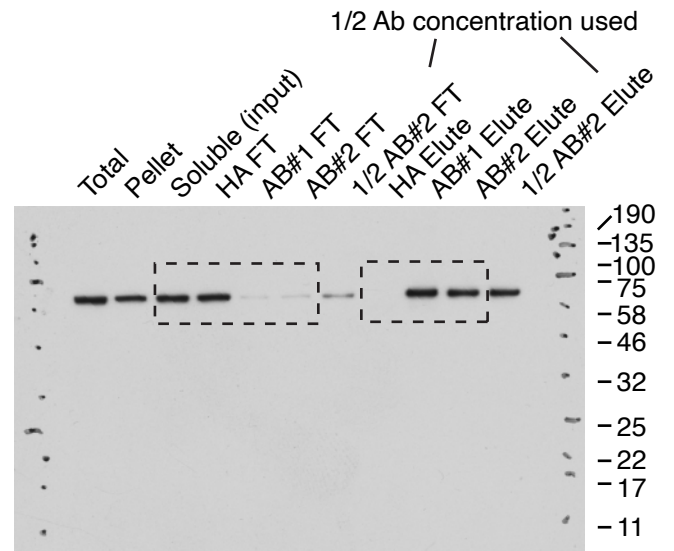


Fig. 2c

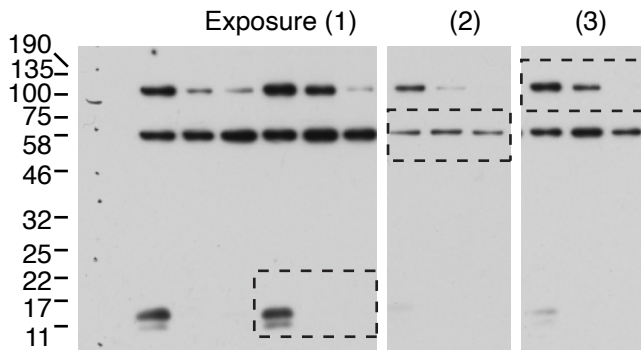


Fig. 4b (upper panel)

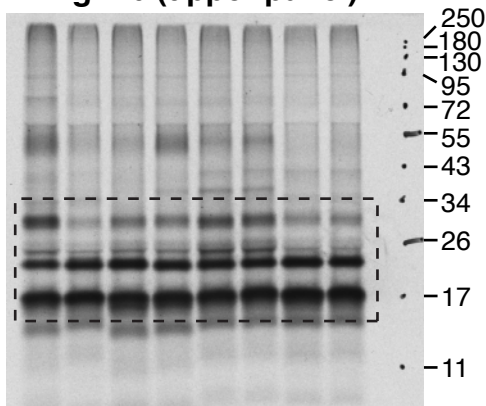


Fig. 2d

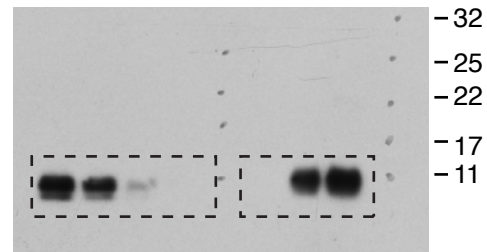


Fig. 4e

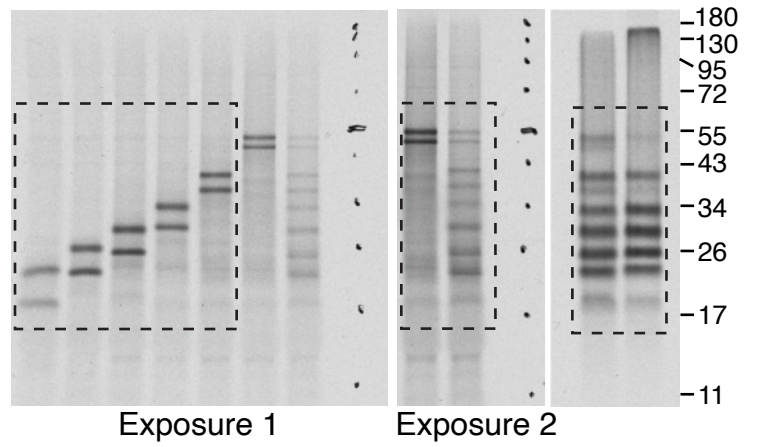


Fig. 4c

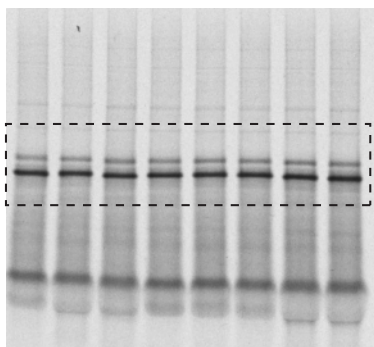
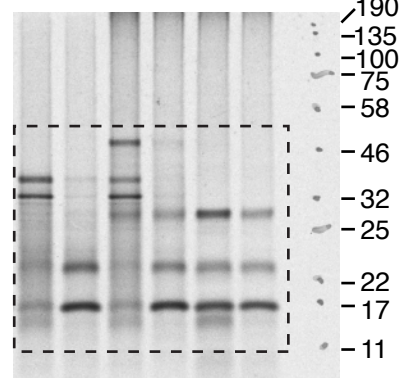
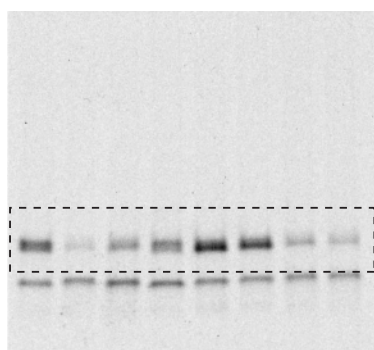
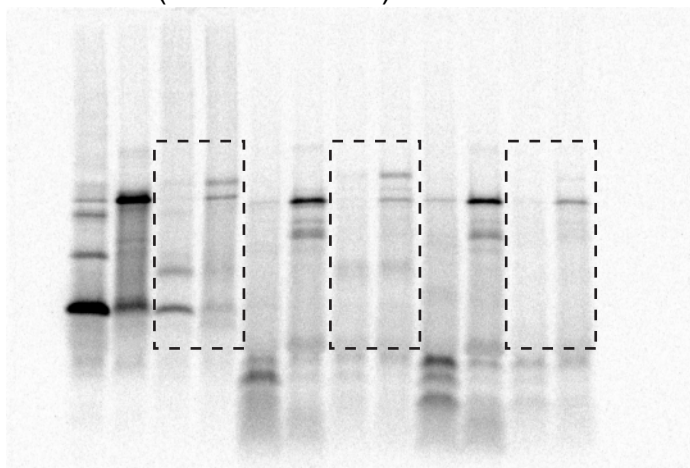


Fig. 4d

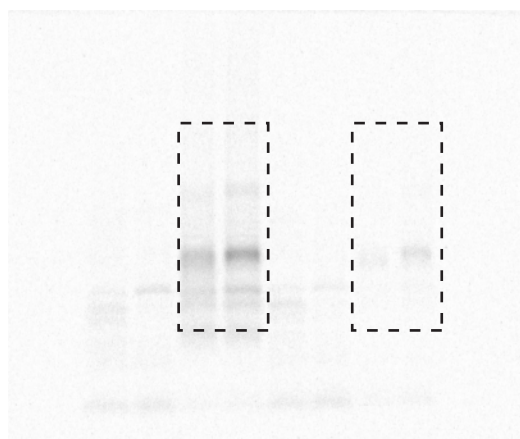


Phosphor Screen
(No MW Ladder)



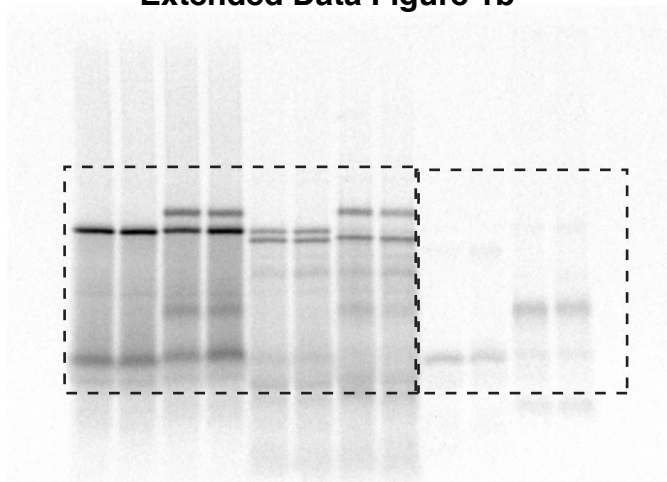
Extended data Figure 1c

Phosphor Screen
(No MW Ladder)

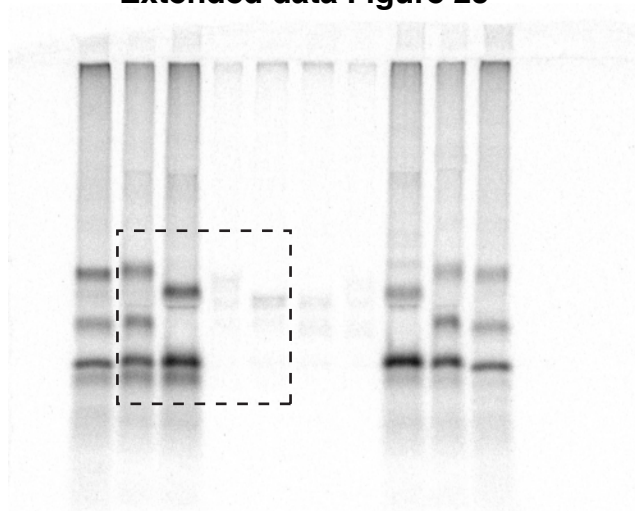


Phosphor Screen
(No MW Ladder)

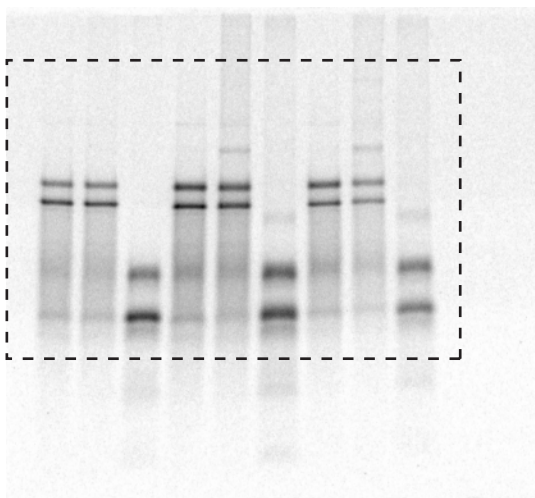
Extended Data Figure 1b



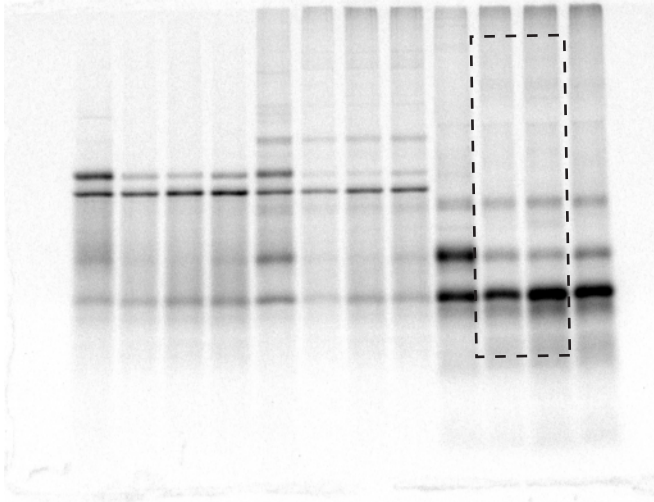
Phosphor Screen
(No MW Ladder)
Extended data Figure 2c



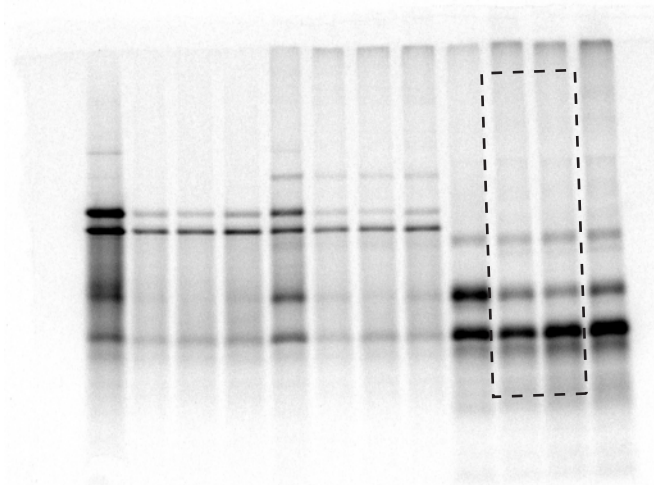
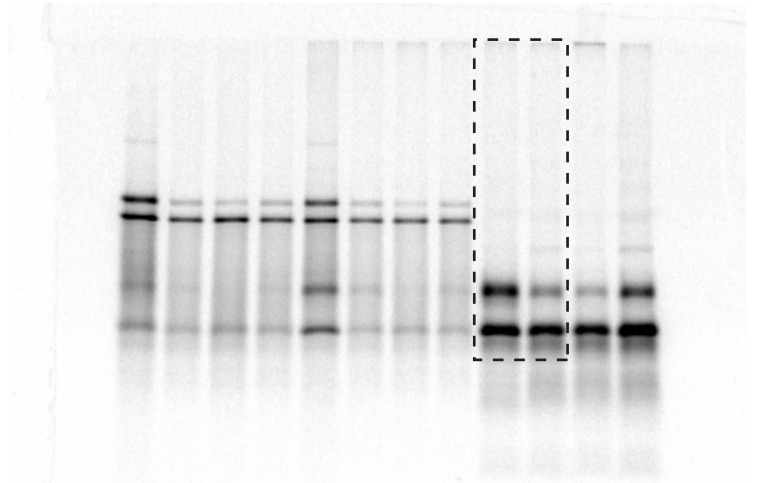
Extended data Figure 2d



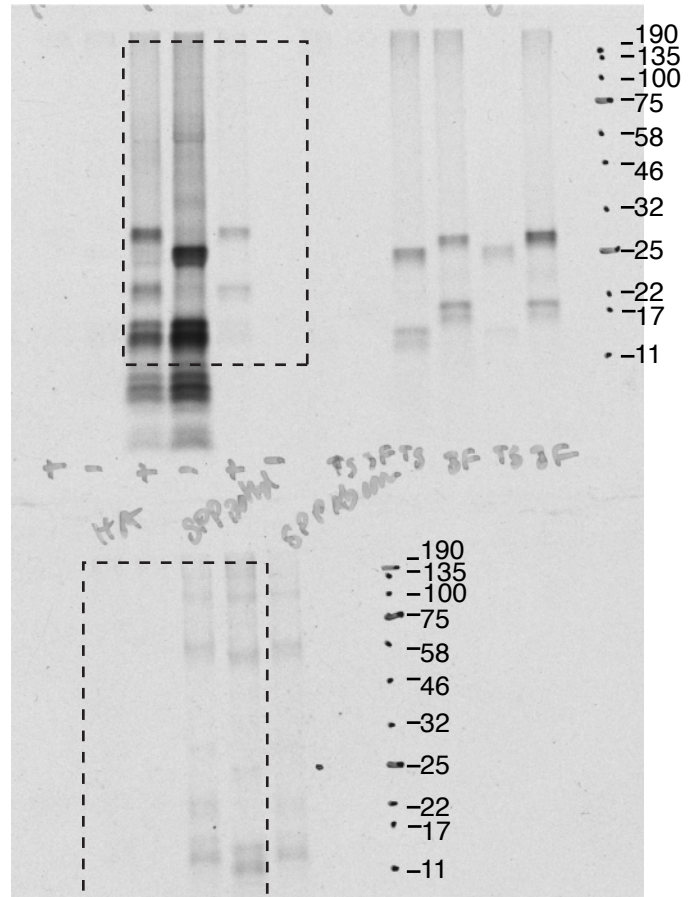
Extended data Figure 2e



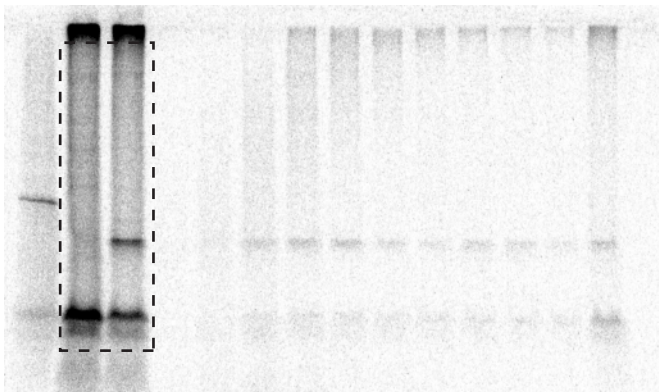
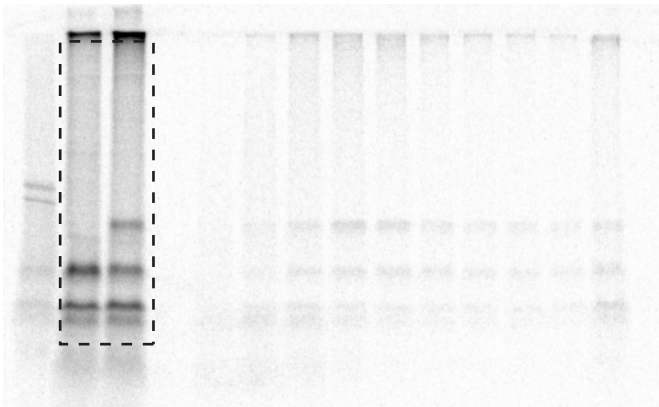
Phosphor Screen
(No MW Ladder)



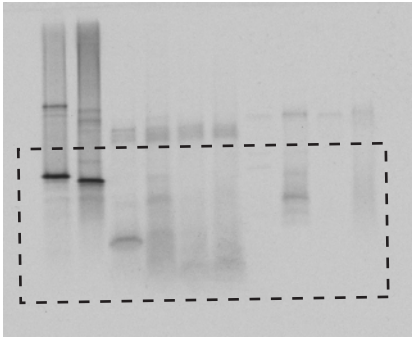
Extended data Figure 3a and 3b



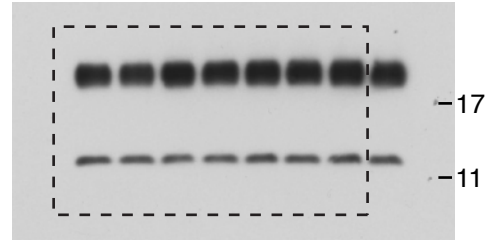
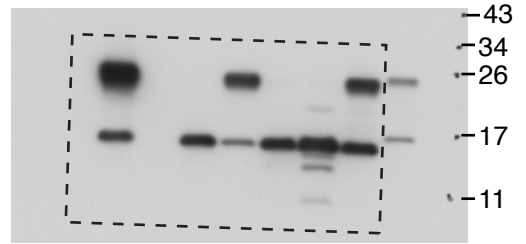
Extended data Figure 3a



Extended data Figure 4c

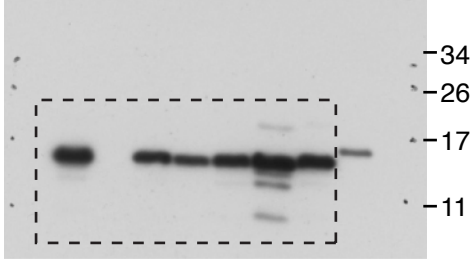


Extended data Figure 4e

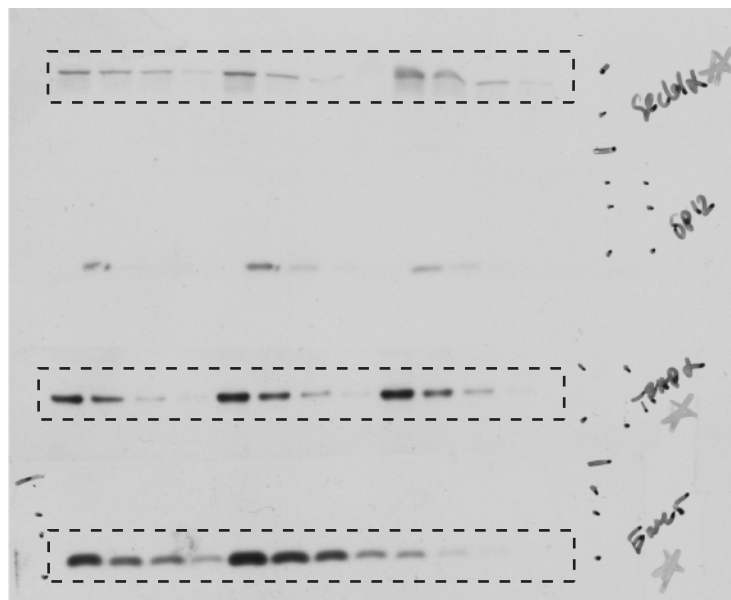
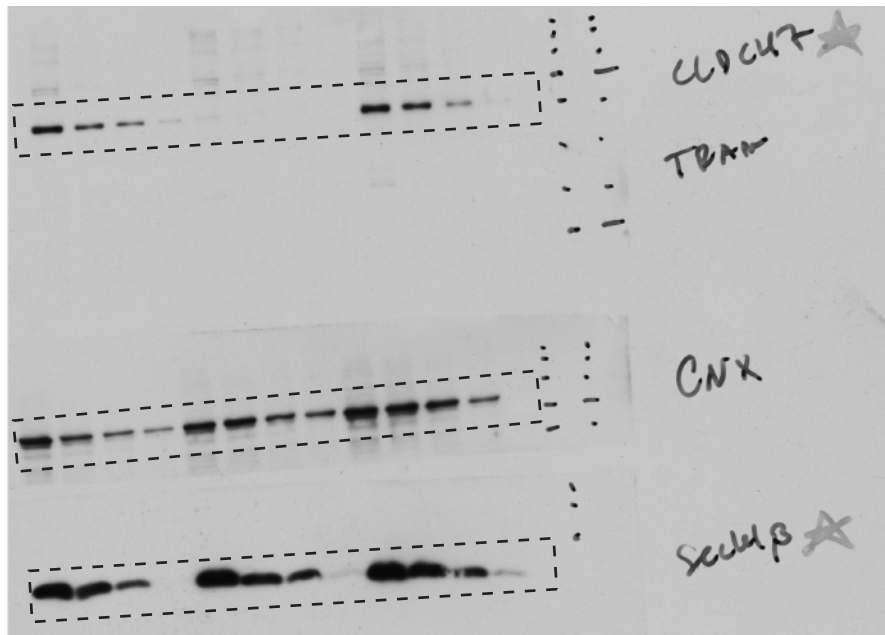


Separate Gels

Extended data Figure 4e



Extended data Figure 8



Extended data Figure 8 continued

