

**Fig. 4e**  
**JBP / SM**

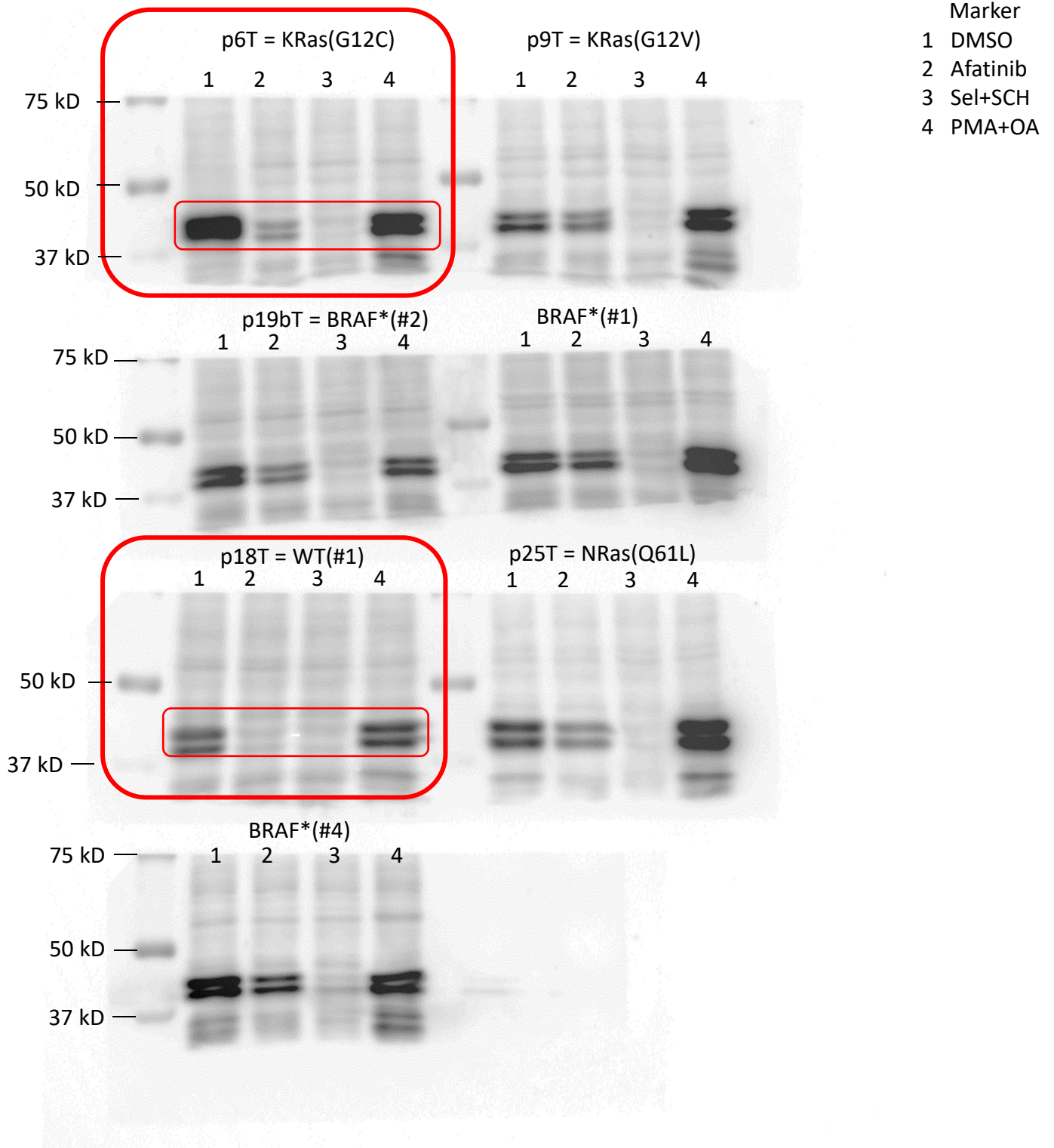
p18T = WT(#1)  
and  
p6T = p9T\_G12C:

Same as Extended Data Fig. 7h

RAW blots (as scanned)

phospho-ERK

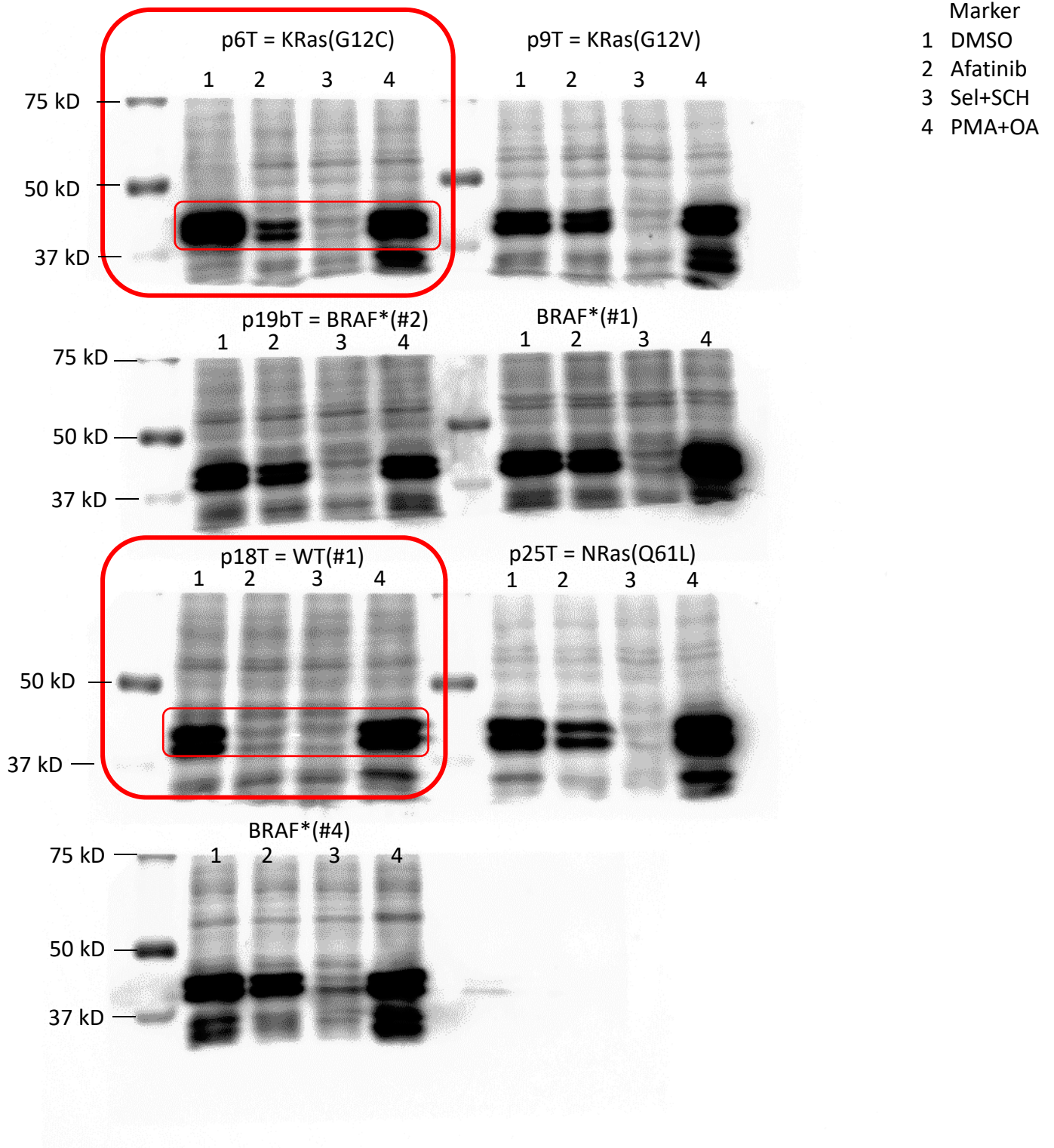
**Fig. 4e**  
**(SM)**



RAW blots (as scanned)

phospho-ERK

**Fig. 4e**  
**(SM)**

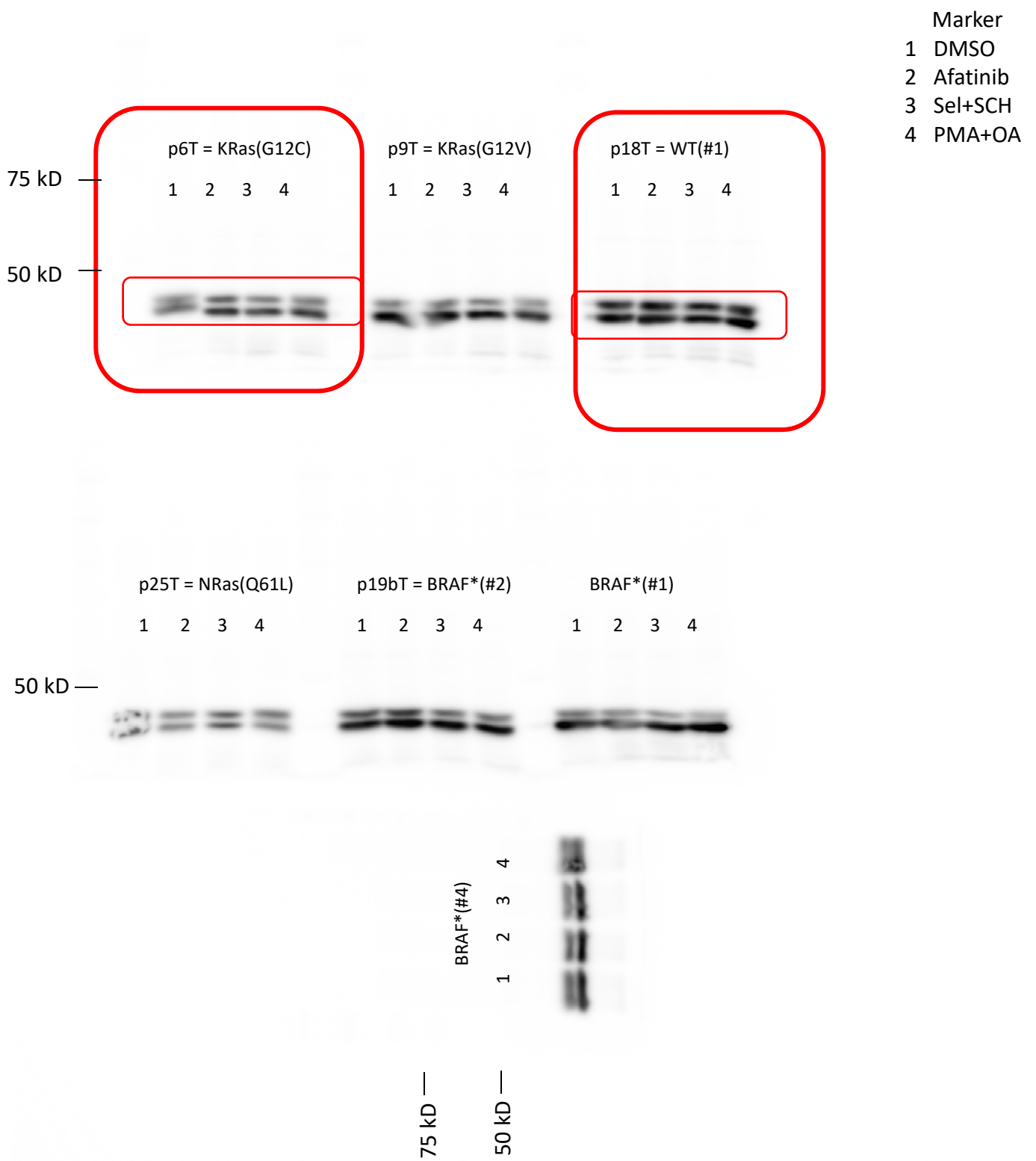


signal cranked up

RAW blots (as scanned)

total ERK

**Fig. 4e**  
**(SM)**

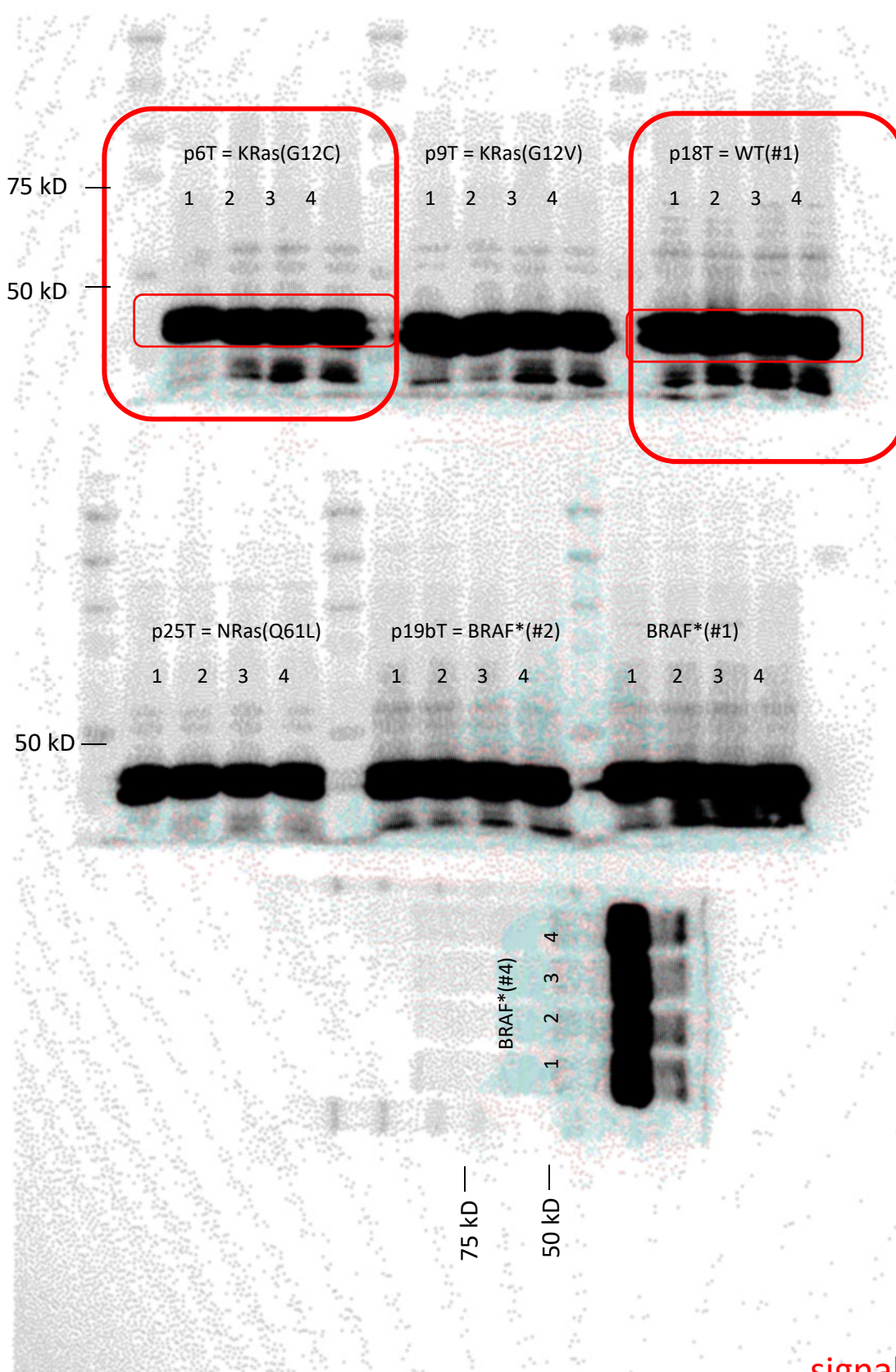




RAW blots (as scanned)

total ERK

**Fig. 4e**  
**(SM)**



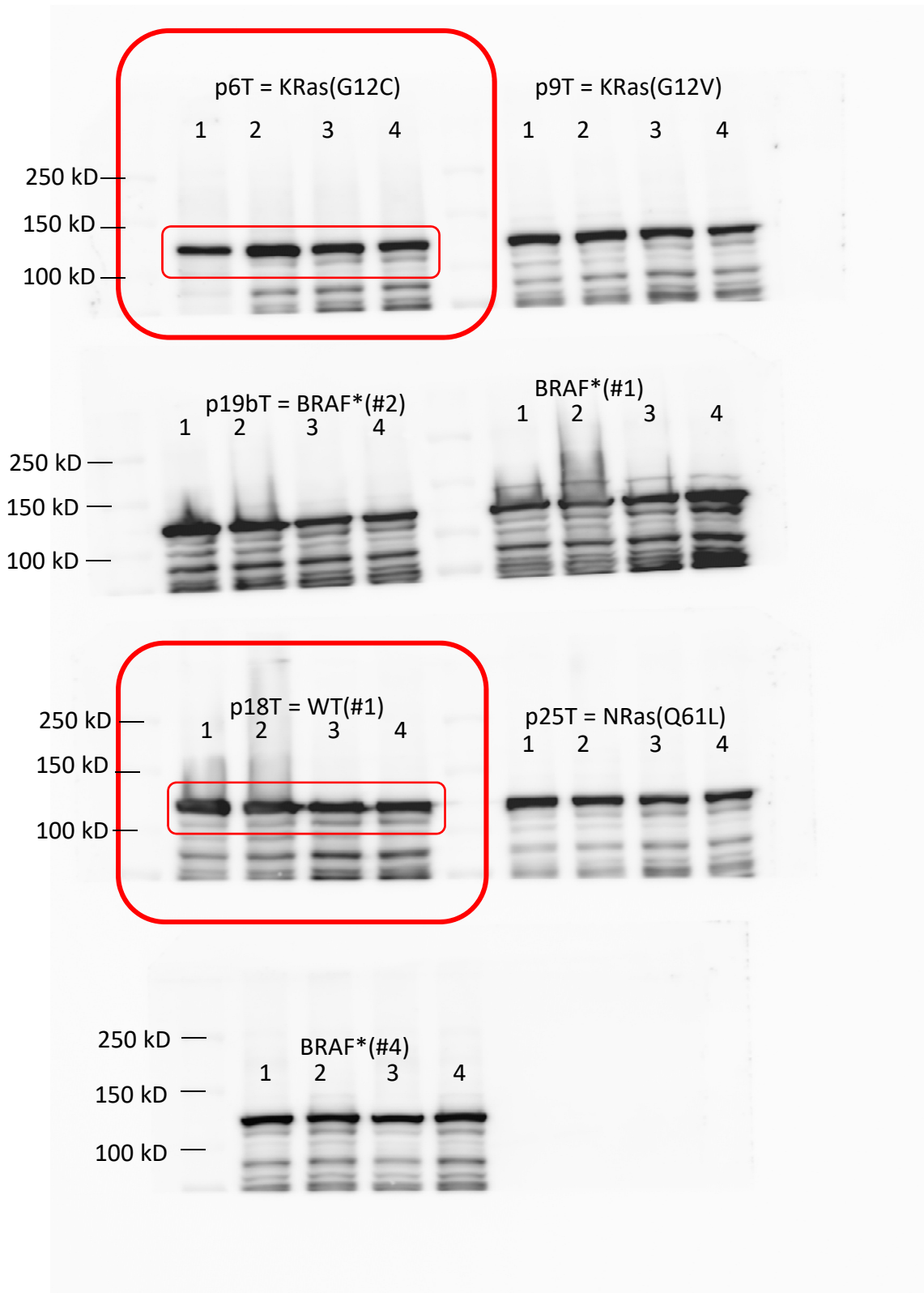
- Marker
- 1 DMSO
  - 2 Afatinib
  - 3 Sel+SCH
  - 4 PMA+OA

signal cranked up

RAW blots (as scanned)

Vinculin

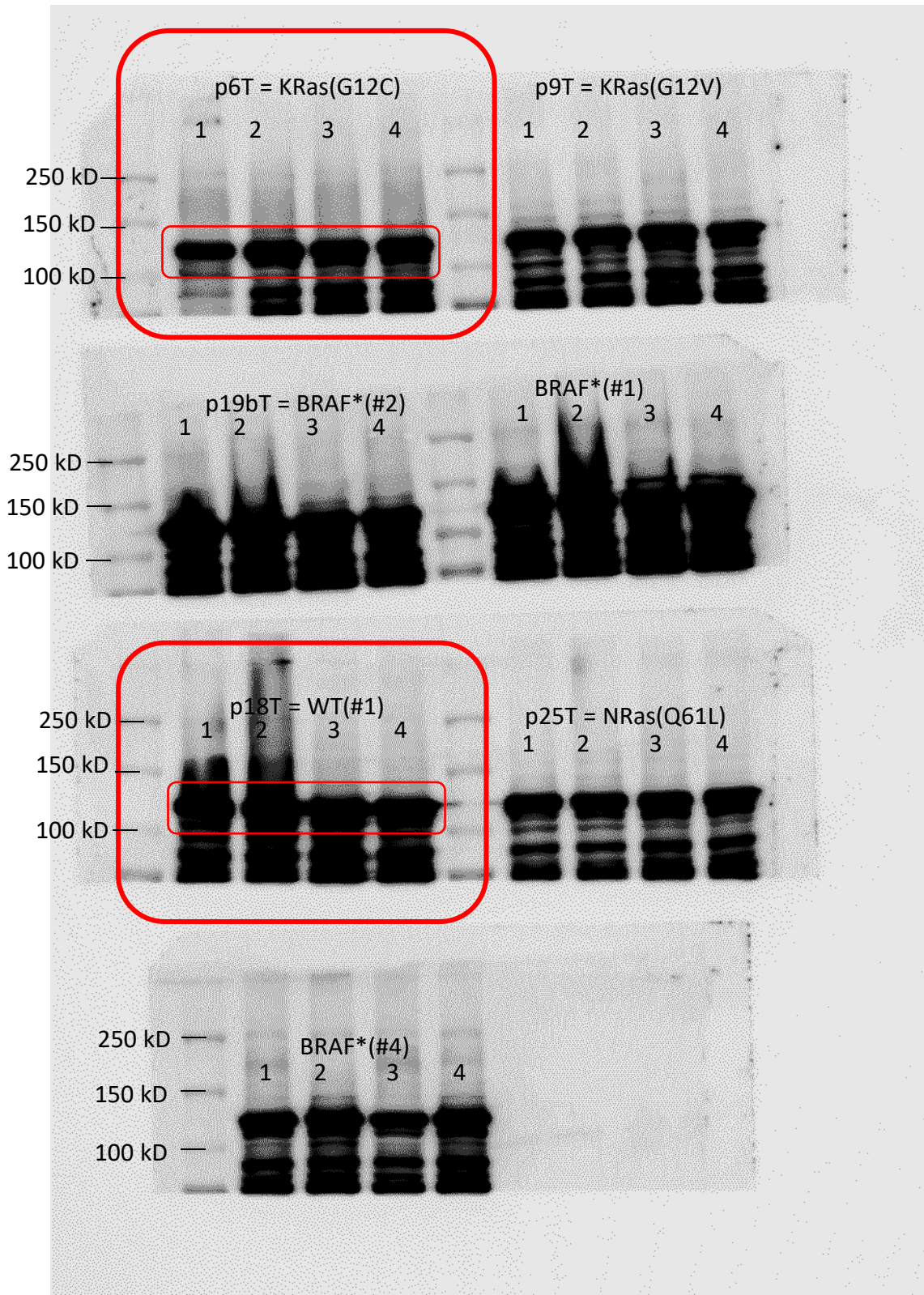
**Fig. 4e**  
**(SM)**



RAW blots (as scanned)

Vinculin

**Fig. 4e**  
**(SM)**



- Marker
- 1 DMSO
  - 2 Afatinib
  - 3 Sel+SCH
  - 4 PMA+OA

signal cranked up

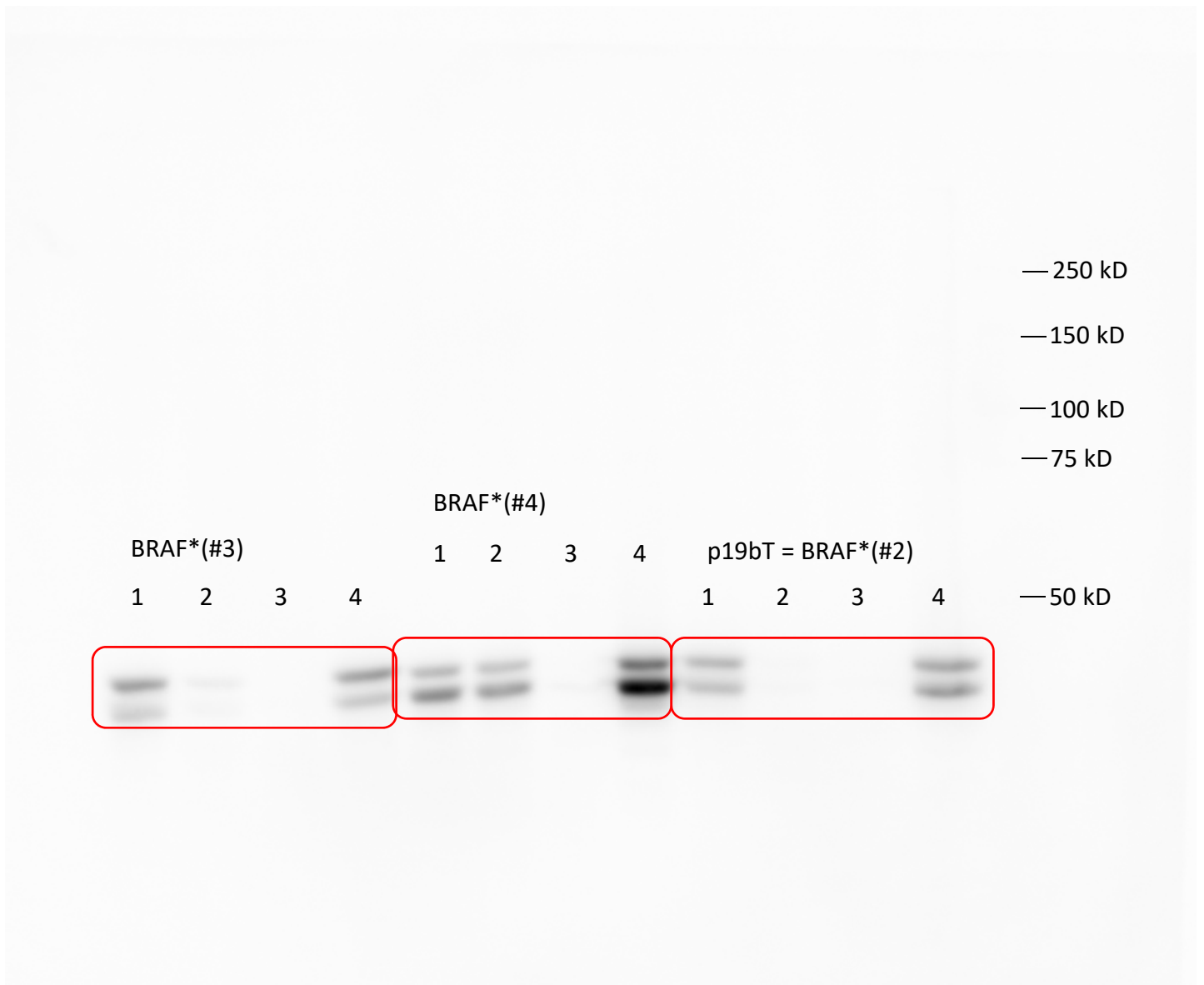


RAW blots (as scanned)

phospho-ERK

**Fig. 4e**  
**(JBP)**

Marker  
1 DMSO  
2 Afatinib  
3 Sel+SCH  
4 PMA+OA

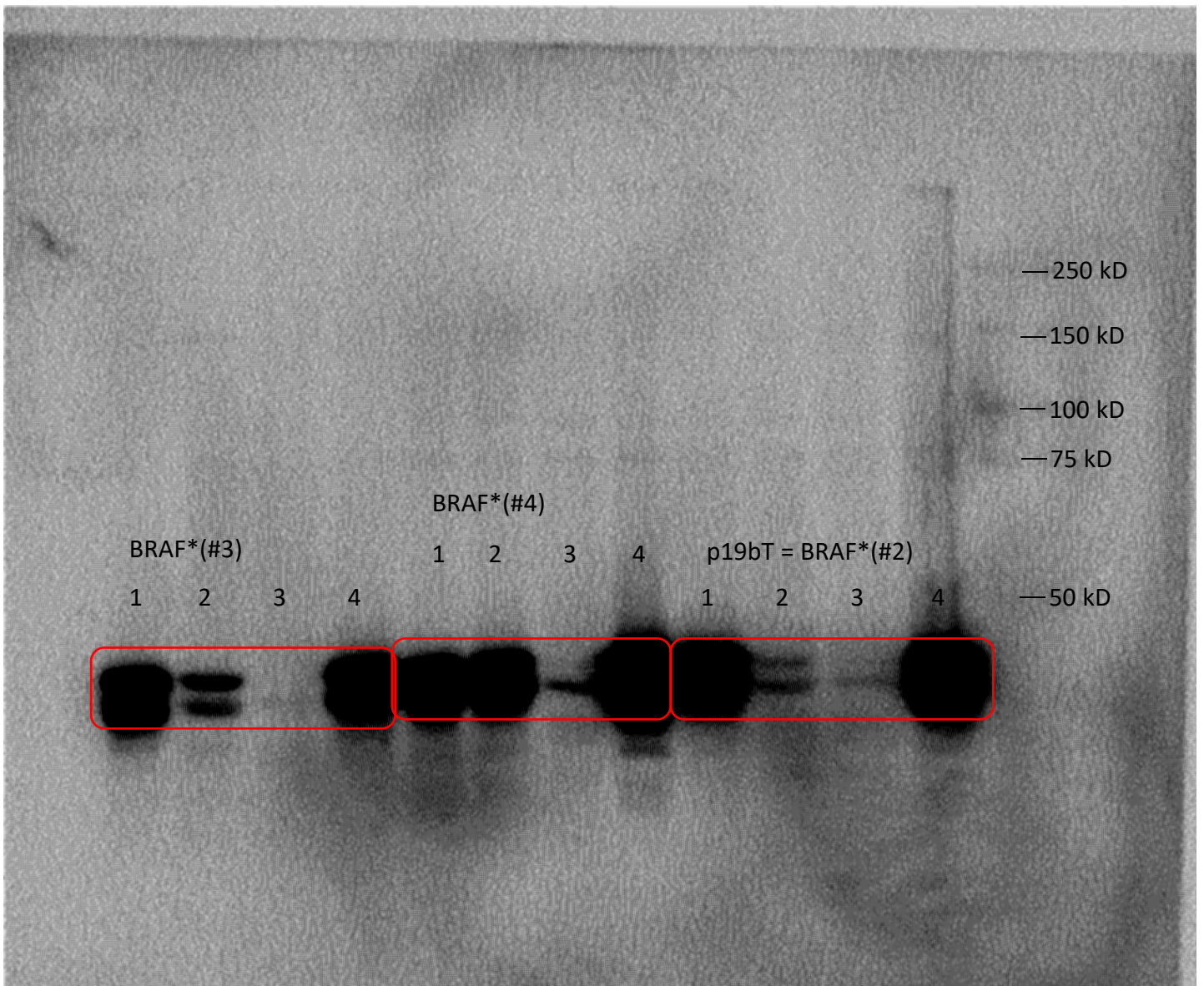


RAW blots (as scanned)

phospho-ERK

**Fig. 4e**  
**(JBP)**

- Marker
- 1 DMSO
  - 2 Afatinib
  - 3 Sel+SCH
  - 4 PMA+OA



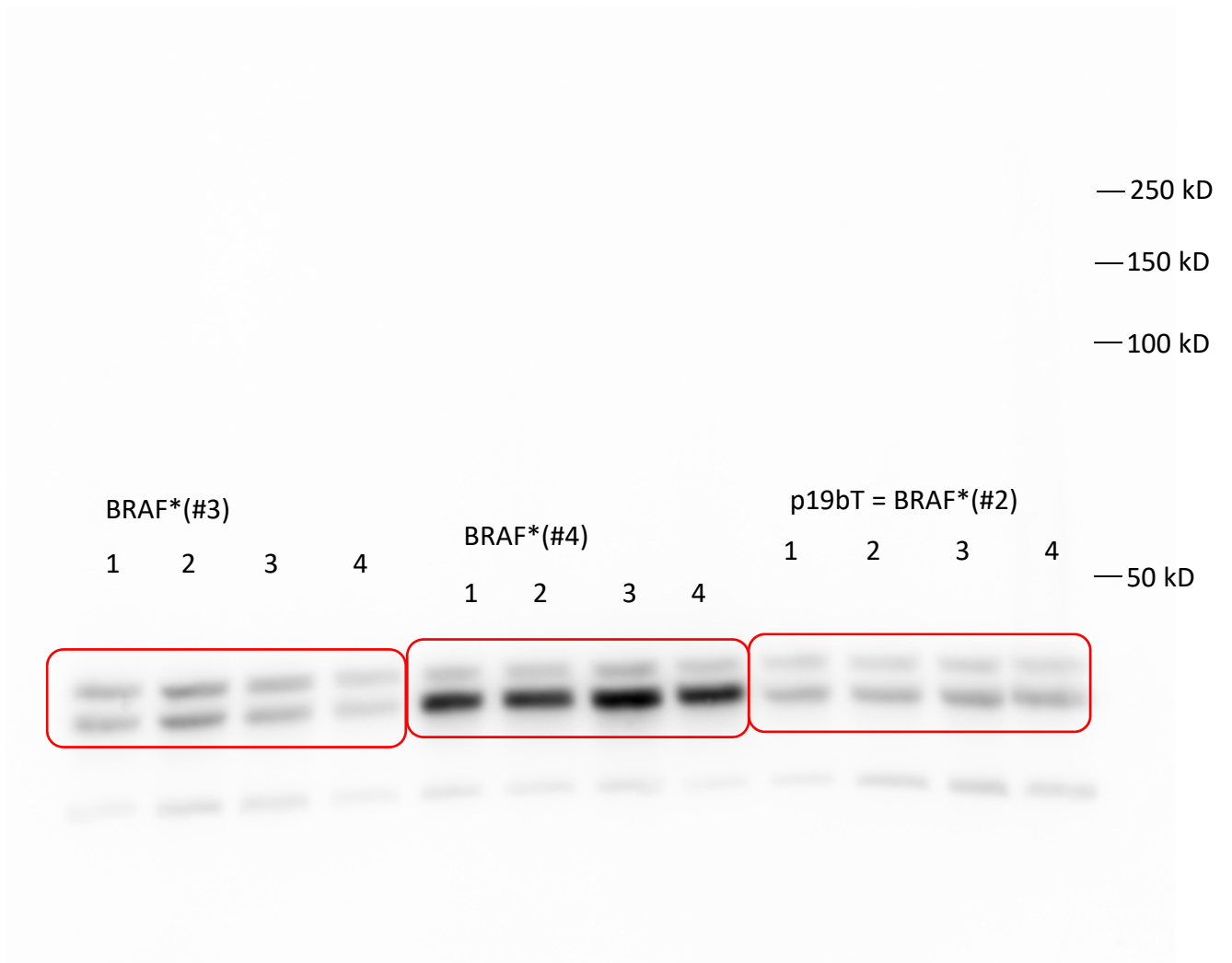
signal cranked up

RAW blots (as scanned)

total-ERK

**Fig. 4e**  
**(JBP)**

- Marker
- 1 DMSO
  - 2 Afatinib
  - 3 Sel+SCH
  - 4 PMA+OA

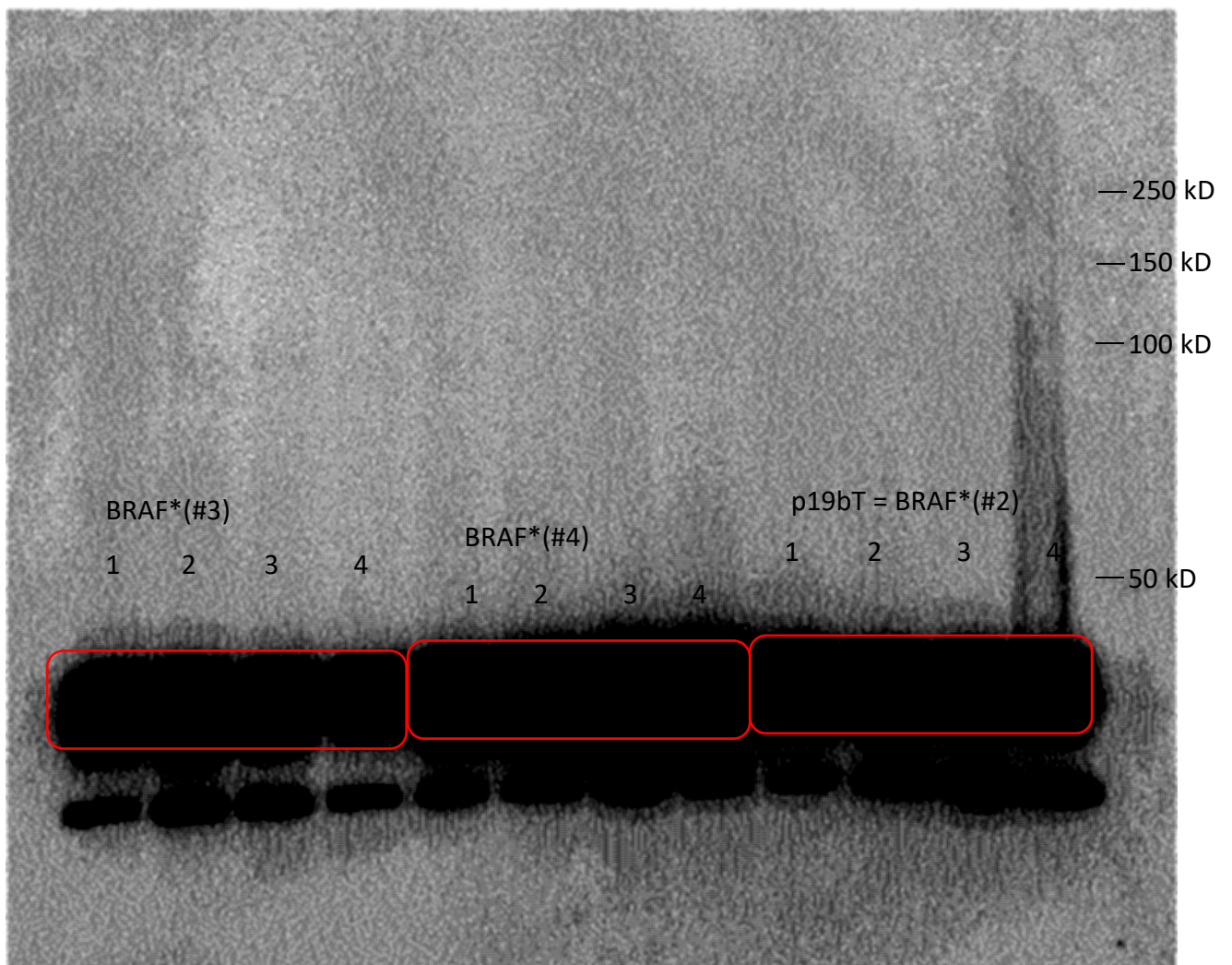


RAW blots (as scanned)

total-ERK

**Fig. 4e**  
**(JBP)**

- Marker
- 1 DMSO
  - 2 Afatinib
  - 3 Sel+SCH
  - 4 PMA+OA



signal cranked up

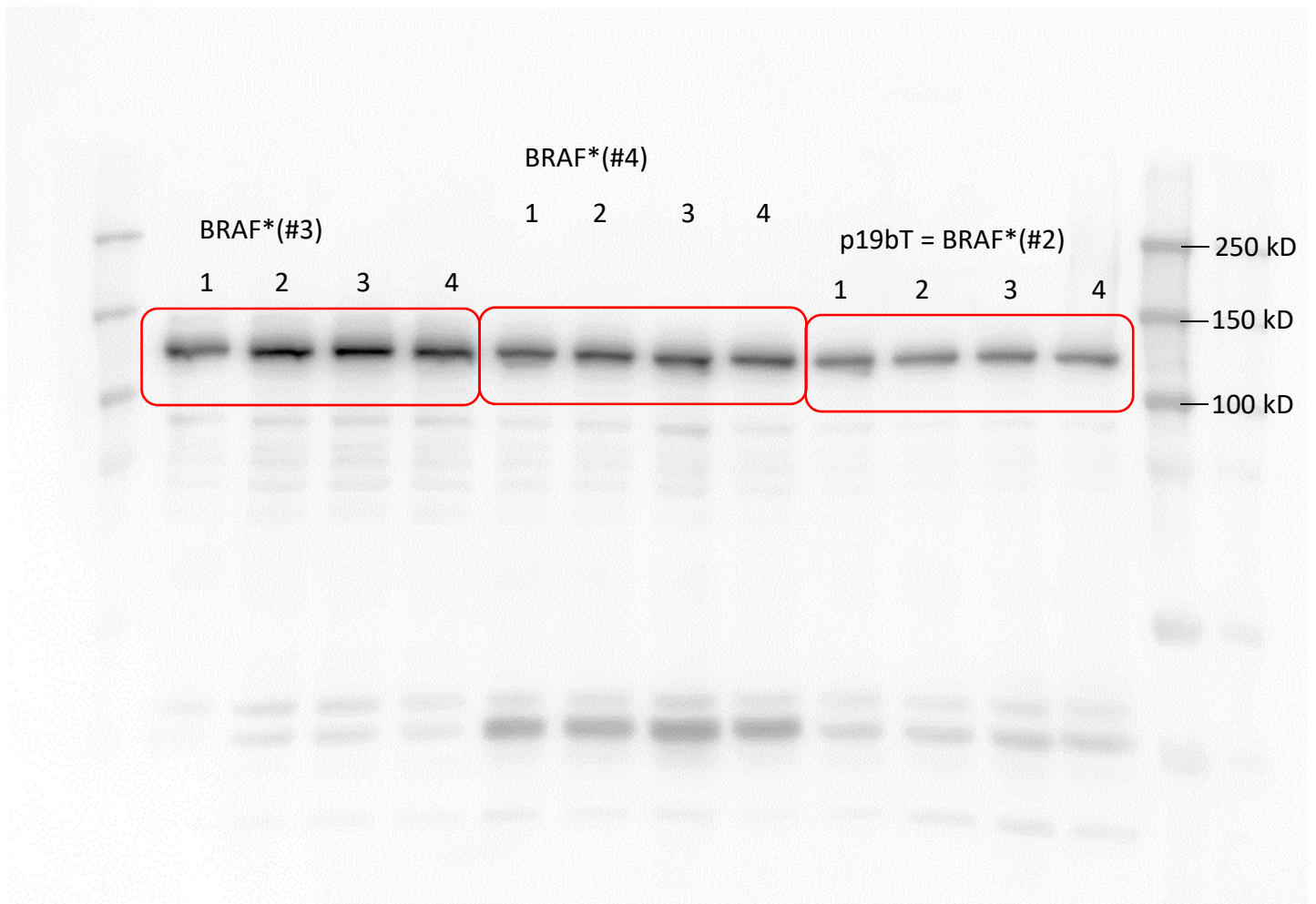


RAW blots (as scanned)

vinculin

**Fig. 4e**  
**(JBP)**

- Marker
- 1 DMSO
  - 2 Afatinib
  - 3 Sel+SCH
  - 4 PMA+OA

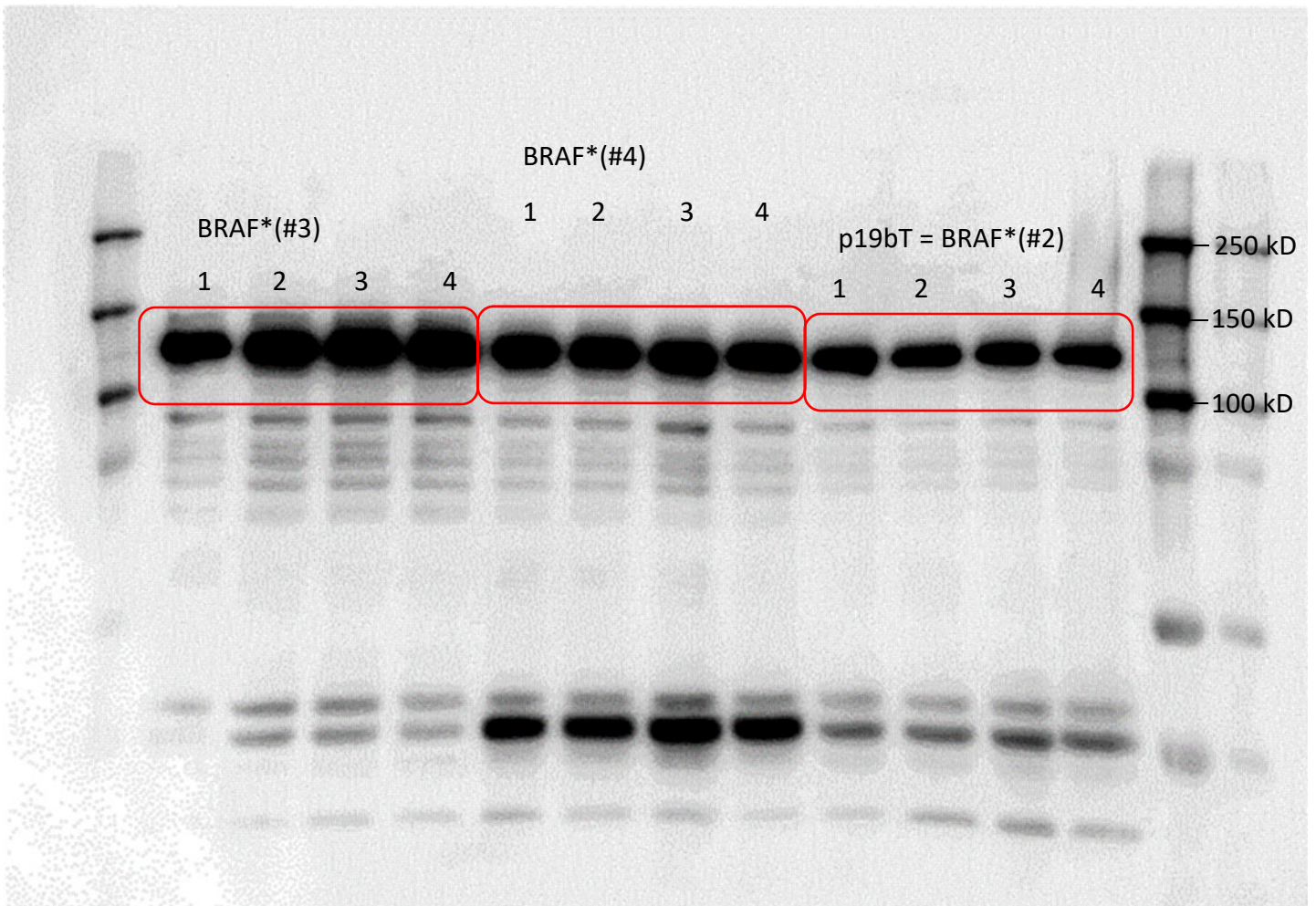


RAW blots (as scanned)

vinculin

**Fig. 4e**  
**(JBP)**

- Marker
- 1 DMSO
  - 2 Afatinib
  - 3 Sel+SCH
  - 4 PMA+OA



signal cranked up