

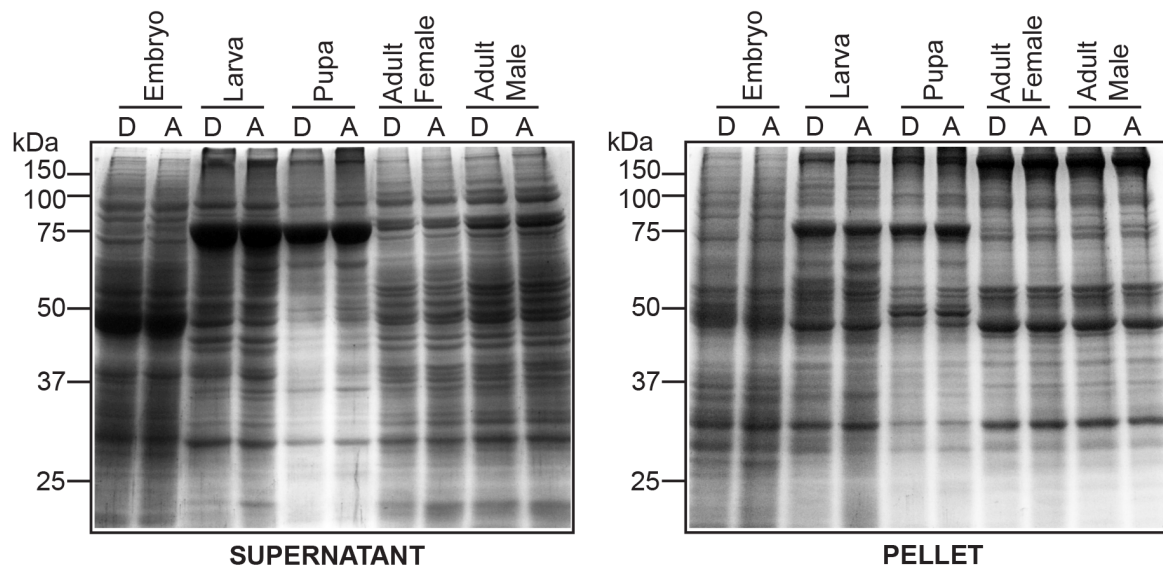
## SUPPLEMENTARY INFORMATION

### **A SUPERFAMILY-WIDE ACTIVITY ATLAS OF SERINE HYDROLASES IN *DROSOPHILA MELANOGASTER***

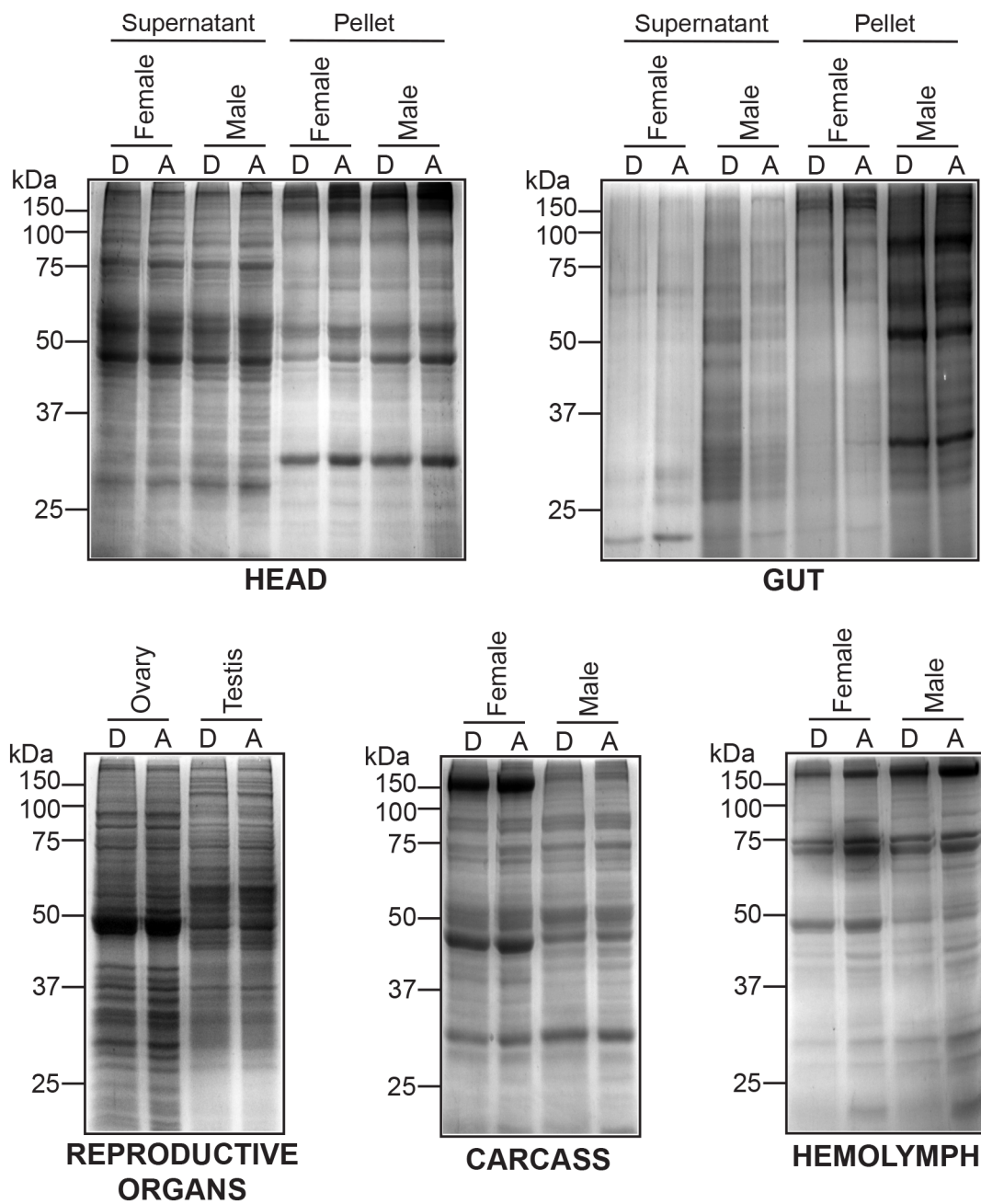
Kundan Kumar<sup>1</sup>, Amol Mhetre<sup>1</sup>, Girish Ratnaparkhi<sup>1,\*</sup>, Siddhesh S. Kamat<sup>1,\*</sup>

<sup>1</sup>Department of Biology, Indian Institute of Science Education and Research (IISER) Pune,  
Dr. Homi Bhabha Road, Pashan, Pune, Maharashtra, India 411008.

\*To whom the correspondence should be made: [siddhesh@iiserpune.ac.in](mailto:siddhesh@iiserpune.ac.in) or  
[girish@iiserpune.ac.in](mailto:girish@iiserpune.ac.in)



**Figure S1.** Coomassie staining of gel shown in **Figure 3A**, showing equal loading of active (A) and denatured (D) soluble (*left gel*) and membrane (*right gel*) lysates for respective developmental stages in flies.



**Figure S2.** Coomassie staining of gel shown in **Figure 4**, showing equal loading of active (A) and denatured (D) lysates from different tissues and/or anatomical components in adult male and female flies.