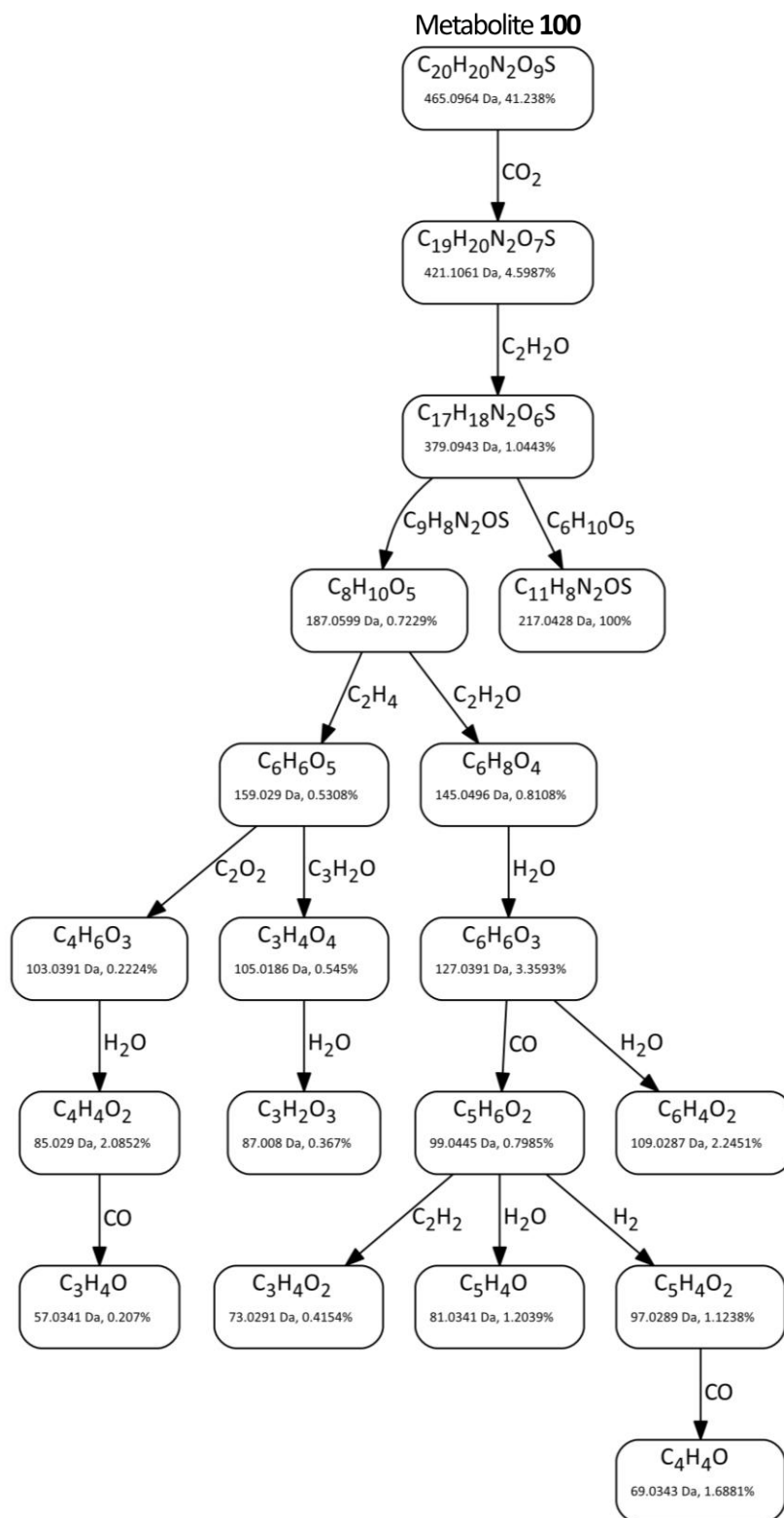


## Supplementary Figures 1-10

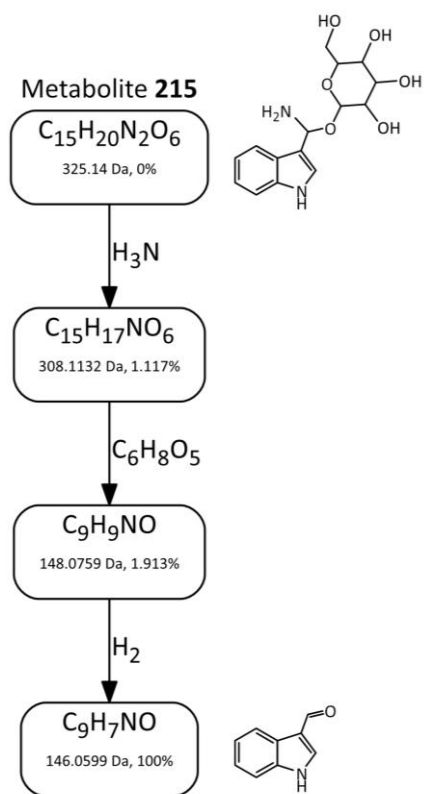
### **A general non-self response as part of plant immunity**

Benjamin A. Maier, Patrick Kiefer, Christopher M. Field, Lucas Hemmerle, Miriam Bortfeld-Miller, Barbara Emmenegger, Martin Schäfer, Sebastian Pfeilmeier, Shinichi Sunagawa, Christine M. Vogel, Julia A. Vorholt\*

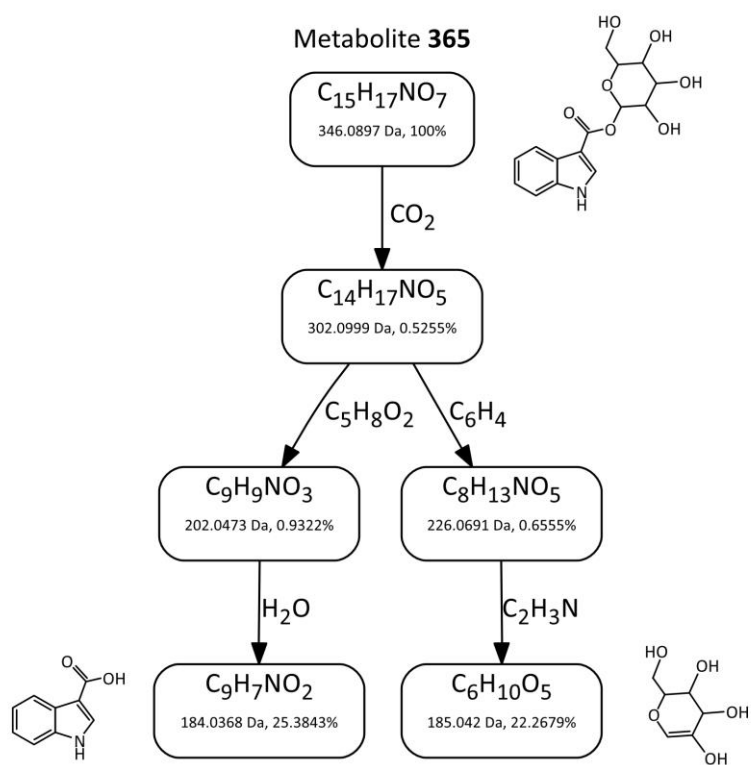
Institute of Microbiology, ETH Zurich, 8093 Zurich, Switzerland \*jvorholt@ethz.ch



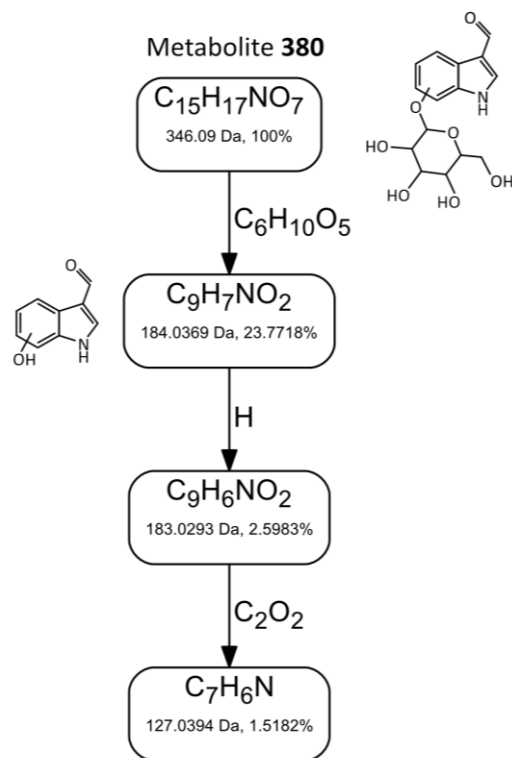
Supplementary Figure 1 | MS2 fragmentation tree of metabolite 100 constructed with SIRIUS.



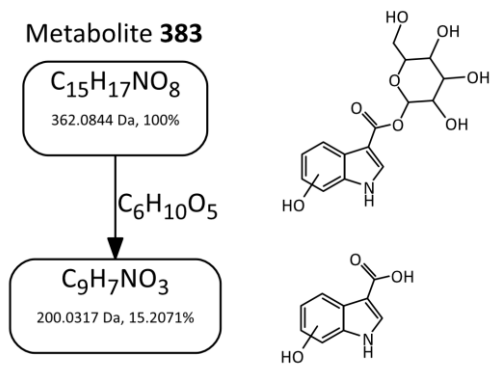
**Supplementary Figure 2 | MS2 fragmentation tree of metabolite 215 constructed with SIRIUS with suggested structures of (neutralized) parent and fragment ions.**



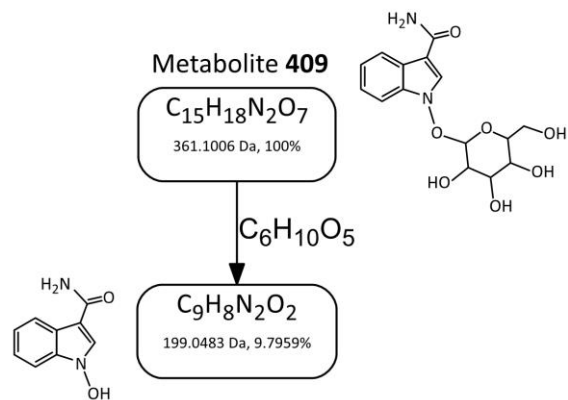
**Supplementary Figure 3 | MS2 fragmentation tree of metabolite 365 constructed with SIRIUS with suggested structures of (neutralized) parent and fragment ions.**



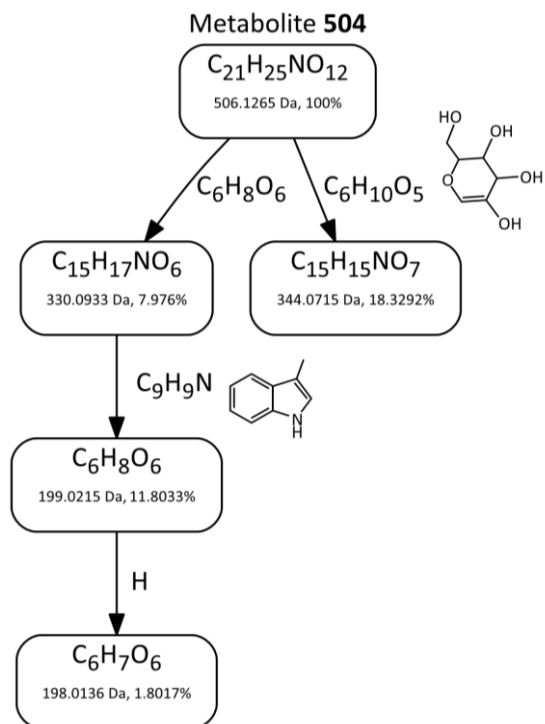
**Supplementary Figure 4 | MS2 fragmentation tree of metabolite 380 constructed with SIRIUS with suggested structures of (neutralized) parent and fragment ions.**



**Supplementary Figure 5 | MS2 fragmentation tree of metabolite 383 constructed with SIRIUS with suggested structures of (neutralized) parent and fragment ions.**

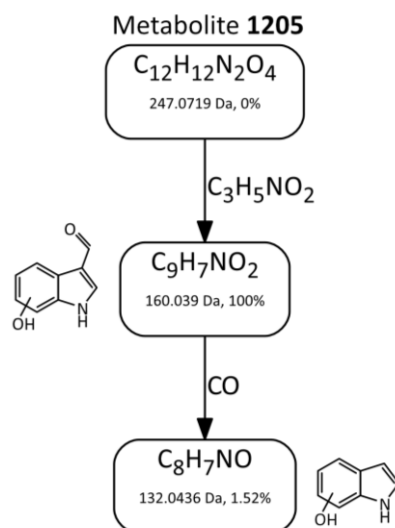


**Supplementary Figure 6 | MS2 fragmentation tree of metabolite 409 constructed with SIRIUS with suggested structures of (neutralized) parent and fragment ions.**

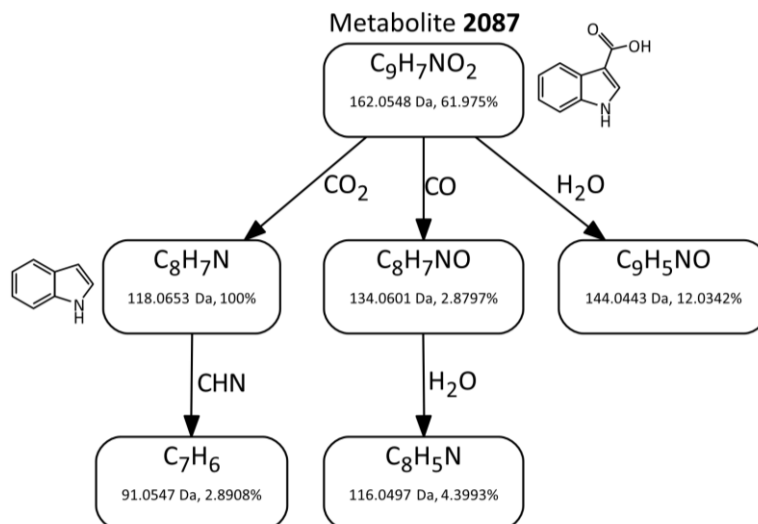


**Supplementary Figure 7 | MS2 fragmentation tree of metabolite 504 constructed with SIRIUS with suggested structures of (neutralized) fragment ions.**

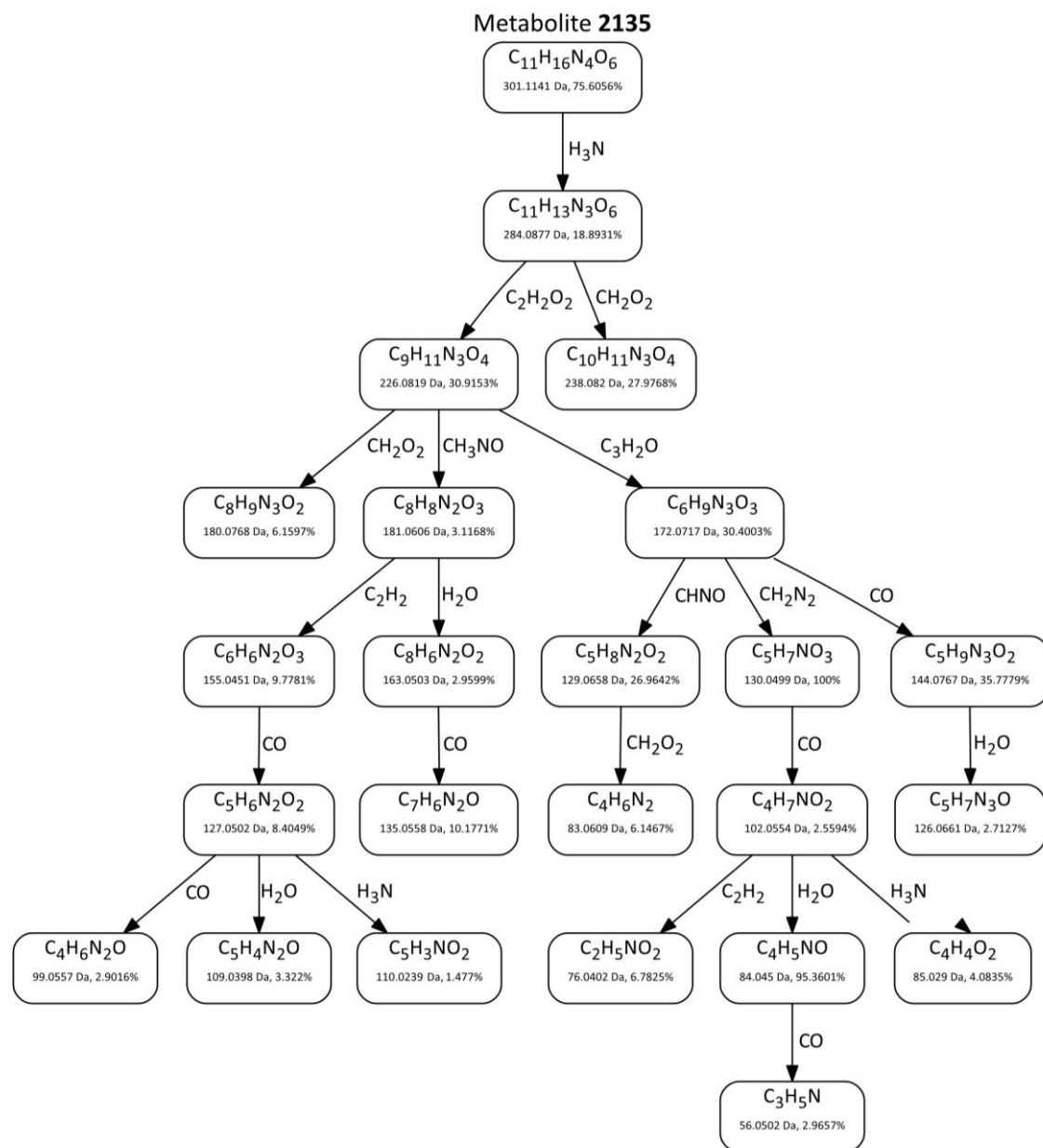




**Supplementary Figure 8 | MS2 fragmentation tree of metabolite 1205 constructed with SIRIUS with suggested structures of (neutralized) fragment ions.**



**Supplementary Figure 9 | MS2 fragmentation tree of metabolite 2087 constructed with SIRIUS with suggested structures of (neutralized) parent and fragment ions.**



**Supplementary Figure 10 | MS2 fragmentation tree of metabolite 2135 constructed with SIRIUS.**