

819 **Extended Figure Legends:**

820

821 **Figure S1: Cross-sectional SARS-CoV-2 Ab responses overtime.** a) IgM, IgA and IgG OD
822 values against S, RBD and N are binned based on days post onset of symptoms (POS). The
823 data is grouped based on disease severity, 0-3 (black) and 4/5 (red). The mean OD value is
824 shown for each time window for both the 0-3 and 4/5 severity groups. OD = optical density.
825 b) ID₅₀ measured using the SARS-CoV-2 pseudotype neutralization assay are binned based
826 on days post onset of symptoms (POS). The data is grouped based on disease severity, 0-3
827 (black) and 4/5 (red). The mean ID₅₀ value is shown for each time window for both the 0-3
828 and 4/5 severity groups.

829

830 **Figure S2: Antibody isotype and specificity at the first time point for which an individual**
831 **became seropositive.** A) A cumulative frequency analysis describing the seroconversion in
832 the hospitalized cohort. Graph shows the percentage of individuals in the cohort that
833 become IgM, IgA or IgG seropositive to S, RBD and N. B) Patterns of seroconversion based
834 on antigen and Ab isotype for a subset of donors from whom sera was collected over
835 sequential early time points (<14 days POS, n=31). For individuals with at least 2 sera
836 collected <14 days POS, the first antigen(s) and Ab isotype(s) that gave an OD that was 4-
837 fold above background is reported. C) Pseudovirus neutralization and ELISA binding at early
838 time points POS for a subset of individuals where there was measurable neutralization titres
839 but IgG binding to S is low (OD <0.2) and IgM and/or IgA to S is higher (OD >0.4).

840

841 **Figure S3: Correlations between OD values and ID₅₀.** a) Correlation of ID₅₀ with IgG, IgM,
842 IgA OD values (at 1:50) against S, RBD and N (Spearman correlation, r). b) Correlation of ID₅₀

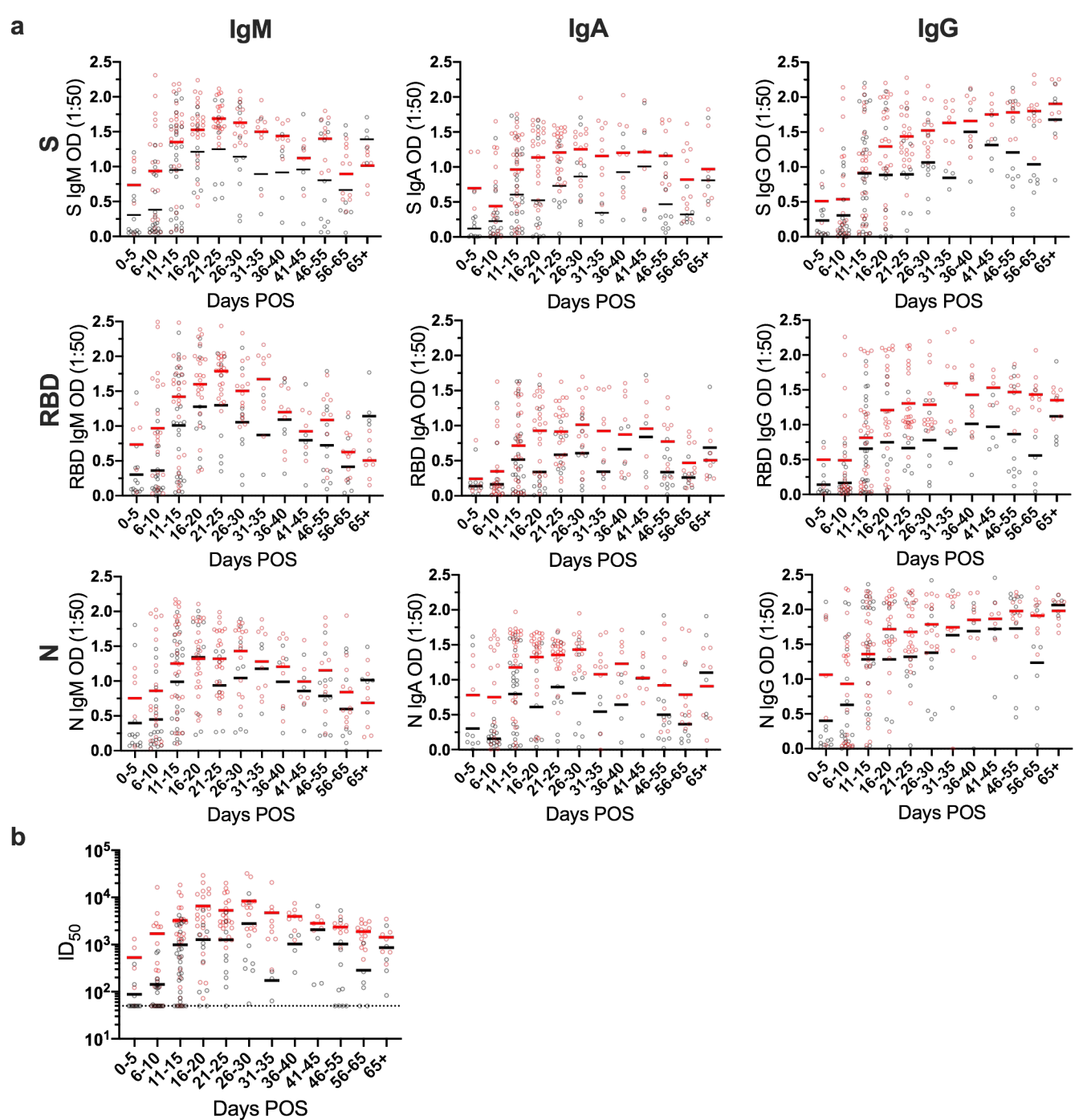
843 measured using wild-type virus and ID₅₀ measured using pseudovirus neutralization assays
844 (Spearman correlation, r). A linear regression was used to calculate the goodness of fit (r²).
845

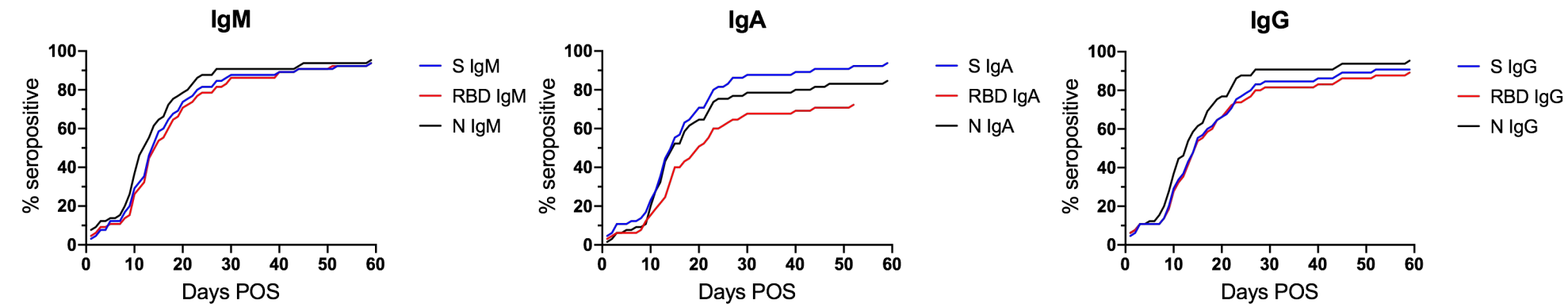
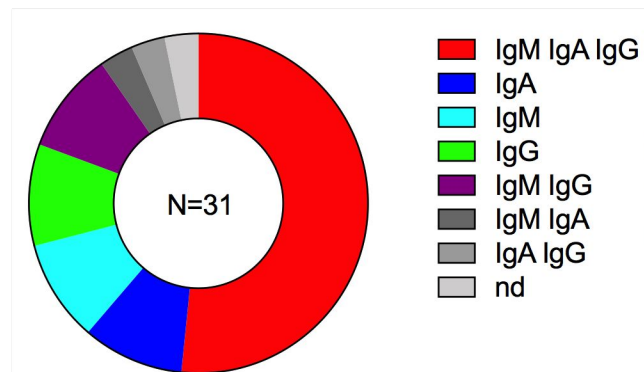
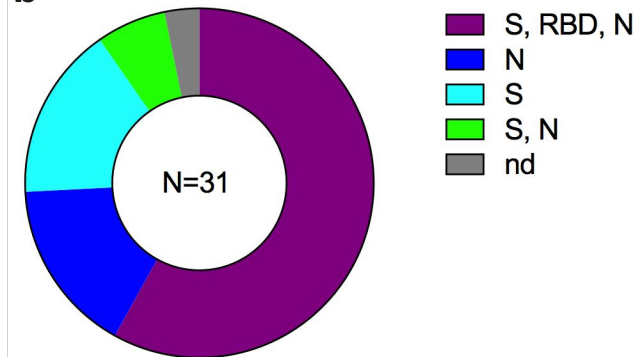
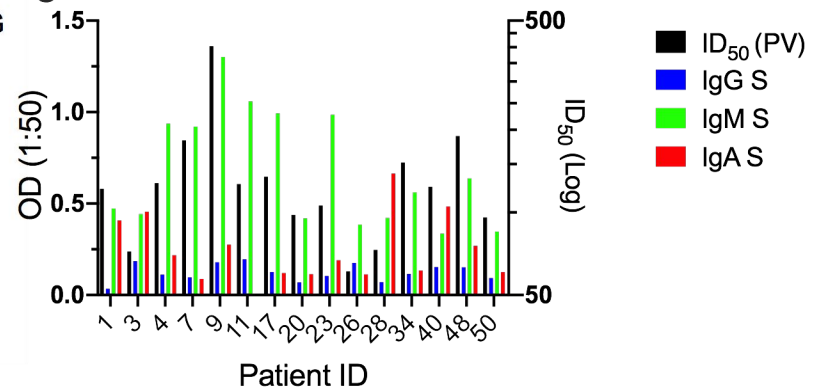
846 **Figure S4: Ab responses in HCW cohort.** A) Ab responses (IgG and IgM to S, RBD and N) over
847 time. Each line represents one individual. Asymptomatic individuals shown in green,
848 symptomatic individuals shown in black and PCR+ HCW shown in red (for comparison). The
849 dotted line represents day 0 post onset of symptoms. B) Correlation of ID₅₀ with IgG and
850 IgM OD values against S and N (Spearman correlation, r). A linear regression was used to
851 calculate the goodness of fit (r²).

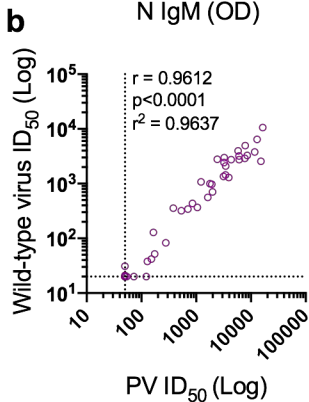
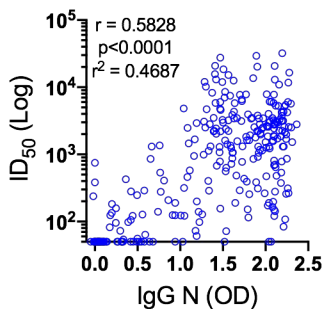
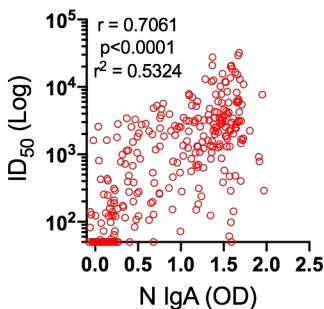
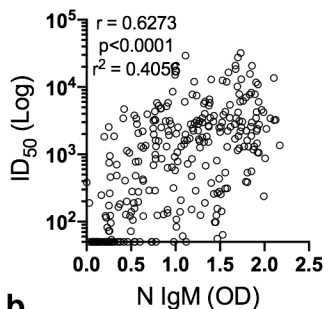
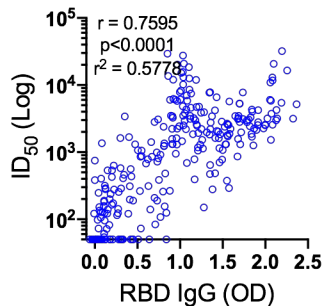
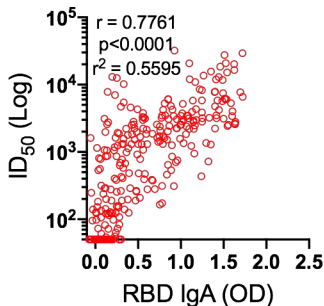
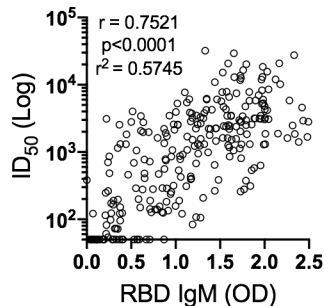
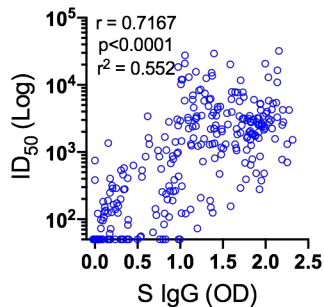
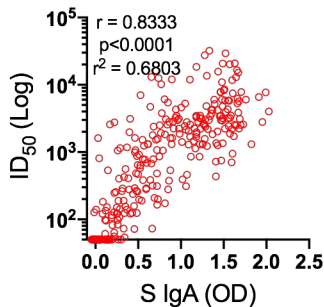
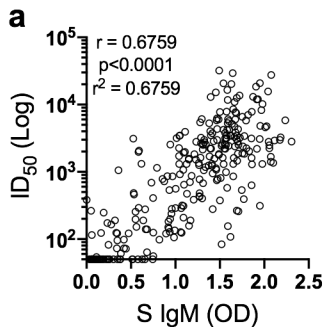
852

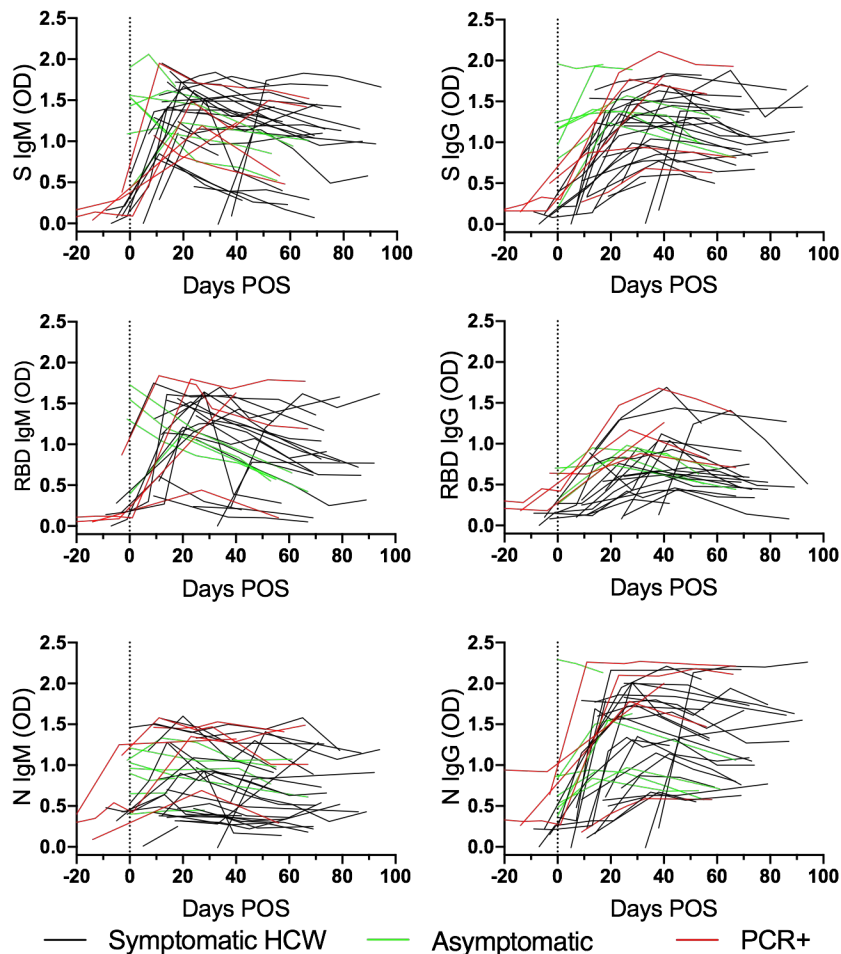
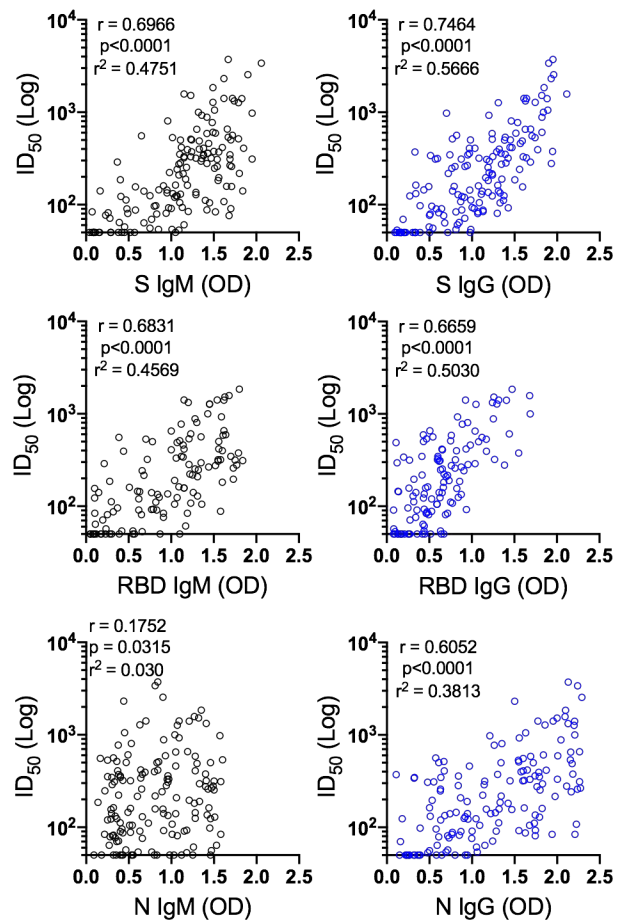
853

854



a**b****c**



a**b**

860 **Table S1: Patient information.** Age range, comorbidities, disease severity, hyper-
861 inflammatory status, gender and outcome are listed for each hospitalized participant.
862 Hyper-inflammatory (HI), Atrial fibrillation (AF), acute myeloid leukaemia (AML), cancer (ca),
863 chronic kidney disease (CKD), chronic obstructive pulmonary disease (COPD), end-stage
864 renal failure (ESRF), hypertension (HTN), ischaemic heart disease (IHD), interstitial lung
865 disease (ILD), non-alcoholic fatty liver disease (NAFLD), simultaneous pancreatic/kidney
866 transplant (SPK), type 1 diabetes mellitus (T1DM), type 2 diabetes mellitus (T2DM), venous
867 thromboembolism (VTE)
868

Donor number	Severity score	Hyper-inflammatory	Comorbidities	Age range	Sex	Final outcome
1	4	N	asthma, HTN, obesity, T2DM, sarcoidosis	50-59	M	Died
2	4	Y	obesity	50-59	M	Died
3	4	N	HTN	40-49	M	Died
4	4	Y	AF, HTN, obesity, sarcoidosis,	60-69	M	Discharged
5	4	N	HTN, T2DM	60-69	M	Discharged
6	4	Y	T1DM	40-49	M	Ward
7	4	Y	Hypothyroidism	70-79	M	Discharged
8	4	Y	T2DM, NAFLD	50-59	M	Died
9	4	Y	HTN, IHD	70-79	M	Died
10	4	Y	T2DM	70-79	M	Died
11	4	N	HTN, prostate ca	70-79	M	Discharged
12	4	Y	none	40-49	M	Discharged
13	4	Y	none	50-59	M	Ward
14	4	N	obesity, T2DM	50-59	F	Discharged
15	4	N	COPD	70-79	M	Discharged
16	2	N	none	50-59	M	Discharged
17	1	N	obesity	30-39	F	Discharged
18	1	N	CKD, dementia, HTN, IHD, obesity, VTE	70-79	F	Discharged
19	2	N	AF	90-99	M	Discharged
20	2	N	dementia, T2DM	60-69	M	Discharged
21	1	N	hepatitis C, Huntingdon's disease	60-69	M	Discharged
22	1	N	AF, dementia, HTN, stroke	80-89	M	Discharged
23	1	N	CKD, T2DM, VTE	60-69	M	Died
24	4	N	chronic pancreatitis, T2DM	60-69	M	Ward
25	1	N	AF, Marfan's syndrome	50-59	M	Discharged
26	0	N	ESRF, obesity, T1DM	20-29	F	Discharged
28	4	N	none	40-49	M	Discharged
29	0	N	ESRF, T1DM, SPK	40-49	M	Discharged
31	0	N	ESRF, obesity	20-29	F	Discharged
32	4	N	HTN, T2DM	60-69	M	Discharged
33	4	N	HTN, obesity	60-69	F	Discharged
34	4	Y	asthma, obesity	50-59	F	Discharged
35	4	N	none	40-49	M	Discharged
36	4	Y	none	30-39	M	Discharged
37	4	N	asthma, inflammatory polyarthritis, obesity	60-69	M	Discharged
38	4	N	none	30-39	M	Discharged
39	4	N	T2DM, obesity	30-39	M	Discharged
40	5	N	obesity	30-39	F	Discharged
41	5	Y	none	60-69	M	Discharged
42	5	N	asthma, obesity	40-49	M	Transferred to local hospital
43	5	Y	HTN	50-59	M	Transferred to local hospital
44	5	N	none	50-59	M	Died
45	5	N	none	50-59	M	Discharged
46	5	Y	asthma, obesity, T2DM	50-59	M	Died
47	2	N	none	20-29	M	Discharged
48	3	N	depression, obesity, T1DM	50-59	M	Discharged
49	1	N	HTN, T2DM	60-69	M	Discharged
50	2	N	none	60-69	M	Discharged
51	2	N	none	30-39	M	Discharged
52	0	N	AF, ESRF, T2DM	60-69	M	Ward
53	2	N	HTN, obesity	50-59	M	Discharged
54	0	N	AML	20-29	F	Discharged
55	3	N	bladder ca	60-69	M	Died
56	1	N	asthma	50-59	M	Discharged
57	0	N	dementia, frailty, Parkinsonism	90-99	M	Died
58	1	N	CKD, frailty	90-99	F	Died
59	0	N	CCF, IHD, PVD, stroke, T2DM	80-89	M	Transferred to local hospital
60	0	N	mycosis fungoides,	50-59	F	Ward
61	1	N	COPD, bronchiectasis, renal transplant	70-79	M	Discharged

871
872
873
874
875
876

Table S2: Cumulative frequency of seropositivity for SARS-CoV-2 antigens. Percentage of individuals that become seropositive (IgM, IgA, IgG) in a specific time window for antigens S, RBD and N in ELISA. A sample was considered seropositive when the OD value was four-fold above background.

Days POS	Cumulative seropositivity (%)									
	IgG			IgM			IgA			IgG or IgM or IgA
	S	RBD	N	S	RBD	N	S	RBD	N	
7	10.8	10.8	15.4	12.3	10.8	15.4	12.3	6.2	9.2	21.5
14	47.7	47.7	58.5	52.3	49.2	61.5	49.2	32.3	47.7	66.2
21	67.7	69.2	76.9	75.4	72.3	80.0	70.8	52.3	64.6	86.2
28	83.1	80.0	90.8	84.6	81.5	90.8	86.2	64.6	76.9	93.8
35	84.6	81.5	90.8	87.7	86.2	90.8	87.7	67.7	78.5	93.8
42	86.2	83.1	90.8	89.2	89.2	90.8	89.2	69.2	80.0	93.8
49	89.2	86.2	93.8	90.8	90.8	93.8	90.8	70.8	83.1	95.4
56	90.8	87.7	93.8	92.3	92.3	93.8	92.3	72.3	83.1	95.4
63	92.3	89.2	93.8	92.3	92.3	95.4	93.8	72.3	84.6	96.9

877
878
879
880
881
882
883
884
885
886
887

Table S3: ID₅₀ summary at different days post onset of symptoms. Percentage of individuals in a given time window with undetectable (ID₅₀ <50), low (ID₅₀ 50-200), medium (ID₅₀ 201-500), high (ID₅₀ 501-2000) or potent (ID₅₀ 2000+) nAb titres. Every serum sample from all individuals in the PCR+ hospital cohort is included in this table. Historic healthy control sera samples were collected before the COVID-19 global pandemic and tested at 1:20 dilution.

	ID ₅₀	ID ₅₀	Covid	Days post onset of symptoms												
				0-5	6-10.	11-15.	16-20	21-25	26-30	31-35	36-40	41-45	46-50	51-55	56-65	65+
Undetectable	<50	3.1	100	55.6	40.0	16.1	5.7	3.0	4.3	0.0	0.0	0.0	0.0	25.0	11.8	0.0
Low	50-200	7.7	0	16.7	30.0	14.3	14.3	6.1	4.3	16.7	0.0	22.2	12.5	8.3	11.8	8.3
Medium	201-500	10.8	0	16.7	7.5	8.9	5.7	6.1	17.4	16.7	8.3	0.0	0.0	8.3	11.8	25.0
High	501-2000	18.5	0	11.1	7.5	28.6	20.0	21.2	8.7	25.0	41.7	22.2	12.5	33.3	35.3	50.0
Potent	2000+	60.0	0	0.0	15.0	32.1	54.3	63.6	65.2	41.7	50.0	55.6	75.0	25.0	29.4	16.7
	Number of samples	65	25	18	40	56	35	33	23	12	12	9	8	12	17	12

888
889