

Mohajeri, N., Walch, W., Gudmundsson, A., Heaviside, C., Askari, S., Wilkinson, P. & Davies, M. (2021) Covid-19 mobility restrictions: impacts on urban air quality and health. *Buildings & Cities*.

Supplemental data

Appendix A Historical and year 2020 weather data

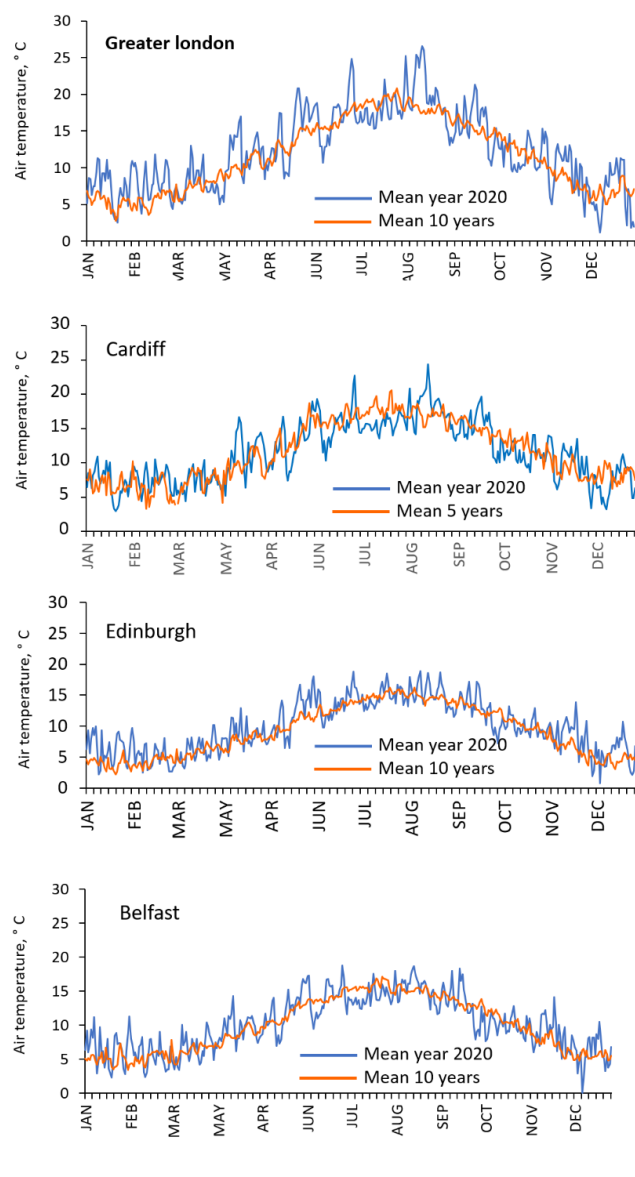


Figure S1. Mean daily temperature (°C) for the year 2020 and the previous 10 years (2010-2019) for 4 cities in the study

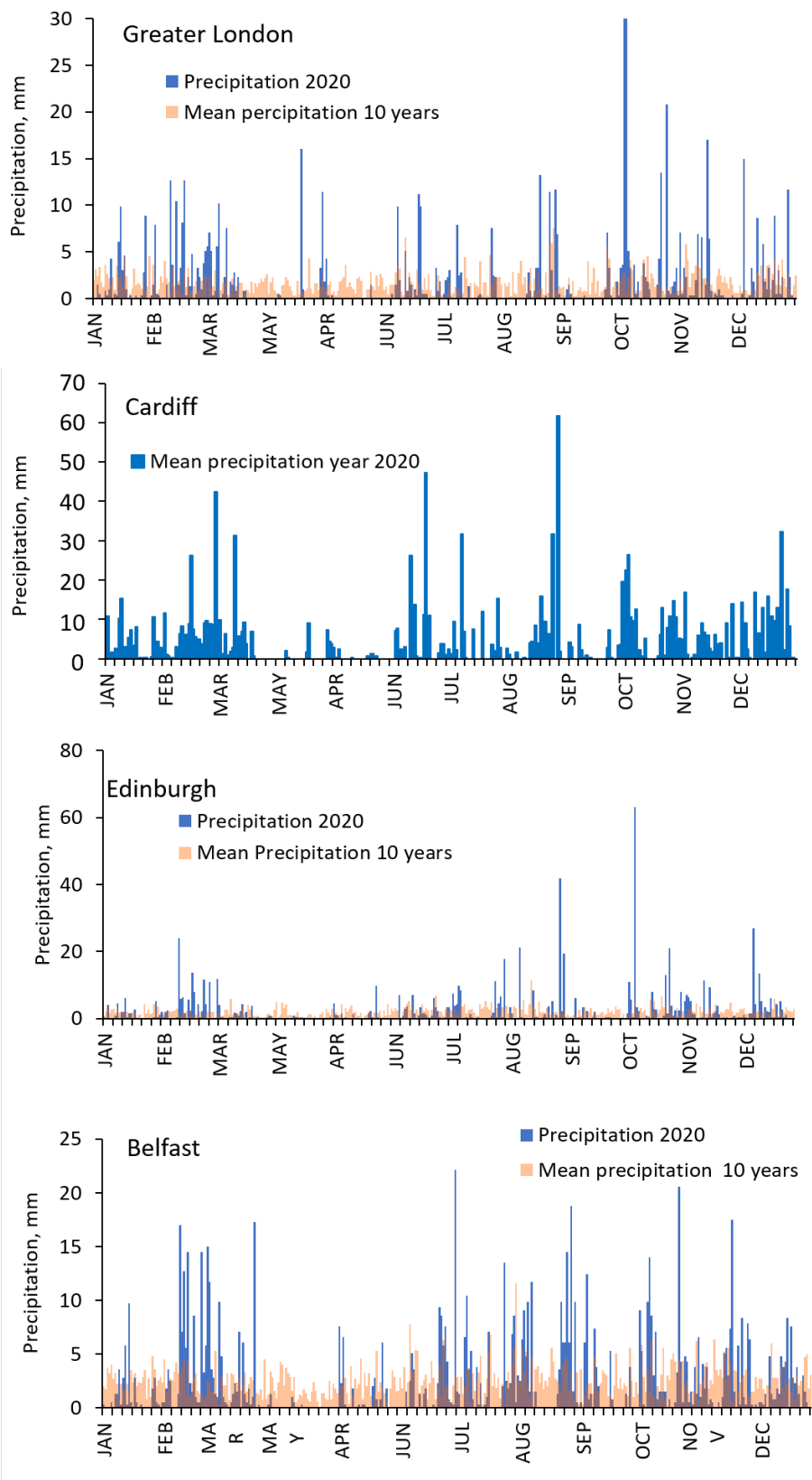


Figure S2. Mean daily precipitation (mm) for the year 2020 and the previous 10 years (2010-2019) for 4 cities in the study

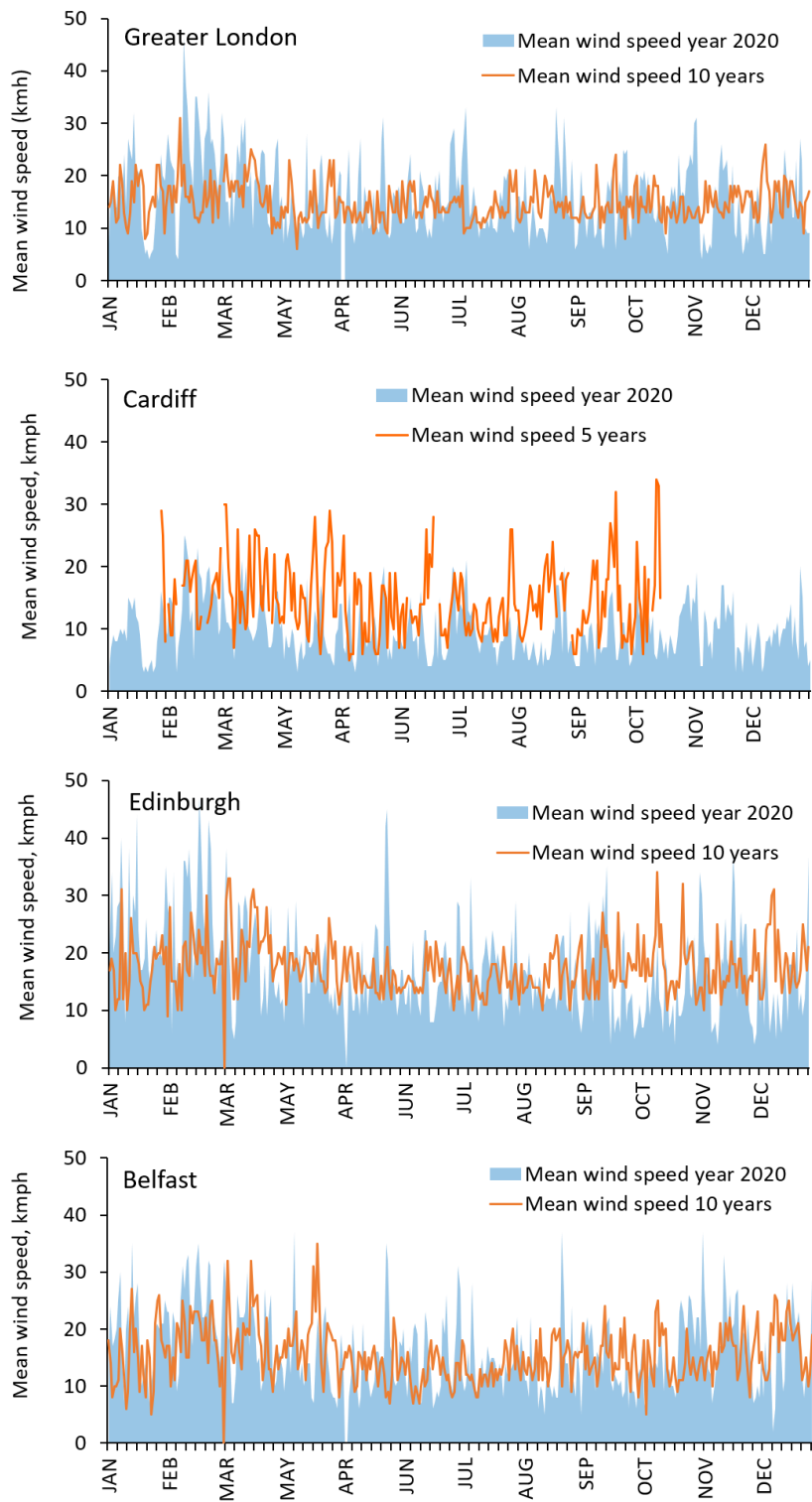


Figure S3. Mean daily wind speed (in kmph) for the year 2020 and the previous 10 years (2010-2019) for 4 cities in the study

Appendix B

Feature importance for weather-corrected Machine Learning model

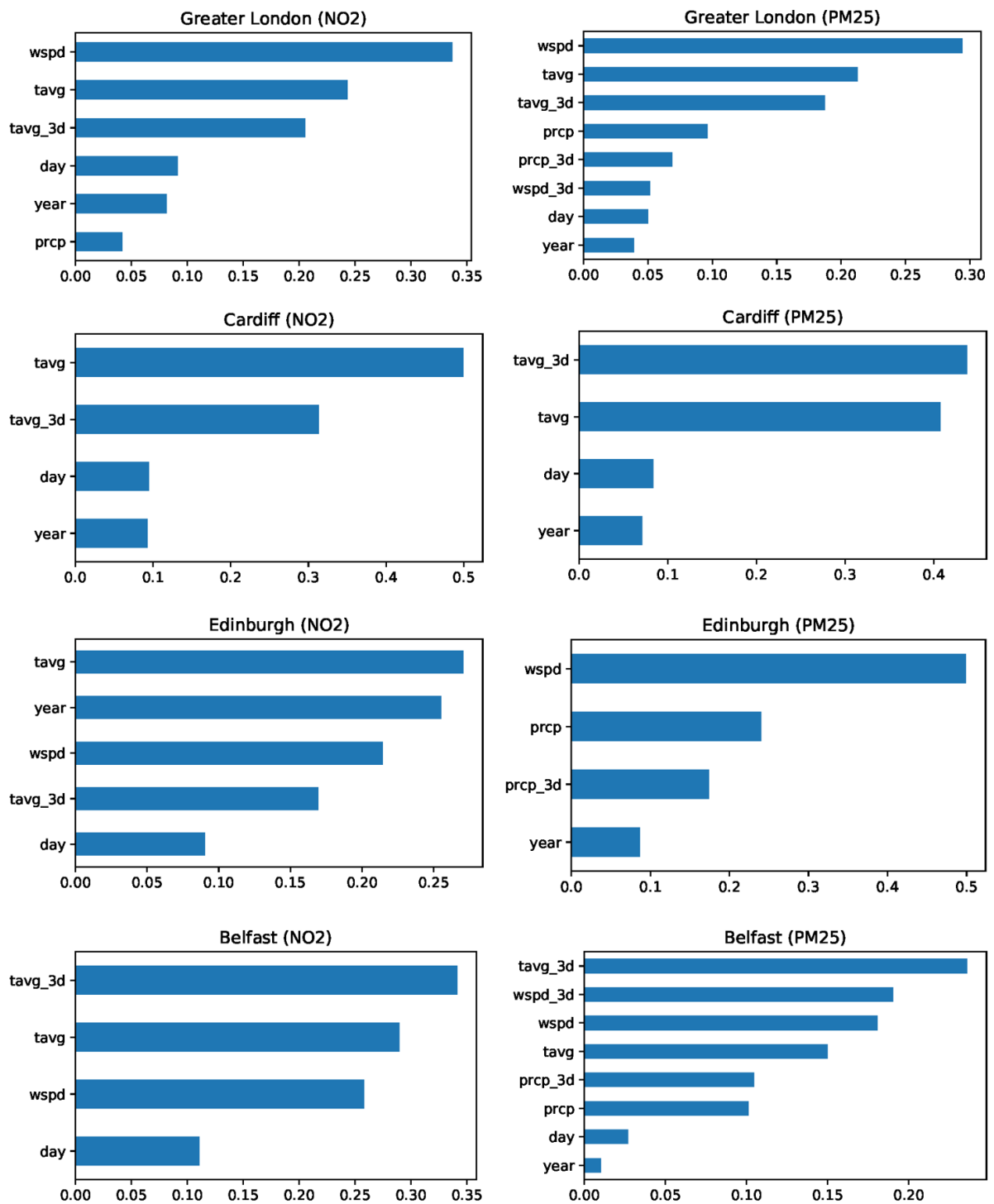


Figure S4. Feature importance for weather corrected Machine Learning models for each city and for NO₂ and PM_{2.5}

Appendix C

Changes in the ground-level NO₂ and PM_{2.5} concentrations (for urban background stations)

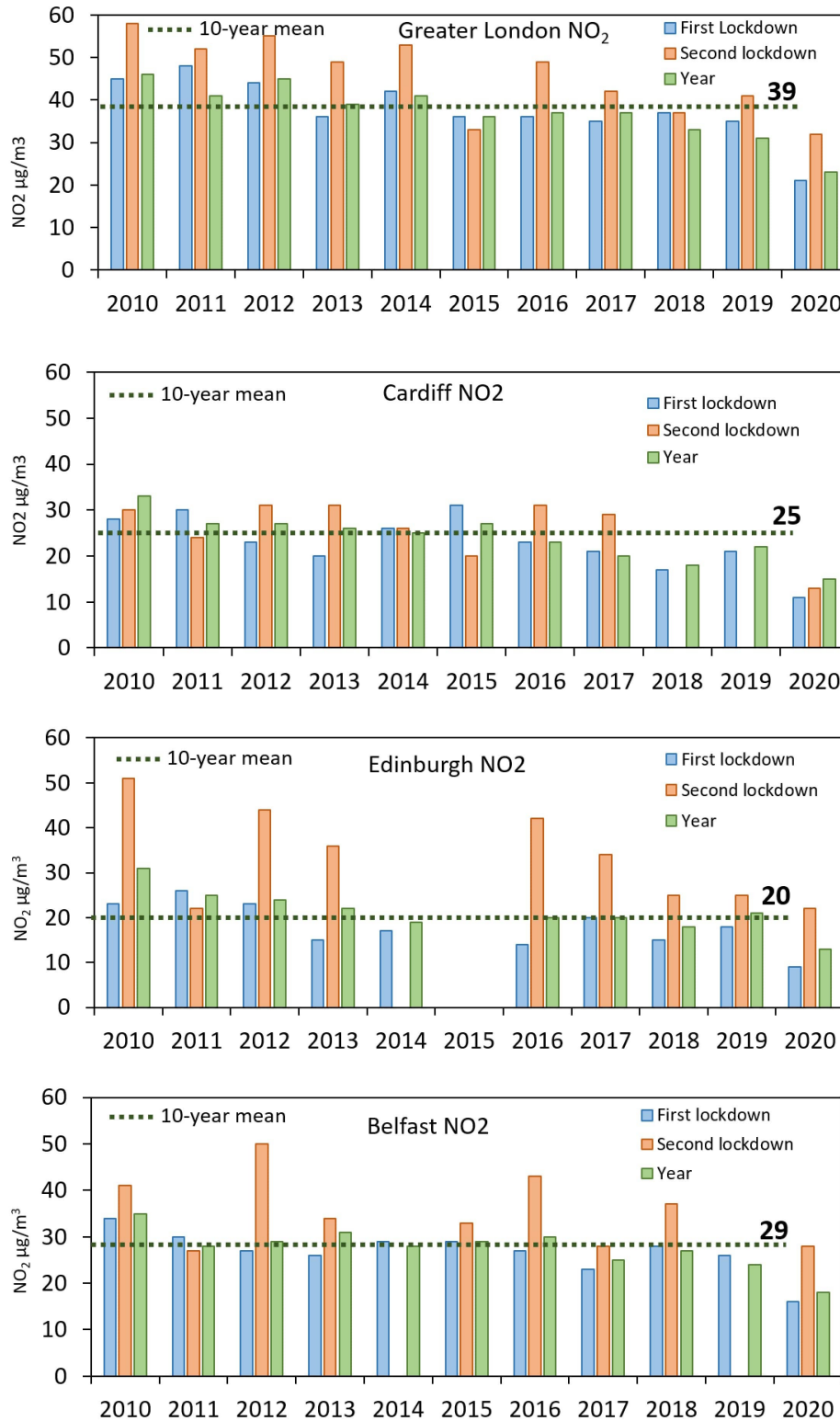


Figure S5. Comparison between yearly average concentration of NO₂ for urban background stations for each city and for the two lockdown periods. Dashed lines show the 10-year average (2010-2019).

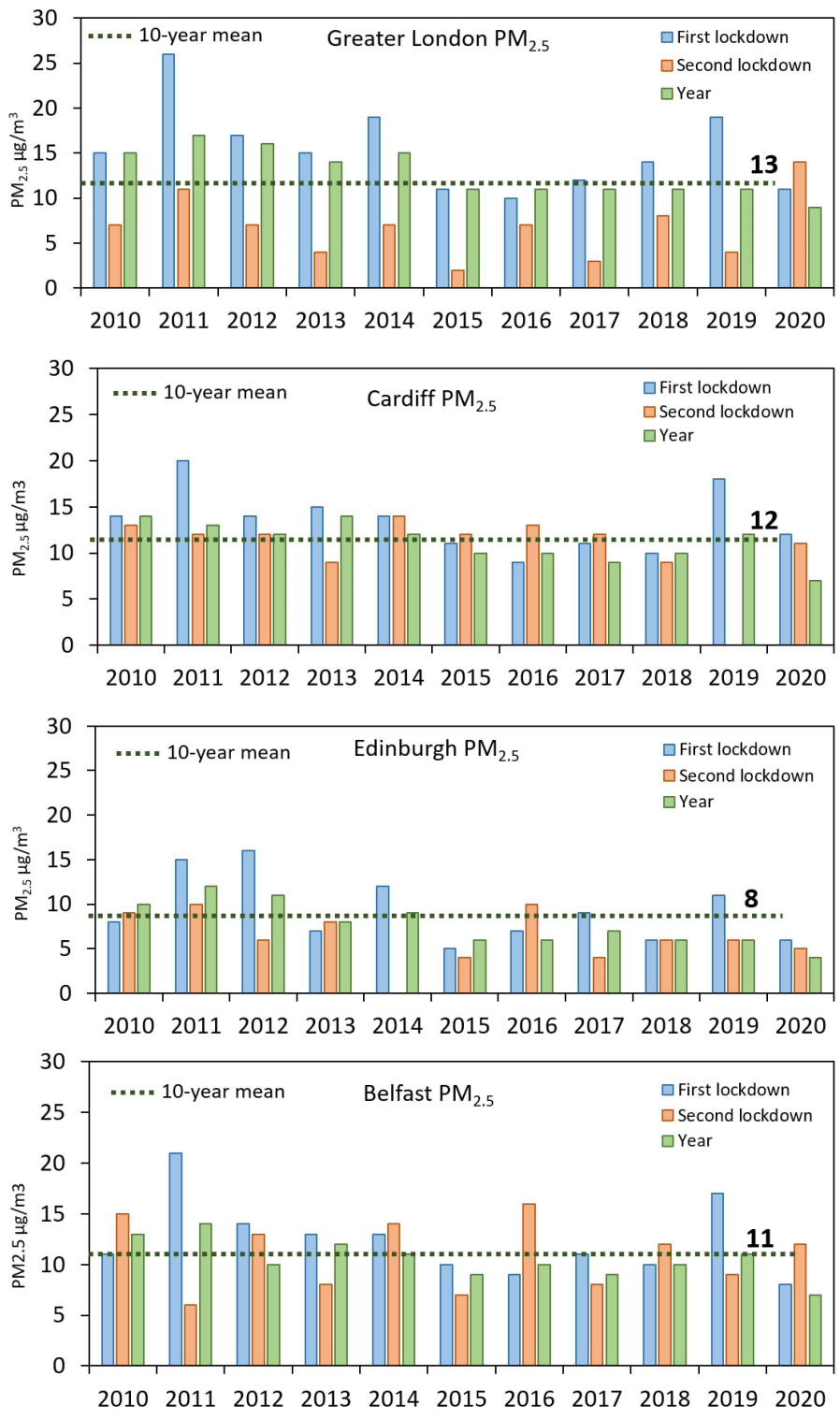


Figure S6. Comparison between yearly average concentration of PM_{2.5} for urban background stations for each city and for the two lockdown periods. Dashed lines show the 10-year average (2010-2019).