

Supplementary materials

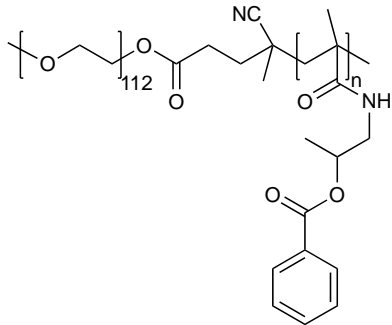


Figure S1. Chemical structure of polymer methoxy poly(ethylene glycol)-*b*-(N-(2-benzoyloxypropyl)methacrylamide) (mPEG-*b*-p(HPMAm-Bz)).

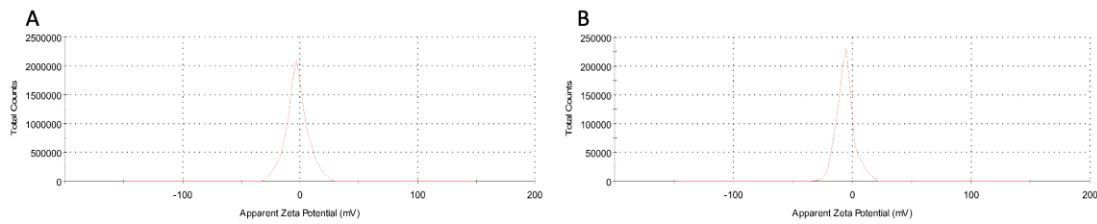


Figure S2. Zeta potential measurement of PM and DTX-PM loaded with 1 mg/mL DTX.

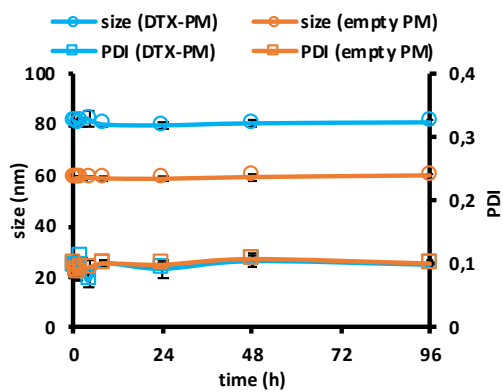
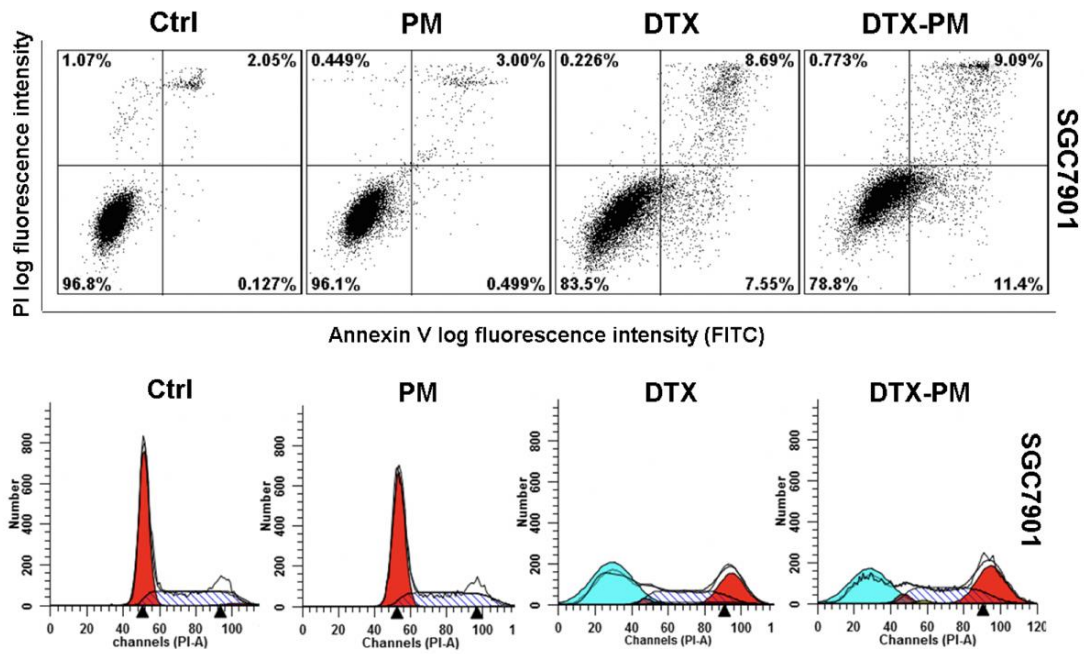
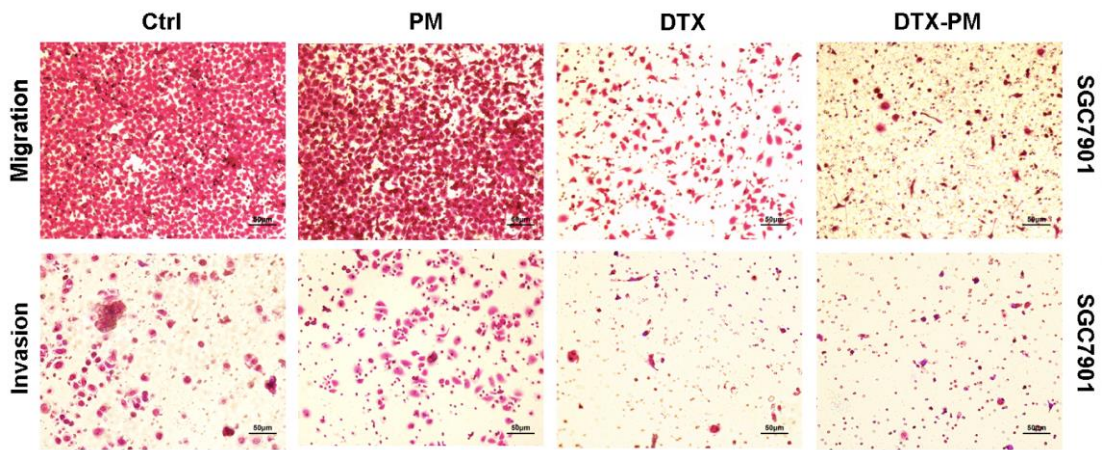


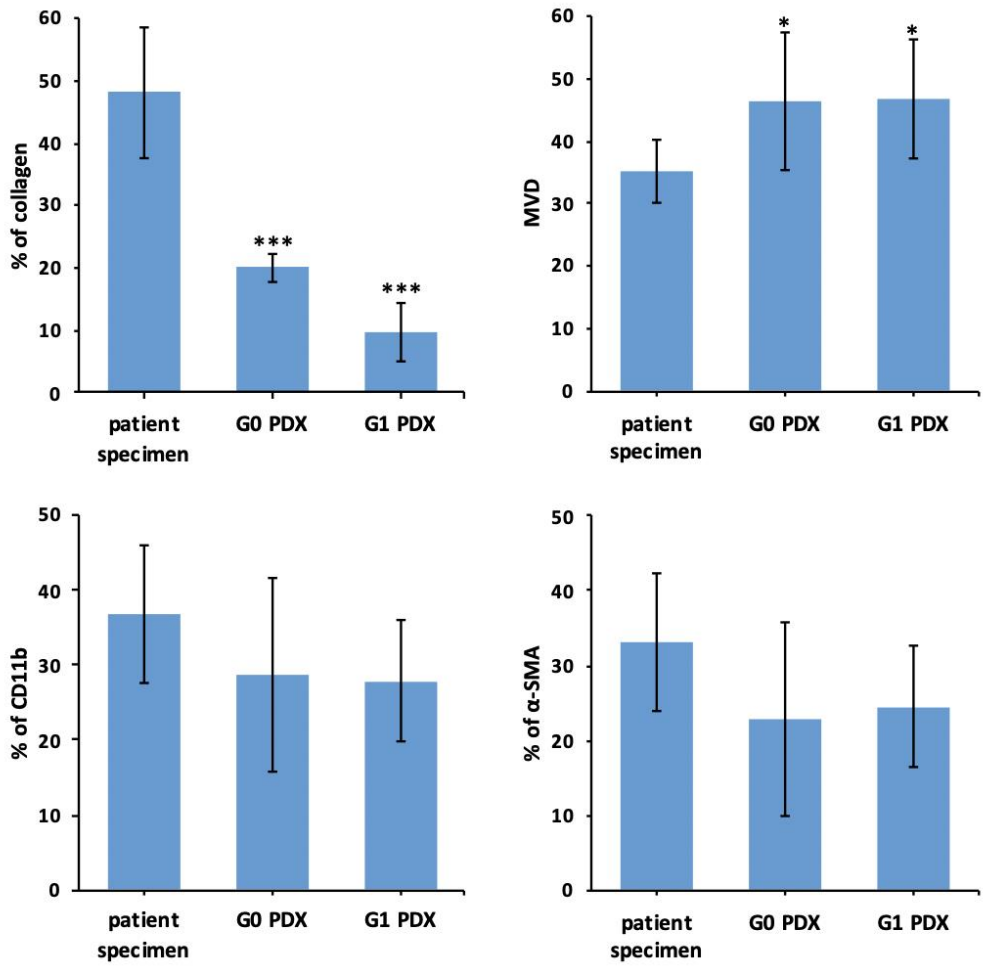
Figure S3. Size and polydispersity (PDI) of empty and DTX-PM in PBS 7.4 at 37 °C.



1
2 **Figure S4.** Flow cytometry analysis of apoptosis and cell cycle arrest of SGC7901 cells
3 induced by DTX and DTX-PM.

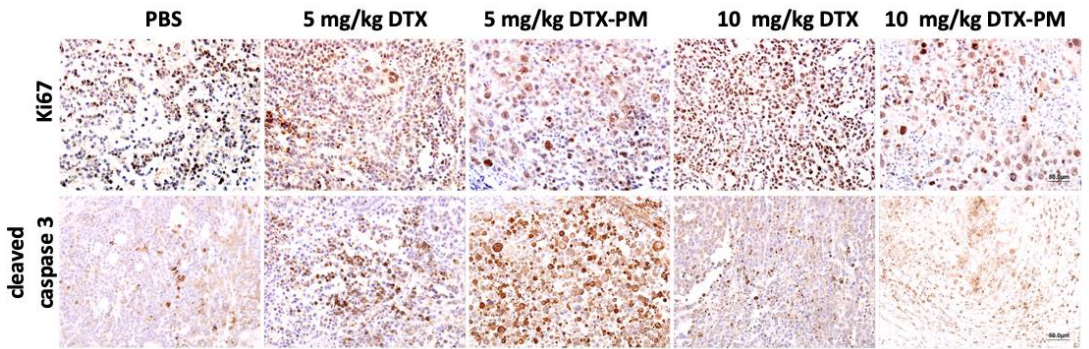


6
7 **Figure S5.** Microscopic images of SGC7901 cell migration and invasion when treated with
8 DTX formulations.



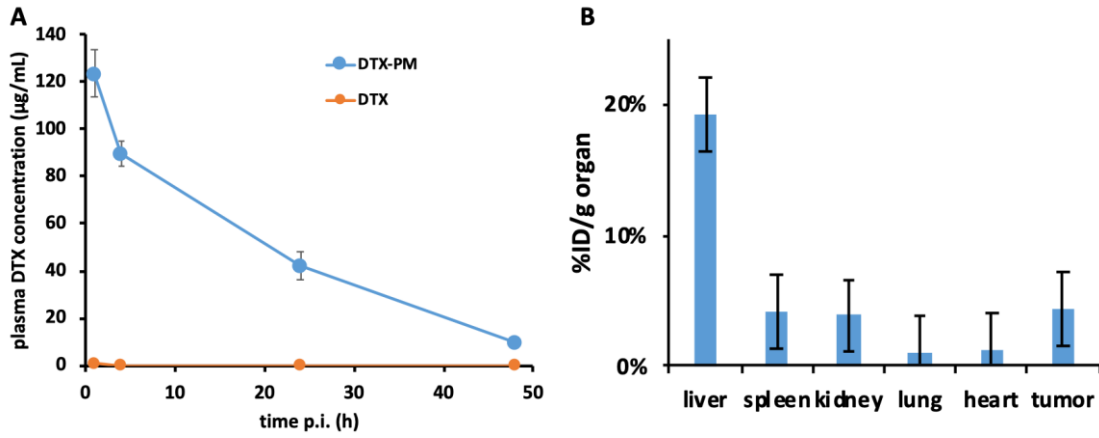
1

2 **Figure S6.** Analysis of phenotypes of patient tumor specimen and G0 and G1 PDX models.



3

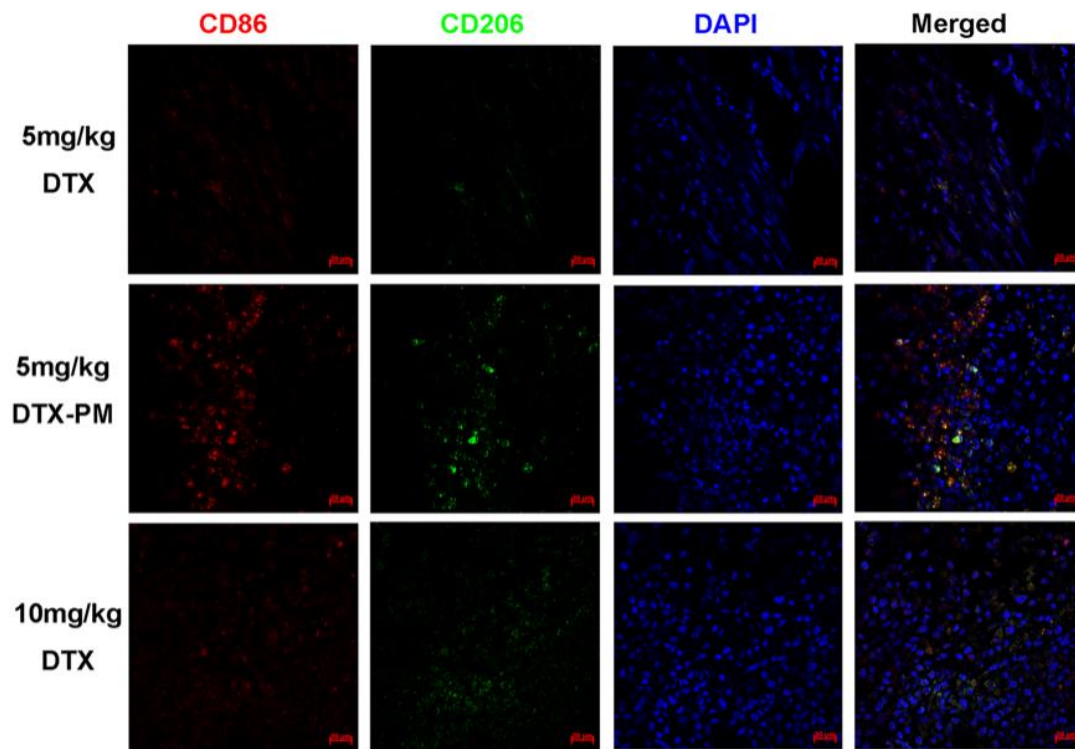
4 **Figure S7.** Microscope images of tumor samples for analyses of proliferation (Ki67) and
 5 apoptosis (cleaved caspase 3) of the subcutaneous CDX model after treatment.



1

2 **Figure S8.** In vivo pharmacokinetics (A) of DTX-PM and DTX, as well as biodistribution (B)
 3 of DTX-PM at 48 hours post-injection.

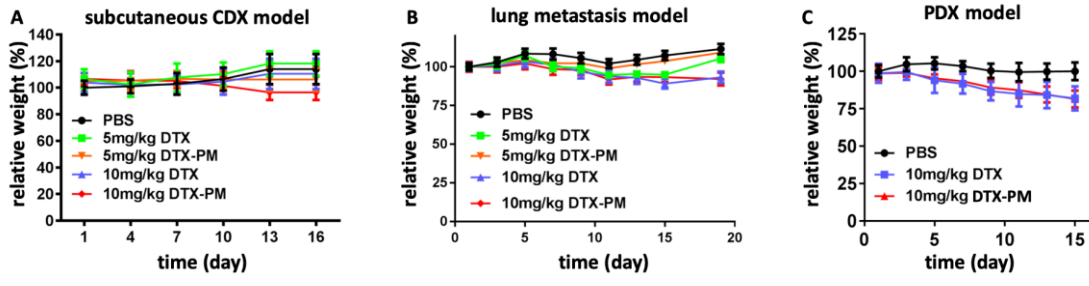
4



5

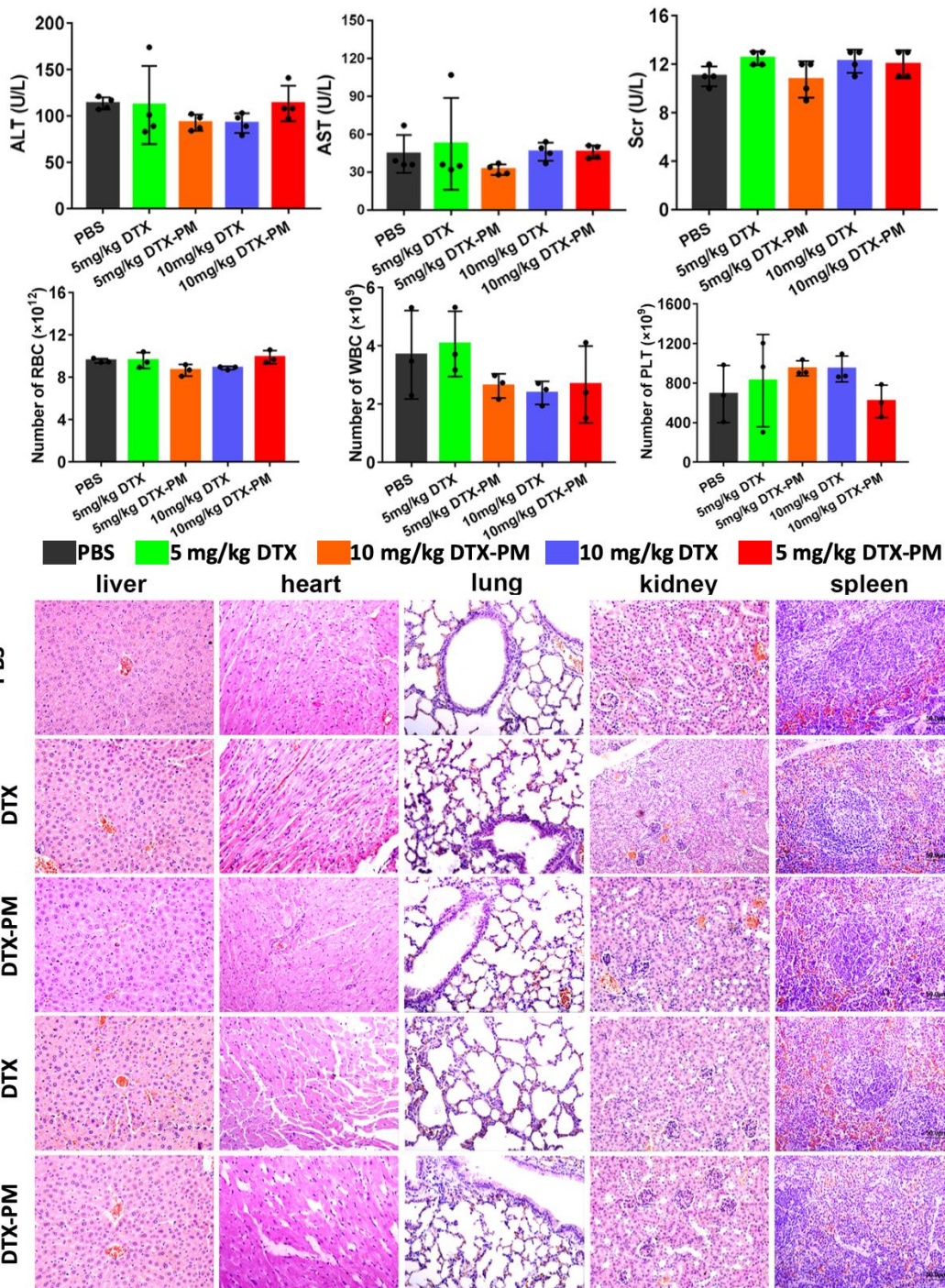
6 **Figure S9.** Immunofluorescence analysis of phenotypes of tumor-associated
 7 macrophages (TAM) in the PDX model after treatment.

8



1

2 **Figure S10.** Body weight changes of mice treated with the different formulations.



1

2 **Figure S11.** Serum concentrations of alanine aminotransferase (ALT), aspartate
 3 aminotransferase (AST) and serum creatinine (SCr), numbers of red blood cells (RBC),
 4 white blood cells (WBC), platelets (PLT) and H&E staining of major organs in mice from
 5 the subcutaneous CDX model after treatment.

6

1 **Table S1.** Technical information of antibodies used in the study.

Antibody	Suppliers	Product code
Recombinant Anti-CD86 antibody [EPR21962]	Abcam	ab239075
Anti-Mannose Receptor antibody (CD206)	Abcam	ab8918
Anti-CD11b antibody [EPR1344] (Alexa Fluor® 647)	Abcam	ab204471
Alpha-Smooth Muscle Actin Monoclonal Antibody (1A4), Alexa Fluor 488	Thermo Fisher	53-9760-80
Cleaved-Caspase 3 (Asp175), p17 Antibody	Affinity	bf0711
Anti-Ki67 antibody	Abcam	ab15580
Recombinant Anti-CD31 antibody [EP3095]	Abcam	ab134168

2

3

4