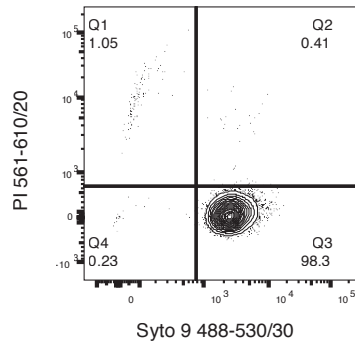
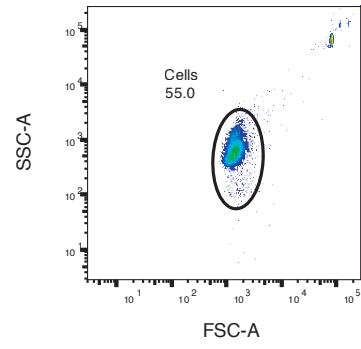
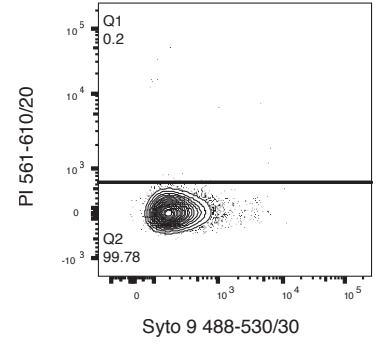
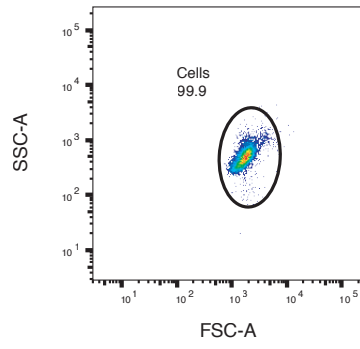


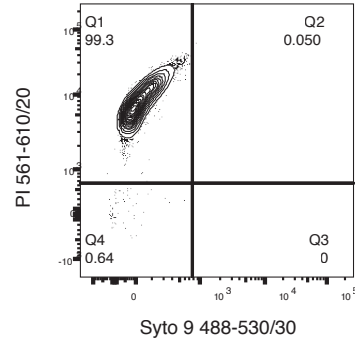
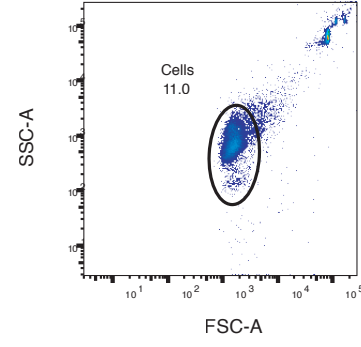
*B. vulgatus* - Live cells control



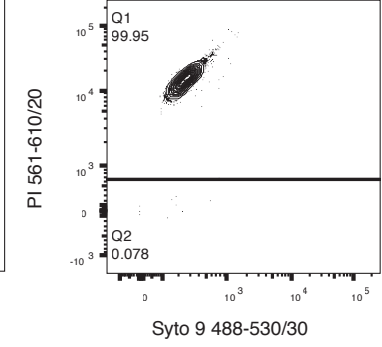
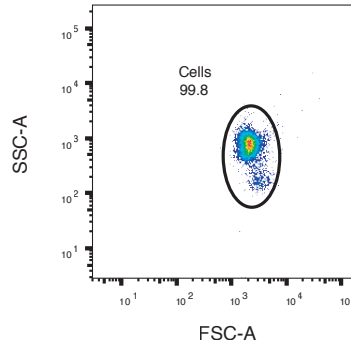
*E. coli* ED1a - Live cells control



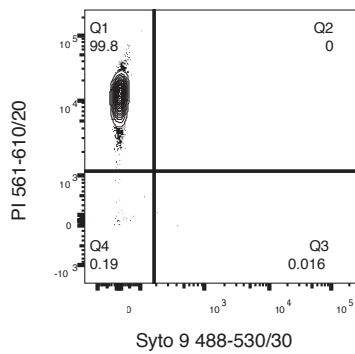
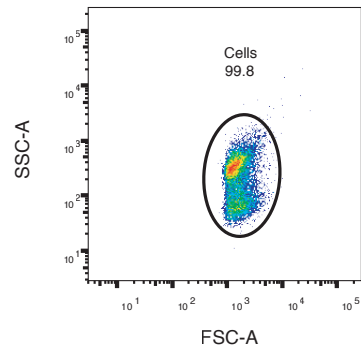
*B. vulgatus* - Dead cells control



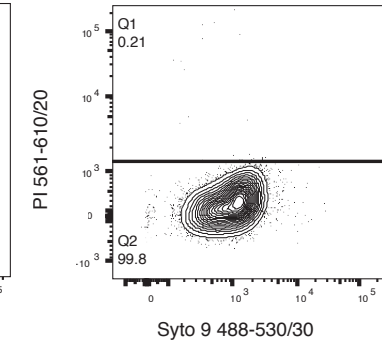
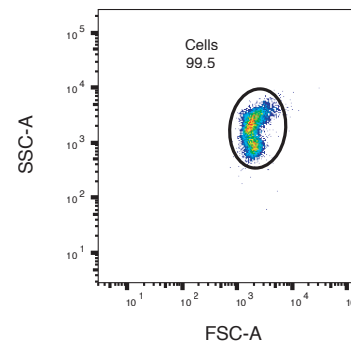
*E. coli* ED1a - Dead cells control



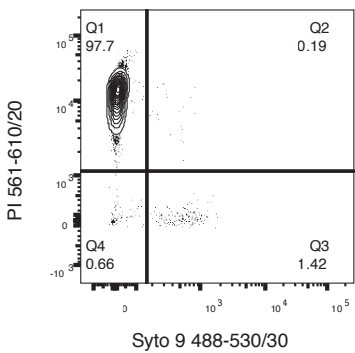
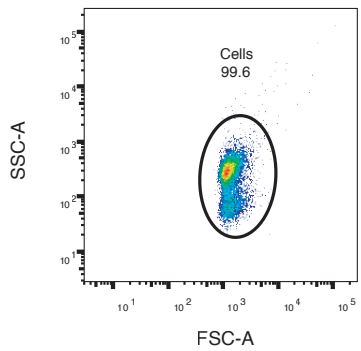
*B. vulgatus* - Erythromycin



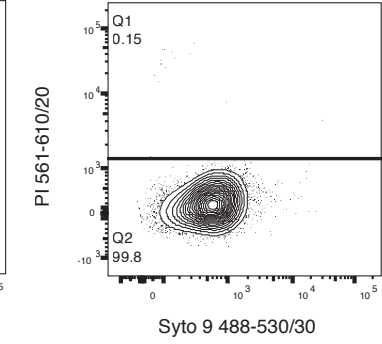
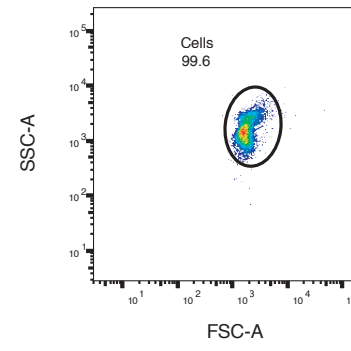
*E. coli* ED1a - Erythromycin



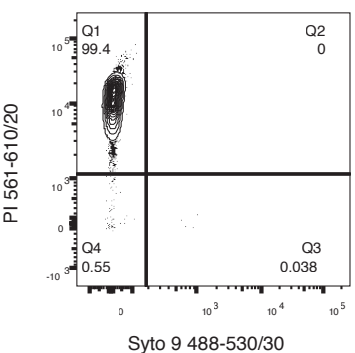
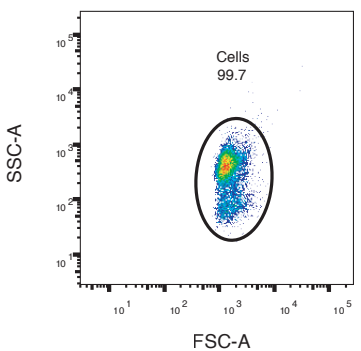
*B. vulgatus* - Azithromycin



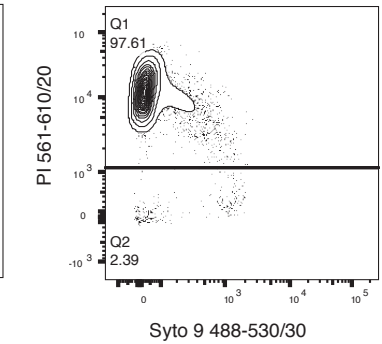
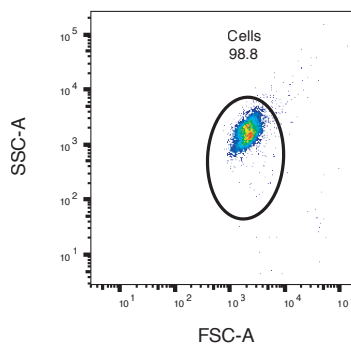
*E. coli* ED1a - Azithromycin



*B. vulgatus* - Doxycycline



*E. coli* ED1a - Doxycycline



# Supplementary Figure 1

Illustration of the gating strategy