

The effects of an IL-21 receptor antagonist on the alloimmune response in a humanized mouse skin transplant model

Kitty de Leur, MSc^{1,2}, Franka Luk, MSc¹, Thierry P.P. van den Bosch, PhD³, Marjolein Dieterich, BSc¹, Luc J.W. van der Laan, PhD², Rudi W. Hendriks, PhD⁴, Marian C. Clahsen - van Groningen, MD, PhD³, Fadi Issa, MD, PhD⁵, Carla C. Baan, PhD¹,
Martin J. Hoogduijn, PhD¹

¹The Rotterdam Transplant Group, Department of Internal Medicine, ²Department of Surgery, ³Department of Pathology, ⁴Department of Pulmonary Medicine, Erasmus MC, University Medical Center Rotterdam, The Netherlands, ⁵Nuffield Department of Surgical Sciences, Transplantation Research Immunology Group, University of Oxford, United Kingdom

Supplemental Figures

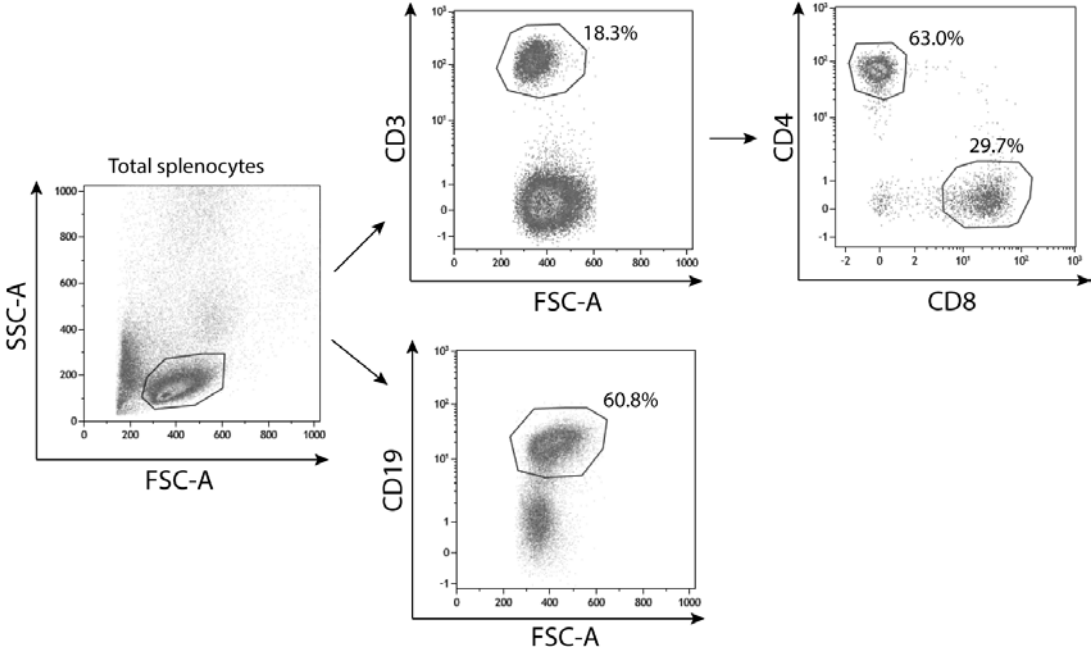


Figure S1.

Composition of splenocyte subsets used for adoptive cellular transfer

Dot plots depicting the proportions of CD3⁺ T cells, CD4⁺ and CD8⁺ T cells within the total CD3⁺ T cell population, and CD19⁺ B cells. Proportions of the different lymphocyte populations are depicted within the dot plots.