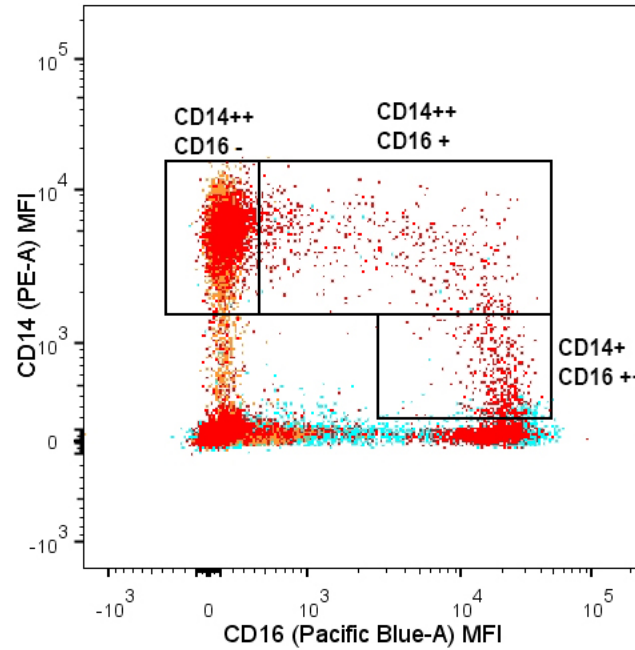
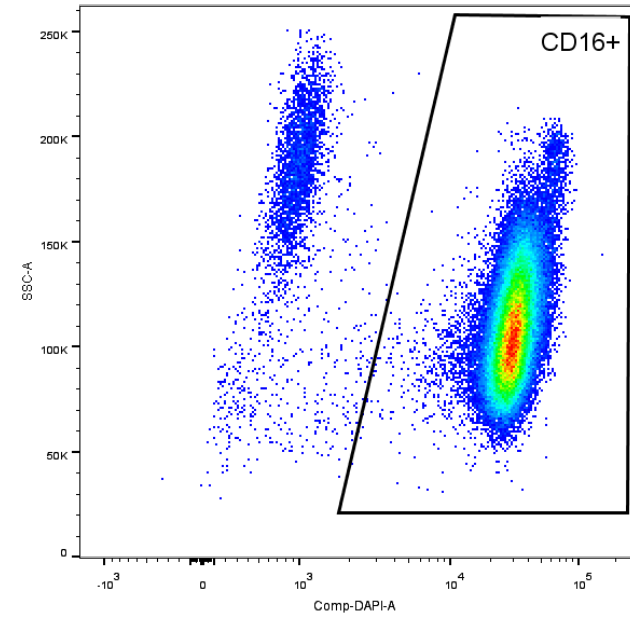


Monocytes

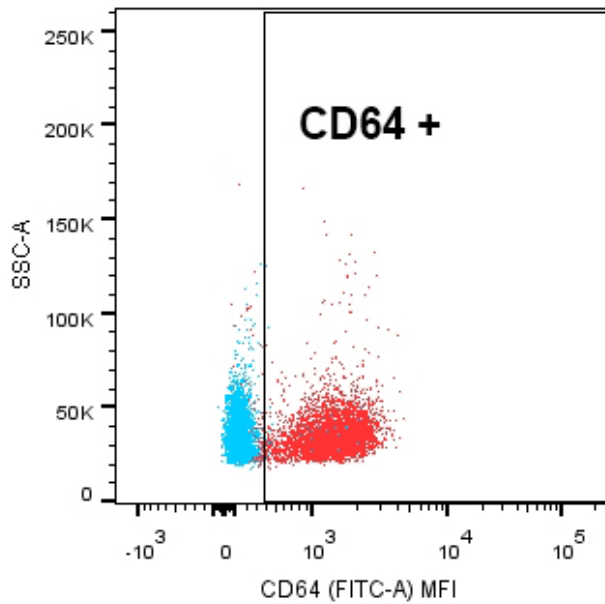
Neutrophils



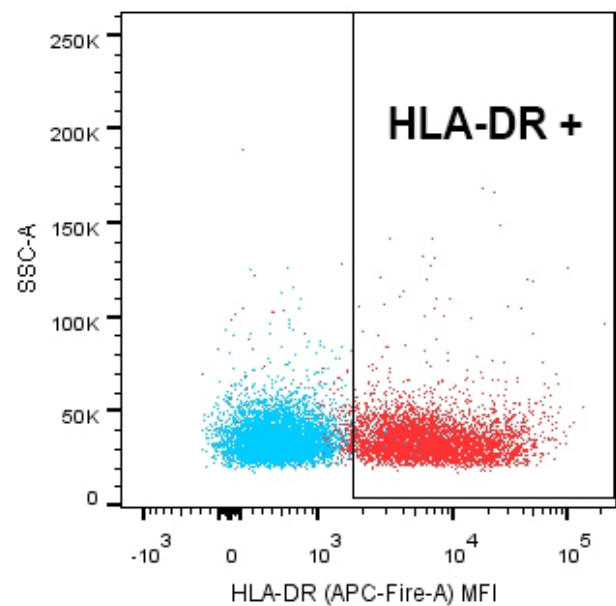
CD14 (PE) CD16 (Pacific Blue) staining	
■	Fully Stained
■	FMO Isotype control CD16
■	FMO Isotype Control CD14



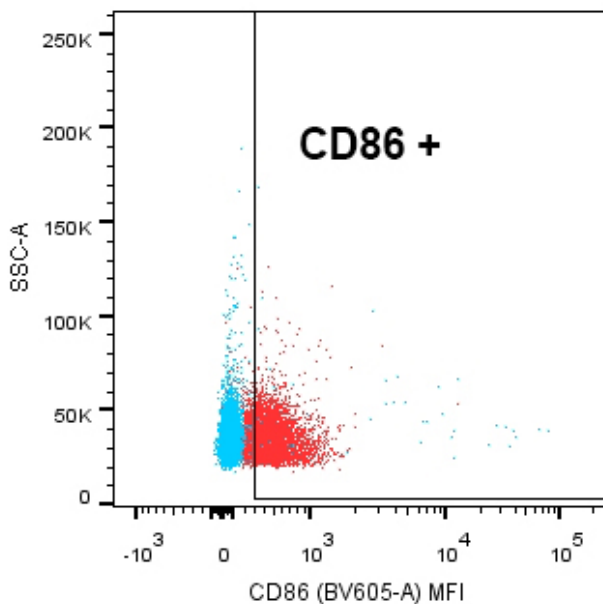
Gating strategy of monocyte/neutrophil populations using FMO isotype controls:



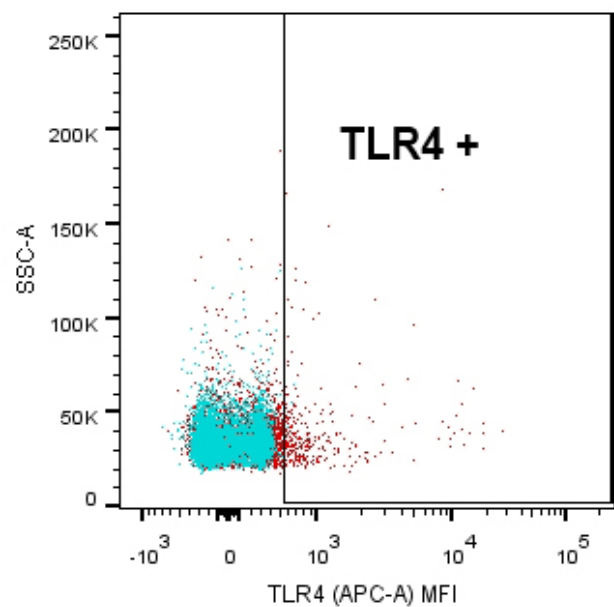
	CD64 (FITC) staining	% CD64 +ve
	FMO isotype control	0.65%
	stained sample	96.4%



	HLA-DR (APC-Fire) staining	% HLA-DR positive
	FMO isotype control	0.34%
	stained sample	92.8%



	CD86 (BV-605) staining	%CD86 positive
	FMO isotype control	0.73%
	stained sample	67.3%



	TLR4 (APC) Staining	%TLR4 positive
	FMO isotype control	0.15%
	stained sample	4.21%