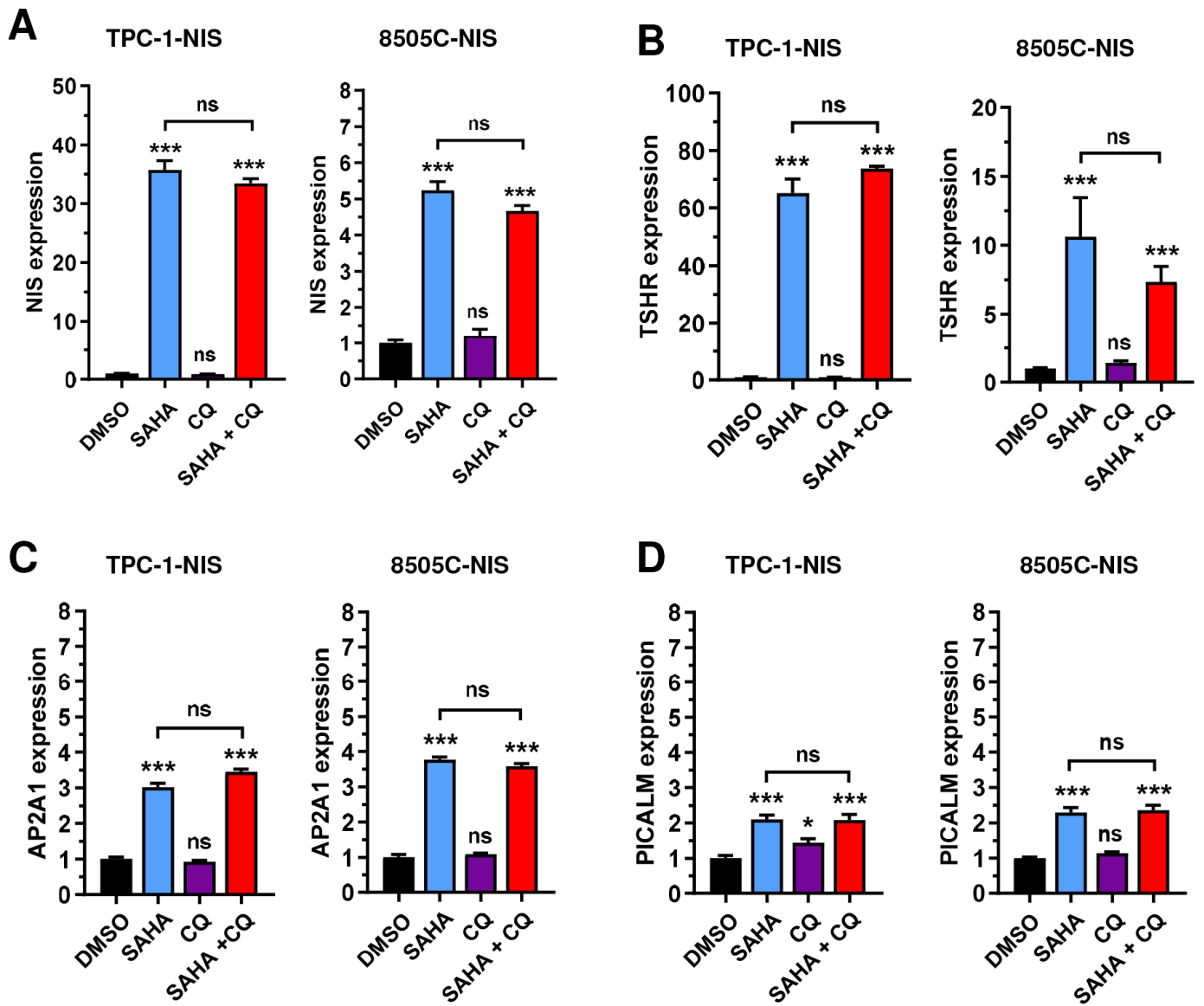


**SUPPLEMENTARY FIGURE S11**



**Figure S11.** Transcriptional drug responses in thyroid cancer cells. **A-D**, Relative NIS (**A**), TSHR (**B**), AP2A1 (**C**) and PICALM (**D**) mRNA levels in TPC-1-NIS and 8505C-NIS cells treated with CQ and SAHA either alone or in combination. Data presented as mean  $\pm$  S.E.M., one-way ANOVA followed by Tukey's post hoc test (ns, not significant; \* $P < 0.05$ ; \*\*\* $P < 0.001$ ).