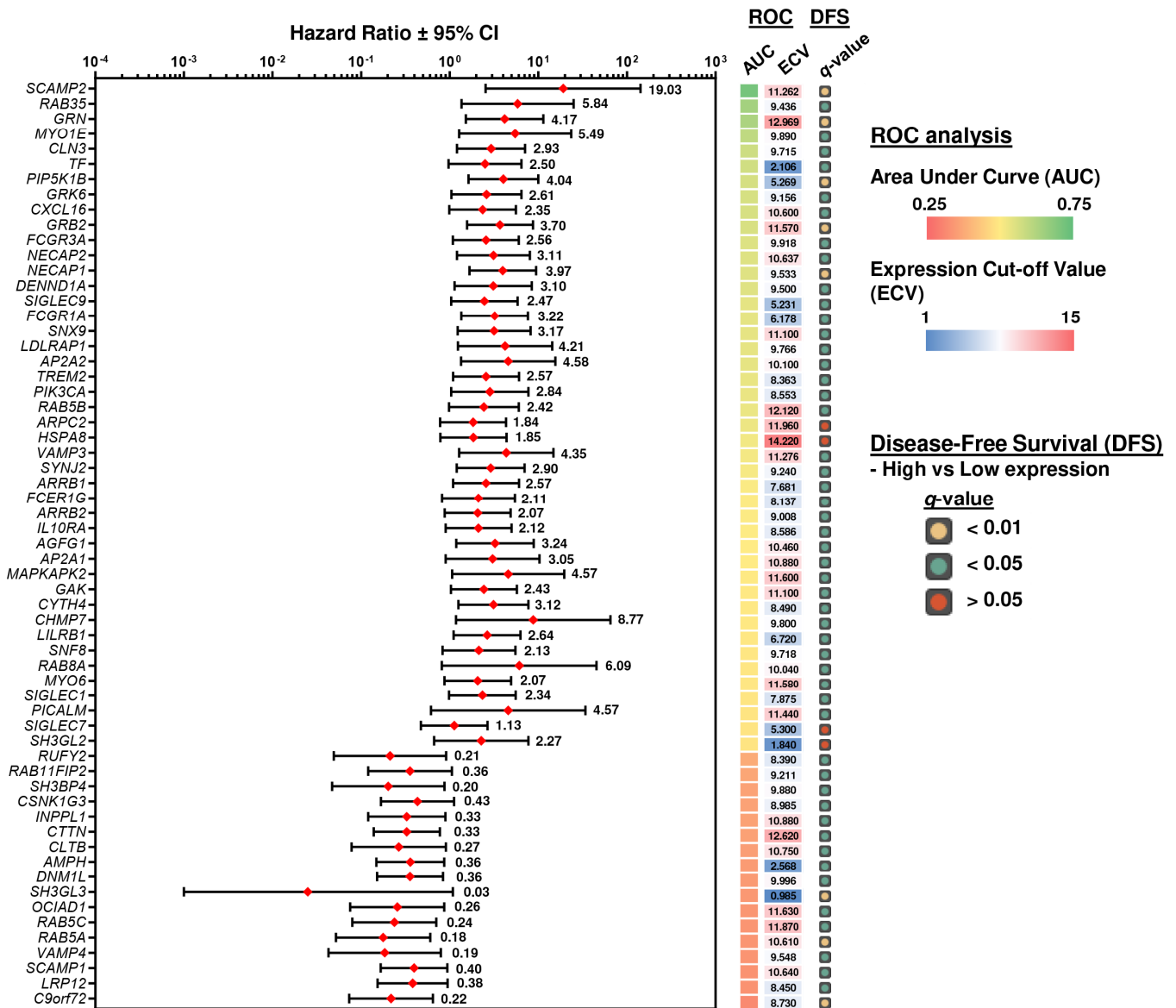


SUPPLEMENTARY FIGURE S7

A THCA: BRAF-like RAI-treated ($n = 137$)



B THCA: BRAF-like RAI-treated ($n = 137$)

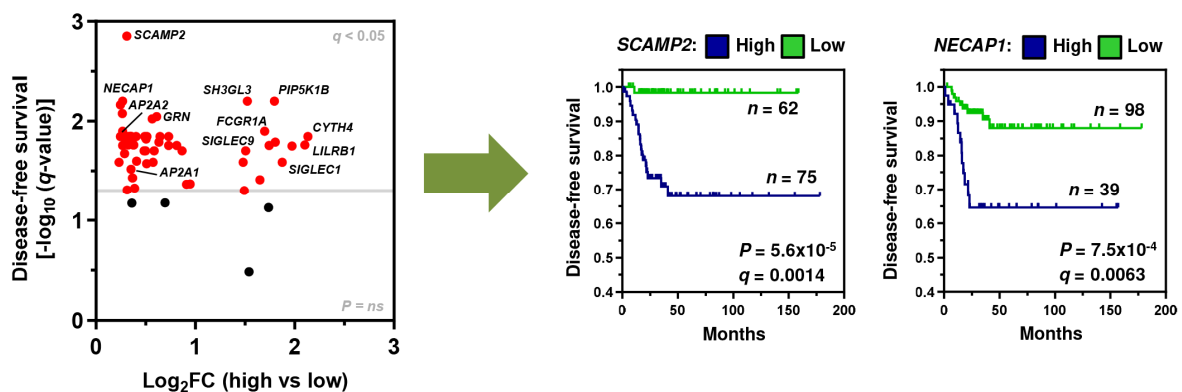


Figure S7. Comparison of the clinical relevance of filtered endocytic genes. **A**, Univariate Cox regression and ROC analysis of endocytic genes in BRAF-like, RAI treated THCA ($n = 137$) with AUC > 0.575 or < 0.425 ($n = 61$ out of 137 filtered endocytic genes fit this criteria). AUC, area under curve; ECV; expression cut-off value used for patient cohort stratification; DFS, disease-free survival; CI, confidence interval. **B**, Volcano plot illustrating log₂FC in BRAF-like, RAI-treated THCA cohort (high vs low expression) compared to q -value ($-\log$ base 10) of recurrence for 61 endocytic genes ($q < 0.05$). (right) Representative Kaplan-Meier analysis of DFS for the BRAF-like, RAI treated THCA cohorts stratified on high vs low tumoural expression of *SCAMP2* and *NECAP1*; log-rank test. Number (n) of patients per sub-group (high/low), as well as P - and q -values are shown.