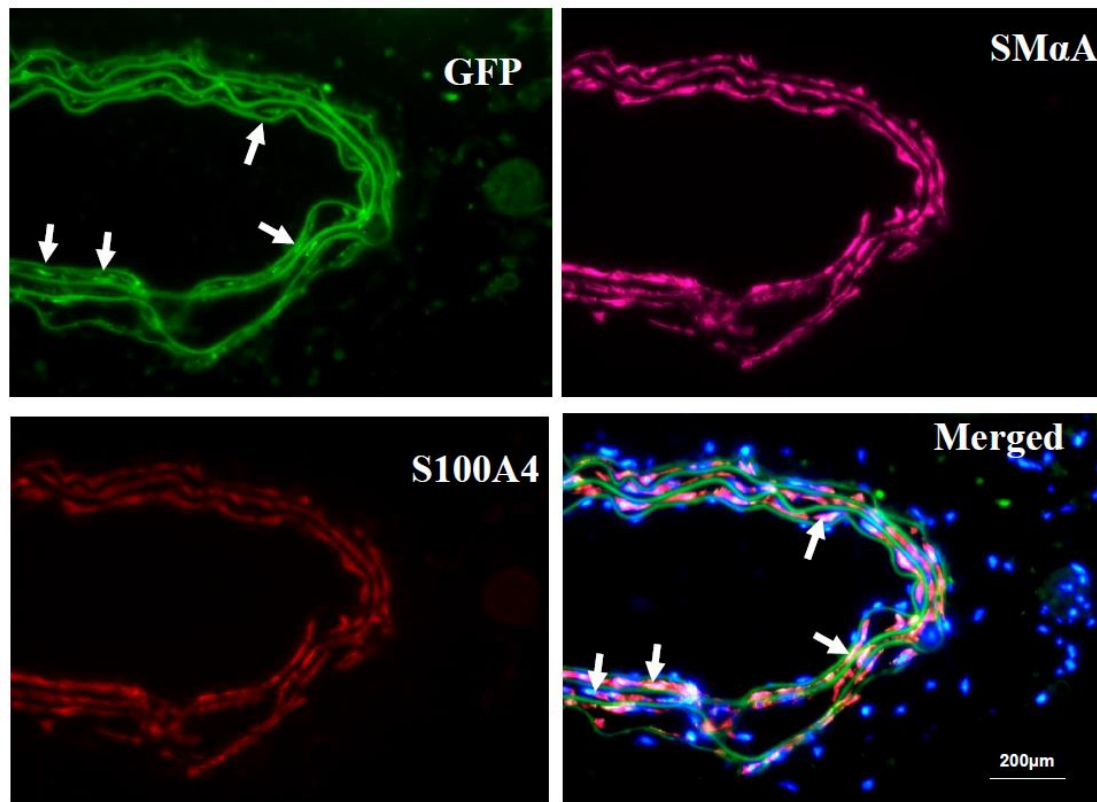


Figure S9. Transplanted AdSPCs differentiate toward iSMCs during arterial remodelling.



After injury, 100μl of Geltrex contained 1×10^6 AdSPCs infected with Lenti-GFP per vessel per mice was immediately applied and packed around injured vessel. One week later, injured segments of femoral arteries were harvested and prepared, followed by triple immunofluorescence staining with antibodies against GFP, SMαA and S100A4. White arrows within merged image indicate iSMCs derived from transplanted AdSPCs. Data presented here are representative images from three mice.