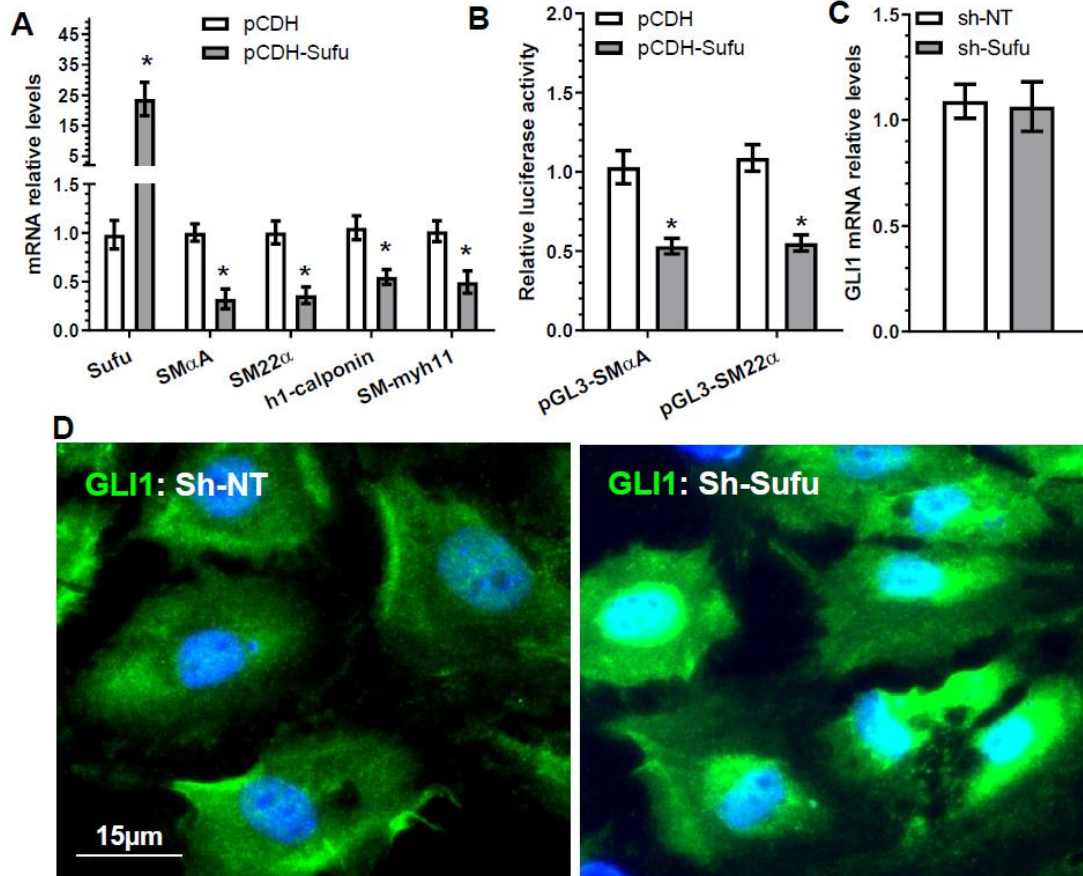


Figure S6. Sufu controls SMC gene expression and GLI1 cellular location.



(A) SMC gene expression is negatively regulated by Sufu. AdSPCs (p3~p8) were infected with control (pCDH) or Sufu over-expression (pCDH-Sufu) lentivirus and cultured in iSMC differentiation induction medium for 2~3 days. The expression levels of a panel of SMC specific genes was examined by RT-qPCR analysis. (B) Sufu over-expression inhibited SMC gene promoter activity. AdSPCs infected with pCDH or pCDH-Sufu were transfected with SMC gene promoter reporters (pGL3-SM α A or SM22 α) as indicated. Luciferase activity assays were conducted at 48 hours post-transfection. (C) GLI1 gene expression was not affected by Sufu over-expression. (D) Sufu knockdown promotes GLI1 protein accumulation in nuclei. AdSPCs were infected with non-target (sh-NT) or Sufu (sh-Sufu) shRNA lentivirus, followed by iSMC differentiation. Cells were fixed and subjected to immunofluorescence staining with GLI1 antibody. Data presented here are representative images (D) or Mean \pm S.E.M of five or six independent experiments (n=5 or 6, unpaired t-test).