

Online Data Supplement

Chest CT and Clinical Follow-up of Discharged Patients with COVID-19 in Wenzhou City, Zhejiang, China

Chenbin Liu, Ling Ye, Ruike Xia, Xudong Zheng, Cuiyun Yuan, Zhenguo Wang, Ruiwu Lin, Deen Shi, Yuantong Gao, Junpu Yao, Qingfeng Sun, Xiaoyang Wang, and Meiling Jin

Table E1. The discharge criteria for COVID-19 confirmed patients

-
- (i) Body temperature is back to normal for more than three days
 - (ii) Respiratory symptoms improved obviously
 - (iii) Pulmonary imaging shows obvious absorption
 - (iv) Two consecutive negative nucleic acid tests for respiratory specimens
(sampling interval being at least 24 hours)
-

Table E2. Clinical characteristics of male patients

Age, years	46.9 ± 14.9 (21~70)
Male	21
Smoking	3 (14.3%)
Comorbidity	4 (19.1%)
Diabetes	3 (14.3%)
Hypertension	3 (14.3%)
Coronary heart disease	1 (4.8%)
Symptoms after 4 weeks post-discharge	
cough	3 (14.3%)
sputum	1 (4.8%)
throat discomfort	2 (9.5%)

Table E3. Clinical characteristics of female patients

Age, years	46.7 ± 13.6 (14~68)
Male	30
Smoking	0
Comorbidity	4 (13.3%)
Diabetes	1 (3.3%)
Hypertension	4 (13.7%)
Coronary heart disease	0 (2%)
Pregnancy	1 (3.3%)
Symptoms after 4 weeks post-discharge	
cough	5 (16.7%)
sputum	1 (3.3%)
throat discomfort	1 (3.3%)

Table E4. Comparison of the laboratory test at admission between partially and fully recovered groups in the 1st CT scan after discharge

	Partially absorbed (n=37)	Fully absorbed (n=12)	P-value
Leu ($\times 10^9/L$)	5.53 \pm 1.06	6.14 \pm 1.47	0.12
Lym ($\times 10^9/L$)	1.78 \pm 0.44	2.10 \pm 0.72	0.07
Neu ($\times 10^9/L$)	3.13 \pm 0.72	3.40 \pm 1.06	0.34
PLT ($\times 10^9/L$)	236.8 \pm 51.84	235.7 \pm 87.51	0.33
ALT (IU/L)	50.0 \pm 40.11	53.25 \pm 38.1	0.72
AST (IU/L)	33.19 \pm 23.34	29.25 \pm 12.81	0.94
LDH (u/dl)	175.8 \pm 43.88	157.5 \pm 17.09	0.15
BUN (mmol/L)	4.13 \pm 0.92	4.58 \pm 1.07	0.16
Cr (umol/L)	57.19 \pm 10.86	64.67 \pm 14.18	0.06

Leu: Leucocyte; Lym: lymphocyte; Neu: neutrophil; PLT: Platelet; ALT: alanine aminotransferase; AST: aspartate transaminase; LDH: lactate dehydrogenase; BUN: Blood urea nitrogen; Cr: Creatinine.

Table E5. Comparison of the laboratory test at admission between partially and fully recovered groups in the 2nd CT scan after discharge

	Partially absorbed (n=18)	Fully absorbed (n=30)	P-value
Leu ($\times 10^9/L$)	5.7 \pm 1.78	5.45 \pm 1.30	0.58
Lym ($\times 10^9/L$)	1.86 \pm 0.64	1.82 \pm 0.62	0.83
Neu ($\times 10^9/L$)	3.31 \pm 1.34	3.1 \pm 0.82	0.56
PLT ($\times 10^9/L$)	233.6 \pm 60.02	232.7 \pm 59.88	0.96
ALT (IU/L)	41.56 \pm 33.62	41.47 \pm 34.02	0.85
AST (IU/L)	31.94 \pm 20.27	28.0 \pm 15.18	0.49
LDH (u/dl)	206.8 \pm 49.8	201.2 \pm 29.9	0.67
BUN (mmol/L)	4.66 \pm 1.20	4.44 \pm 1.07	0.50
Cr (umol/L)	66.72 \pm 8.08	63.33 \pm 8.51	0.18

Leu: Leucocyte; Lym: lymphocyte; Neu: neutrophil; PLT: Platelet; ALT: alanine aminotransferase; AST: aspartate transaminase; LDH: lactate dehydrogenase; BUN: Blood urea nitrogen; Cr: Creatinine.

Table E6. Comparison of symptoms after 4 weeks post-discharge between the recurring positive and negative patients.

Symptoms after 4 weeks post-discharge	Recurring positive (n=9)	Negative (n=42)	p-value
cough	3 (33.3%)	5 (11.9%)	0.21
sputum	1 (11.1%)	1 (2.4%)	0.27
throat discomfort	0	3 (7.1%)	0.39

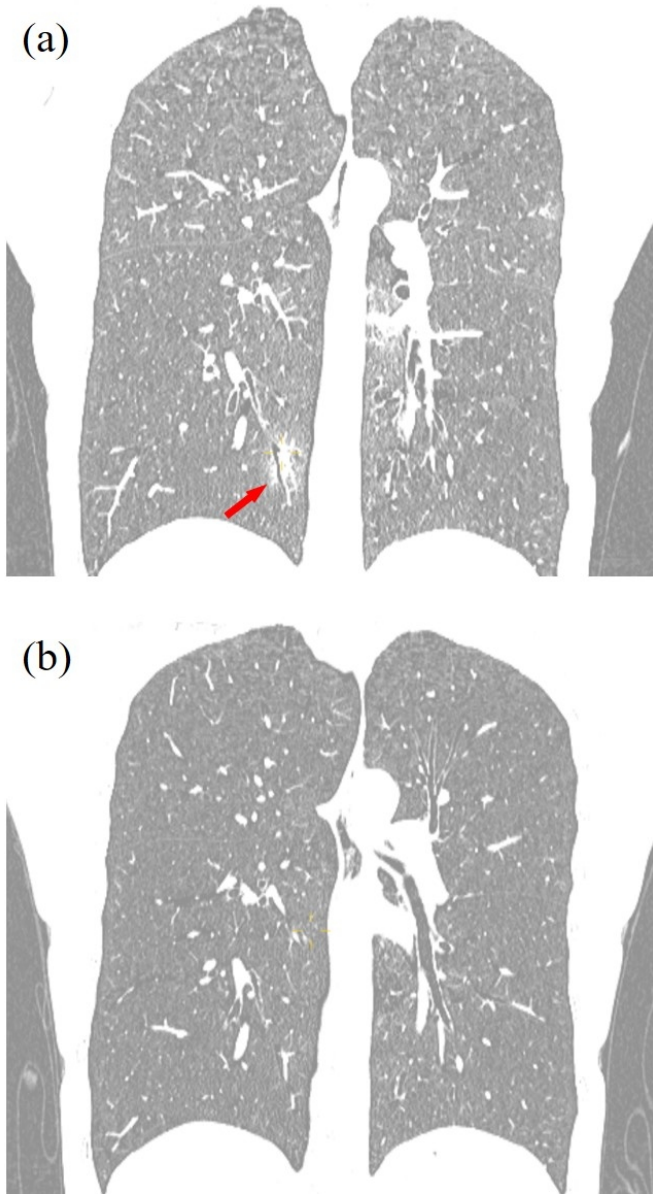
Note: p-values are obtained from Chi-square test

The symptoms (cough, sputum, and throat discomfort) were recorded after 4 weeks post-discharge, and the real-time reverse transcription-PCR tests were done after one and two weeks post-discharge. There was no significant difference in symptoms between the recurring positive and negative patients.

Table E7. Comparison of the length of hospital stay between the recurring positive and negative patients.

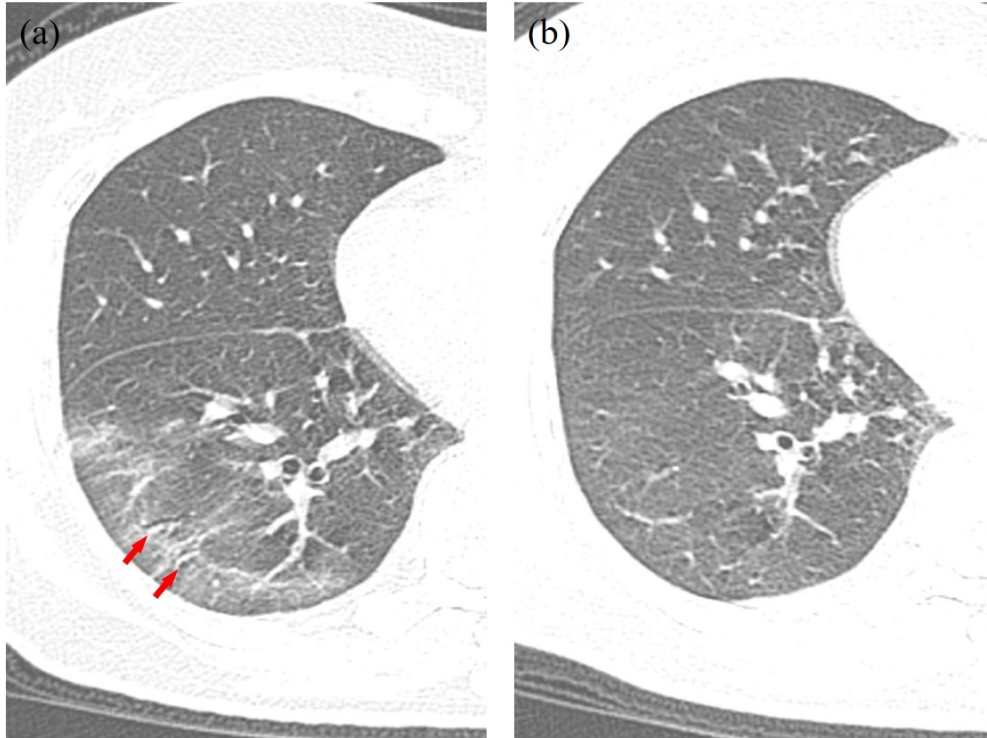
	Recurring positive (n=9)	Negative (n=42)	p-value
Length of hospital stay	14.56±5.67	12.83±4.58	0.25

Note: p-values are obtained from Wilcoxon rank sum test



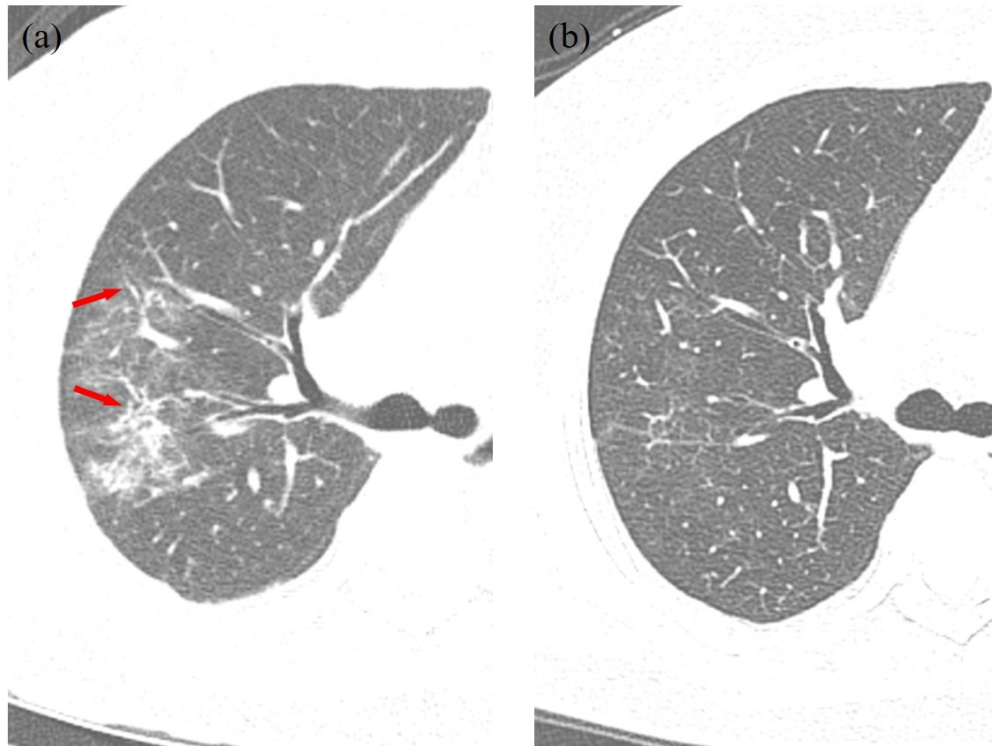
Supplemental Figure 1. The chest CT scans from a 41-year-old male COVID-19 patient. (a) the last chest CT before discharge. Bronchiectasis was shown in consolidation (red arrow). (b) the chest CT four weeks after the discharge. Both bronchiectasis and consolidation got recovered.

54x98mm (300 x 300 DPI)



Supplemental Figure 2. The chest CT scans from a 60-year-old male COVID-19 patient. (a) the last chest CT before discharge. Bronchiectasis was shown in GGO (red arrows). (b) the chest CT four weeks after the discharge. Both bronchiectasis and GGO got recovered.

94x70mm (300 x 300 DPI)



Supplemental Figure 3. The chest CT scans from a 68-year-old female COVID-19 patient. (a) the last chest CT before discharge. Bronchiectasis was shown (red arrows). (b) the chest CT four weeks after the discharge. The bronchiectasis got recovered.

95x71mm (300 x 300 DPI)