

Supplementary Figure S3

H&E

KRT1

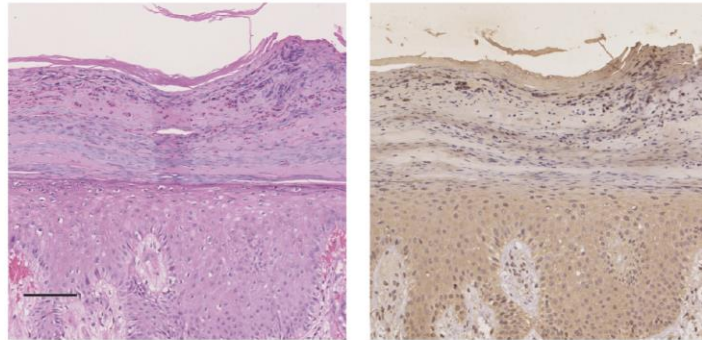


Fig. S3 Histopathologic aspect with patient skin biopsy specimens.

Skin sections from patient 6, a 60-year-old woman with metastatic thyroid carcinoma.

Representative H&E staining and KRT1 immunohistochemistry staining were performed.

Scale bar, 100 μ m.