

Supplementary Figure S5

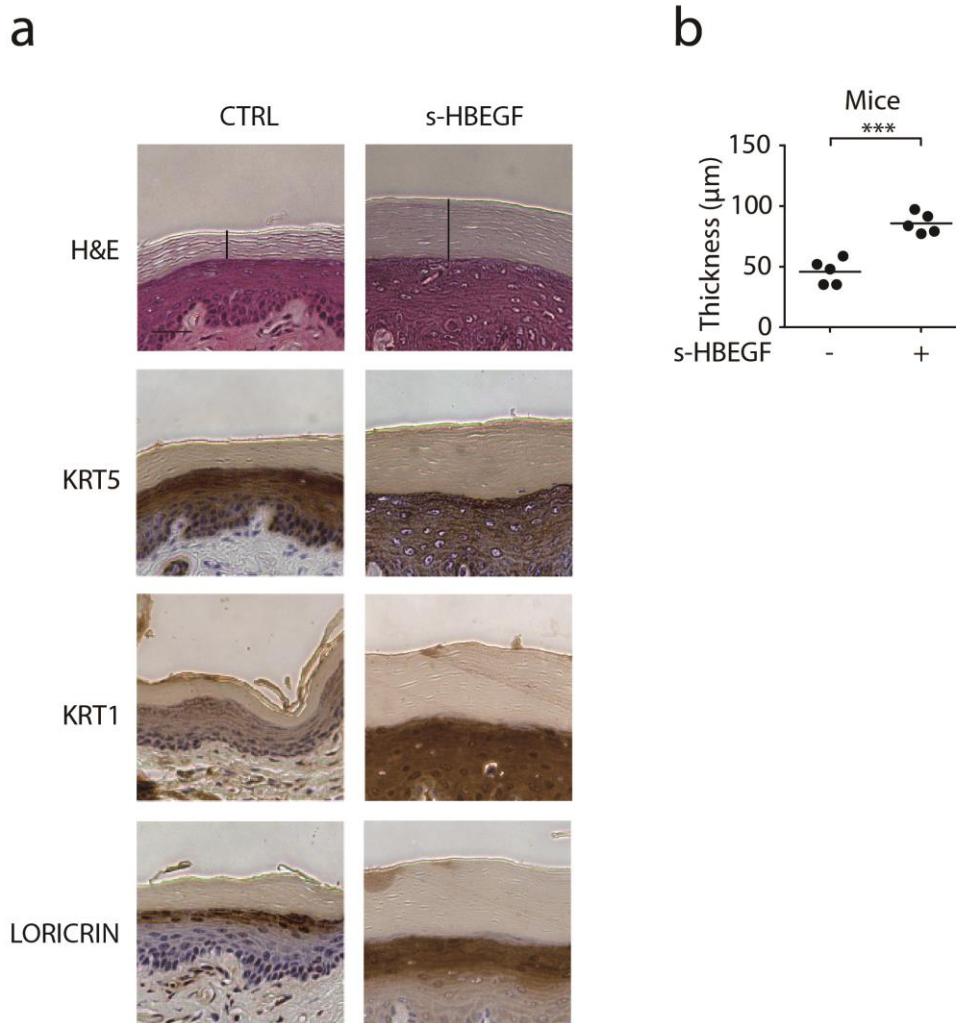


Fig. S5 s-HBEGF could induce hyper-keratinization in mice.

Mice were injected with or without s-HBEGF (25 ng per mouse) via tail vein for 30 days. **a** Representative H&E staining and KRT5, KRT1, LORICRIN immunohistochemistry staining were performed on the stratum corneum of mice. Scale bar, 50 µm. **b** Quantitative analysis of epidermal hyper-keratosis assessed by measuring the stratum corneum thickness. Horizontal bars in (b) represent mean values. Statistical analyses were performed using unpaired two-tailed Student's t-test in (b). *** $P < 0.001$.