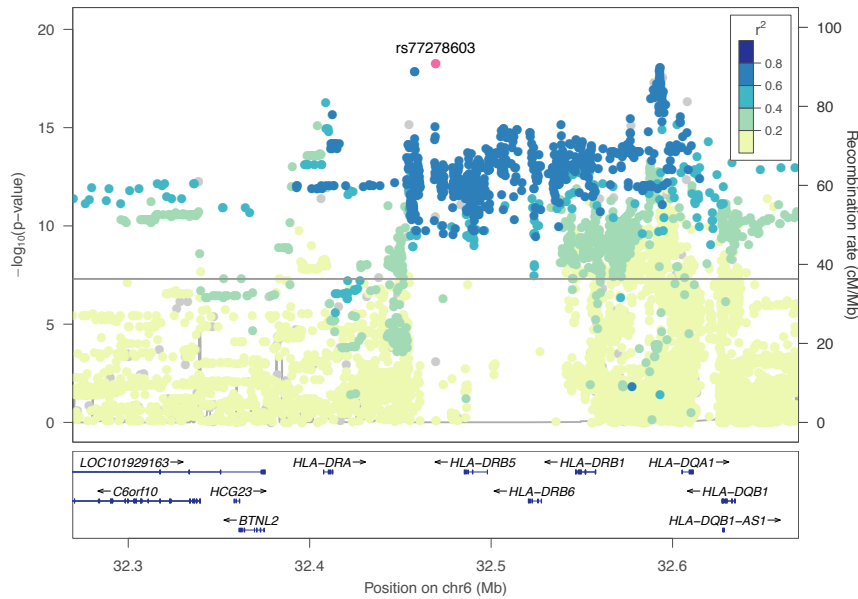


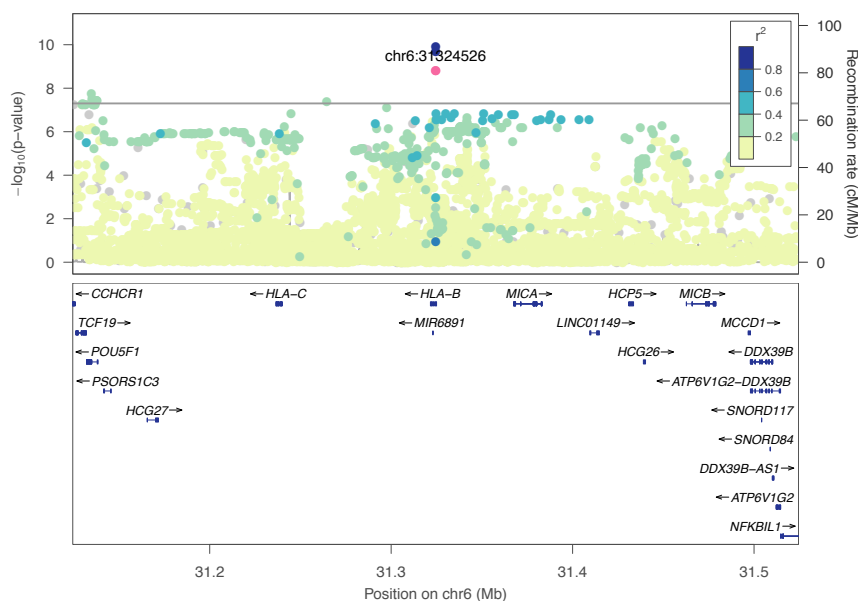
**Regional association plots of replicated and top pooled GWAS variants in the analysis of IFNβ-1a s.c.-treated patients.**

Regional association plots of variants from the GWAS generated using LocusZoom v1.4 and the 1000 Genomes 1000G\_Nov2014 EUR reference panel. The color of dots indicates LD with the lead variant (pink). Gray dots represent signals with missing LD  $r^2$  values. If no LD information was present in the database on the top variant, LD with the variant showing the second-lowest  $p$ -value is indicated. The grey line indicates genome-wide significance. cM: centimorgan, chr: chromosome, Mb: mega base pairs.

Regional association plot for variant rs77278603 in the analysis of **nADA presence** in the **discovery-stage** GWAS of IFNβ-1a s.c.-treated patients.

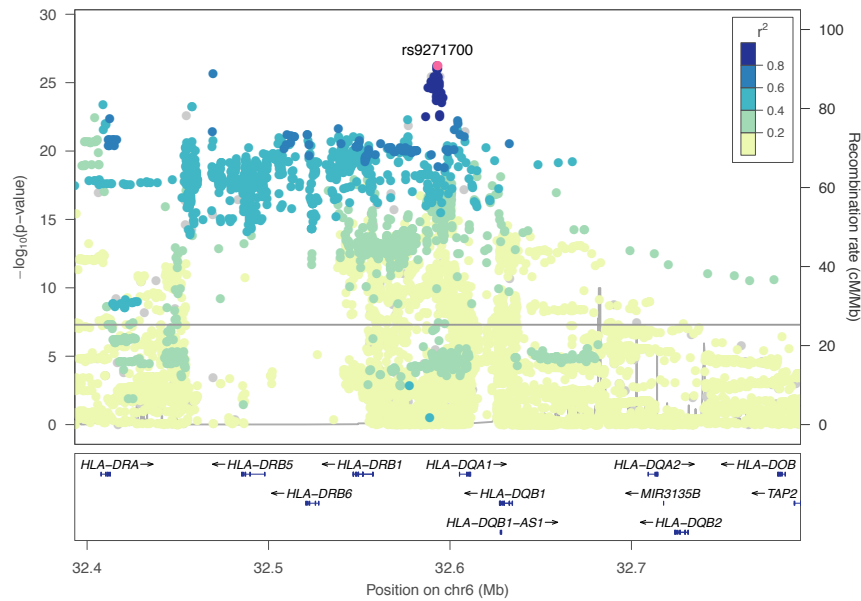


Regional association plot for variant rs1131204 in the analysis of **nADA presence** in the **discovery-stage** GWAS of IFNβ-1a s.c.-treated patients. LD information is shown for variant chr6:31324526 instead of rs1131204.

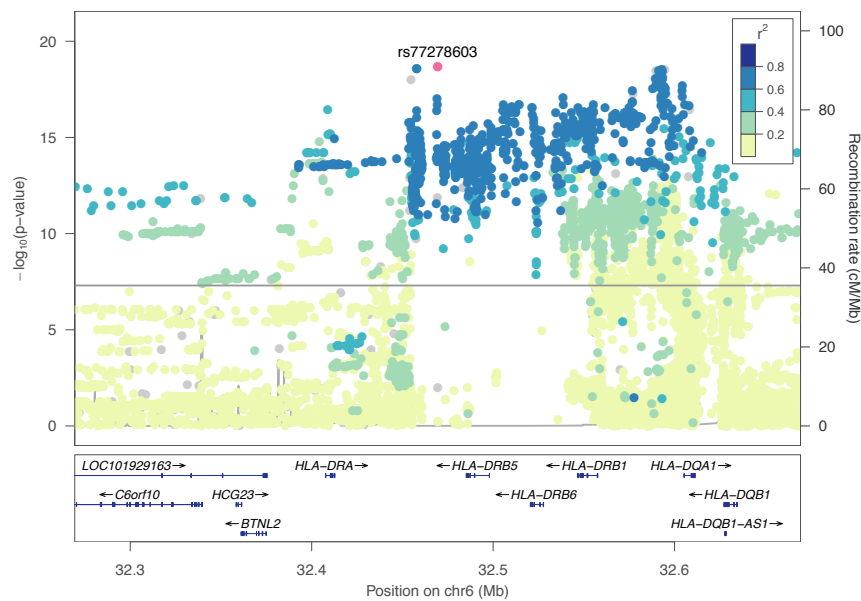


## Genetic risk for anti-drug antibodies against interferon-beta – Regional association plots

Regional association plot for variant rs9271700 in the analysis of **nADA presence** in the pooled **discovery + replication** GWAS of IFN $\beta$ -1a s.c.-treated patients.

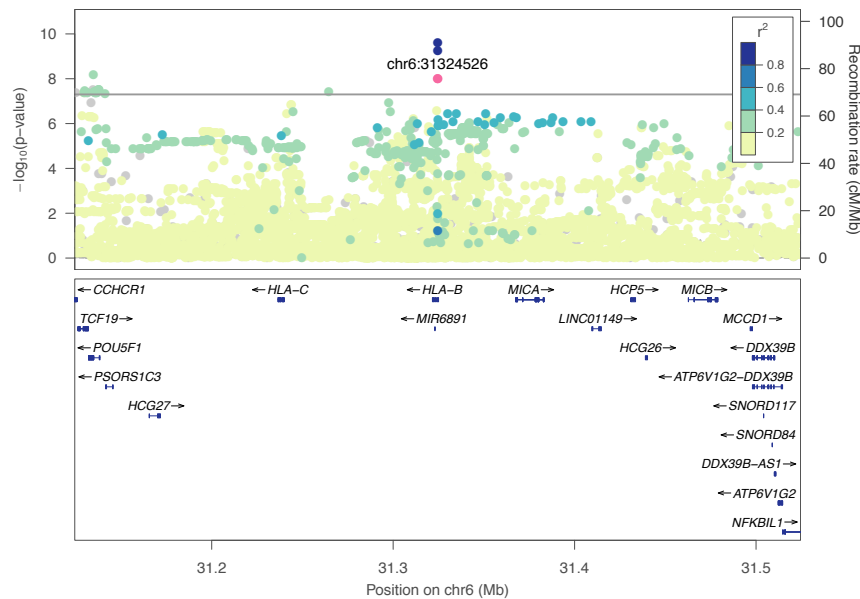


Regional association plot for variant rs77278603 in the analysis of **nADA titers** in the **discovery-stage** GWAS of IFN $\beta$ -1a s.c.-treated patients.

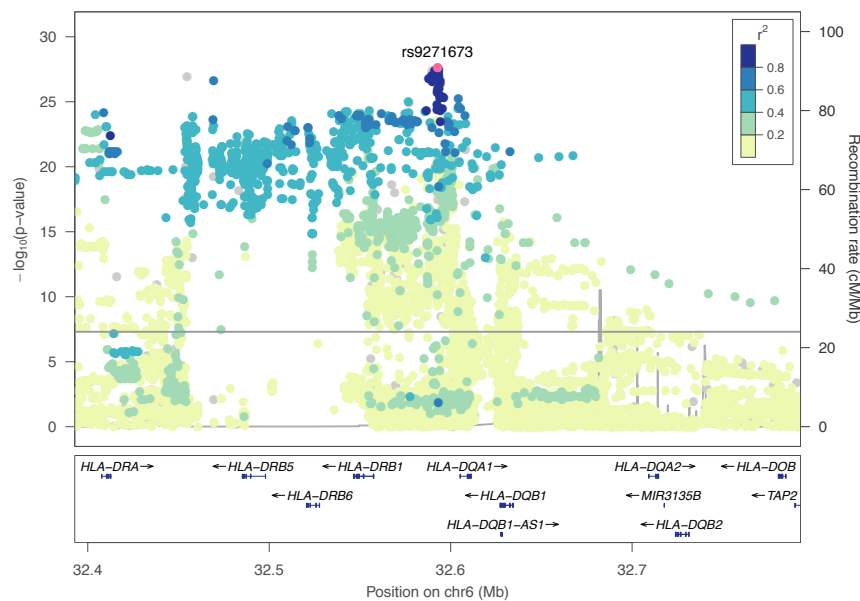


## Genetic risk for anti-drug antibodies against interferon-beta – Regional association plots

Regional association plot for variant rs1131204 in the analysis of **nADA titers** in the **discovery-stage** GWAS of IFN $\beta$ -1a s.c.-treated patients. LD information is shown for variant chr6:31324526 instead of rs1131204.

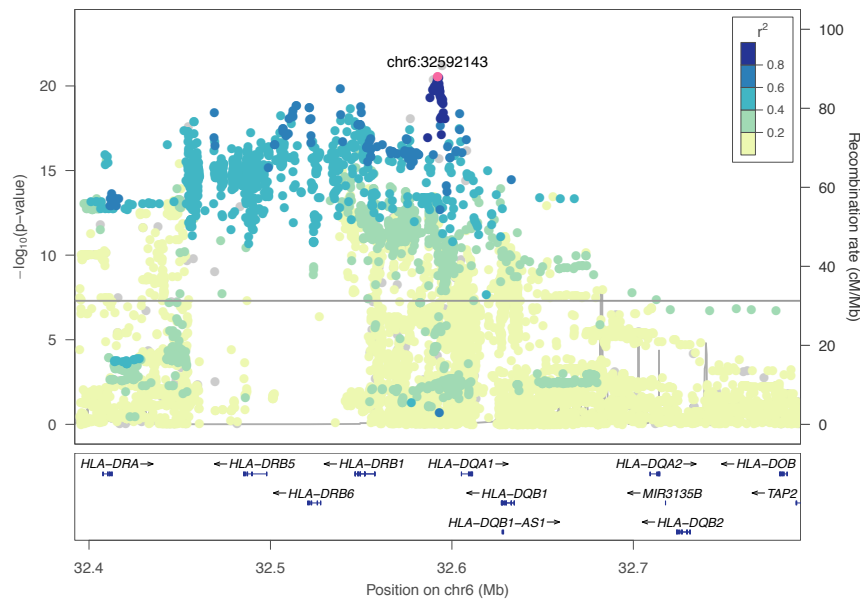


Regional association plot for variant rs9271673 in the analysis of **nADA titers** in the pooled **discovery + replication** GWAS of IFN $\beta$ -1a s.c.-treated patients.

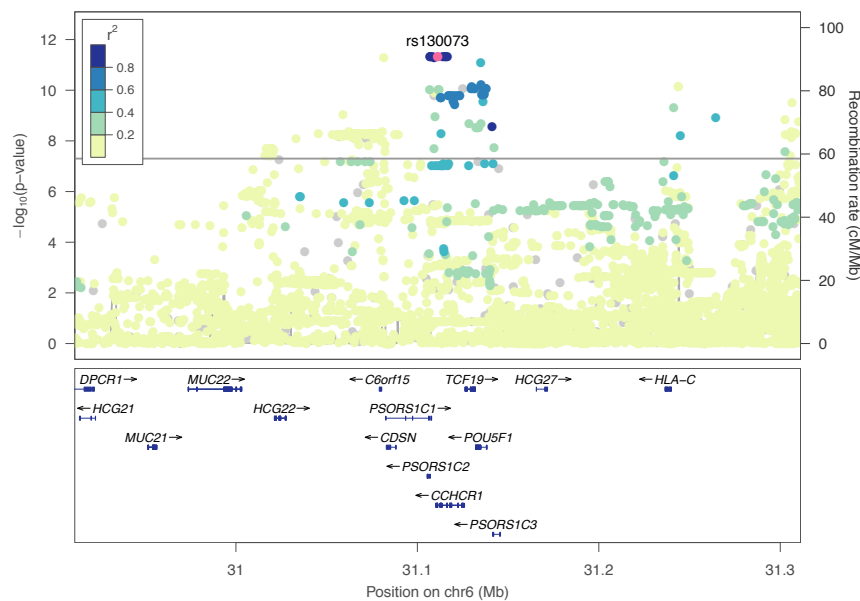


## Genetic risk for anti-drug antibodies against interferon-beta – Regional association plots

Regional association plot for variant rs9281962 in the analysis of **bADA levels** in the **discovery-stage** GWAS of IFN $\beta$ -1a s.c.-treated patients. LD information is shown for variant chr6:32592143 instead of rs9281962.



Regional association plot for variant rs130073 in the analysis of **bADA levels** in the **discovery-stage** GWAS of IFN $\beta$ -1a s.c.-treated patients.



## Genetic risk for anti-drug antibodies against interferon-beta – Regional association plots

Regional association plot for variant rs9281962 in the analysis of **bADA levels** in the pooled **discovery + replication** GWAS of IFN $\beta$ -1a s.c.-treated patients. LD information is shown for variant chr6:32592143 instead of rs9281962.

