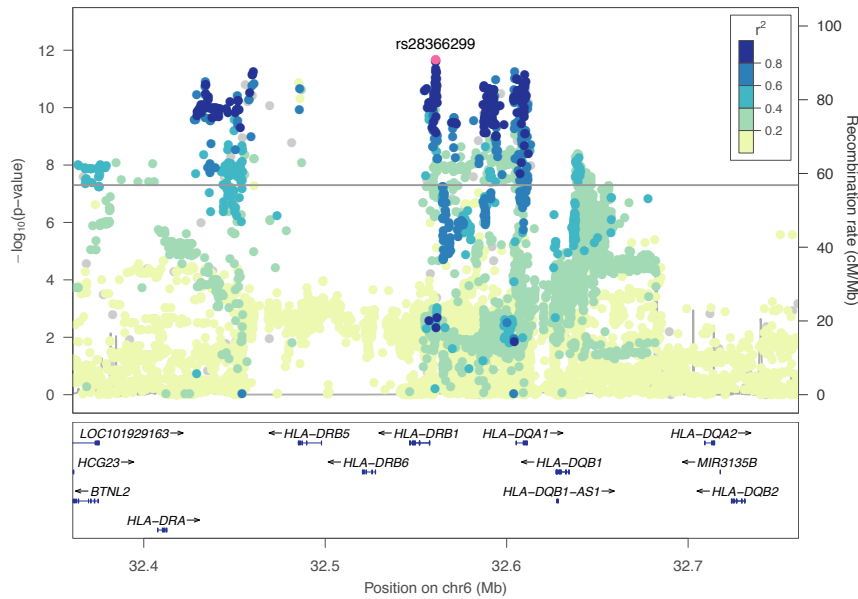


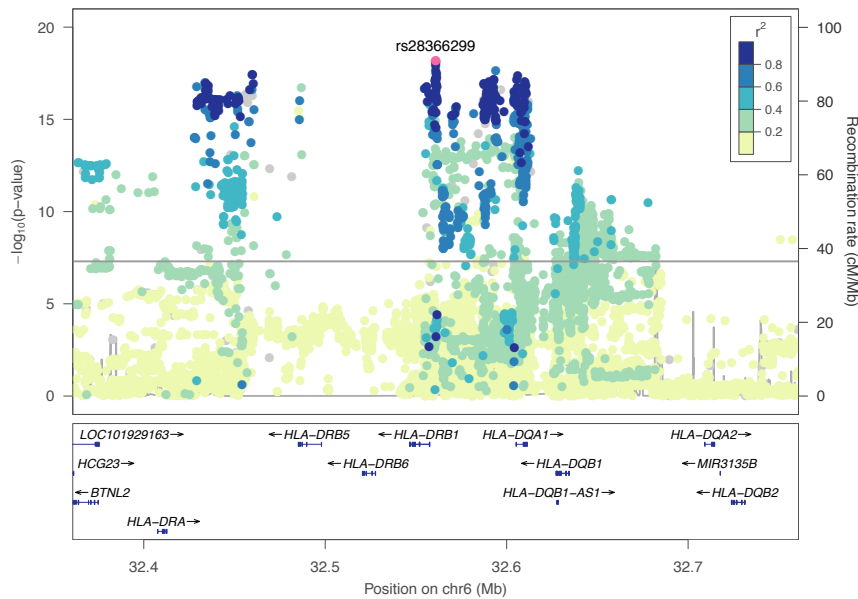
**Regional association plots of replicated and top pooled GWAS variants in the analysis of IFN $\beta$ -1b s.c.-treated patients.**

Regional association plots of variants from the GWAS generated using LocusZoom v1.4 and the 1000 Genomes 1000G\_Nov2014 EUR reference panel. The color of dots indicates LD with the lead variant (pink). Gray dots represent signals with missing LD  $r^2$  values. If no LD information was present in the database on the top variant, LD with the variant showing the second-lowest  $p$ -value is indicated. The grey line indicates genome-wide significance. cM: centimorgan, chr: chromosome, Mb: mega base pairs.

Regional association plot for variant rs28366299 in the analysis of **nADA presence** in the **discovery-stage** GWAS of IFN $\beta$ -1b s.c.-treated patients.

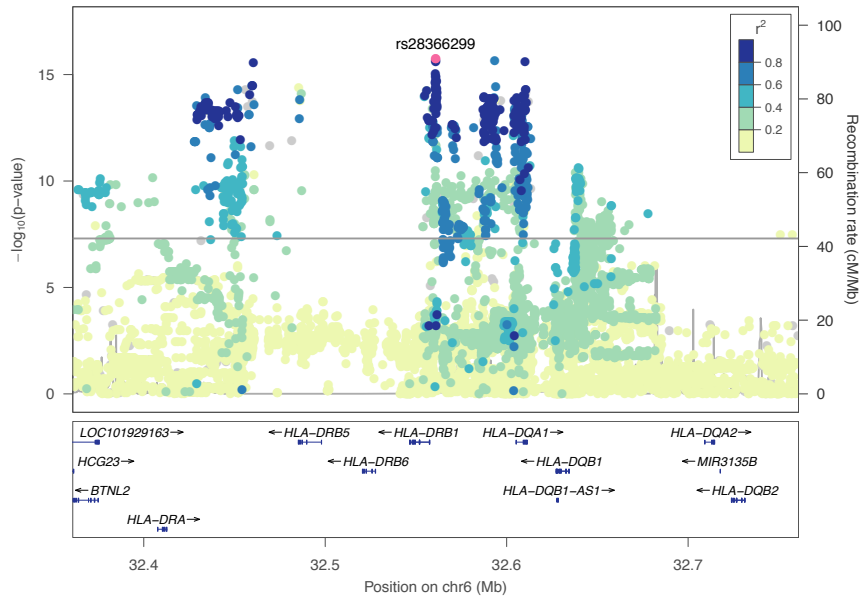


Regional association plot for variant rs28366299 in the analysis of **nADA presence** in the pooled **discovery + replication** GWAS of IFN $\beta$ -1b s.c.-treated patients.

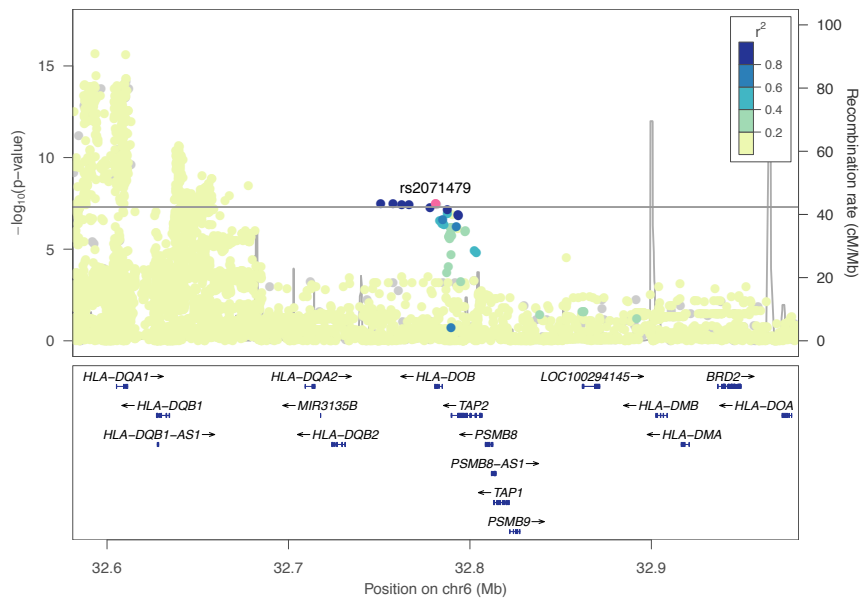


## Genetic risk for anti-drug antibodies against interferon-beta – Regional association plots

Regional association plot for variant rs28366299 in the analysis of **nADA titers** in the **discovery-stage** GWAS of IFN $\beta$ -1b s.c.-treated patients.

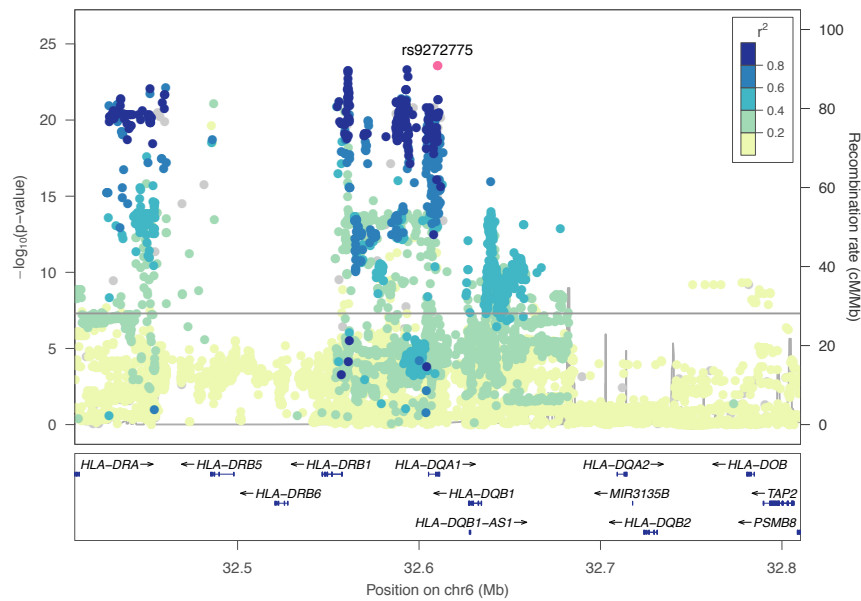


Regional association plot for variant rs2071479 in the analysis of **nADA titers** in the **discovery-stage** GWAS of IFN $\beta$ -1b s.c.-treated patients.

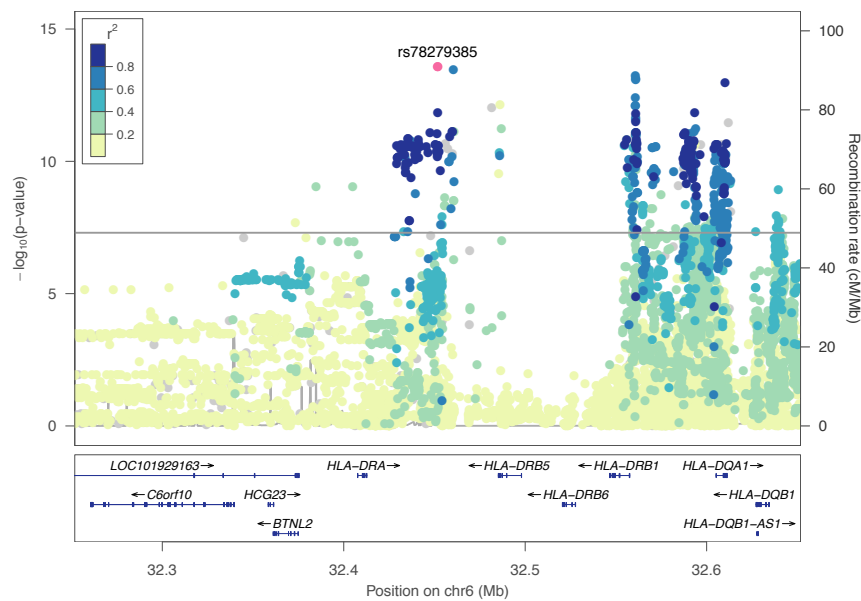


## Genetic risk for anti-drug antibodies against interferon-beta – Regional association plots

Regional association plot for variant rs9272775 in the analysis of **nADA titers** in the pooled **discovery + replication** GWAS of IFN $\beta$ -1b s.c.-treated patients.

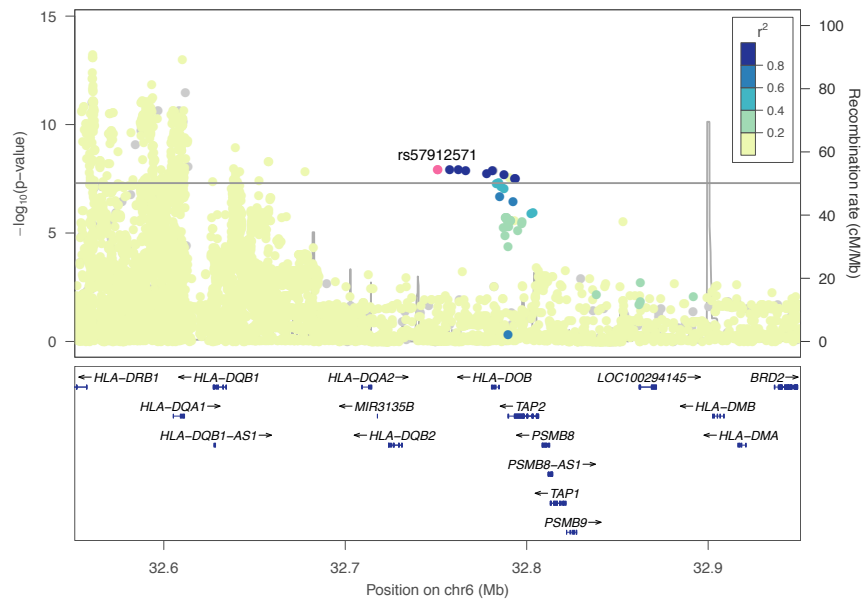


Regional association plot for variant rs78279385 in the analysis of **bADA levels** in the **discovery-stage** GWAS of IFN $\beta$ -1b s.c.-treated patients.

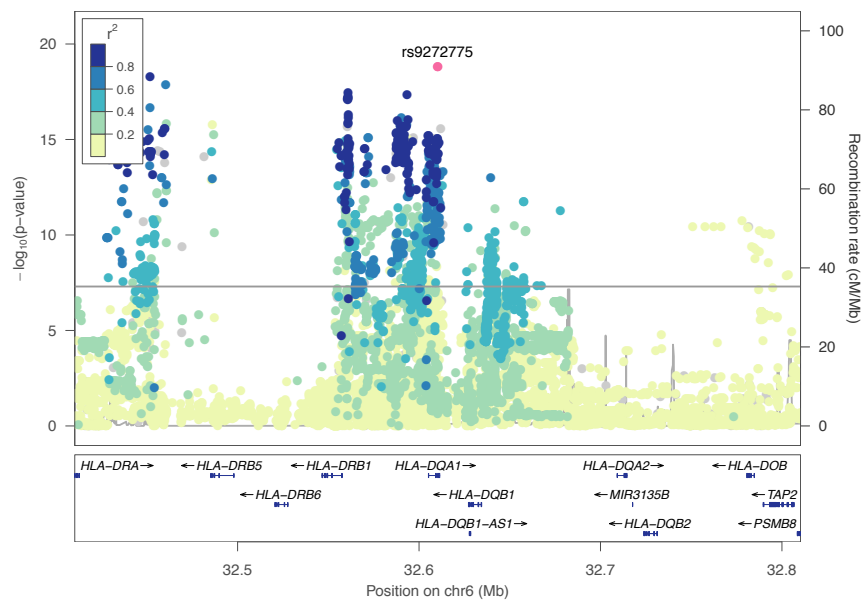


## Genetic risk for anti-drug antibodies against interferon-beta – Regional association plots

Regional association plot for variant rs57912571 in the analysis of **bADA** levels in the **discovery-stage** GWAS of IFN $\beta$ -1b s.c.-treated patients.

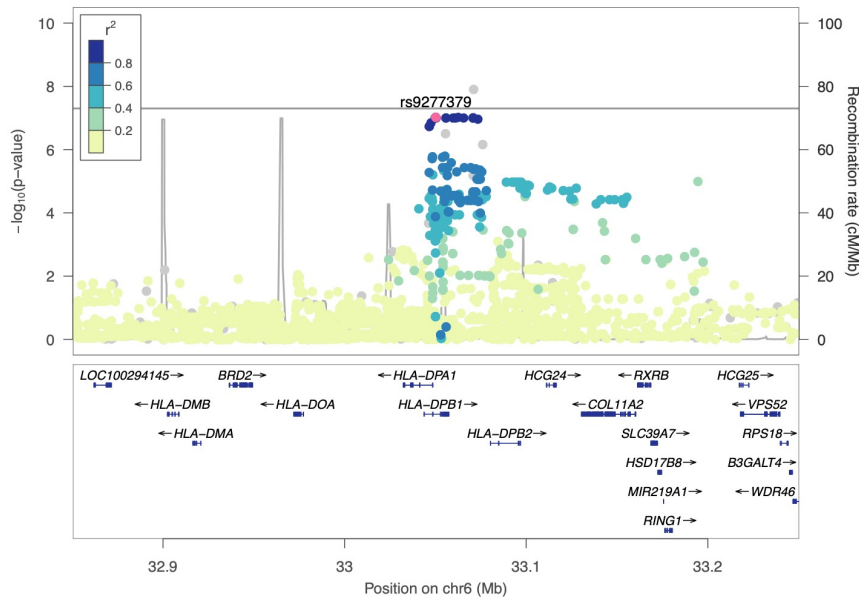


Regional association plot for variant rs9272775 in the analysis of **bADA** levels in the pooled **discovery + replication** GWAS of IFN $\beta$ -1b s.c.-treated patients.

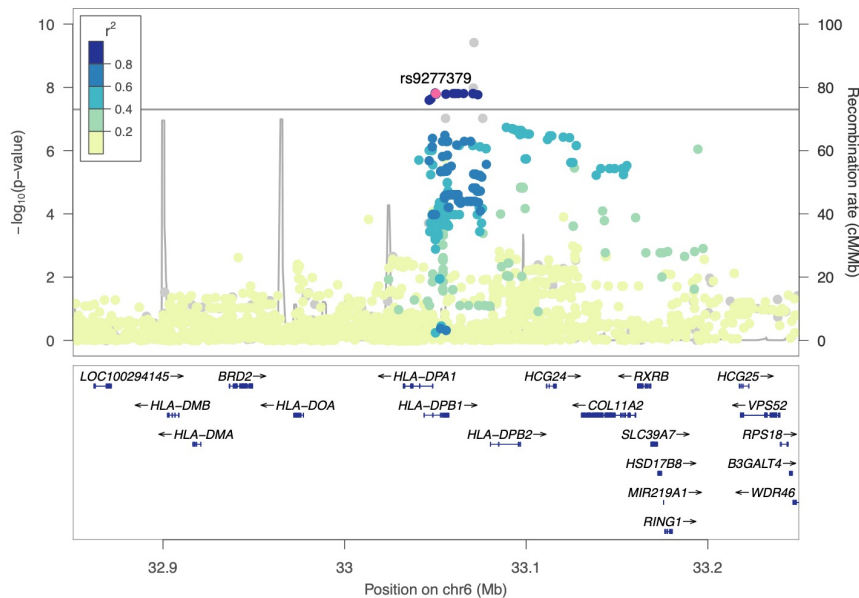


## Genetic risk for anti-drug antibodies against interferon-beta – Regional association plots

Regional association plot for variant rs559242105, conditioned for rs28366299, in the conditional analysis of **nADA presence** in the **discovery + replication** pooled dataset of IFN $\beta$ -1b s.c.-treated patients. LD information is shown for variant rs9277379 instead of rs559242105.



Regional association plot for variant rs559242105, conditioned for rs9272775, in the conditional analysis of **nADA titers** in the **discovery + replication** pooled dataset of IFN $\beta$ -1b s.c.-treated patients. LD information is shown for variant rs9277379 instead of rs559242105.



## Genetic risk for anti-drug antibodies against interferon-beta – Regional association plots

Regional association plot for variant rs17205731, conditioned for *HLA-DRB1\*04:01*, in the conditional analysis of **bADA levels** in the **discovery + replication** pooled dataset of IFN $\beta$ -1b s.c.-treated patients.

