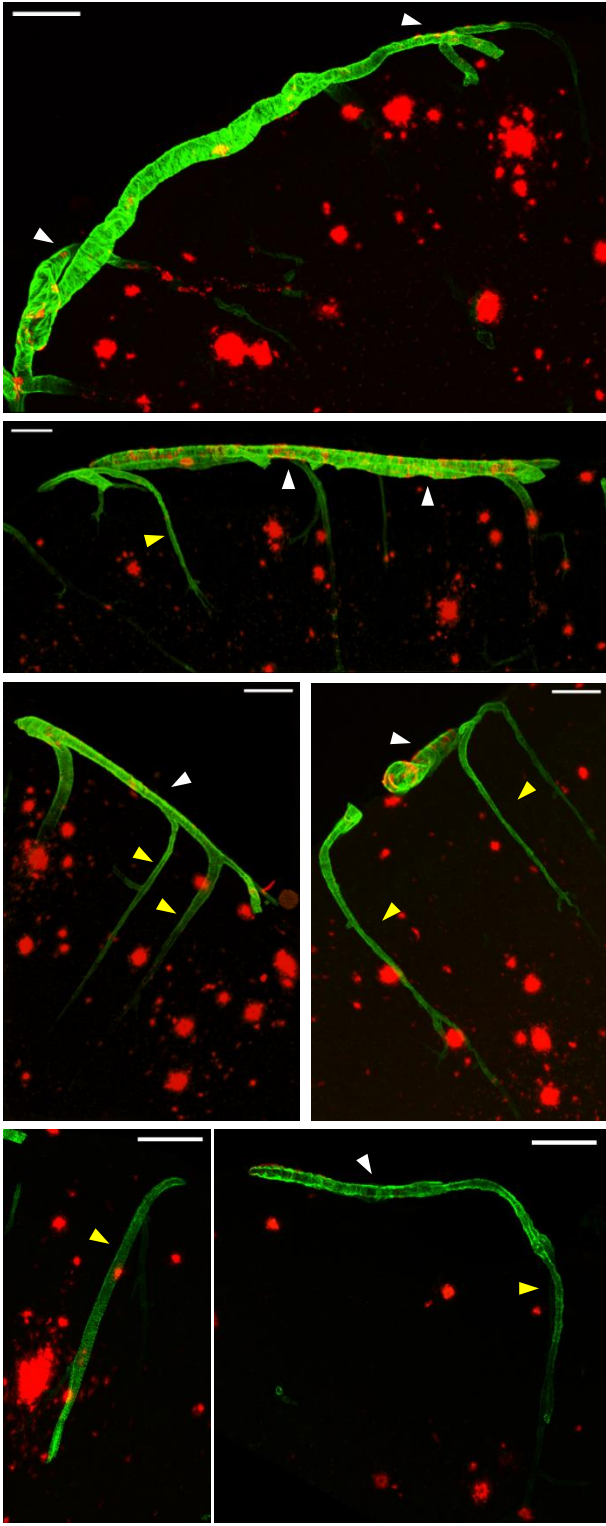
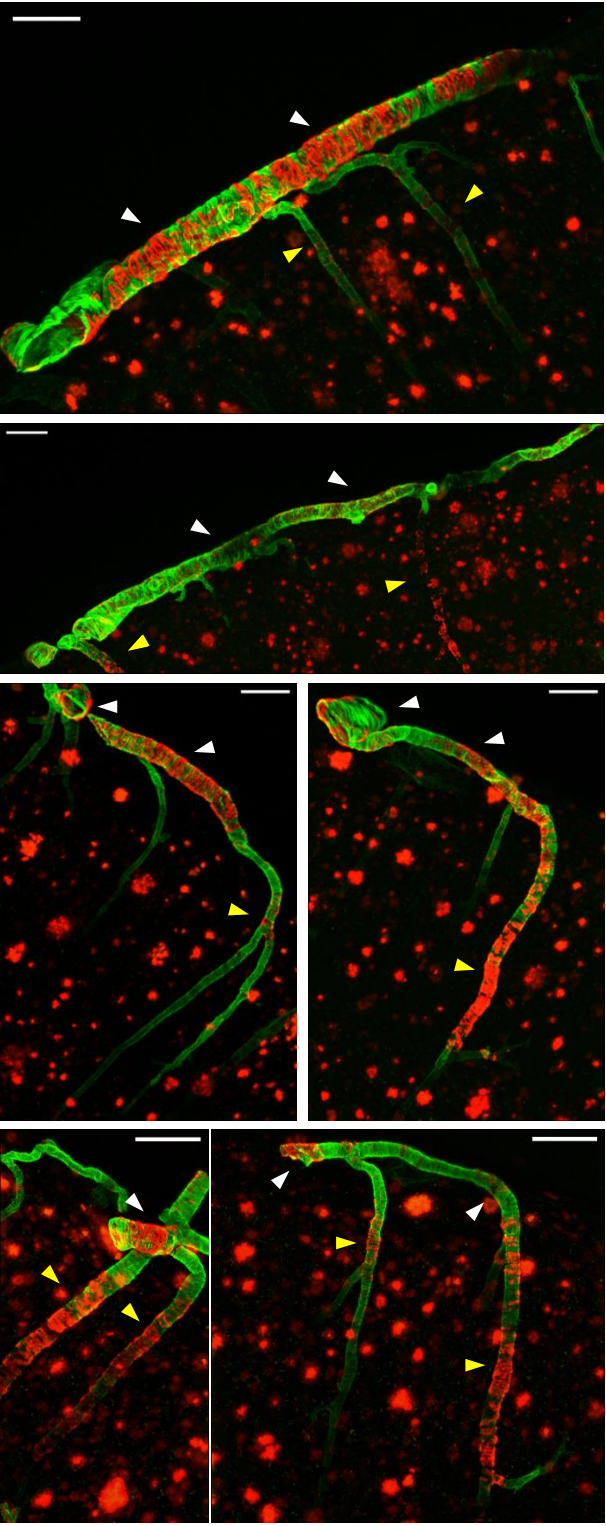


**a** 7-9 m (Mid) Tg



**b** 19-21 m (Old) Tg



MX4 SMA

## **Additional file 2. Amyloid accumulation occurs earlier and more in the surface arteries**

**a-b.** Representative images of CAA across the arterial vascular tree in mid and old Tg mice. SMA was used to identify arteries. Amyloid plaques (MX04) mainly accumulated in the surface artery (white arrowhead) of mid Tg (**a**). In old Tg, CAA was clearly observed in both the surface (white arrowhead) and penetrating artery (yellow arrowhead) (**b**). Among the penetrating arteries, large diameter vessels tend to accumulate more A $\beta$  plaque. Within the same penetrating arteries, A $\beta$  tends to accumulate more in a segment located deeper than the surface (**b**). Scale bar = 100 $\mu$ m.