

Supplementary Information

Influence of Gamma-glutamyltransferase on Idiopathic Pulmonary Arterial Hypertension in Male Patients

Gang-Hua Lu^{1†}, Su-Gang Gong^{2†}, Chao Li¹, Qin-Hua Zhao², Rong Jiang², Ci-Jun
Luo², Lan Wang^{1,2,*}, Rui Zhang^{1,2,*}

¹Tongji University School of Medicine, Shanghai, 200092, China;

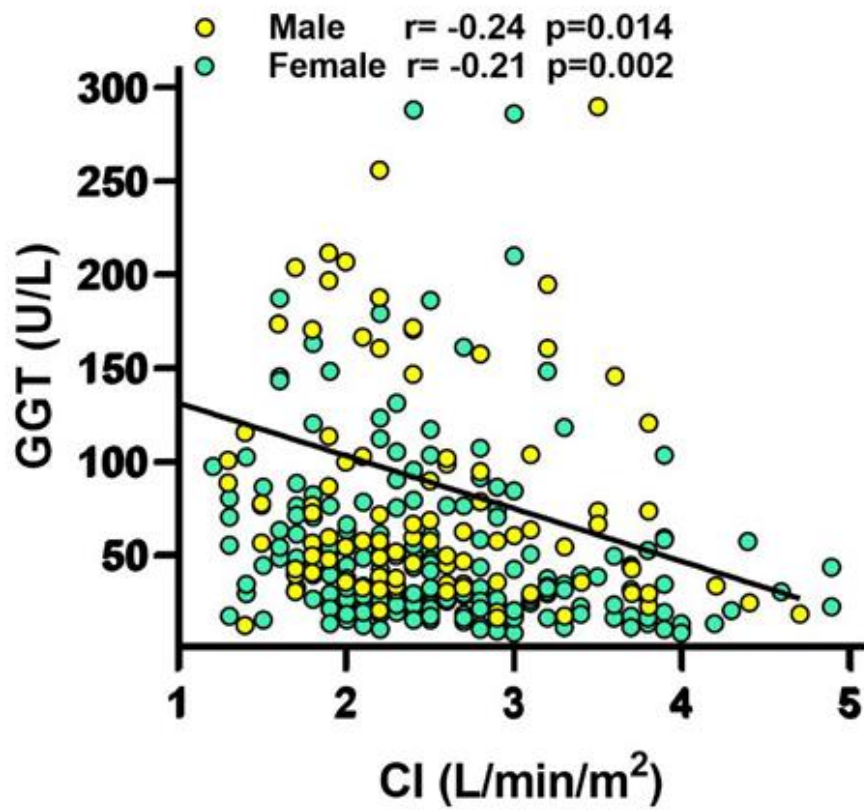
²Department of Cardio-Pulmonary Circulation, Shanghai Pulmonary Hospital,
Tongji University School of Medicine, Shanghai, 200433, China;

***Co-correspondence:**

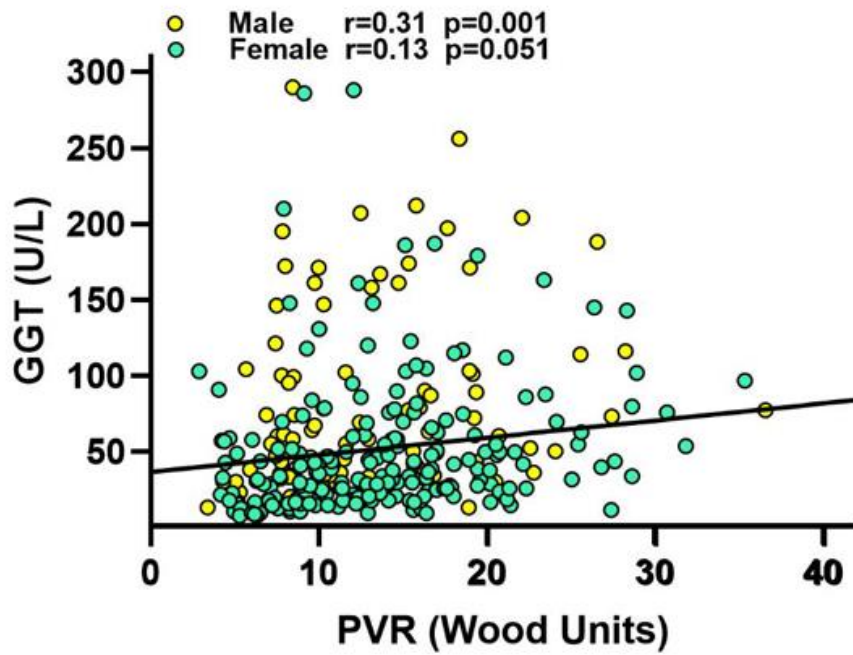
Dr. Rui Zhang, MD, E-mail: zgr1219@163.com;

and Dr. Lan Wang, MD, E-mail: wanglan198212@163.com;

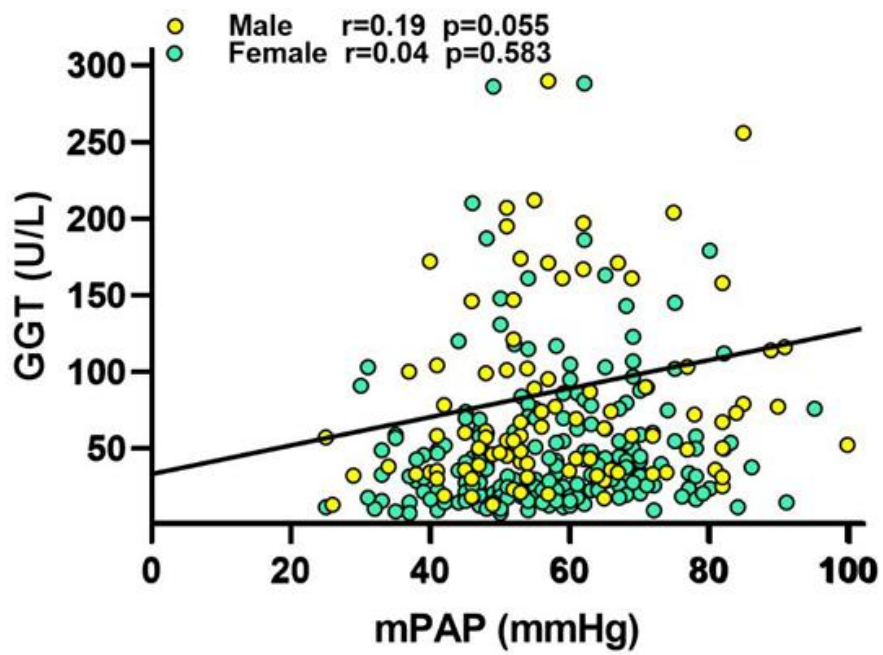
Department of Cardio-Pulmonary Circulation, Shanghai Pulmonary Hospital,
Tongji University School of Medicine, No. 507 Zhengmin Road, Shanghai, 200433,
China; Telephone: +86-21-65115006; Fax: +86-21-55662767;



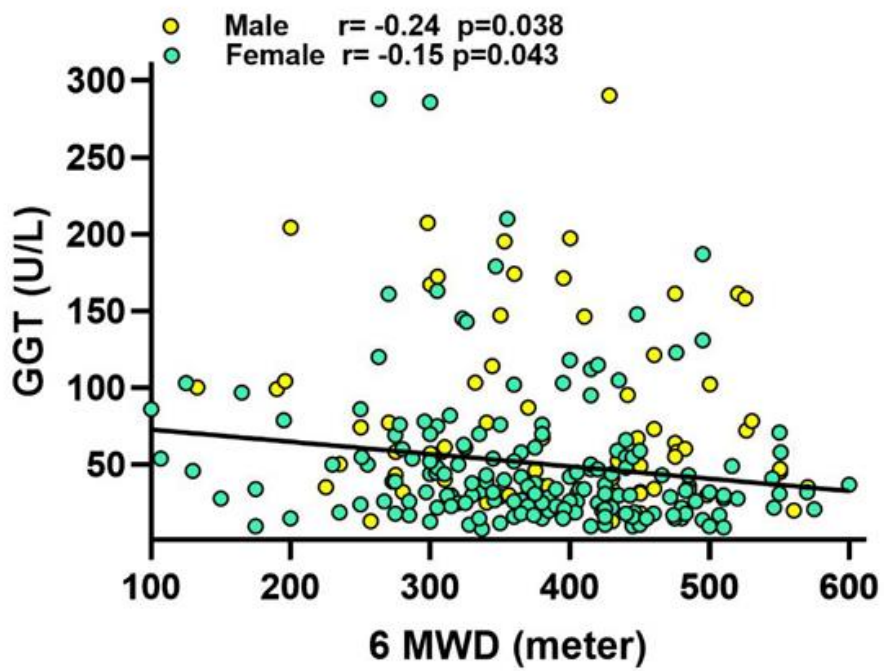
Supplemental Figure 1. Correlation between serum GGT activity and CI ($r = -0.24$, $p = 0.014$ in male; $r = -0.21$, $p = 0.002$ in female).



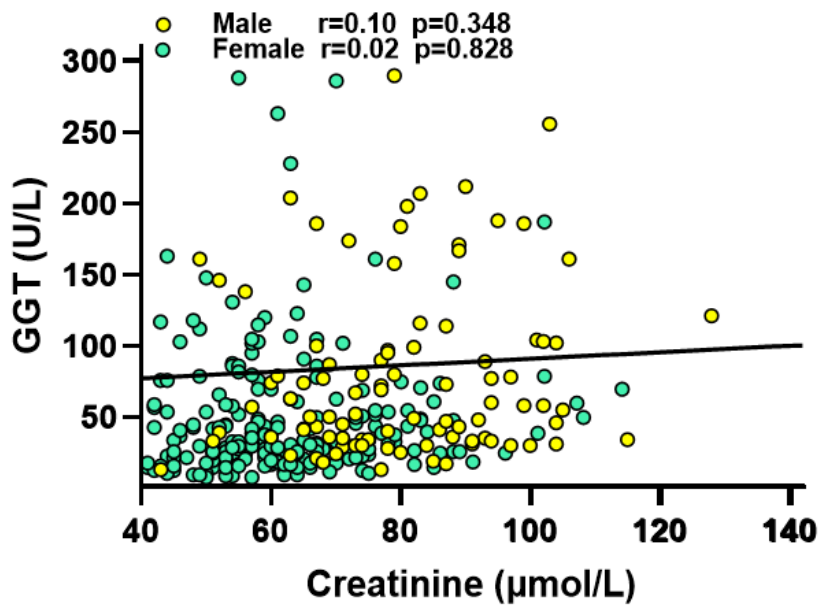
Supplemental Figure 2. Correlation between serum GGT activity and PVR ($r = 0.31$, $p = 0.001$ in male; $r = 0.13$, $p = 0.051$ in female).



Supplemental Figure 3. Correlation between serum GGT activity and mPAP ($r = 0.19$, $p = 0.055$ in male; $r = 0.04$, $p = 0.583$ in female).

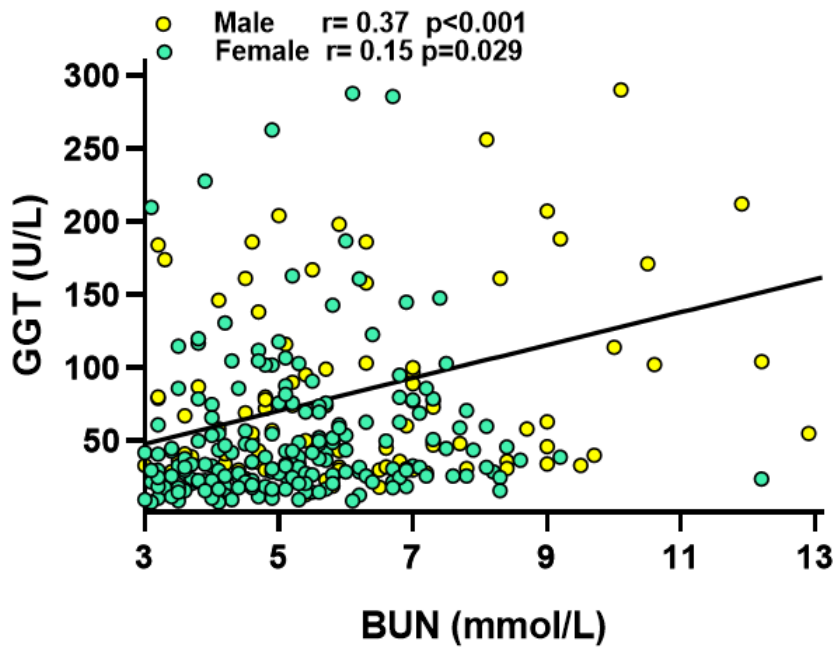


Supplemental Figure 4. Correlation between serum GGT activity and 6MWD ($r = -0.24$, $p = 0.038$ in male; $r = -0.15$, $p = 0.043$ in female).

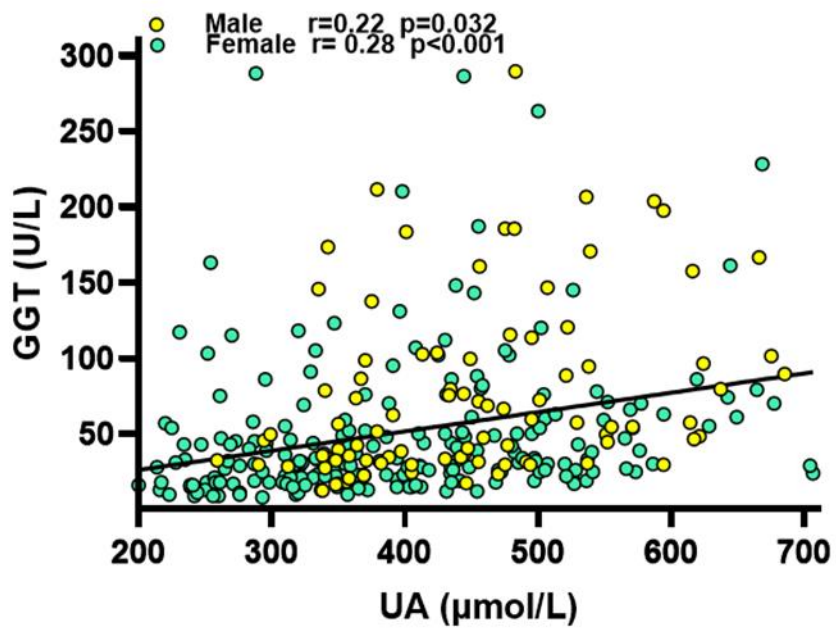


Supplemental Figure 5. Correlation between serum GGT activity and Creatinine

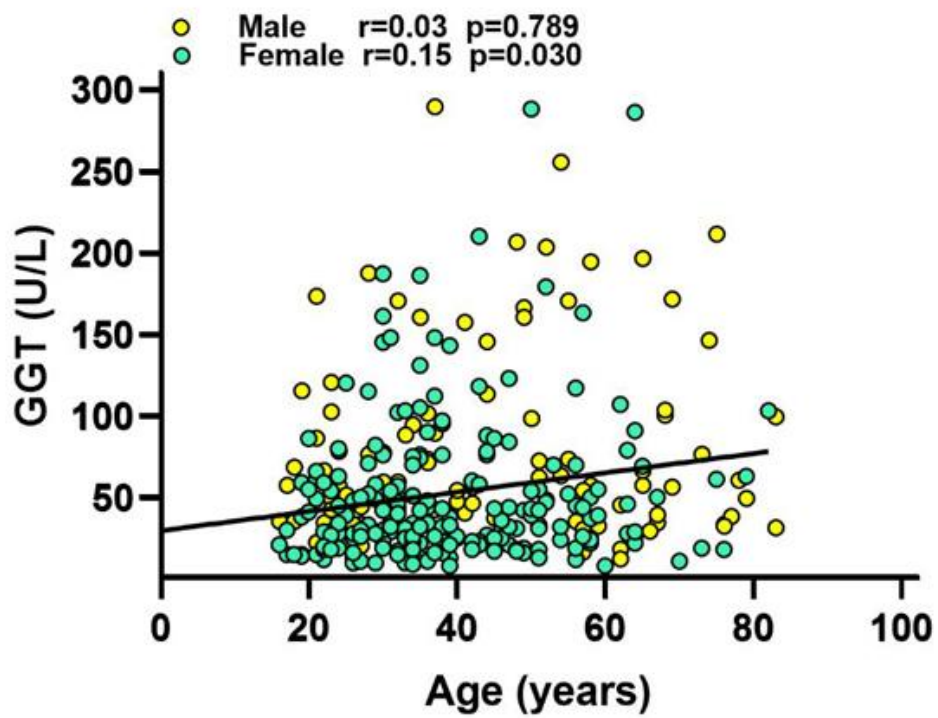
($r = 0.10$, $p = 0.348$ in male; $r = 0.02$, $p = 0.828$ in female).



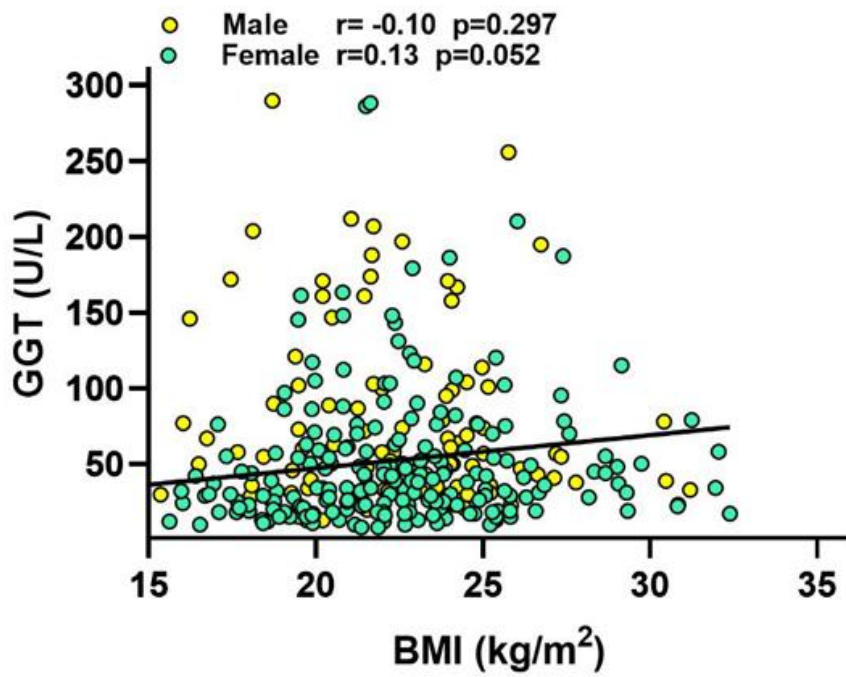
Supplemental Figure 6. Correlation between serum GGT activity and BUN ($r = 0.37$, $p < 0.001$ in male; $r = 0.15$, $p = 0.029$ in female).



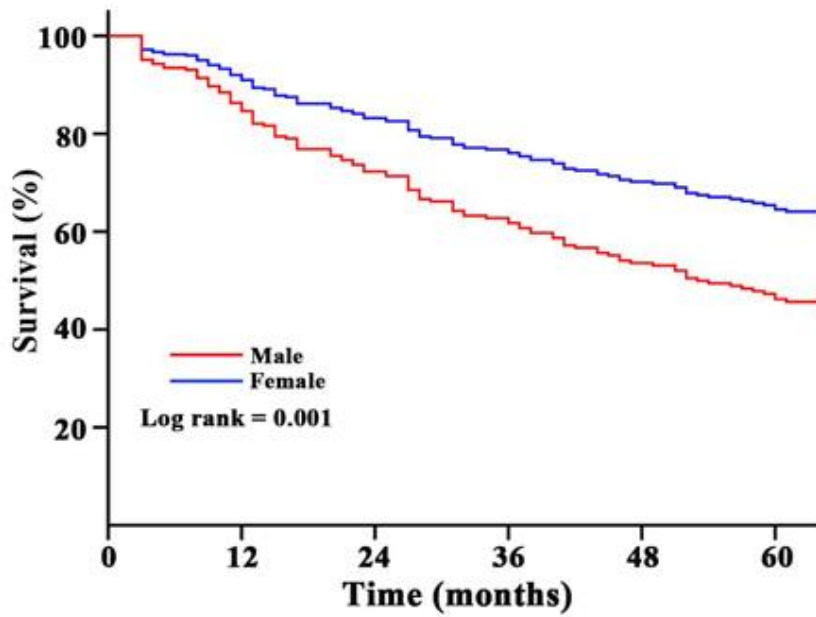
Supplemental Figure 7. Correlation between serum GGT activity and UA ($r = 0.22$, $p = 0.032$ in male; $r = 0.28$, $p < 0.001$ in female).



Supplemental Figure 8. Correlation between serum GGT activity and Age ($r = 0.03$, $p = 0.789$ in male; $r = 0.15$, $p = 0.030$ in female).



Supplemental Figure 9 Correlation between serum GGT activity and BMI ($r = -0.10$, $p = 0.297$ in male; $r = 0.13$, $p = 0.052$ in female).



	Number of IPAH patients at risk (death or transplantation in %)					
Male	105 (0)	83 (17)	65 (27)	48 (36)	40 (43)	32 (48)
Female	233 (0)	190 (8)	159 (16)	131 (21)	117 (25)	95 (29)

Supplemental Figure 10. Kaplan-Meier survival curves according to the different gender.