

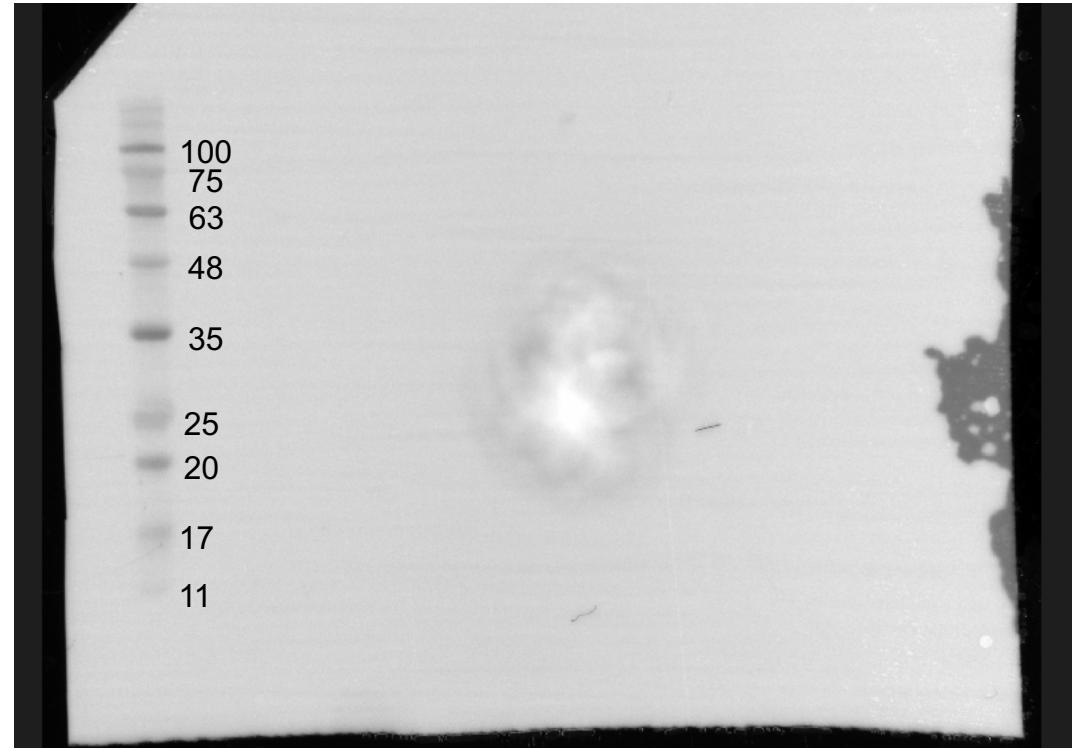
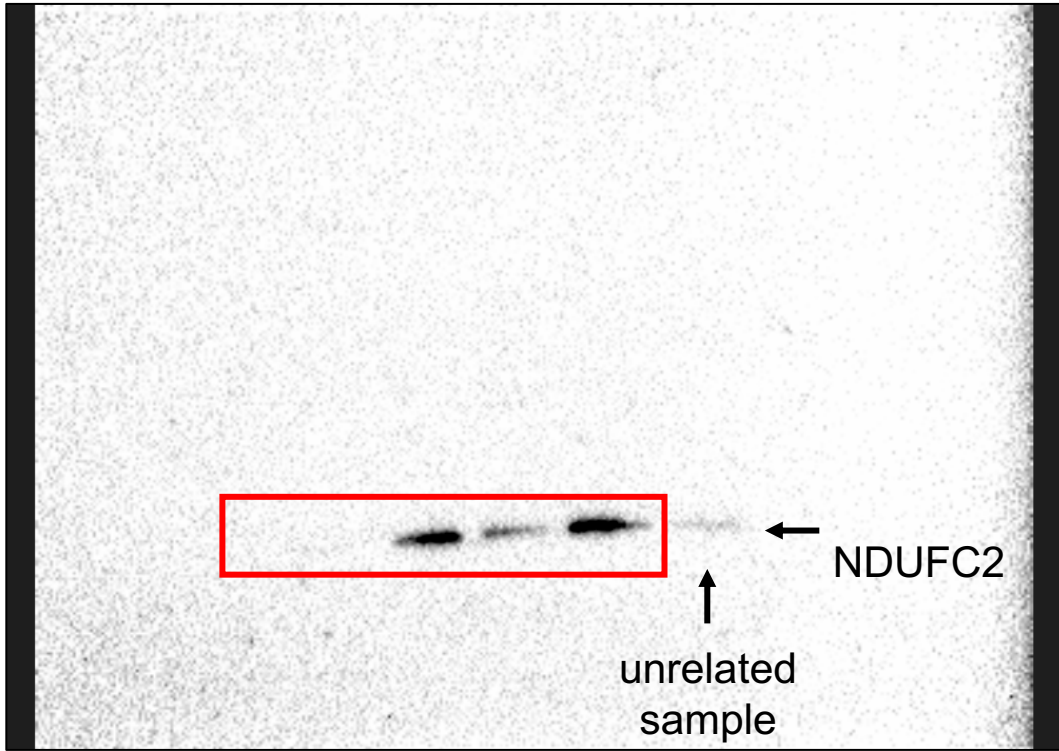
# Figure 3A

## NDUFC2 panel

Chemiluminescent signal used in figure

Colourimetric image to show MW marker (kDa)

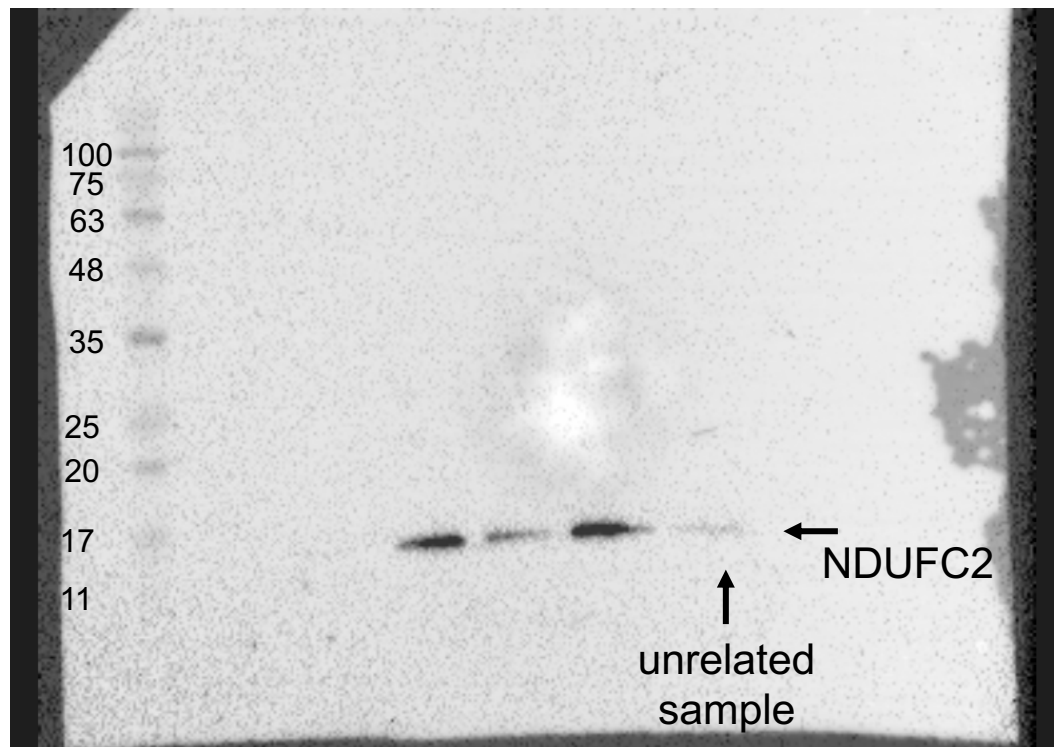
S1 S3 C1 C2 C3



Anti-NDUFC2

Merged image

S1 S3 C1 C2 C3



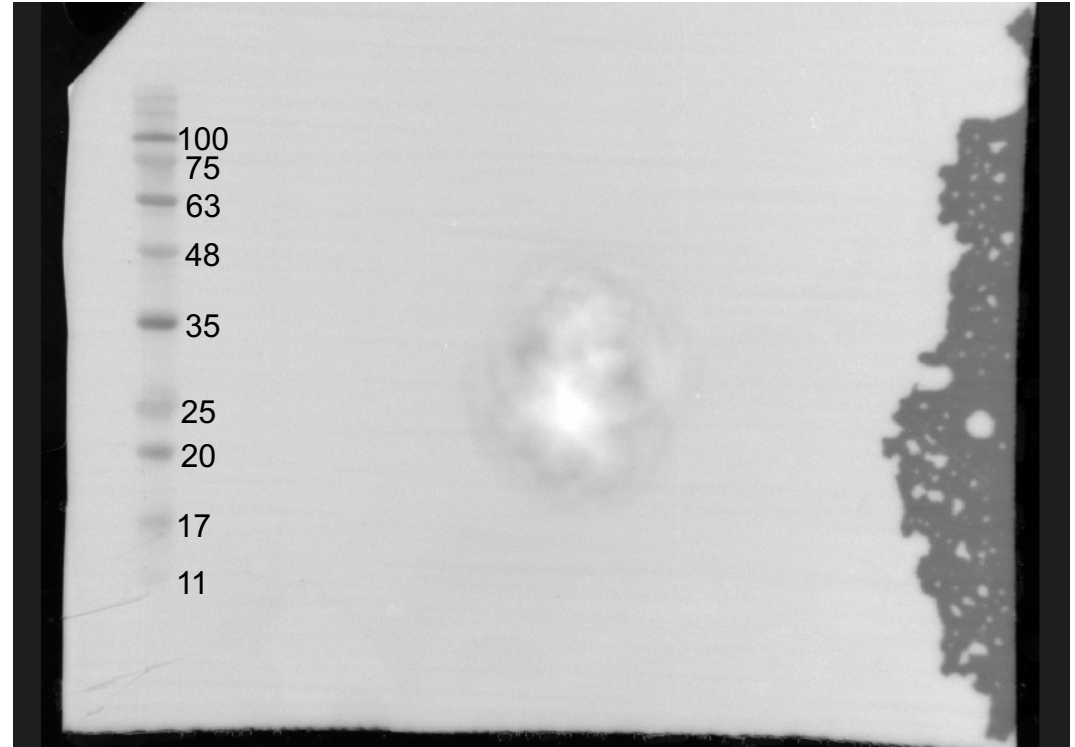
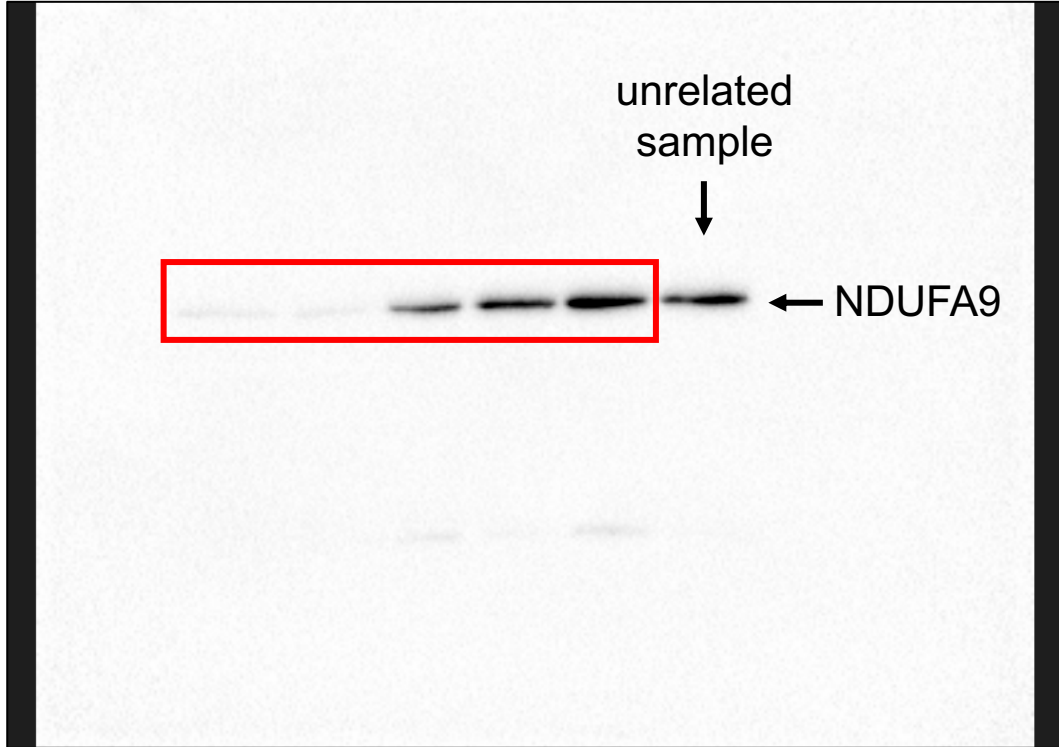
# Figure 3A continued

## NDUFA9 panel

Chemiluminescent signal used in figure

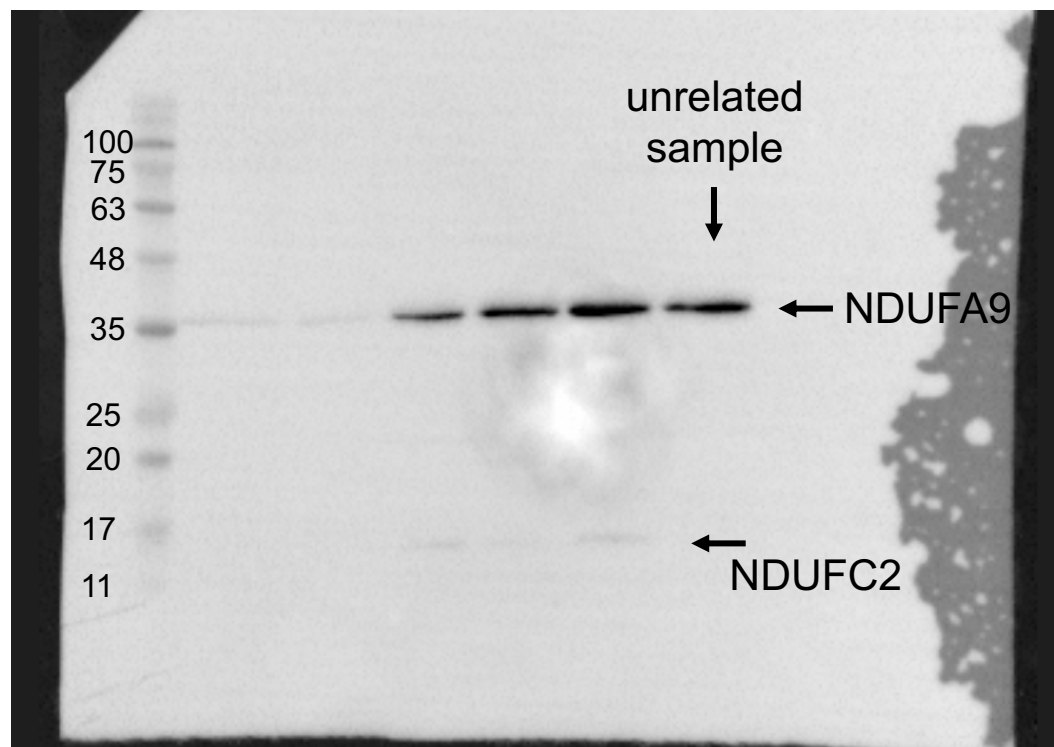
Colourimetric image to show MW marker (kDa)

S1 S3 C1 C2 C3



Merged image

S1 S3 C1 C2 C3



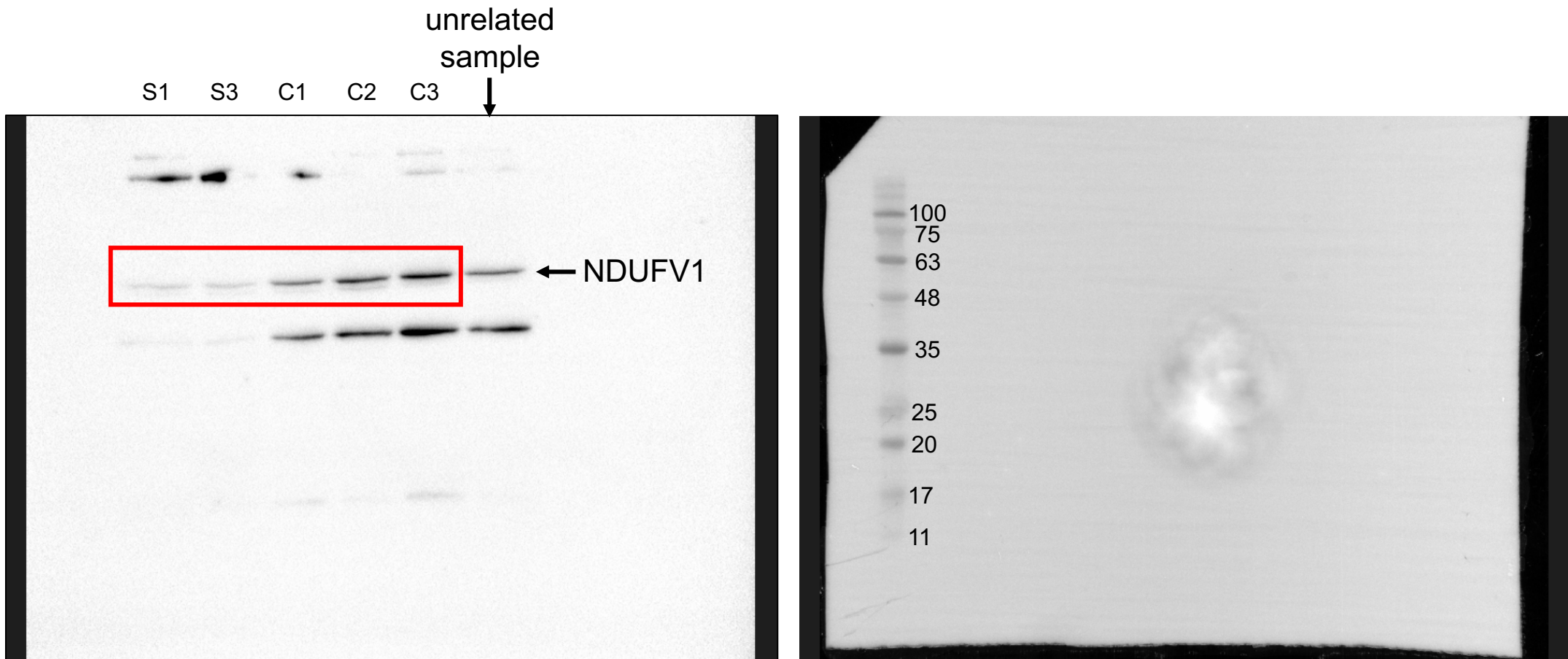


# Figure 3A continued

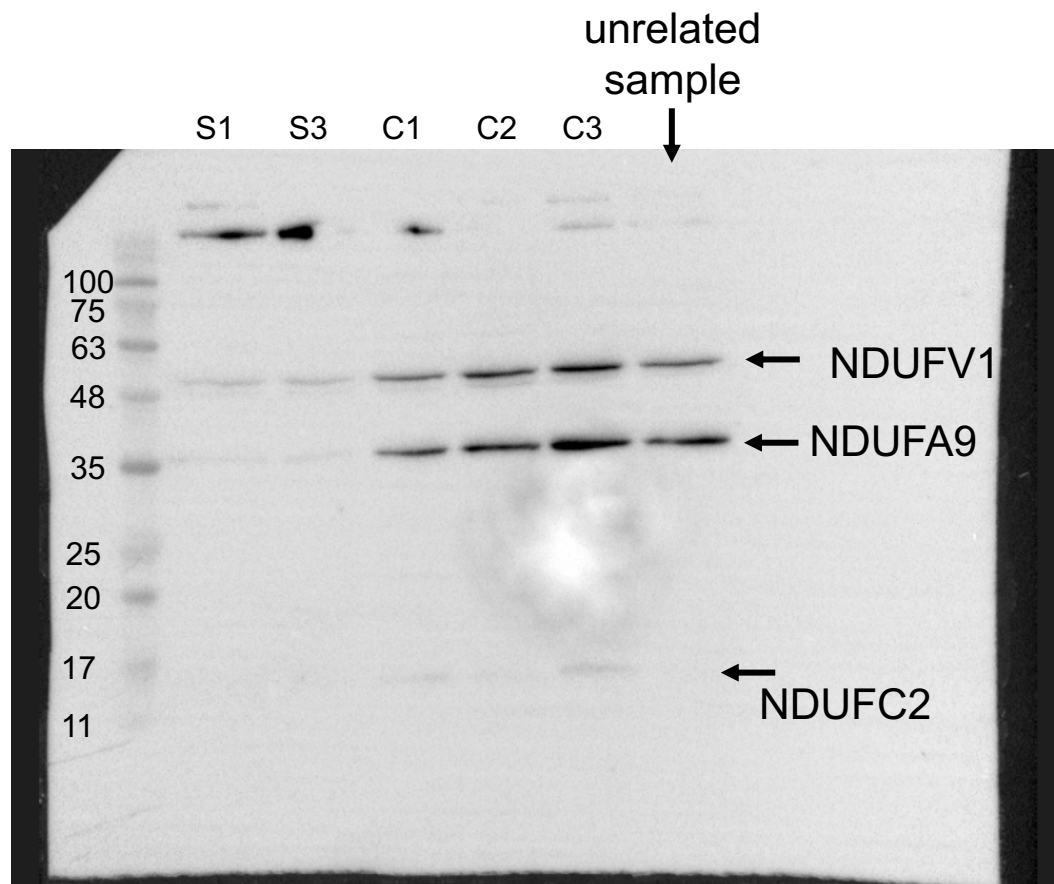
## NDUFV1 panel

Chemiluminescent signal used in figure

Colourimetric image to show MW marker (kDa)



Merged image



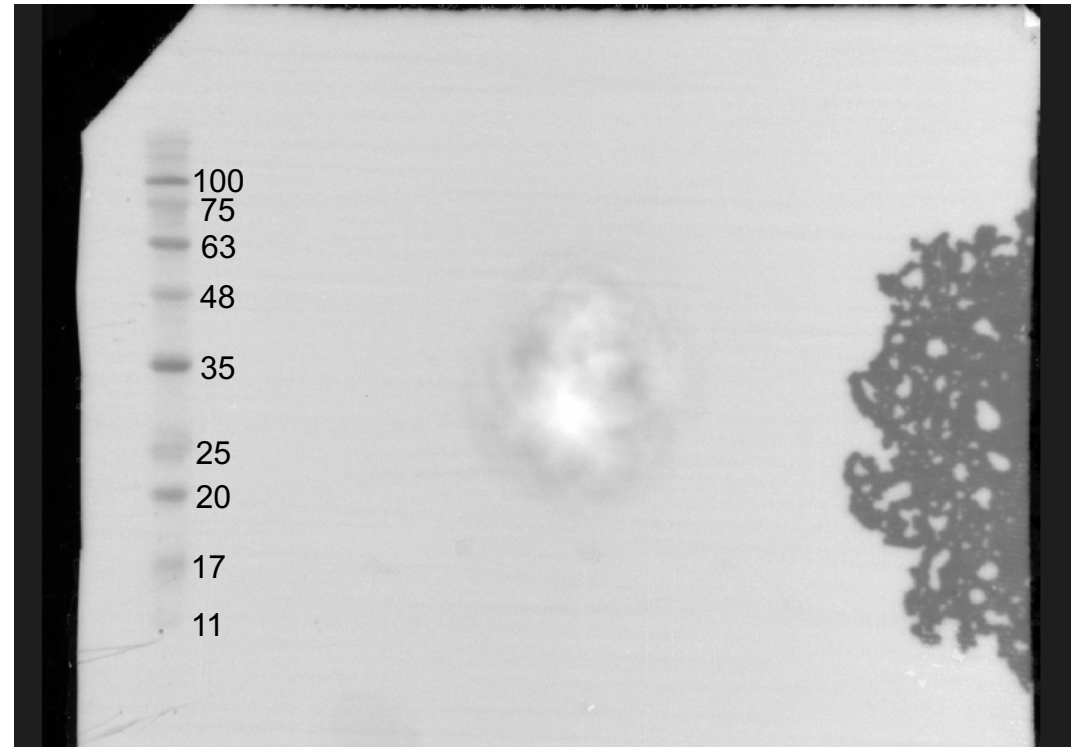
# Figure 3A continued

## SDHA panel

Chemiluminescent signal used in figure

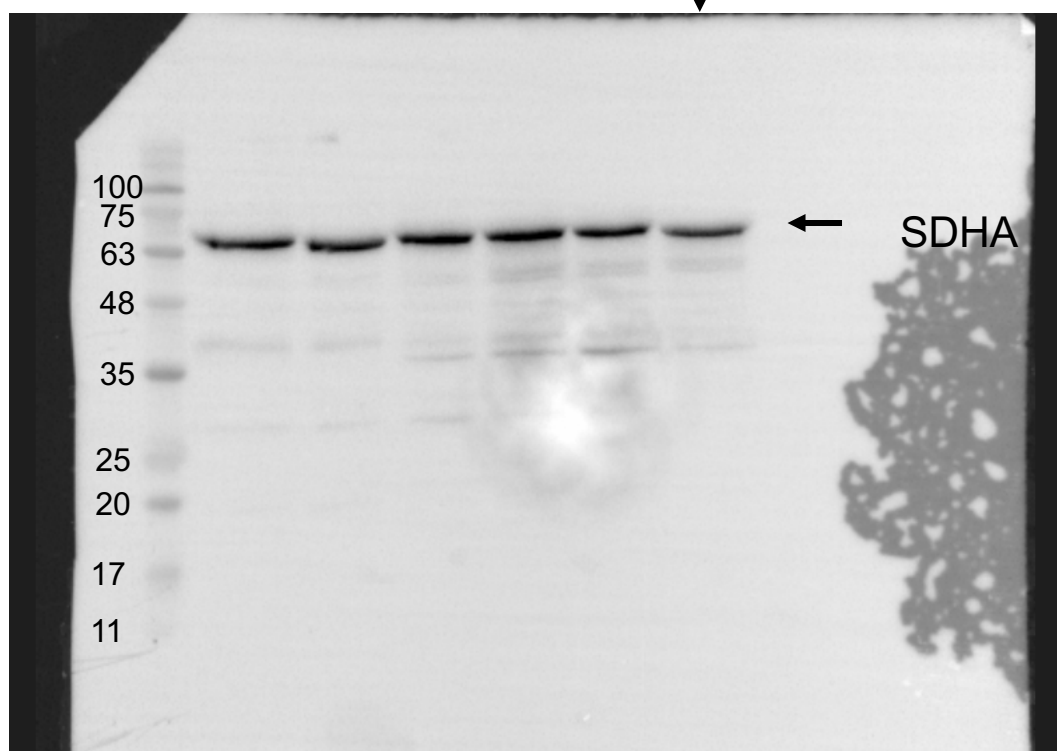
Colourimetric image to show MW marker (kDa)

S1 S3 C1 C2 C3 ↓ unrelated sample



Merged image

S1 S3 C1 C2 C3 ↓ unrelated sample



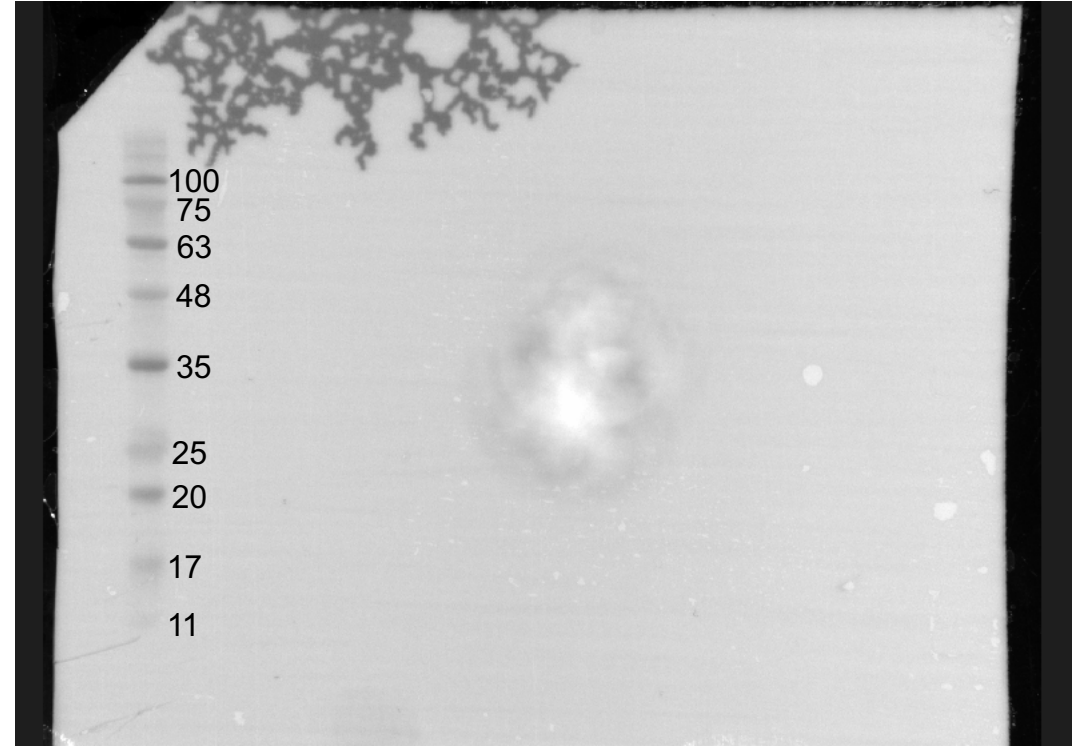
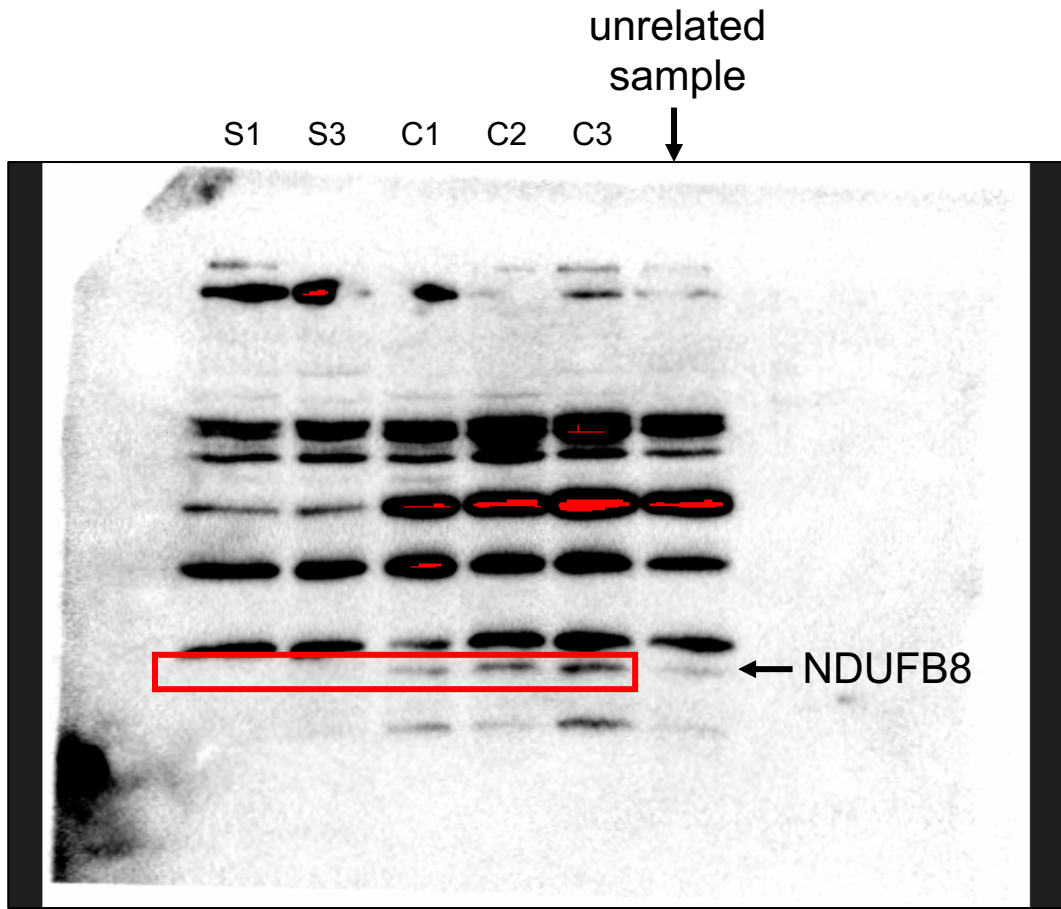


# Figure 3A continued

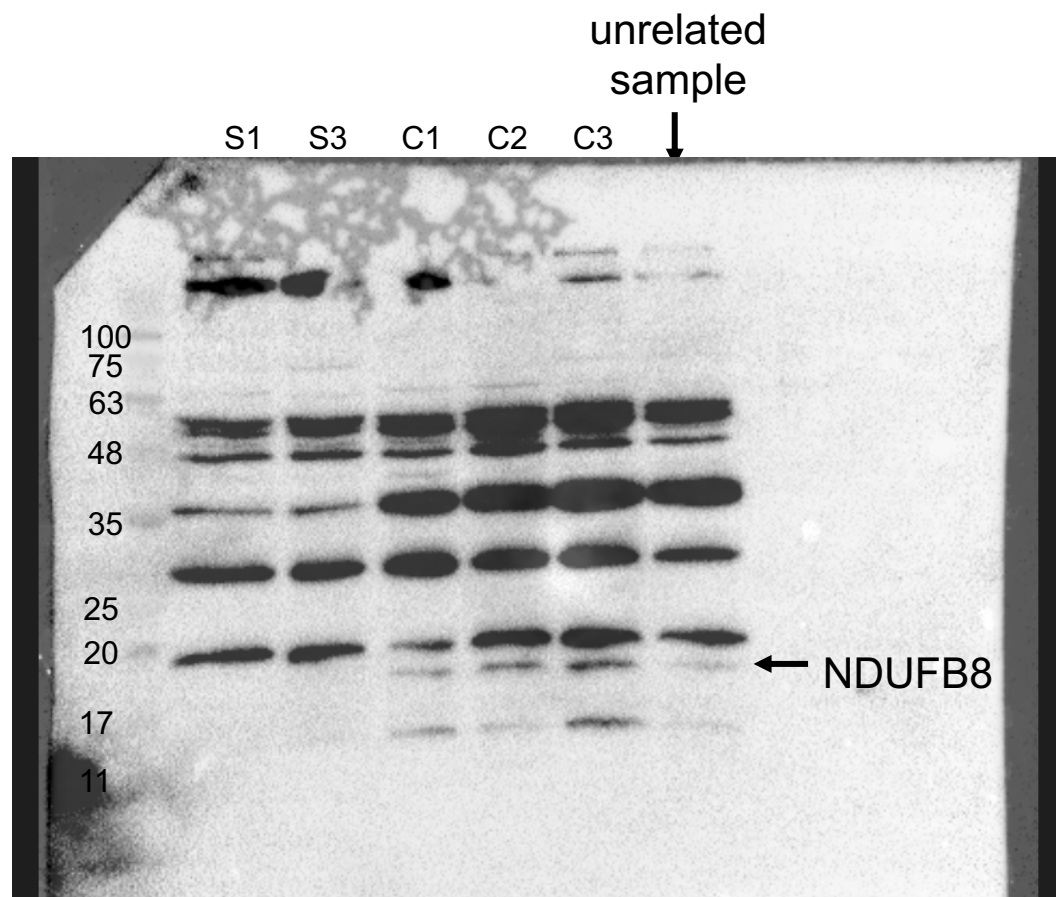
## NDUFB8 panel

Chemiluminescent signal used in figure

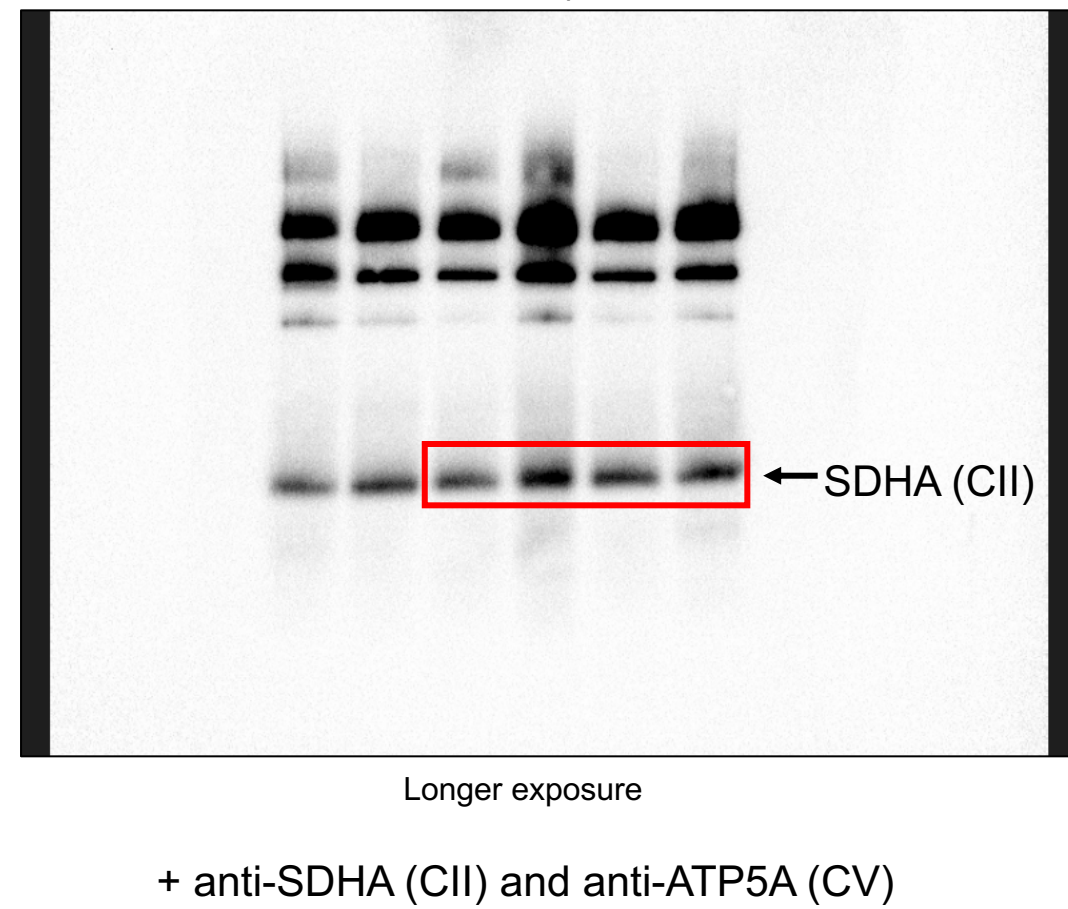
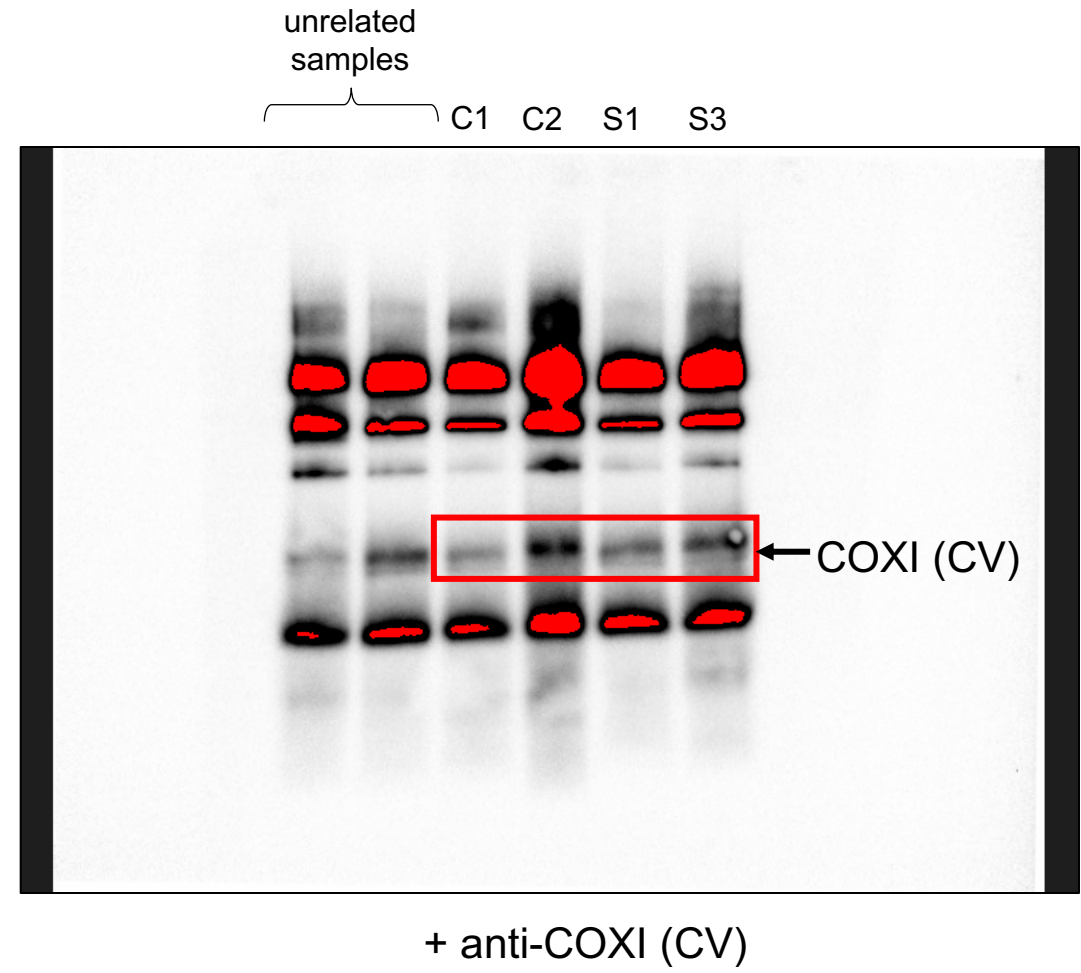
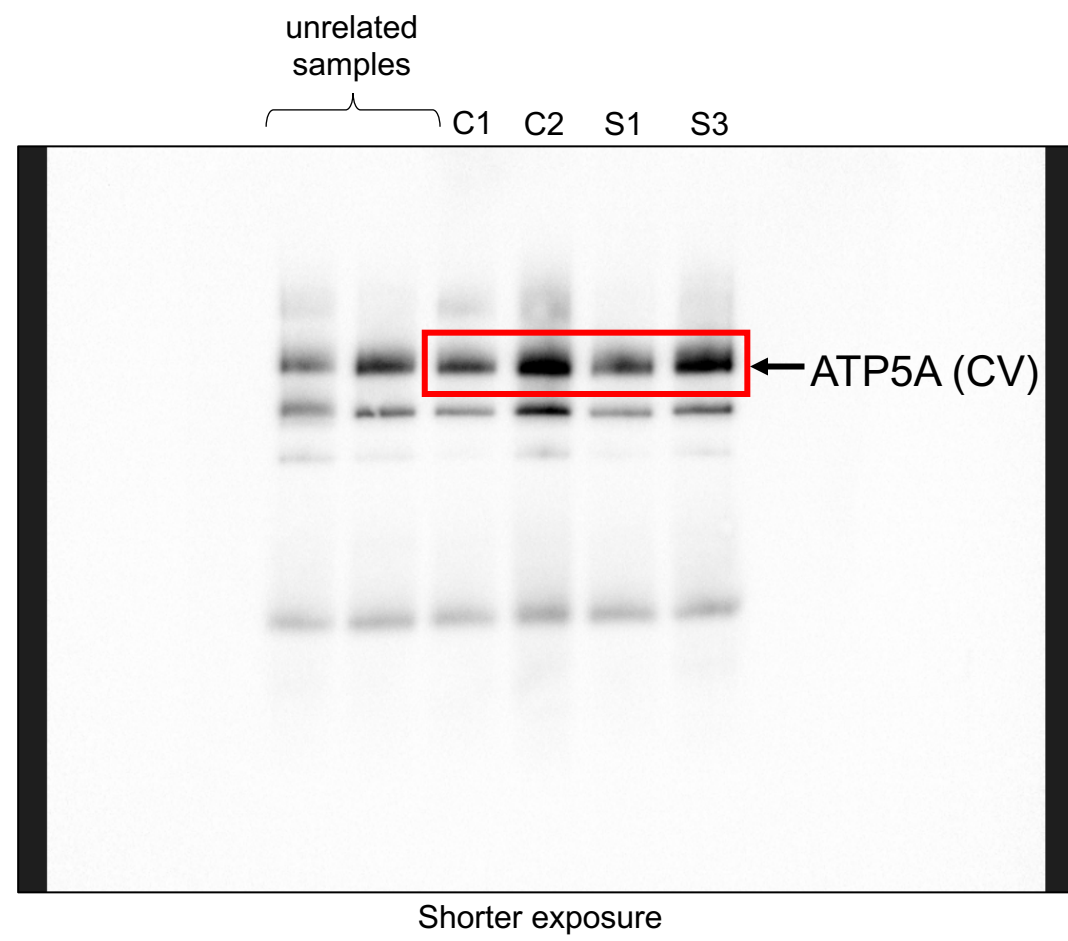
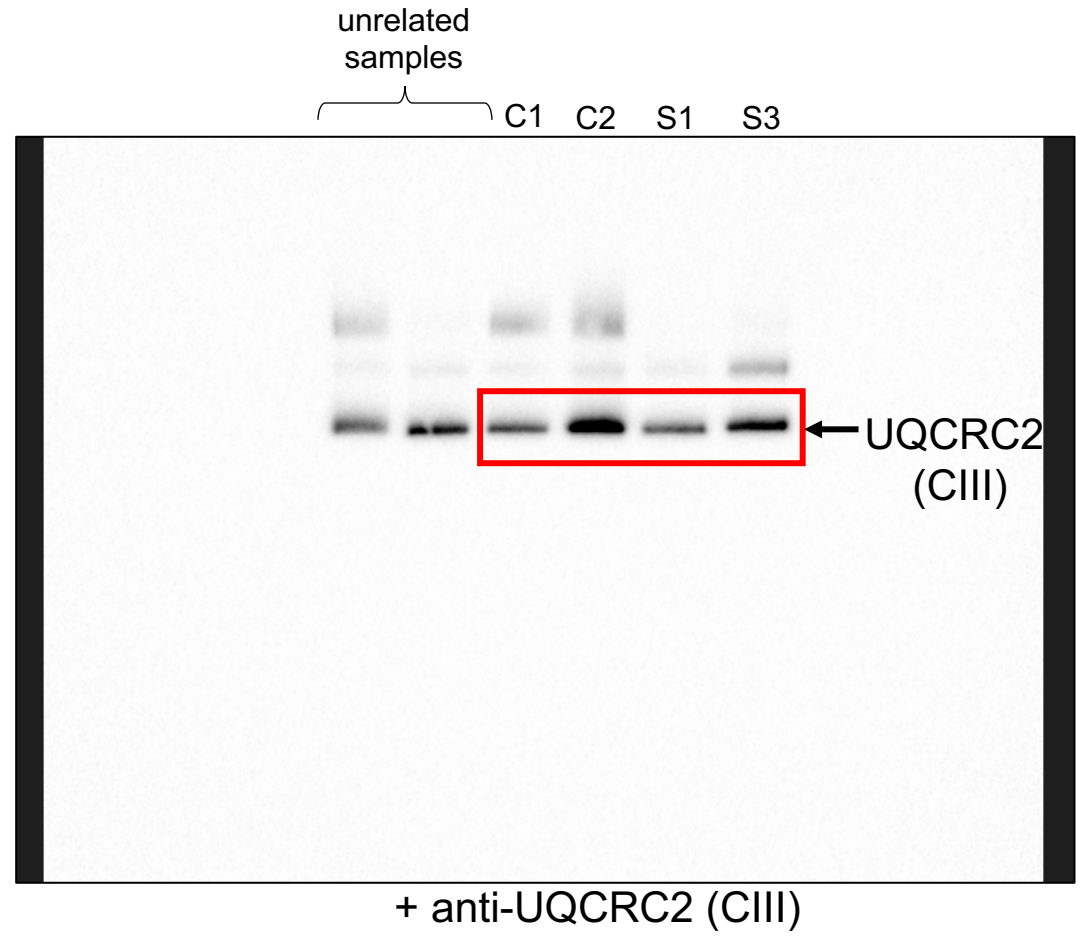
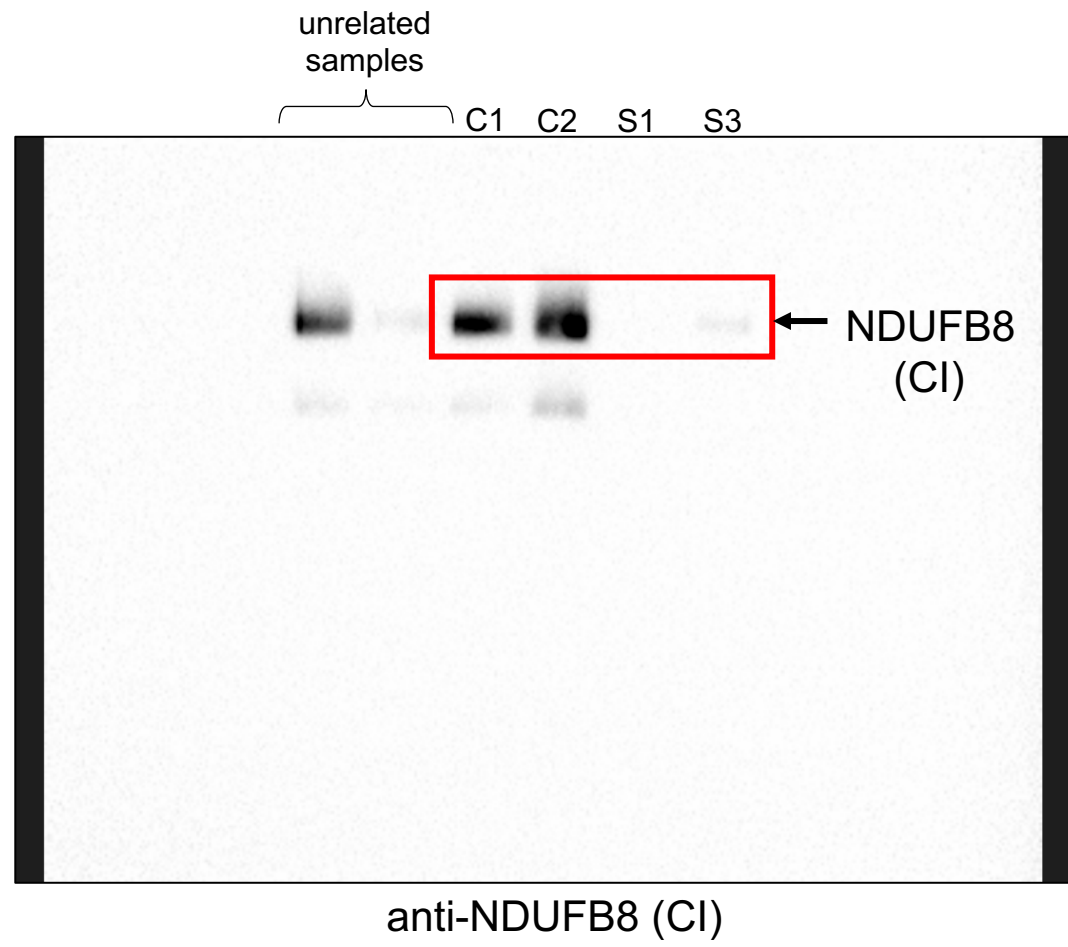
Colourimetric image to show MW marker (kDa)



Merged image



# Figure 3B



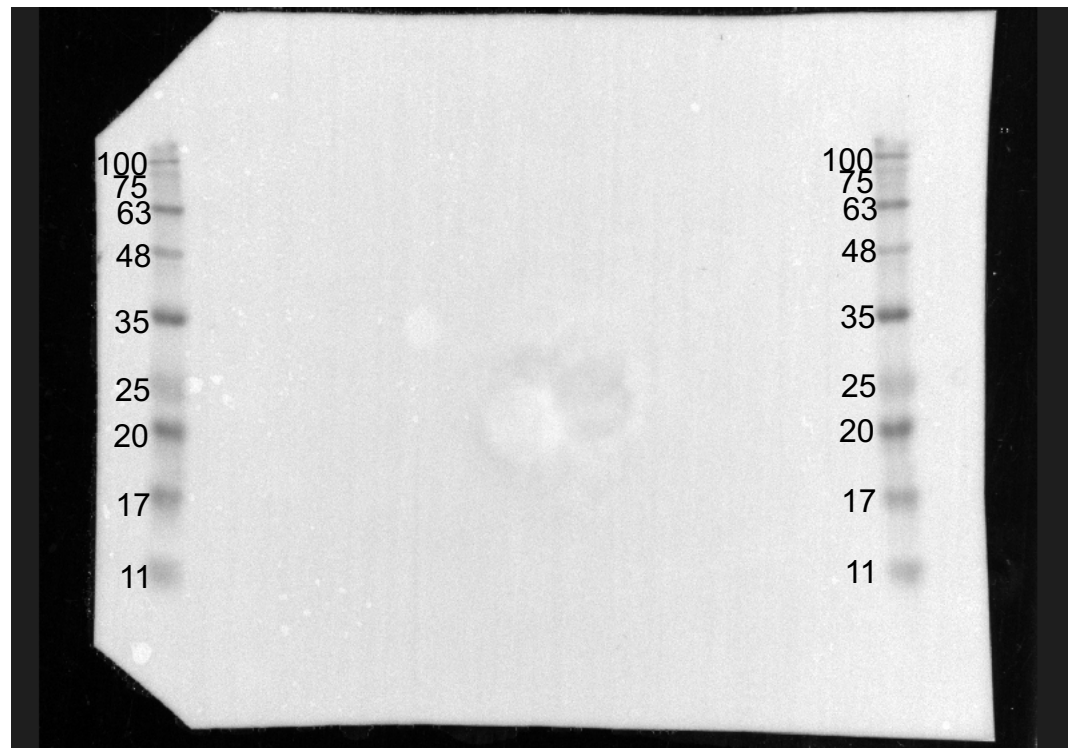
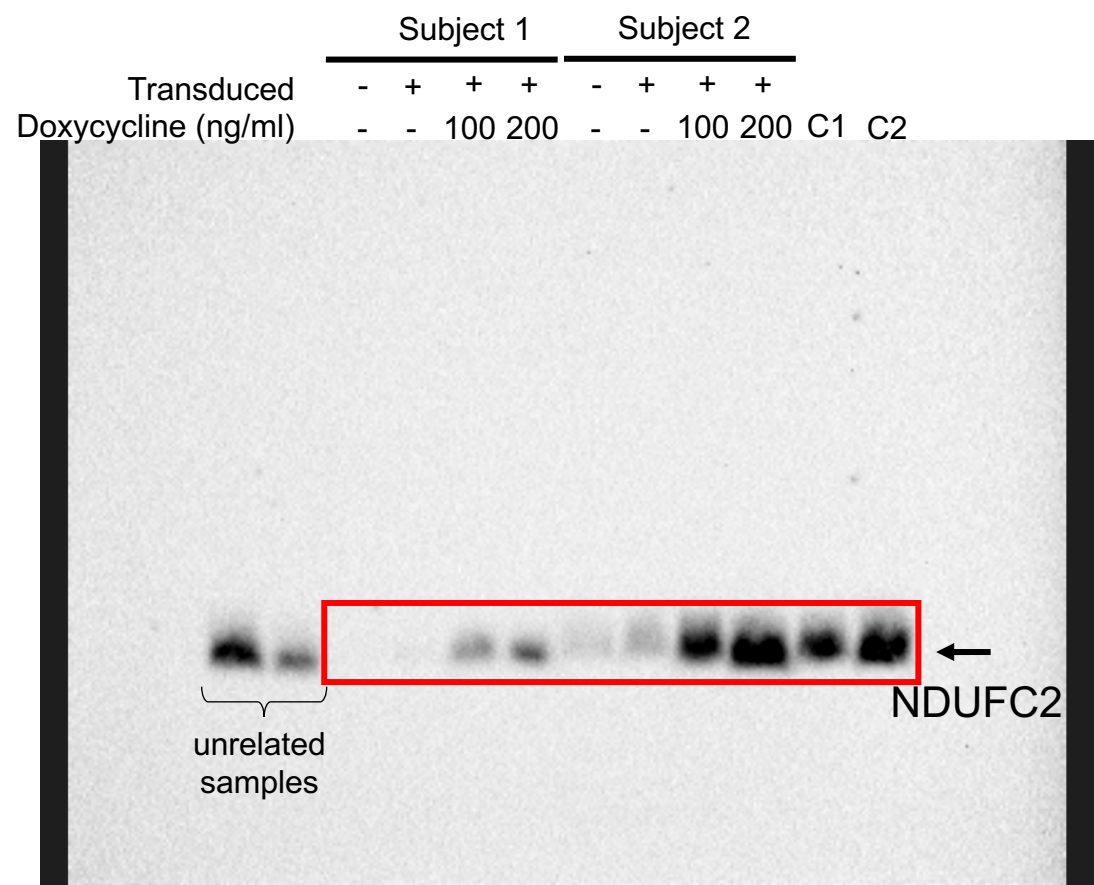


# Figure 3C

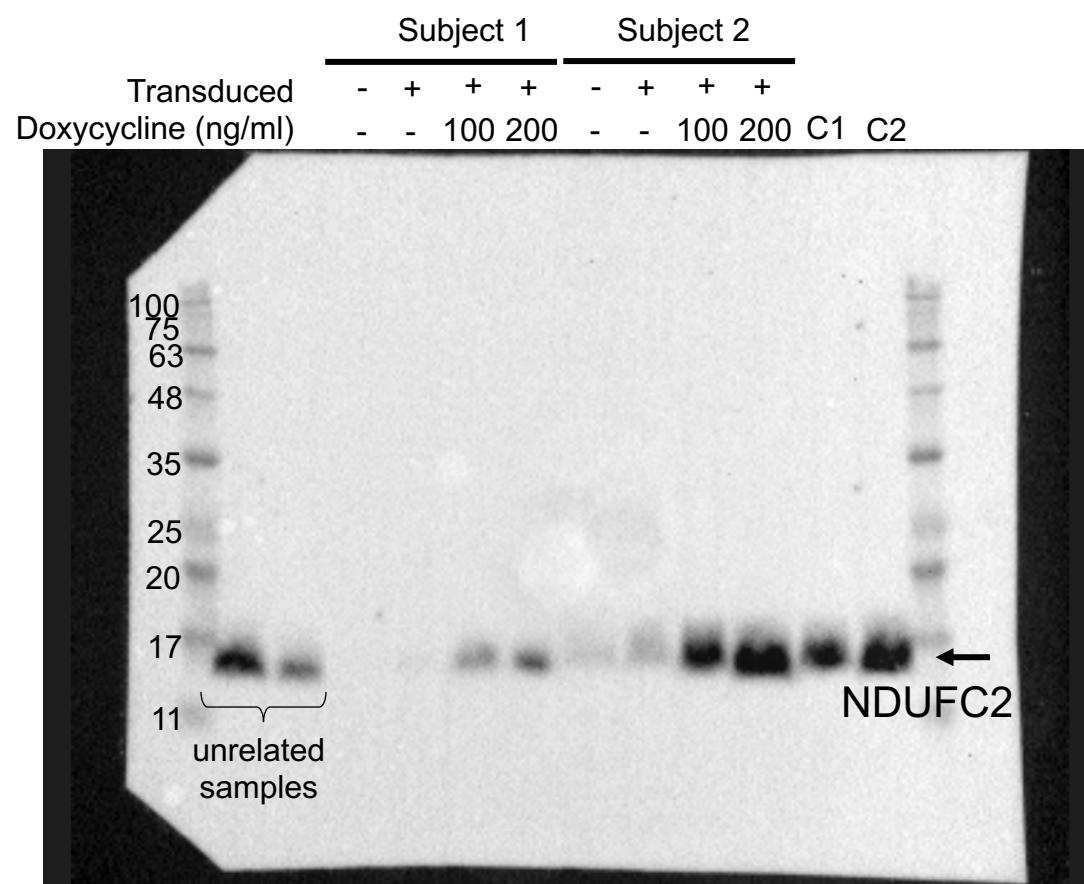
## NDUFC2 panel

Chemiluminescent signal used in figure

Colourimetric image to show MW marker (kDa)



Merged image



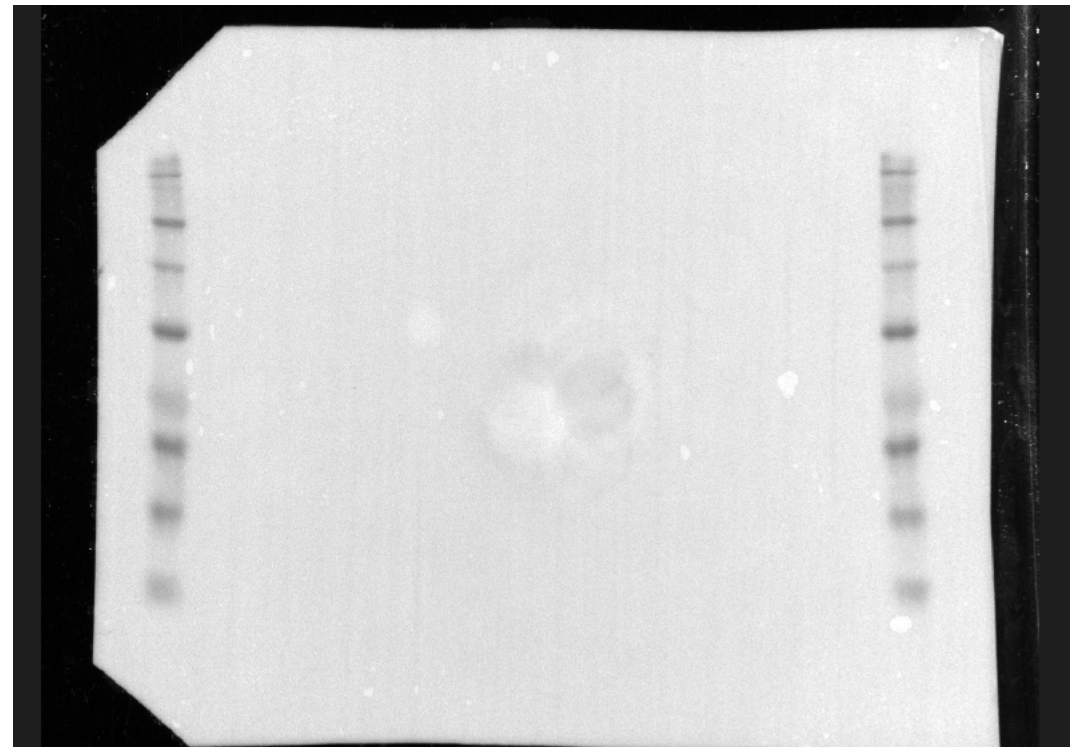
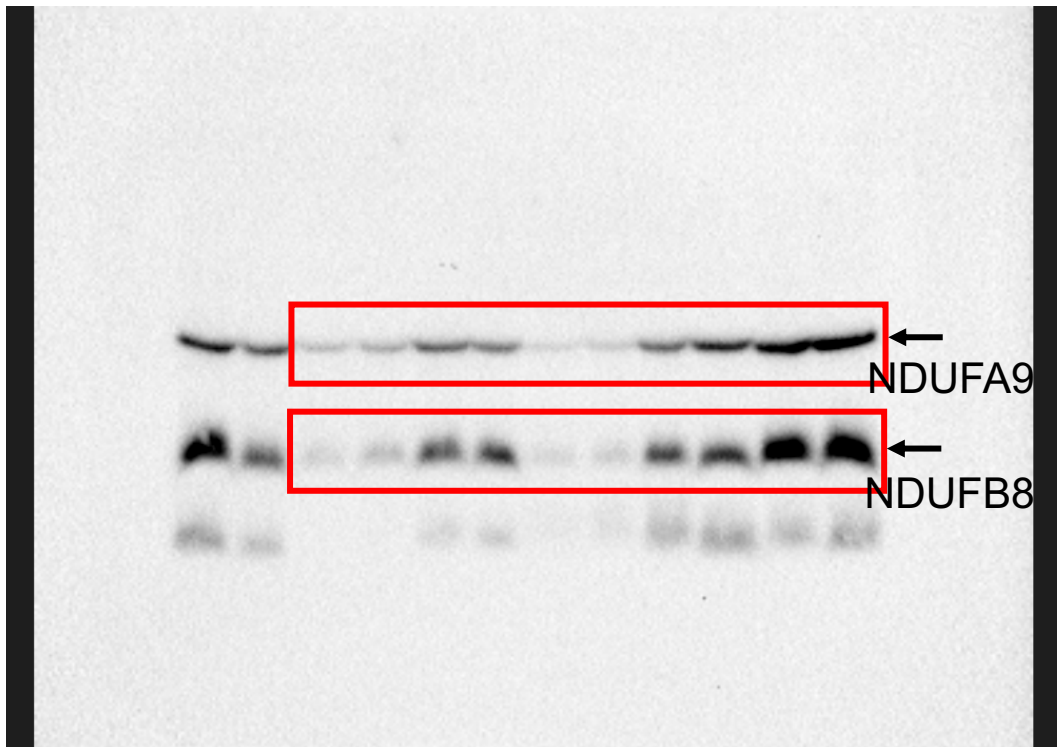
# Figure 3C continued

## NDUFB8 and NDUFA9 panels

Chemiluminescent signal used in figure

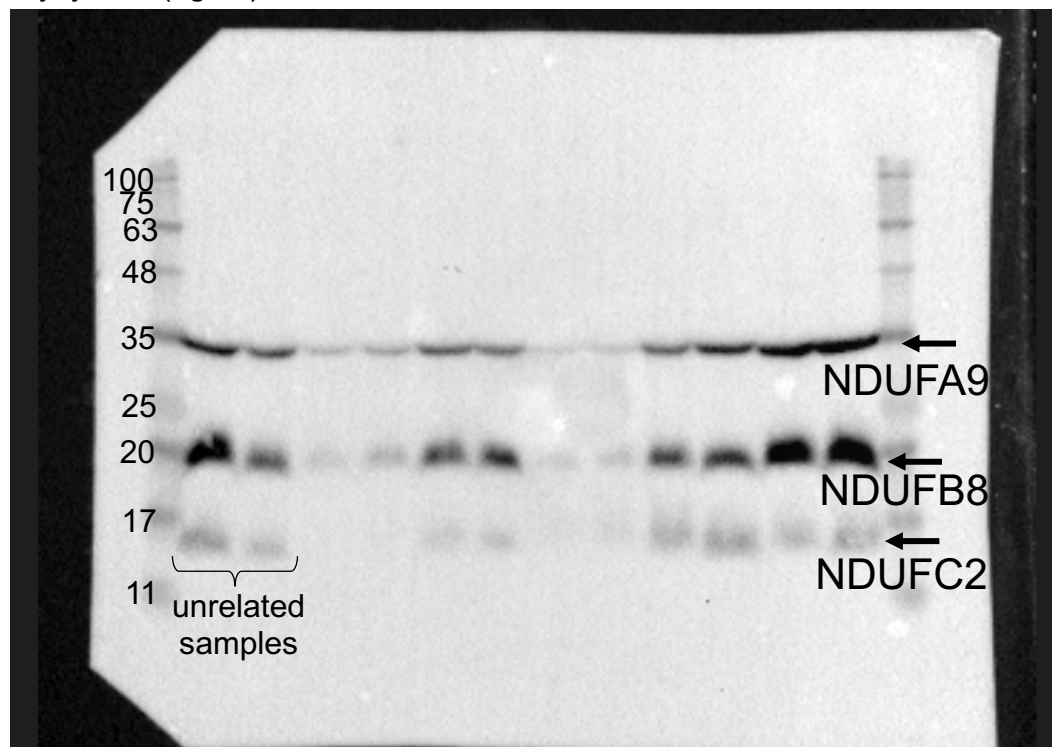
Colourimetric image to show MW marker (kDa)

	Subject 1				Subject 2					
Transduced	-	+	+	+	-	+	+	+	C1	C2
Doxycycline (ng/ml)	-	-	100	200	-	-	100	200		



Merged image

	Subject 1				Subject 2					
Transduced	-	+	+	+	-	+	+	+	C1	C2
Doxycycline (ng/ml)	-	-	100	200	-	-	100	200		





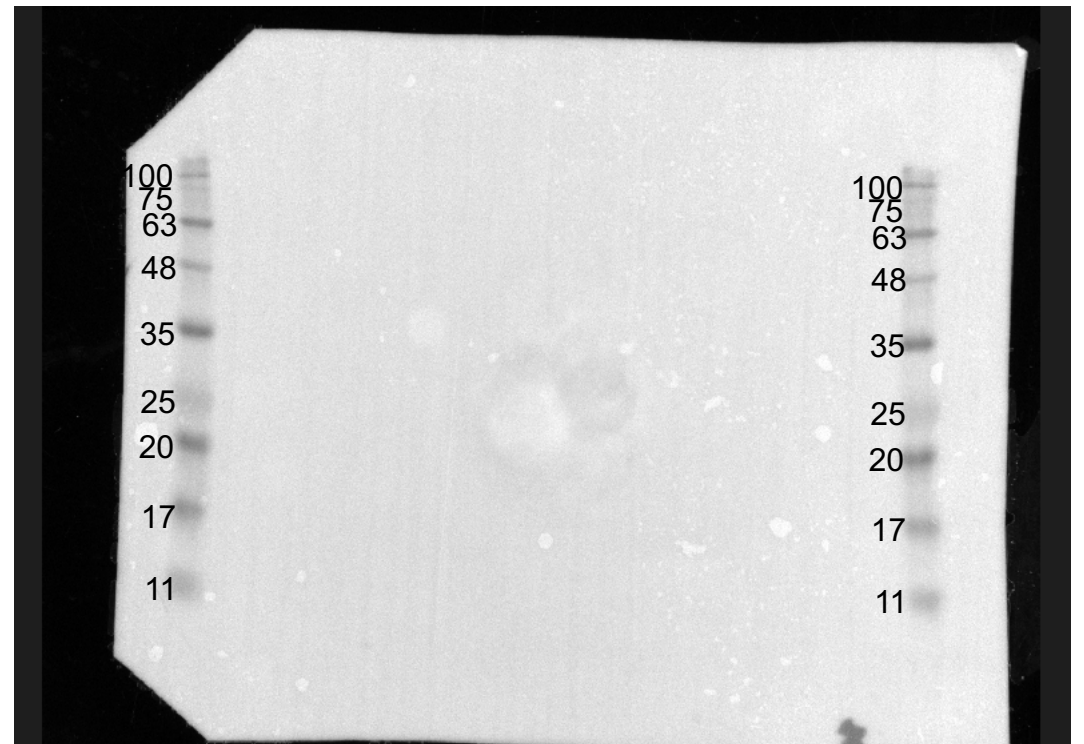
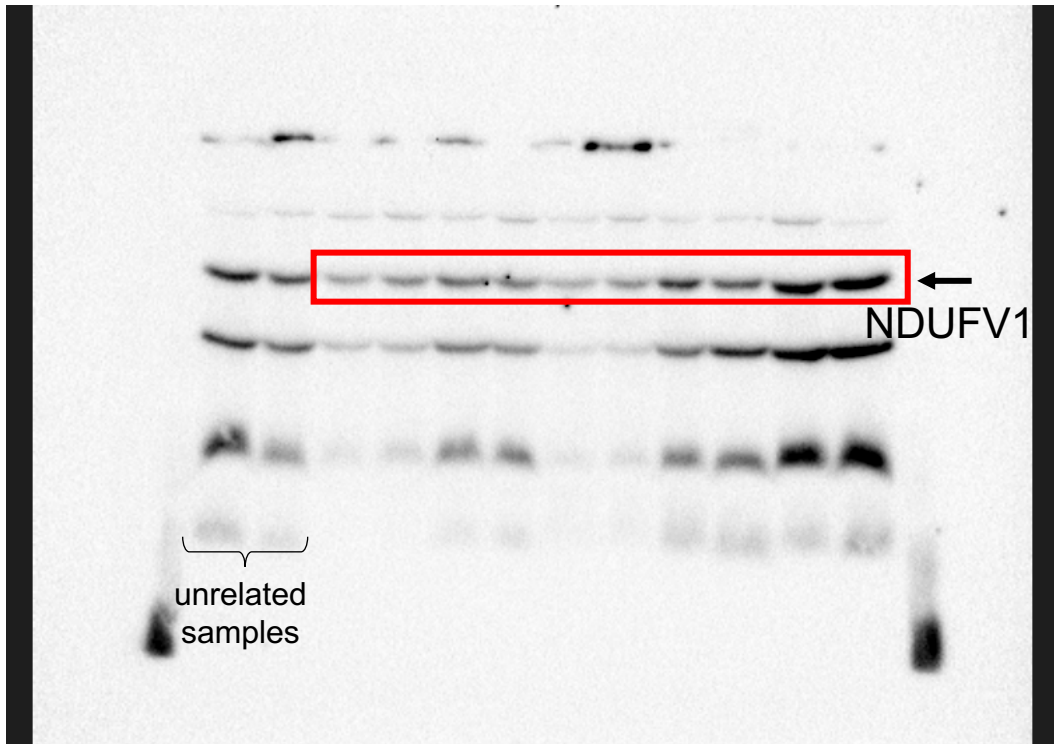
# Figure 3C continued

## NDUFV1 panel

Chemiluminescent signal used in figure

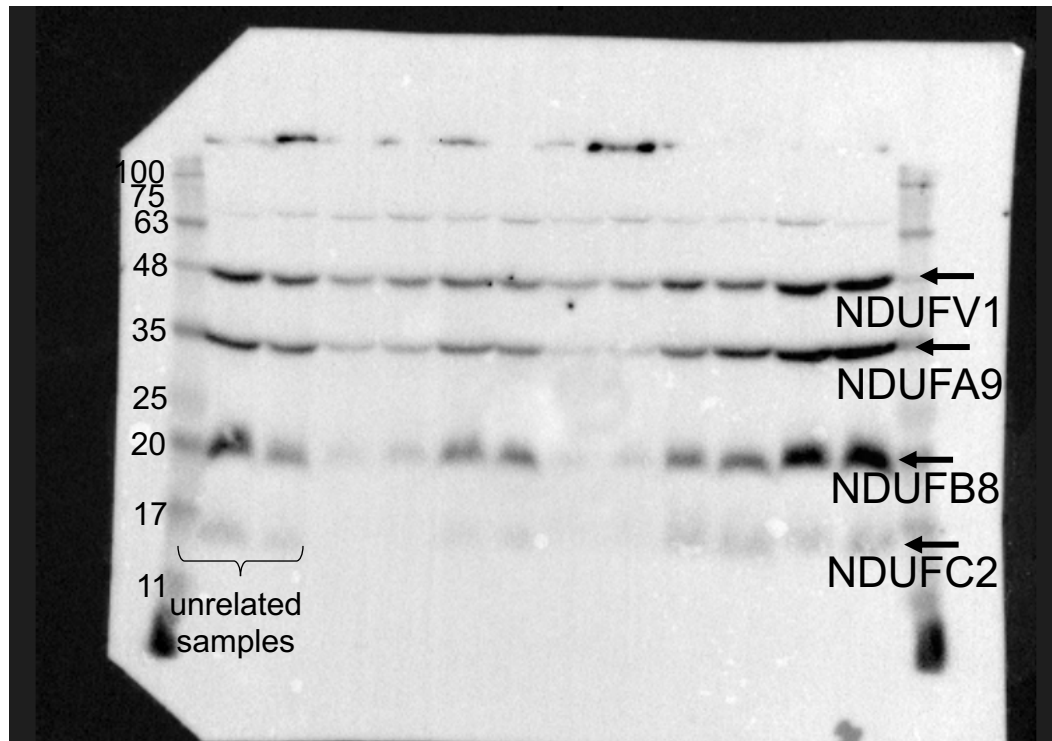
Colourimetric image to show MW marker (kDa)

	Subject 1				Subject 2					
Transduced	-	+	+	+	-	+	+	+	C1	C2
Doxycycline (ng/ml)	-	-	100	200	-	-	100	200		



Merged image

	Subject 1				Subject 2					
Transduced	-	+	+	+	-	+	+	+	C1	C2
Doxycycline (ng/ml)	-	-	100	200	-	-	100	200		



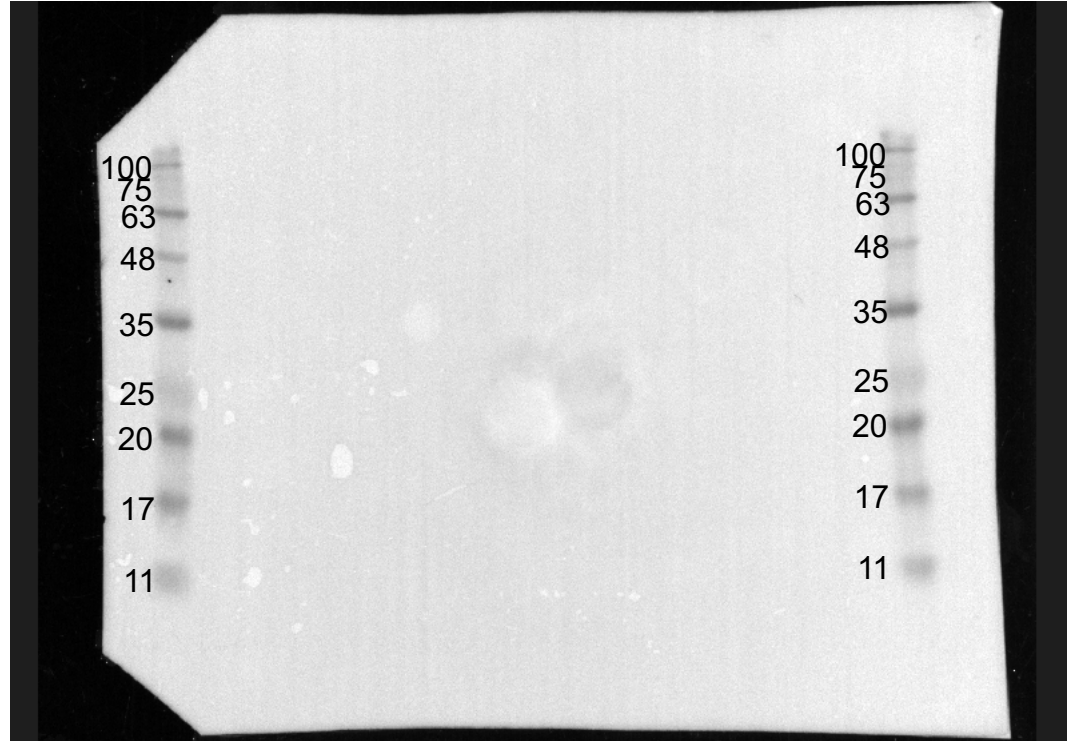
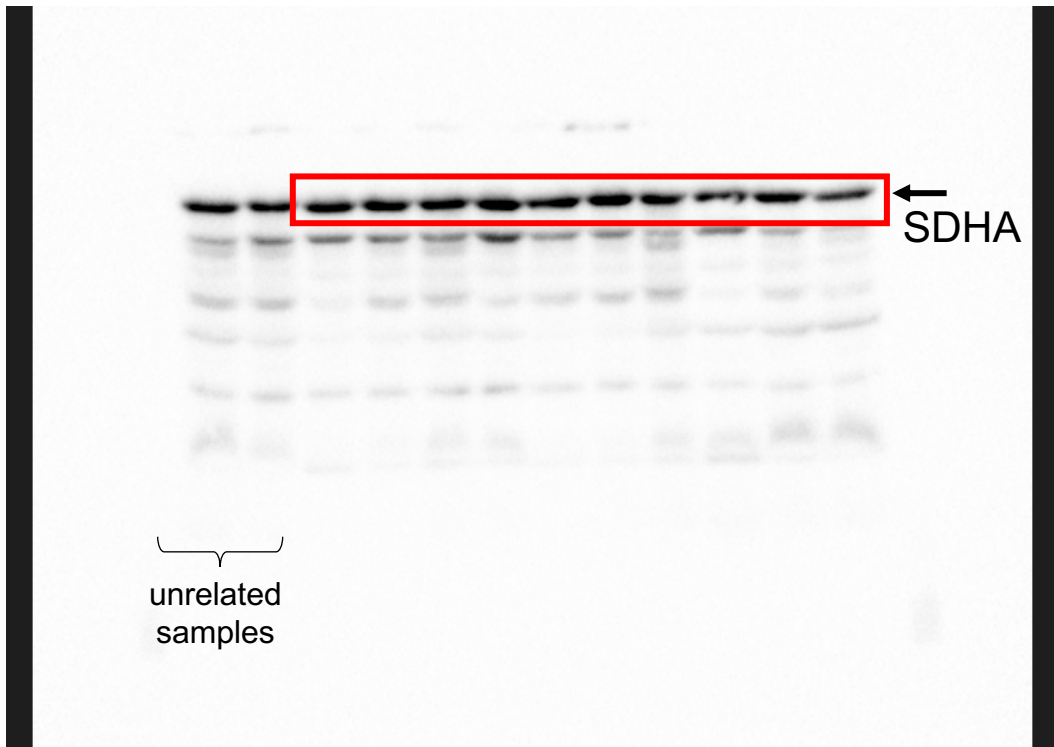
# Figure 3C

## SDHA panel

Chemiluminescent signal used in figure

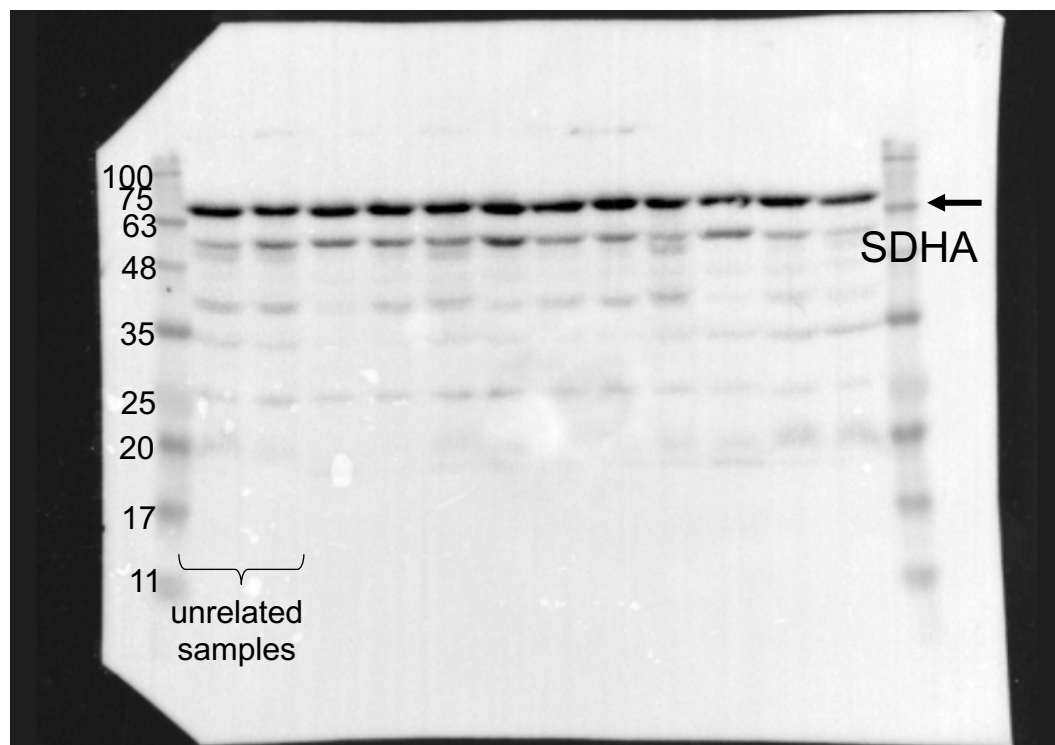
Colourimetric image to show MW marker (kDa)

	Subject 1				Subject 2					
Transduced	-	+	+	+	-	+	+	+	C1	C2
Doxycycline (ng/ml)	-	-	100	200	-	-	100	200		



Merged image

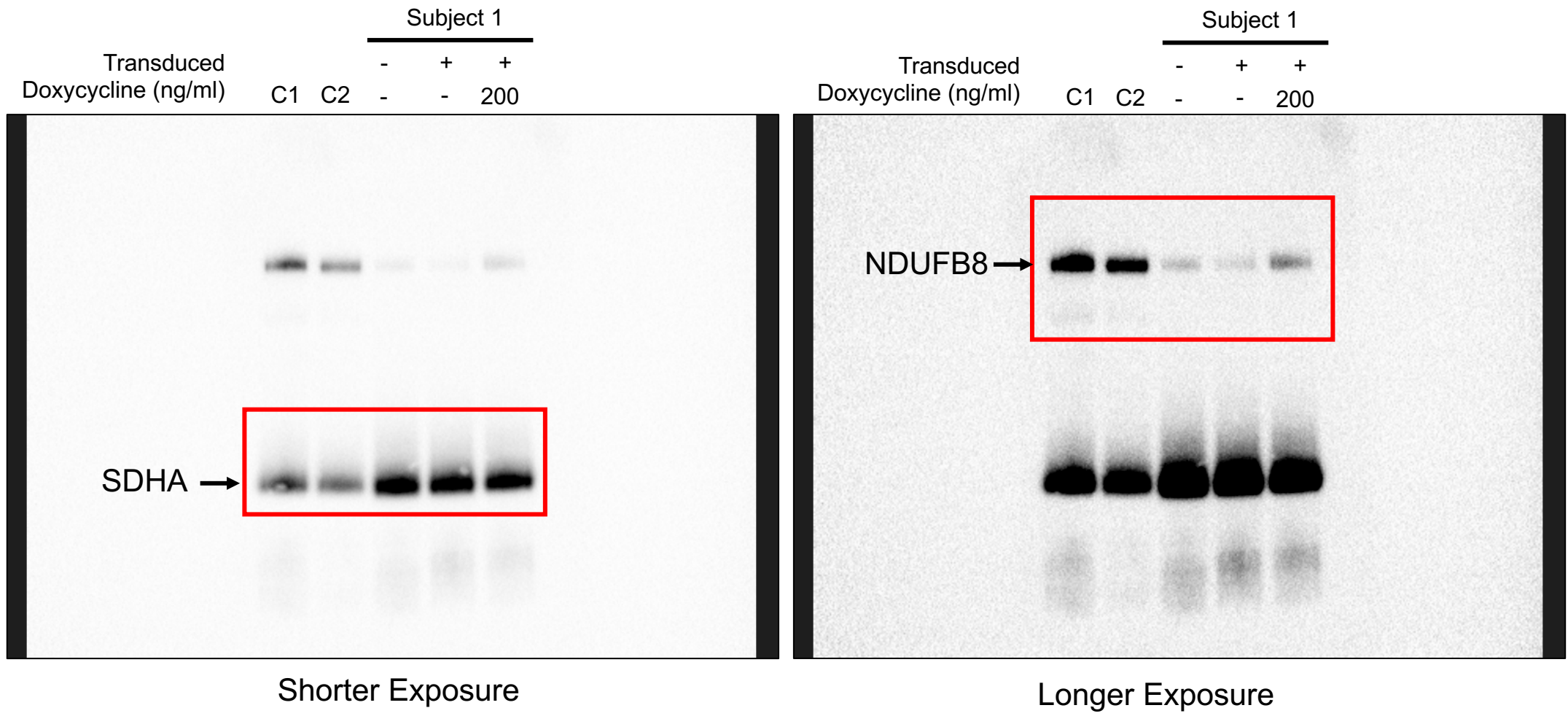
	Subject 1				Subject 2					
Transduced	-	+	+	+	-	+	+	+	C1	C2
Doxycycline (ng/ml)	-	-	100	200	-	-	100	200		





# Figure 3D

## Subject 1 panel



## Subject 2 panel

