

Supporting Information

Gold Nanorod assisted enhanced plasmonic detection scheme of COVID-19 SARS-CoV-2 spike protein.

Chandreyee Manas Das, Yan Guo, Yang Guang, Lixing Kang, Gaixia Xu, Ho-Pui Ho and Ken-Tye Yong*

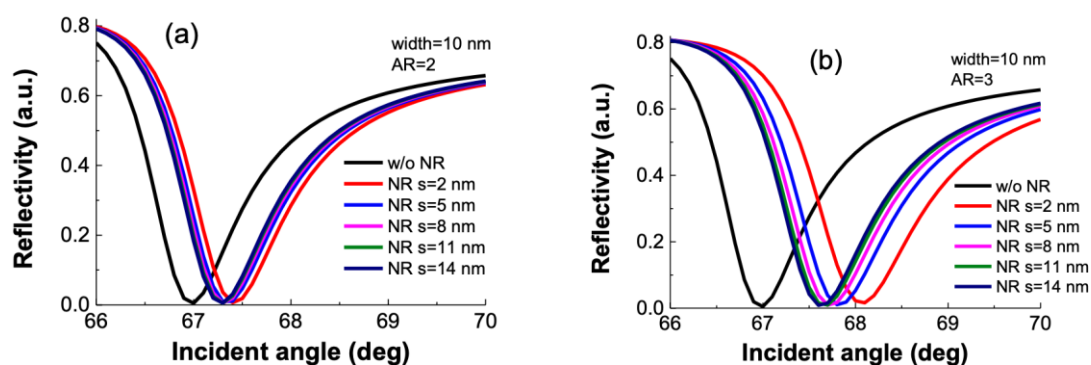
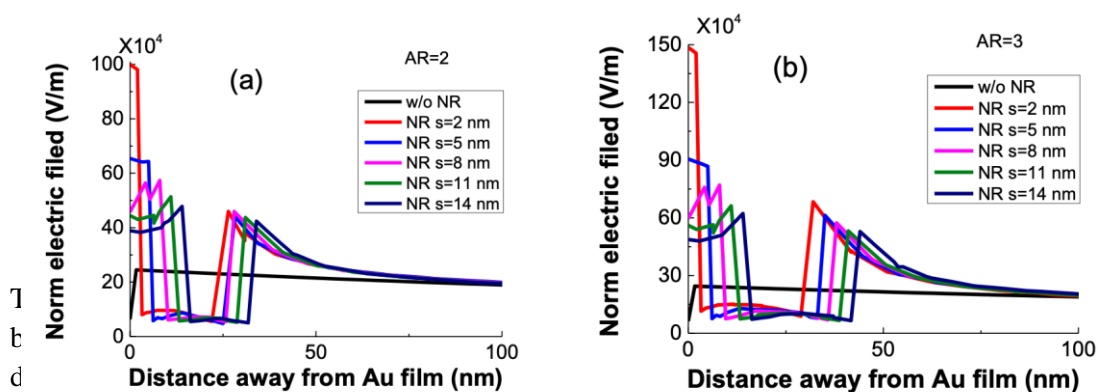
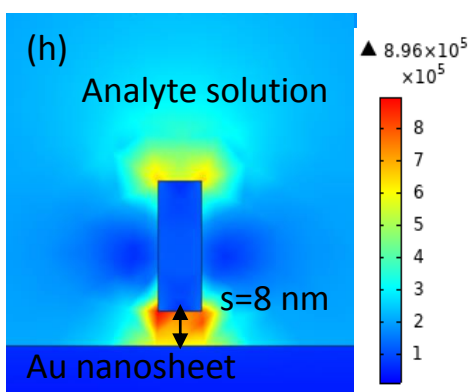


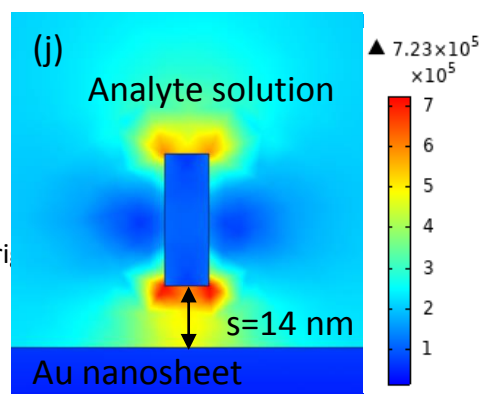
Figure S1. SPR reflectivity curves for Au nanosheet and Au NR system with varied spacing between NR and Au film when the aspect ratio equals to (a) 2 and (b) 3.



[10.1002/advs.202000162](https://doi.org/10.1002/advs.202000162)



by copyri



Author Manuscript

Figure S3. Normal electric field distributions under the resonance condition for Au NR with different aspect ratios and located at various distances from the Au nanosheet for AR=2 (a-e) and AR=3 (f-j).