

1 **Supplementary materials**

2 **Figure S1:** Random sampling validation. (A) Based on this risk model, 218 patients
3 with KIRC randomly sampled from TCGA database were divided into high- and
4 low-risk groups, and the corresponding survival curves were drawn. (B) Five-year
5 ROC curve. (C) Seven-year ROC curve. (D) Heatmap. The previous correlation
6 analysis with clinicopathological characteristics based on the risk model. (E)
7 Univariate Cox analysis. (F) Multivariate Cox analysis. *P < 0.05 and ***P < 0.001.
8

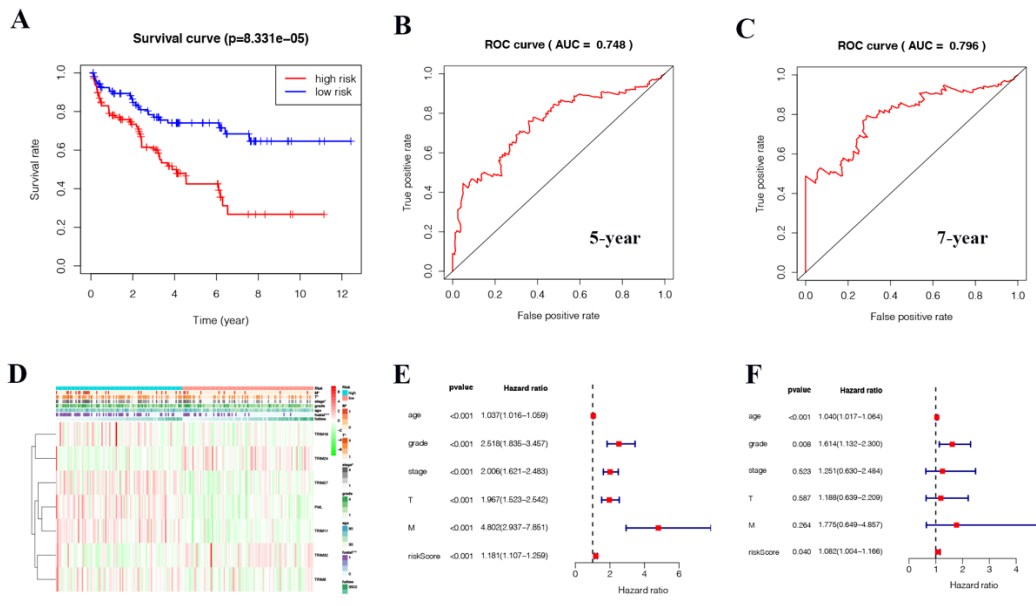


Figure S1