

Additional file 2

Figure S2

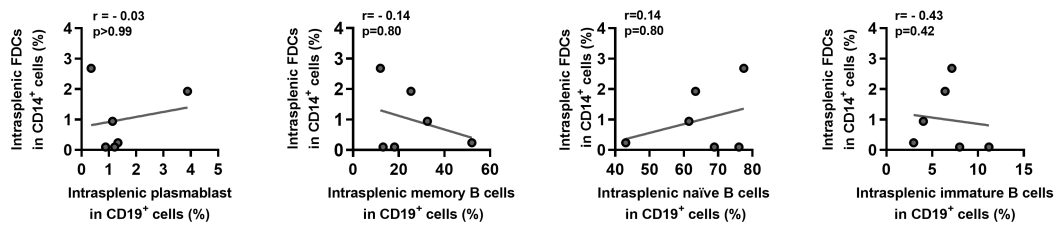


Figure S2. Correlations between the frequencies of intrasplenic follicular dendritic cells (FDCs) and B cell subsets in patients who underwent splenectomy due to HBV-related liver cirrhosis-induced hypersplenism. Splenic tissues were obtained from patients who underwent splenectomy due to HBV-related liver cirrhosis-induced hypersplenism (n = 6) and intrasplenic mononuclear cells were isolated, the correlations between the frequencies of intrasplenic follicular dendritic cells (FDCs) and plasmablast (CD19⁺CD38⁺CD27⁺), memory B cells (CD19⁺CD27⁺CD38⁻), naïve B cells (CD19⁺CD10⁻CD27⁻), and immature B cells (CD19⁺CD10⁺CD27⁻) were analyzed. Spearman rank correlation test.