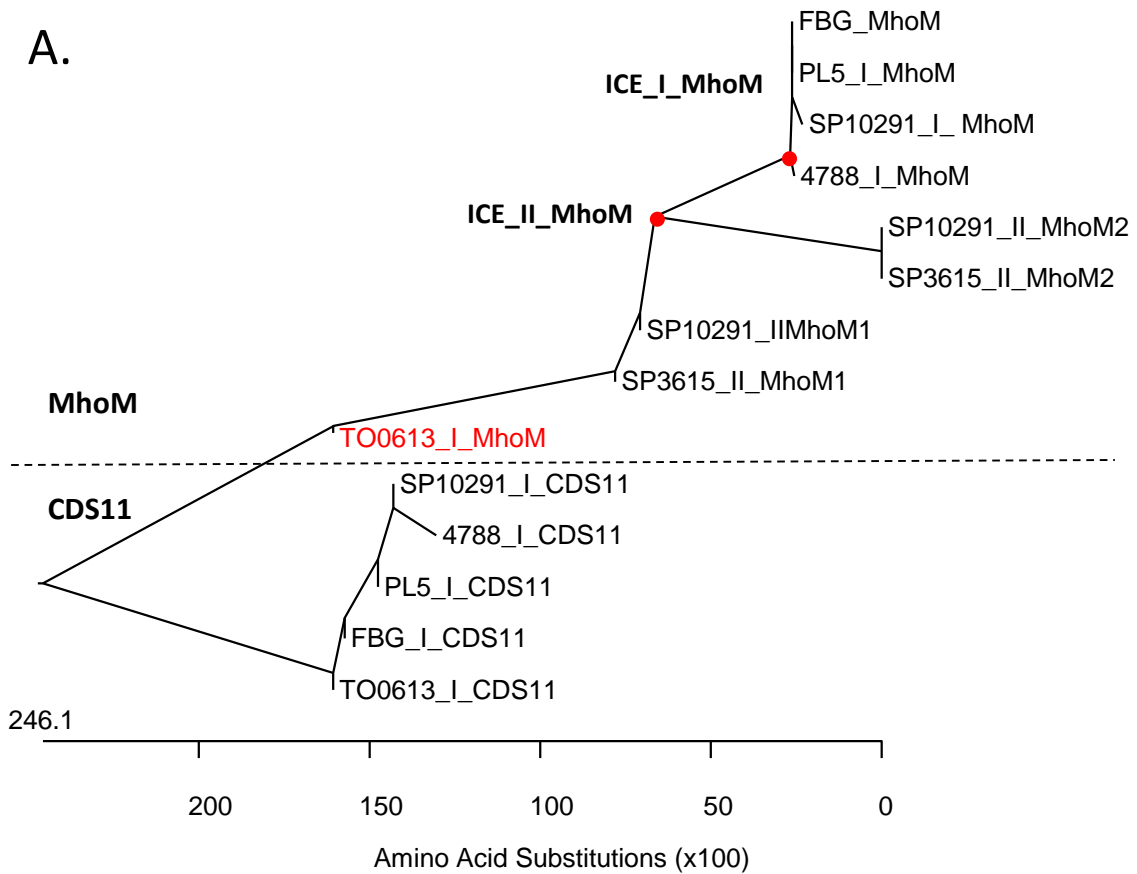


A.



B.

Percent Identity

	1	2	3	4	5	6	7	8	9	10	11	12	13	14		
1	█	18.8	97.0	18.0	53.4	30.1	53.4	30.1	31.6	19.5	100.0	18.0	98.5	16.5	1	FBG_I_MhoM
2	260.0	█	9.5	92.1	11.1	6.3	11.5	6.3	22.2	95.6	9.9	98.8	9.9	92.5	2	FBG_I_CDSF11
3	3.1	271.0	█	17.3	52.6	29.3	52.6	29.3	32.3	18.8	97.0	17.3	95.5	15.8	3	SP10291_I_MhoM
4	271.0	8.4	282.0	█	10.7	6.0	11.1	6.0	21.8	90.5	9.5	92.5	9.5	92.1	4	SP10291_I_CDS11
5	41.2	188.0	42.8	196.2	█	48.1	97.2	48.1	60.2	25.0	65.7	25.0	64.8	22.2	5	SP10291_II_MhoM1
6	106.9	296.0	110.7	315.0	70.7	█	51.5	100.0	50.5	15.5	41.2	15.5	41.2	15.5	6	SP10291_II_MhoM2
7	41.2	180.3	42.8	188.0	2.8	75.8	█	46.3	58.3	25.0	65.7	25.9	64.8	23.1	7	SP3615_II_MhoM1
8	106.9	296.0	110.7	315.0	70.7	0.0	75.8	█	50.5	15.5	41.2	15.5	41.2	15.5	8	SP3615_II_AMhoM2
9	104.2	104.9	100.8	107.6	51.6	74.4	55.4	74.4	█	43.7	31.1	43.7	31.1	39.3	9	TO0613_I_MhoM
10	250.0	4.5	260.0	10.2	196.2	315.0	196.2	315.0	97.4	█	10.3	96.0	10.3	90.5	10	TO0613_I_CDS11
11	0.0	260.0	3.1	271.0	41.2	106.9	41.2	106.9	104.2	250.0	█	18.0	98.5	16.5	11	PL5_I_MhoM
12	271.0	1.2	282.0	8.0	196.2	315.0	188.0	315.0	97.4	4.1	271.0	█	9.5	92.9	12	PL5_I_CDS11
13	1.5	260.0	4.7	271.0	42.8	106.9	42.8	106.9	104.2	250.0	1.5	271.0	█	16.5	13	4788_I_MhoM
14	296.0	8.0	309.0	8.4	218.0	315.0	209.0	315.0	113.2	10.2	296.0	7.5	296.0	█	14	4788_I_CDS11
	1	2	3	4	5	6	7	8	9	10	11	12	13	14		