

SUPPLEMENTARY INFORMATION

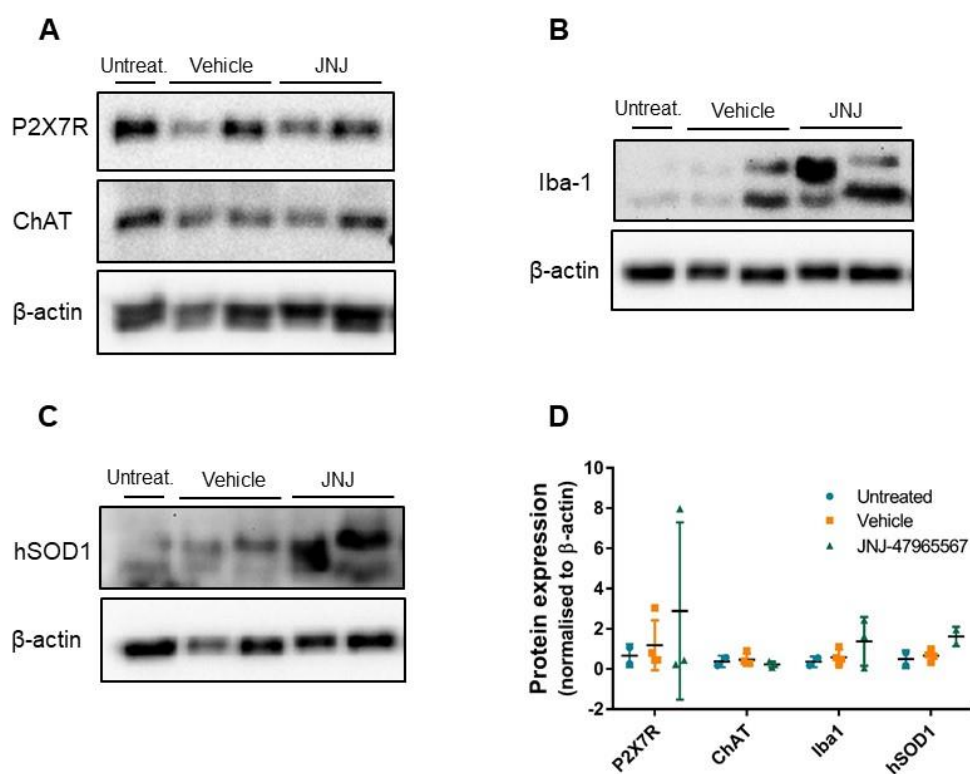


Fig S1. Protein expression analysis of spinal cord homogenates extracted from end-point females using Western Blot. Antibodies against P2X7R; choline acetyltransferase (ChAT), marker of motor neuron viability (**A**); Iba-1, marker of microglia (**B**); and mutated human SOD1 (**C**) were used. Results are presented in panel **D** as mean \pm SD. Data were analyzed with one-way ANOVA followed by Tukey's multiple comparisons test. Differences were considered as statistically significant when $p < 0.05$.