

Supplementary materials

Supplementary Table 1. Sensitivity analysis of DFS using alternative censoring methods (ITT population).

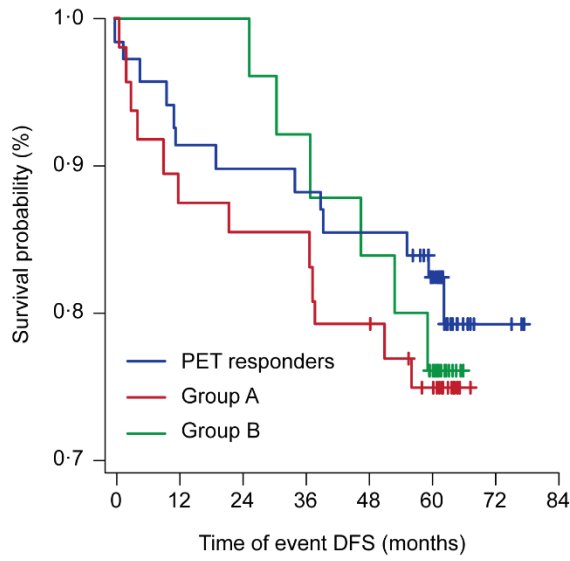
	PET responders	Group A	Group B
	(N=69)	(N=48)	(N=25)
DFS			
Number of events, n (%)	13 (18.8%)	12 (25.0%)	6 (24.0%)
Number of censored observations, n (%)	56 (81.2%)	36 (75.0%)	19 (76.0%)
Median DFS, months (95% CI)	NE (NE, NE)	NE (NE, NE)	NE (NE, NE)
5-year DFS rate, % (95% CI)*	82.4 (71.1, 89.6)	74.8 (59.9, 84.9)	76.0 (54.2, 88.4)

In this sensitivity analysis of DFS, patients who discontinued the study early for any reason were considered to be treatment failures.

** Derived from Kaplan-Meier estimates. NE, not evaluable.*

Supplementary Figure 1. Kaplan-Meier curves for DFS events using alternative censoring methods.

Y axis of the figure has been expanded.



Number at risk

	0	12	24	36	48	60	72	84
PET responders	69	63	62	61	59	48	3	0
Group A	48	42	41	41	38	31	0	0
Group B	25	25	25	23	21	17	0	0

In this sensitivity analysis of DFS, patients who discontinued the study early for any reason were considered to be treatment failures.